

Converting Colors

Hex(F8436F)

Have a look what the booklet for
Hex(F8436F) contains.

Hex(F8436F)	3
<i>Conversions</i>	4
<i>Details</i>	6
<i>Harmonies</i>	11
<i>Previews</i>	23
<i>Color Blindness Simulation</i>	26
<i>CSS Examples</i>	29

Color

Hex(F8436F)

Conversions

Conversions Part 1

Format	Color
Hex	F8436F
RGB	248, 67, 111
RGB Percent	97%, 26%, 44%
CMY	0.0275, 0.7373, 0.5647
CMYK	0.00, 0.73, 0.55, 0.03
HSL	345°, 93%, 62%
HSV	345°, 73%, 97%
XYZ	43.5878, 25.1185, 17.5899
YIQ	126.1350, 93.7520, 52.0560

Conversions

Conversions Part 2

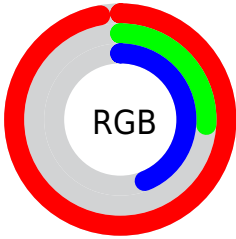
Format	Color
R_{YB}	248, 67, 111
Decimal	16270191
CIE Lab	57.19, 70.10, 17.26
CIE LCh	57, 72.196, 13.836
Yxy	25.1185, 0.5051, 0.2911
Android (android.graphics.Color)	4294460271 (0xFFFF8436F)
YUV	126.1350, -7.4616, 106.8756
Hunter-Lab	50.1183, 67.5340, 14.2739

Details

The Hex color **F8436F** is a dark color, and the websafe version is hex **FF3366**. The color can be described as middle washed rose. A complement of this color would be **43F8CC**, and the grayscale version is **7E7E7E**.

A 20% lighter version of the original color is **FF80A2**, and **B90040** is the 20% darker color. If you saturate the color by 10%, you get **F82A5C**, and if you desaturate by 10%, it is **F85C82**.

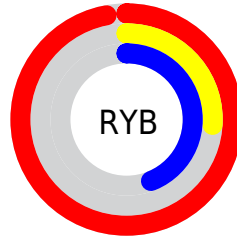
Distribution



Red (97%)

Green (26%)

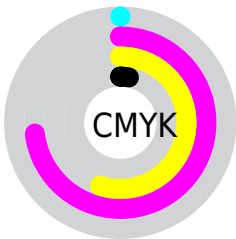
Blue (44%)



Red (97%)

Yellow (26%)

Blue (44%)

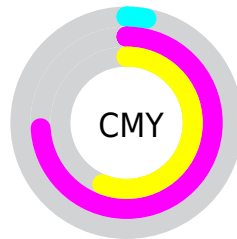


Cyan (0%)

Magenta (73%)

Yellow (55%)

Black (3%)



Cyan (3%)

Magenta (74%)

Yellow (56%)

Brightness & Saturation Gradients

These gradients show how the Hex color F8436F changes by changing the brightness by 10 percent. The first figure shows a shift by +10% for each color and the second figure -10%.

Similar to the brightness gradients but the following saturation gradients show a change of the Hex color F8436F by changing the saturation by 10% instead.

 F8436F

 F8436F

FFFFFF

 D81C57

 FF80A2

 B90040

 FF9DBD

 9A002A

 FFBBD9

 7B0017

 FFD8F5

 5D0002

 FFF6FF

 3F0003

 1C0001

 000000

 F8436F

 F8436F

 F82A5C

 F85C82

 F81149

 F87595

 F8003C

 F88DA7

 F8A6BA

 F8BFCD

 F8D8E0

 F8F1F2

 F8FFFF

Harmonies

Analogous

The Analogous color harmony consists of three colors that are next to each other on the color wheel.



E84AAE



F8436F



E85C33

Triad

The Triadic color harmony groups three colors that are evenly spaced from another and form a triangle on the color wheel.



F8436F



3D9D21



009AFF

Complementary

The Complementary color scheme is a pair of colors which are on the opposite of each other on the color wheel.



F8436F



43F8CC

Split Complementary

Split-complementary colors differ from the complementary color scheme. The scheme consists of three colors, the original color and two neighbors of the complement color.



00A3E0



F8436F



00A364

Square

The Square scheme is like the rectangle color scheme, but the four colors are evenly spaced on the color wheel.



F8436F



8A9000



00A6A6



1787FF

Rectangle

The Rectangle color scheme consists of four colors that form a rectangle on the color wheel.



F8436F



D07100



00A6A6



009EFB

Sweetspot

The Sweet Spot groups the original color and five complimentary colors.



F8436F



FFC7D5



CB43F8



805E66



000000



808080

Same Dimension

The Same Dimension uses a secret algorithm to generate beautiful new colors.



F8436F



FF1F55



F87043



7D7073



BD002E



3D000F

Inverse Universe

The Inverse Universe completely reimagines the original color for something new.



F8436F



FF1F55



43CBF8



7D7073



BD002E



3D000F

Previews

White Background



This preview shows how the Hex color F8436F looks on a white background.

Color Contrast Check

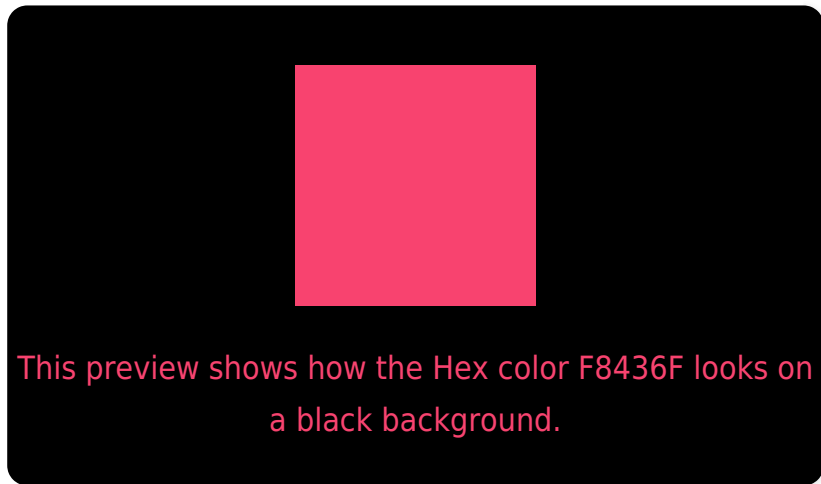
Large Text (above 18pt) WCAG AA ✓ Pass

Any Text WCAG AA × Fail

Large Text (above 18pt) WCAG AAA × Fail

Any Text WCAG AAA × Fail

Black Background



Color Contrast Check

Large Text (above 18pt) WCAG AA ✓ Pass

Any Text WCAG AA ✓ Pass

Large Text (above 18pt) WCAG AAA ✓ Pass

Any Text WCAG AAA × Fail

If you want to check with other color combinations, try the [Color Contrast Checker](#).

Hex F8436F Background



This preview shows how black text looks on a background with the Hex color F8436F.



This preview shows how white text looks on a background with the Hex color F8436F.

Color Blindness Simulation

Color vision deficiency is a very complex topic, and I could not describe the different causes any better than Wikipedia does, so if you want to learn more, you should check out their [article about color blindness](#).

Dichromacy



Original Color
F8436F

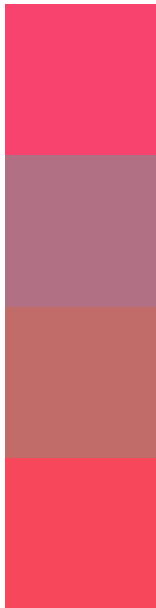
Protanopia
8A8992

Deuteranopia
A28466



Tritanopia
F64A4E

Trichromacy



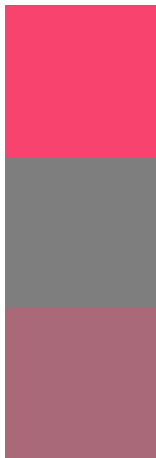
Original Color
F8436F

Protanomaly
B27085

Deuteranomaly
C16C69

Tritanomaly
F7475A

Monochromacy



Original Color
F8436F

Achromatopsia
7E7E7E

Achromatomaly
AA6979

CSS Examples

Text

The CSS property to change the color of the text to Hex F8436F is called "color". The color property can be set on classes, ids or directly on the HTML element.

This example shows how text in the color #F8436F looks like.

```
.text, #text, p{  
    color:#F8436F  
}
```

If you want to add a text shadow in that color use the text-shadow property, you can generate a text shadow directly with our [CSS Text Shadow Generator](#).

Here you see how black text with a 4 pixel #F8436F colored shadow looks like.

```
.shadow{ text-shadow: 4px 4px 2px #F8436F
}
```

Border

The CSS property to change the border of an element to Hex F8436F is called "border". The border property can be set on classes, ids or directly on the HTML element.

This example shows the color as border, it can be applied via the CSS property "border" or "border-color".

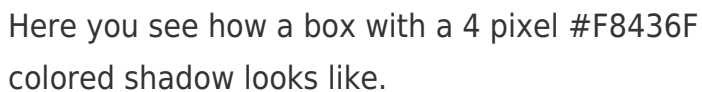
```
.border, #border, table{ border:4px solid
#F8436F }
```

If only the border color should be changed use the property `border-color`.

```
.border{ border-color:#F8436F }
```

If you want to add a box shadow in that color use:

Here you see how a box with a 4 pixel #F8436F colored shadow looks like.



```
.boxshadow{ -moz-box-shadow:4px 4px 4px  
4px #F8436F; -webkit-box-shadow:4px 4px  
4px 4px #F8436F; box-shadow:4px 4px 4px  
4px #F8436F }
```

Background

The CSS property to change the background color of an element to Hex F8436F is called "background". The background property can be set on classes, ids or directly on the HTML element.

```
.background, #background, body{  
background:#F8436F }
```

If only the background color should be changed can be used:

```
.background{ background-color:#F8436F }
```

This example shows the color as background, it is applied via the CSS property "background".

To optimize and compress your CSS code, you can use our [online CSS compressor and optimizer](#) based on csstidy. If you want to create a linear or radial gradient as background or border, check our [CSS Gradient Generator](#).

Hey! You found this booklet interesting? Support Converting Colors with the new Membership Option!

The pro membership hides all ads, plus gives you double the colors in the color bucket, and more awesome pro features!

[Learn more, Memberships starting at \\$2.50/m!](#)

**Follow me
on Twitter!**

@ConvertingColor