

# Converting Colors

Hex(F85289)

Have a look what the booklet for  
Hex(F85289) contains.

|  |    |
|--|----|
| <b>Hex(F85289)</b> .....                       | 3  |
| <i><b>Conversions</b></i> .....                | 4  |
| <i><b>Details</b></i> .....                    | 6  |
| <i><b>Harmonies</b></i> .....                  | 11 |
| <i><b>Previews</b></i> .....                   | 23 |
| <i><b>Color Blindness Simulation</b></i> ..... | 26 |
| <i><b>CSS Examples</b></i> .....               | 29 |

# **Color**

**Hex(F85289)**

# Conversions

## Conversions Part 1

| Format      | Color                      |
|-------------|----------------------------|
| Hex         | F85289                     |
| RGB         | 248, 82, 137               |
| RGB Percent | 97%, 32%, 54%              |
| CMY         | 0.0275, 0.6784, 0.4627     |
| CMYK        | 0.00, 0.67, 0.45, 0.03     |
| HSL         | 340°, 92%, 65%             |
| HSV         | 340°, 67%, 97%             |
| XYZ         | 46.2440, 27.7972, 26.5950  |
| YIQ         | 137.9040, 81.2810, 52.2970 |

# Conversions

## Conversions Part 2

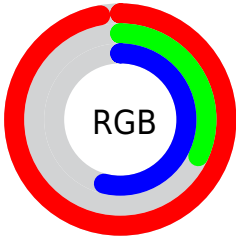
| <b>Format</b>                       | <b>Color</b>                                   |
|-------------------------------------|--|
| <a href="#">RYB</a>                 | <a href="#">248, 82, 137</a>                   |
| Decimal                             | <a href="#">16274057</a>                       |
| CIELab                              | <a href="#">59.71, 66.94, 5.51</a>             |
| CIELCh                              | <a href="#">60, 67.168, 4.703</a>              |
| Yxy                                 | <a href="#">27.7972, 0.4595,<br/>0.2762</a>    |
| Android<br>(android.graphics.Color) | <a href="#">4294464137<br/>(0xFFFF85289)</a>   |
| YUV                                 | <a href="#">137.9040, -0.4457,<br/>96.5542</a> |
| Hunter-Lab                          | <a href="#">52.7230, 64.2993,<br/>6.9986</a>   |

# Details

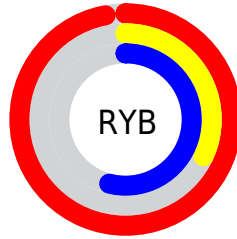
The Hex color **F85289** is a light color, and the websafe version is hex **FF6699**. The color can be described as light muted rose. A complement of this color would be **52F8C1**, and the grayscale version is **8A8A8A**.

A 20% lighter version of the original color is **FF8DBE**, and **BA0057** is the 20% darker color. If you saturate the color by 10%, you get **F83978**, and if you desaturate by 10%, it is **F86B9A**.

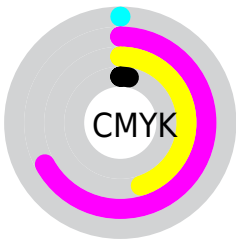
# Distribution



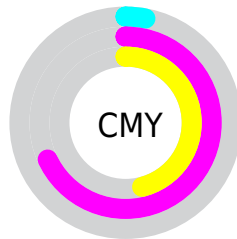
- Red (97%)
- Green (32%)
- Blue (54%)



- Red (97%)
- Yellow (32%)
- Blue (54%)



- Cyan (0%)
- Magenta (67%)
- Yellow (45%)
- Black (3%)



- Cyan (3%)
- Magenta (68%)
- Yellow (46%)

# Brightness & Saturation Gradients

These gradients show how the Hex color F85289 changes by changing the brightness by 10 percent. The first figure shows a shift by +10% for each color and the second figure -10%.

Similar to the brightness gradients but the following saturation gradients show a change of the Hex color F85289 by changing the saturation by 10% instead.



 F85289

 F85289

FFFFFF

 D93270

 FF8DBE

 BA0057

 FFA9DA

 9C0040

 FFC7F6

 7E002B

 FFE4FF

 600017

 450003

 240001

 000000

 F85289

 F85289

 F83978

 F86B9A

 F82068

 F884AA

 F80857

 F89CBB

 F80052

 F8B5CB

 F8CEDC

 F8E7EC

 F8FFFD

 F8FFFF

# Harmonies

## Analogous

The Analogous color harmony consists of three colors that are next to each other on the color wheel.



DE60C3



F85289



F26050

# Triad

The Triadic color harmony groups three colors that are evenly spaced from another and form a triangle on the color wheel.



F85289



669F21



00A3FB

# Complementary

The Complementary color scheme is a pair of colors which are on the opposite of each other on the color wheel.



F85289



52F8C1

# Split Complementary

Split-complementary colors differ from the complementary color scheme. The scheme consists of three colors, the original color and two neighbors of the complement color.



00AAD2



F85289



00A85A

# Square

The Square scheme is like the rectangle color scheme, but the four colors are evenly spaced on the color wheel.



F85289



A49000



00AB98



0094FF

# Rectangle

The Rectangle color scheme consists of four colors that form a rectangle on the color wheel.



F85289



E0712D



00AB98



00A6F0



# Sweetspot

The Sweet Spot groups the original color and five complimentary colors.



F85289



FFCCDD



C152F8



80616B



000000



808080



# Same Dimension

The Same Dimension uses a secret algorithm to generate beautiful new colors.



F85289



FF3377



F86E52



7D7075



BD003F



3D0014



# Inverse Universe

The Inverse Universe completely reimagines the original color for something new.



F85289



FF3377



52DCF8



7D7075



BD003F



3D0014



# Previews

## White Background



This preview shows how the Hex color F85289 looks on a white background.

## Color Contrast Check

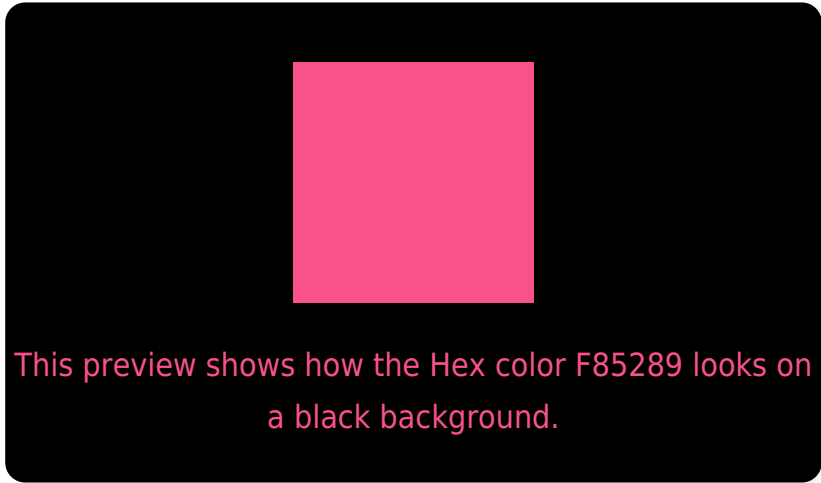
Large Text (above 18pt) WCAG AA ✓ Pass

Any Text WCAG AA ✗ Fail

Large Text (above 18pt) WCAG AAA ✗ Fail

Any Text WCAG AAA ✗ Fail

# Black Background



## Color Contrast Check

Large Text (above 18pt) WCAG AA ✓ Pass

Any Text WCAG AA ✓ Pass

Large Text (above 18pt) WCAG AAA ✓ Pass

Any Text WCAG AAA × Fail

If you want to check with other color combinations, try the [Color Contrast Checker](#).



## Hex F85289 Background



This preview shows how black text looks on a background with the Hex color F85289.



This preview shows how white text looks on a background with the Hex color F85289.

# Color Blindness Simulation

Color vision deficiency is a very complex topic, and I could not describe the different causes any better than Wikipedia does, so if you want to learn more, you should check out their [article about color blindness](#).

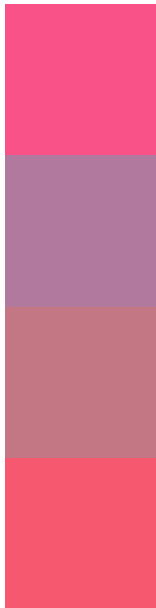
## Dichromacy





**Tritanopia**  
F55B60

# Trichromacy



**Original Color**  
F85289

**Protanomaly**  
B2799F

**Deuteranomaly**  
C37684

**Tritanomaly**  
F6586F

# Monochromacy



**Original Color**  
F85289

**Achromatopsia**  
8A8A8A

**Achromatomaly**  
B2768A

# CSS Examples

## Text

The CSS property to change the color of the text to Hex F85289 is called "color". The color property can be set on classes, ids or directly on the HTML element.

This example shows how text in the color #F85289 looks like.

```
.text, #text, p{  
    color:#F85289  
}
```

If you want to add a text shadow in that color use the text-shadow property, you can generate a text shadow directly with our [CSS Text Shadow Generator](#).

Here you see how black text with a 4 pixel #F85289 colored shadow looks like.

```
.shadow{ text-shadow: 4px 4px 2px #F85289
}
```

## Border

The CSS property to change the border of an element to Hex F85289 is called "border". The border property can be set on classes, ids or directly on the HTML element.

This example shows the color as border, it can be applied via the CSS property "border" or "border-color".

```
.border, #border, table{ border:4px solid
#F85289 }
```

If only the border color should be changed use the property `border-color`.

```
.border{ border-color:#F85289 }
```

If you want to add a box shadow in that color use:

Here you see how a box with a 4 pixel #F85289 colored shadow looks like.

```
.boxshadow{ -moz-box-shadow:4px 4px 4px  
4px #F85289; -webkit-box-shadow:4px 4px  
4px 4px #F85289; box-shadow:4px 4px 4px  
4px #F85289 }
```

# Background

The CSS property to change the background color of an element to Hex F85289 is called "background". The background property can be set on classes, ids or directly on the HTML element.

```
.background, #background, body{  
background:#F85289 }
```

If only the background color should be changed can be used:

```
.background{ background-color:#F85289 }
```

This example shows the color as background, it is applied via the CSS property "background".

To optimize and compress your CSS code, you can use our [online CSS compressor and optimizer](#) based on csstidy. If you want to create a linear or radial gradient as background or border, check our [CSS Gradient Generator](#).



Hey! You found this booklet interesting? Support Converting Colors with the new Membership Option!

The pro membership hides all ads, plus gives you double the colors in the color bucket, and more awesome pro features!

**[Learn more, Memberships starting at \\$2.50/m!](#)**

**Follow me  
on Twitter!**

@ConvertingColor