

Converting Colors

Hex(F8547C)

Have a look what the booklet for
Hex(F8547C) contains.

Hex(F8547C)	3
<i>Conversions</i>	4
<i>Details</i>	6
<i>Harmonies</i>	11
<i>Previews</i>	23
<i>Color Blindness Simulation</i>	26
<i>CSS Examples</i>	29

Color

Hex(F8547C)

Conversions

Conversions Part 1

Format	Color
Hex	F8547C
RGB	248, 84, 124
RGB Percent	97%, 33%, 49%
CMY	0.0275, 0.6706, 0.5137
CMYK	0.00, 0.66, 0.50, 0.03
HSL	345°, 92%, 65%
HSV	345°, 66%, 97%
XYZ	45.5198, 27.7523, 22.0264
YIQ	137.5960, 84.9040, 47.2080

Conversions

Conversions Part 2

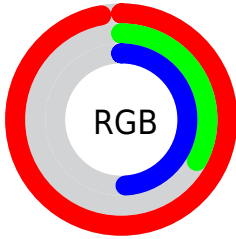
Format	Color
R_{YB}	248, 84, 124
Decimal	16274556
CIE _{Lab}	59.66, 65.05, 13.05
CIE _{LCh}	60, 66.349, 11.343
Yxy	27.7523, 0.4777, 0.2912
Android (android.graphics.Color)	4294464636 (0xFFFF8547C)
YUV	137.5960, -6.7028, 96.8243
Hunter-Lab	52.6805, 62.0462, 12.0865

Details

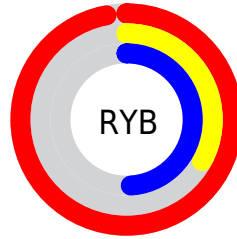
The Hex color **F8547C** is a light color, and the websafe version is hex **FF6699**. The color can be described as light muted rose. A complement of this color would be **54F8D0**, and the grayscale version is **8A8A8A**.

A 20% lighter version of the original color is **FF8EB0**, and **BA054C** is the 20% darker color. If you saturate the color by 10%, you get **F83B69**, and if you desaturate by 10%, it is **F86D8F**.

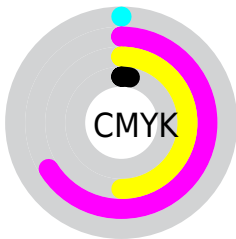
Distribution



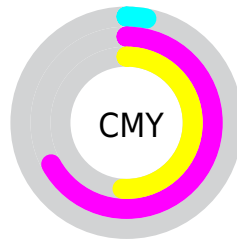
- Red (97%)
- Green (33%)
- Blue (49%)



- Red (97%)
- Yellow (33%)
- Blue (49%)



- Cyan (0%)
- Magenta (66%)
- Yellow (50%)
- Black (3%)



- Cyan (3%)
- Magenta (67%)
- Yellow (51%)

Brightness & Saturation Gradients

These gradients show how the Hex color F8547C changes by changing the brightness by 10 percent. The first figure shows a shift by +10% for each color and the second figure -10%.

Similar to the brightness gradients but the following saturation gradients show a change of the Hex color F8547C by changing the saturation by 10% instead.

 F8547C

 F8547C

FFFFFF

 D93563

 FF8EB0

 BA054C

 FFABCC

 9B0035

 FFC8E8

 7D0021

 FFE5FF

 5F0009

 440003

 220001

 000000

 F8547C

 F8547C

 F83B69

 F86D8F

 F82256

 F886A2

 F80A44

 F89EB4

 F8003C

 F8B7C7

 F8D0DA

 F8E9ED

 F8FFFF

Harmonies

Analogous

The Analogous color harmony consists of three colors that are next to each other on the color wheel.



E55CB6



F8547C



EC6645

Triad

The Triadic color harmony groups three colors that are evenly spaced from another and form a triangle on the color wheel.



F8547C



56A12F



00A0FE

Complementary

The Complementary color scheme is a pair of colors which are on the opposite of each other on the color wheel.



F8547C



54F8D0

Split Complementary

Split-complementary colors differ from the complementary color scheme. The scheme consists of three colors, the original color and two neighbors of the complement color.



00A9DC



F8547C



00A868

Square

The Square scheme is like the rectangle color scheme, but the four colors are evenly spaced on the color wheel.



F8547C



979400



00ABA5



2E8FFF

Rectangle

The Rectangle color scheme consists of four colors that form a rectangle on the color wheel.



F8547C



D77723



00ABA5



00A4F6

Sweetspot

The Sweet Spot groups the original color and five complimentary colors.



F8547C



FFCCD8



CF54F8



806168



000000



808080

Same Dimension

The Same Dimension uses a secret algorithm to generate beautiful new colors.



F8547C



FF3667



F87D54



7D7074



BD002E



3D000F

Inverse Universe

The Inverse Universe completely reimagines the original color for something new.



F8547C



FF3667



54CFF8



7D7074



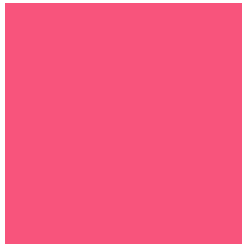
BD002E



3D000F

Previews

White Background



This preview shows how the Hex color F8547C looks on a white background.

Color Contrast Check

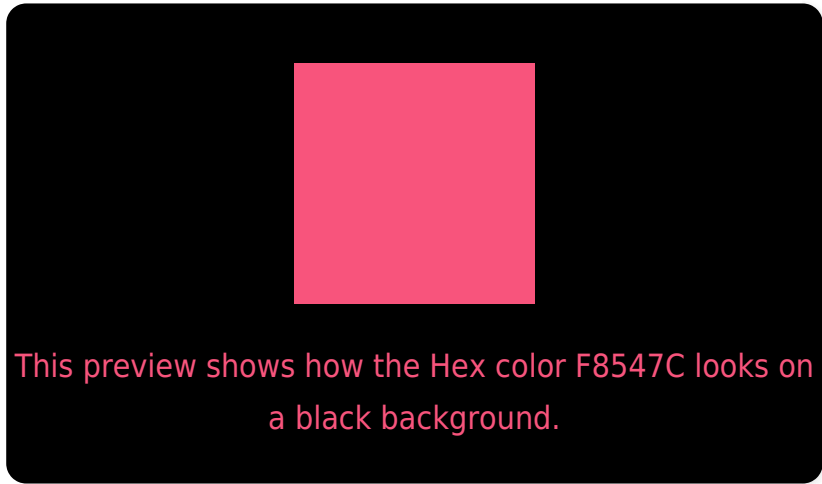
Large Text (above 18pt) WCAG AA ✓ Pass

Any Text WCAG AA ✗ Fail

Large Text (above 18pt) WCAG AAA ✗ Fail

Any Text WCAG AAA ✗ Fail

Black Background



Color Contrast Check

Large Text (above 18pt) WCAG AA ✓ Pass

Any Text WCAG AA ✓ Pass

Large Text (above 18pt) WCAG AAA ✓ Pass

Any Text WCAG AAA × Fail

If you want to check with other color combinations, try the [Color Contrast Checker](#).

Hex F8547C Background



This preview shows how black text looks on a background with the Hex color F8547C.



This preview shows how white text looks on a background with the Hex color F8547C.

Color Blindness Simulation

Color vision deficiency is a very complex topic, and I could not describe the different causes any better than Wikipedia does, so if you want to learn more, you should check out their [article about color blindness](#).

Dichromacy



Original Color
F8547C

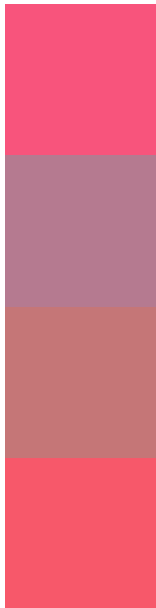
Protanopia
8F8F9B

Deuteranopia
A88A74



Tritanopia
F65A5F

Trichromacy



Original Color
F8547C

Protanomaly
B57A90

Deuteranomaly
C57677

Tritanomaly
F7586A

Monochromacy



Original Color
F8547C

Achromatopsia
8A8A8A

Achromatomaly
B27685

CSS Examples

Text

The CSS property to change the color of the text to Hex F8547C is called "color". The color property can be set on classes, ids or directly on the HTML element.

This example shows how text in the color #F8547C looks like.

```
.text, #text, p{  
    color:#F8547C  
}
```

If you want to add a text shadow in that color use the text-shadow property, you can generate a text shadow directly with our [CSS Text Shadow Generator](#).

Here you see how black text with a 4 pixel #F8547C colored shadow looks like.

```
.shadow{ text-shadow: 4px 4px 2px #F8547C
}
```

Border

The CSS property to change the border of an element to Hex F8547C is called "border". The border property can be set on classes, ids or directly on the HTML element.

This example shows the color as border, it can be applied via the CSS property "border" or "border-color".

```
.border, #border, table{ border:4px solid
#F8547C }
```

If only the border color should be changed use the property border-color.

```
.border{ border-color:#F8547C }
```

If you want to add a box shadow in that color use:

Here you see how a box with a 4 pixel #F8547C colored shadow looks like.

```
.boxshadow{ -moz-box-shadow:4px 4px 4px  
4px #F8547C; -webkit-box-shadow:4px 4px  
4px 4px #F8547C; box-shadow:4px 4px 4px  
4px #F8547C }
```

Background

The CSS property to change the background color of an element to Hex F8547C is called "background". The background property can be set on classes, ids or directly on the HTML element.

```
.background, #background, body{  
background:#F8547C }
```

If only the background color should be changed can be used:

```
.background{ background-color:#F8547C }
```

This example shows the color as background, it is applied via the CSS property "background".

To optimize and compress your CSS code, you can use our [online CSS compressor and optimizer](#) based on csstidy. If you want to create a linear or radial gradient as background or border, check our [CSS Gradient Generator](#).

Hey! You found this booklet interesting? Support Converting Colors with the new Membership Option!

The pro membership hides all ads, plus gives you double the colors in the color bucket, and more awesome pro features!

[Learn more, Memberships starting at \\$2.50/m!](#)

**Follow me
on Twitter!**

@ConvertingColor