

Converting Colors

Hex(F85587)

Have a look what the booklet for
Hex(F85587) contains.

Hex(F85587)	3
<i>Conversions</i>	4
<i>Details</i>	6
<i>Harmonies</i>	11
<i>Previews</i>	23
<i>Color Blindness Simulation</i>	26
<i>CSS Examples</i>	29

Color

Hex(F85587)

Conversions

Conversions Part 1

Format	Color
Hex	F85587
RGB	248, 85, 135
RGB Percent	97%, 33%, 53%
CMY	0.0275, 0.6667, 0.4706
CMYK	0.00, 0.66, 0.46, 0.03
HSL	342°, 92%, 65%
HSV	342°, 66%, 97%
XYZ	46.3331, 28.2027, 25.9233
YIQ	139.4370, 81.0980, 50.1060

Conversions

Conversions Part 2

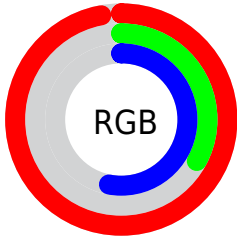
Format	Color
R_{YB}	248, 85, 135
Decimal	16274823
CIE Lab	60.07, 65.61, 7.20
CIE LCh	60, 66.008, 6.262
Yxy	28.2027, 0.4612, 0.2807
Android (android.graphics.Color)	4294464903 (0xFFFF85587)
YUV	139.4370, -2.1874, 95.2098
Hunter-Lab	53.1062, 62.7982, 8.2325

Details

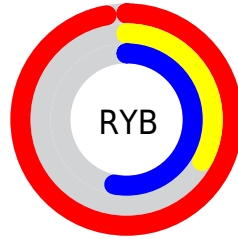
The Hex color **F85587** is a light color, and the websafe version is hex **FF6699**. The color can be described as light muted rose. A complement of this color would be **55F8C6**, and the grayscale version is **8B8B8B**.

A 20% lighter version of the original color is **FF8FBC**, and **BA0756** is the 20% darker color. If you saturate the color by 10%, you get **F83C76**, and if you desaturate by 10%, it is **F86E98**.

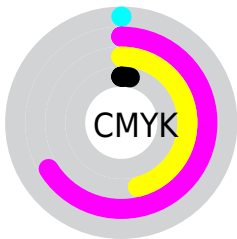
Distribution



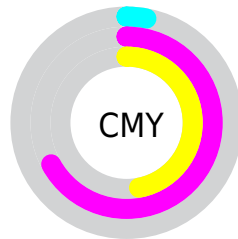
- Red (97%)
- Green (33%)
- Blue (53%)



- Red (97%)
- Yellow (33%)
- Blue (53%)



- Cyan (0%)
- Magenta (66%)
- Yellow (46%)
- Black (3%)



- Cyan (3%)
- Magenta (67%)
- Yellow (47%)

Brightness & Saturation Gradients

These gradients show how the Hex color F85587 changes by changing the brightness by 10 percent. The first figure shows a shift by +10% for each color and the second figure -10%.

Similar to the brightness gradients but the following saturation gradients show a change of the Hex color F85587 by changing the saturation by 10% instead.

 F85587

 F85587

FFFFFF

 D9366E

 FF8FBC

 BA0756

 FFACD8

 9C003F

 FFC9F4

 7E0029

 FFE7FF

 600015

 450003

 240001

 000000

 F85587

 F85587

 F83C76

 F86E98

 F82365

 F887A9

 F80B53

 F89FBB

 F8004C

 F8B8CC

 F8D1DD

 F8EAEE

 F8FFFF

Harmonies

Analogous

The Analogous color harmony consists of three colors that are next to each other on the color wheel.



E061C1



F85587



F1634F

Triad

The Triadic color harmony groups three colors that are evenly spaced from another and form a triangle on the color wheel.



F85587



64A128



00A3FB

Complementary

The Complementary color scheme is a pair of colors which are on the opposite of each other on the color wheel.



F85587



55F8C6

Split Complementary

Split-complementary colors differ from the complementary color scheme. The scheme consists of three colors, the original color and two neighbors of the complement color.



00AAD4



F85587



00A95F

Square

The Square scheme is like the rectangle color scheme, but the four colors are evenly spaced on the color wheel.



F85587



A29200



00AC9C



0094FF

Rectangle

The Rectangle color scheme consists of four colors that form a rectangle on the color wheel.



F85587



DE742E



00AC9C



00A6F1

Sweetspot

The Sweet Spot groups the original color and five complimentary colors.



F85587



FFCCDC



C455F8



80616A



000000



808080

Same Dimension

The Same Dimension uses a secret algorithm to generate beautiful new colors.



F85587



FF3673



F87355



7D7074



BD003A



3D0013

Inverse Universe

The Inverse Universe completely reimagines the original color for something new.



F85587



FF3673



55DAF8



7D7074



BD003A



3D0013

Previews

White Background



This preview shows how the Hex color F85587 looks on a white background.

Color Contrast Check

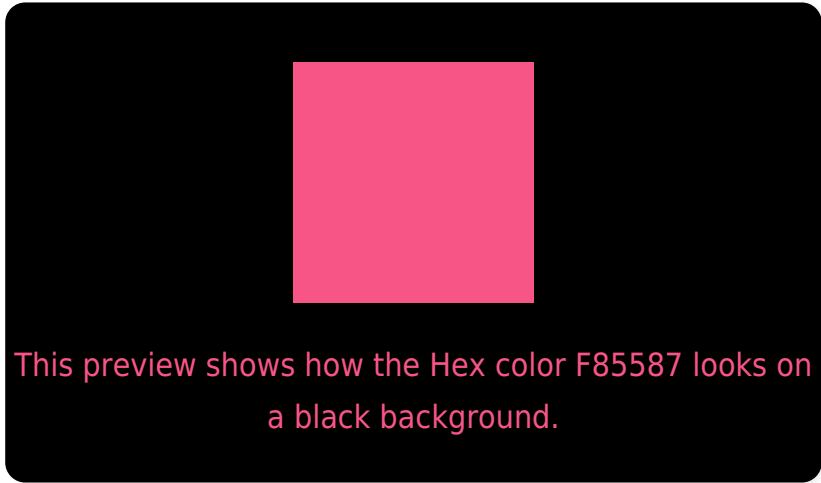
Large Text (above 18pt) WCAG AA ✓ Pass

Any Text WCAG AA × Fail

Large Text (above 18pt) WCAG AAA × Fail

Any Text WCAG AAA × Fail

Black Background



Color Contrast Check

Large Text (above 18pt) WCAG AA ✓ Pass

Any Text WCAG AA ✓ Pass

Large Text (above 18pt) WCAG AAA ✓ Pass

Any Text WCAG AAA × Fail

If you want to check with other color combinations, try the [Color Contrast Checker](#).

Hex F85587 Background



This preview shows how black text looks on a background with the Hex color F85587.



This preview shows how white text looks on a background with the Hex color F85587.

Color Blindness Simulation

Color vision deficiency is a very complex topic, and I could not describe the different causes any better than Wikipedia does, so if you want to learn more, you should check out their [article about color blindness](#).

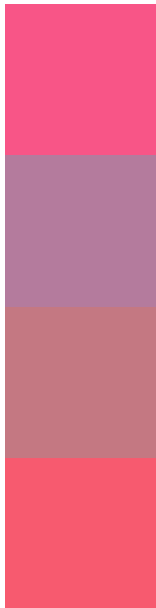
Dichromacy





Tritanopia
F65D62

Trichromacy



Original Color
F85587

Protanomaly
B47B9D

Deuteranomaly
C47882

Tritanomaly
F75A6F

Monochromacy



Original Color
F85587

Achromatopsia
8B8B8B

Achromatomaly
B3778A

CSS Examples

Text

The CSS property to change the color of the text to Hex F85587 is called "color". The color property can be set on classes, ids or directly on the HTML element.

This example shows how text in the color #F85587 looks like.

```
.text, #text, p{  
    color:#F85587  
}
```

If you want to add a text shadow in that color use the text-shadow property, you can generate a text shadow directly with our [CSS Text Shadow Generator](#).

Here you see how black text with a 4 pixel #F85587 colored shadow looks like.

```
.shadow{ text-shadow: 4px 4px 2px #F85587
}
```

Border

The CSS property to change the border of an element to Hex F85587 is called "border". The border property can be set on classes, ids or directly on the HTML element.

This example shows the color as border, it can be applied via the CSS property "border" or "border-color".

```
.border, #border, table{ border:4px solid
#F85587 }
```

If only the border color should be changed use the property `border-color`.

```
.border{ border-color:#F85587 }
```

If you want to add a box shadow in that color use:

Here you see how a box with a 4 pixel #F85587 colored shadow looks like.

```
.boxshadow{ -moz-box-shadow:4px 4px 4px  
4px #F85587; -webkit-box-shadow:4px 4px  
4px 4px #F85587; box-shadow:4px 4px 4px  
4px #F85587 }
```

Background

The CSS property to change the background color of an element to Hex F85587 is called "background". The background property can be set on classes, ids or directly on the HTML element.

```
.background, #background, body{  
background:#F85587 }
```

If only the background color should be changed can be used:

```
.background{ background-color:#F85587 }
```

This example shows the color as background, it is applied via the CSS property "background".

To optimize and compress your CSS code, you can use our [online CSS compressor and optimizer](#) based on csstidy. If you want to create a linear or radial gradient as background or border, check our [CSS Gradient Generator](#).

Hey! You found this booklet interesting? Support Converting Colors with the new Membership Option!

The pro membership hides all ads, plus gives you double the colors in the color bucket, and more awesome pro features!

[Learn more, Memberships starting at \\$2.50/m!](#)

**Follow me
on Twitter!**

@ConvertingColor