

Converting Colors

Hex(F85B98)

Have a look what the booklet for
Hex(F85B98) contains.

Hex(F85B98)	3
<i>Conversions</i>	4
<i>Details</i>	6
<i>Harmonies</i>	11
<i>Previews</i>	23
<i>Color Blindness Simulation</i>	26
<i>CSS Examples</i>	29

Color

Hex(F85B98)

Conversions

Conversions Part 1

Format	Color
Hex	F85B98
RGB	248, 91, 152
RGB Percent	97%, 36%, 60%
CMY	0.0275, 0.6431, 0.4039
CMYK	0.00, 0.63, 0.39, 0.03
HSL	337°, 92%, 66%
HSV	337°, 63%, 97%
XYZ	48.1200, 29.7056, 32.9033
YIQ	144.8970, 73.9910, 52.2550

Conversions

Conversions Part 2

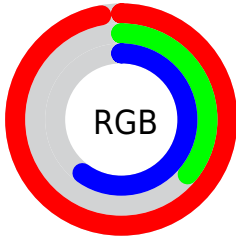
Format	Color
R _Y B	248, 91, 152
Decimal	16276376
CIE Lab	61.40, 64.89, -0.76
CIE LCh	61, 64.890, 359.325
Yxy	29.7056, 0.4346, 0.2683
Android (android.graphics.Color)	4294466456 (0xFFFF85B98)
YUV	144.8970, 3.5018, 90.4213
Hunter-Lab	54.5029, 62.2157, 2.3587

Details

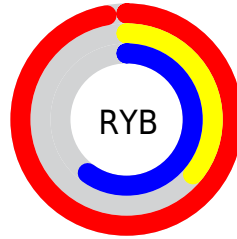
The Hex color **F85B98** is a light color, and the websafe version is hex **FF6699**. The color can be described as light muted rose. A complement of this color would be **5BF8BB**, and the grayscale version is **919191**.

A 20% lighter version of the original color is **FF95CE**, and **BB1765** is the 20% darker color. If you saturate the color by 10%, you get **F84289**, and if you desaturate by 10%, it is **F874A7**.

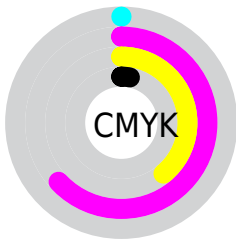
Distribution



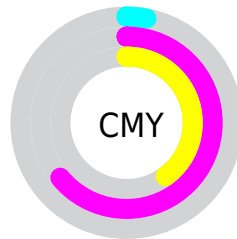
- Red (97%)
- Green (36%)
- Blue (60%)



- Red (97%)
- Yellow (36%)
- Blue (60%)



- Cyan (0%)
- Magenta (63%)
- Yellow (39%)
- Black (3%)



- Cyan (3%)
- Magenta (64%)
- Yellow (40%)

Brightness & Saturation Gradients

These gradients show how the Hex color F85B98 changes by changing the brightness by 10 percent. The first figure shows a shift by +10% for each color and the second figure -10%.

Similar to the brightness gradients but the following saturation gradients show a change of the Hex color F85B98 by changing the saturation by 10% instead.

 F85B98

 F85B98

FFFFFF

 D93D7E

 FF95CE

 BB1765

 FFB1EA

 9D004D

 FFCFFF

 800037

 FFECFF

 620022

 48000B

 290001

 000000

 F85B98

 F85B98

 F84289

 F874A7

 F8297A

 F88DB6

 F8116B

 F8A5C5

 F80060

 F8BED5

 F8D7E4

 F8F0F3

 F8FFFF

Harmonies

Analogous

The Analogous color harmony consists of three colors that are next to each other on the color wheel.



D86BD0



F85B98



F86360

Triad

The Triadic color harmony groups three colors that are evenly spaced from another and form a triangle on the color wheel.



F85B98



79A123



00A9F7

Complementary

The Complementary color scheme is a pair of colors which are on the opposite of each other on the color wheel.



F85B98



5BF8BB

Split Complementary

Split-complementary colors differ from the complementary color scheme. The scheme consists of three colors, the original color and two neighbors of the complement color.



00AFCB



F85B98



0AAB56

Square

The Square scheme is like the rectangle color scheme, but the four colors are evenly spaced on the color wheel.



F85B98



B29105



00AF91



009BFF

Rectangle

The Rectangle color scheme consists of four colors that form a rectangle on the color wheel.



F85B98



E9723E



00AF91



00ABEA

Sweetspot

The Sweet Spot groups the original color and five complimentary colors.



F85B98



FFCFE1



B95BF8



80626E



000000



808080

Same Dimension

The Same Dimension uses a secret algorithm to generate beautiful new colors.



F85B98



FF3D88



F86B5B



7D7075



BD0049



3D0018

Inverse Universe

The Inverse Universe completely reimagines the original color for something new.



F85B98



FF3D88



5BE8F8



7D7075



BD0049



3D0018

Previews

White Background



This preview shows how the Hex color F85B98 looks on a white background.

Color Contrast Check

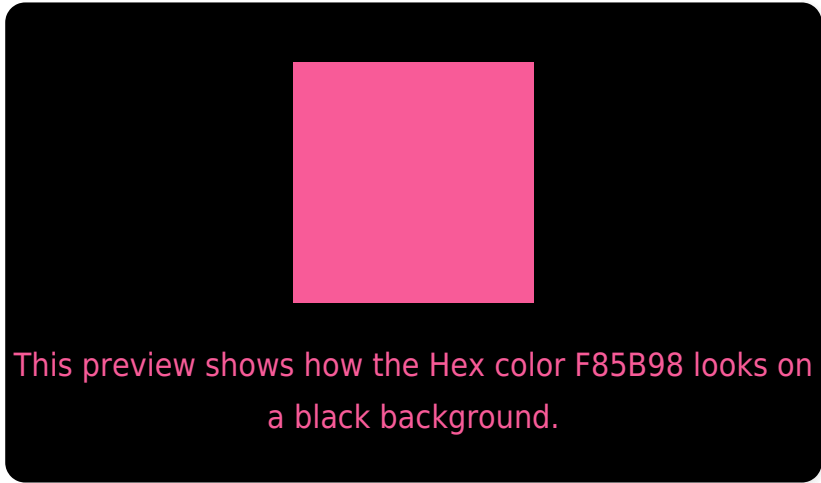
Large Text (above 18pt) WCAG AA ✓ Pass

Any Text WCAG AA × Fail

Large Text (above 18pt) WCAG AAA × Fail

Any Text WCAG AAA × Fail

Black Background



Color Contrast Check

Large Text (above 18pt) WCAG AA ✓ Pass

Any Text WCAG AA ✓ Pass

Large Text (above 18pt) WCAG AAA ✓ Pass

Any Text WCAG AAA × Fail

If you want to check with other color combinations, try the [Color Contrast Checker](#).

Hex F85B98 Background



This preview shows how black text looks on a background with the Hex color F85B98.



This preview shows how white text looks on a background with the Hex color F85B98.

Color Blindness Simulation

Color vision deficiency is a very complex topic, and I could not describe the different causes any better than Wikipedia does, so if you want to learn more, you should check out their [article about color blindness](#).

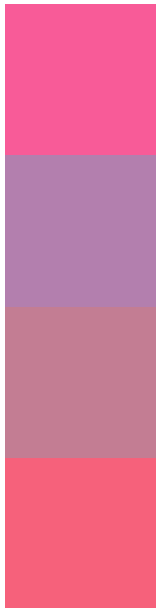
Dichromacy





Tritanopia
F5656B

Trichromacy



Original Color
F85B98

Protanomaly
B37FAE

Deuteranomaly
C37D93

Tritanomaly
F6617B

Monochromacy



Original Color
F85B98

Achromatopsia
919191

Achromatomaly
B67D94

CSS Examples

Text

The CSS property to change the color of the text to Hex F85B98 is called "color". The color property can be set on classes, ids or directly on the HTML element.

This example shows how text in the color #F85B98 looks like.

```
.text, #text, p{  
  color:#F85B98  
}
```

If you want to add a text shadow in that color use the text-shadow property, you can generate a text shadow directly with our [CSS Text Shadow Generator](#).

Here you see how black text with a 4 pixel #F85B98 colored shadow looks like.

```
.shadow{ text-shadow: 4px 4px 2px #F85B98
}
```

Border

The CSS property to change the border of an element to Hex F85B98 is called "border". The border property can be set on classes, ids or directly on the HTML element.

This example shows the color as border, it can be applied via the CSS property "border" or "border-color".

```
.border, #border, table{ border:4px solid
#F85B98 }
```

If only the border color should be changed use the property `border-color`.

```
.border{ border-color:#F85B98 }
```

If you want to add a box shadow in that color use:

Here you see how a box with a 4 pixel #F85B98 colored shadow looks like.

```
.boxshadow{ -moz-box-shadow:4px 4px 4px  
4px #F85B98; -webkit-box-shadow:4px 4px  
4px 4px #F85B98; box-shadow:4px 4px 4px  
4px #F85B98 }
```

Background

The CSS property to change the background color of an element to Hex F85B98 is called "background". The background property can be set on classes, ids or directly on the HTML element.

```
.background, #background, body{  
background:#F85B98 }
```

If only the background color should be changed can be used:

```
.background{ background-color:#F85B98 }
```

This example shows the color as background, it is applied via the CSS property "background".

To optimize and compress your CSS code, you can use our [online CSS compressor and optimizer](#) based on csstidy. If you want to create a linear or radial gradient as background or border, check our [CSS Gradient Generator](#).

Hey! You found this booklet interesting? Support Converting Colors with the new Membership Option!

The pro membership hides all ads, plus gives you double the colors in the color bucket, and more awesome pro features!

[Learn more, Memberships starting at \\$2.50/m!](#)

**Follow me
on Twitter!**

@ConvertingColor