

Converting Colors

Hex(F86479)

Have a look what the booklet for
Hex(F86479) contains.

Hex(F86479)	3
<i>Conversions</i>	4
<i>Details</i>	6
<i>Harmonies</i>	11
<i>Previews</i>	23
<i>Color Blindness Simulation</i>	26
<i>CSS Examples</i>	29

Color

Hex(F86479)

Conversions

Conversions Part 1

Format	Color
Hex	F86479
RGB	248, 100, 121
RGB Percent	97%, 39%, 47%
CMY	0.0275, 0.6078, 0.5255
CMYK	0.00, 0.60, 0.51, 0.03
HSL	351°, 91%, 68%
HSV	351°, 60%, 97%
XYZ	46.7198, 30.4513, 21.5044
YIQ	146.6460, 81.4670, 37.9070

Conversions

Conversions Part 2

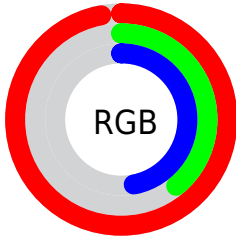
Format	Color
R _Y B	248, 100, 121
Decimal	16278649
CIE Lab	62.04, 58.21, 18.08
CIE LCh	62, 60.958, 17.257
Yxy	30.4513, 0.4735, 0.3086
Android (android.graphics.Color)	4294468729 (0xFF86479)
YUV	146.6460, -12.6435, 88.8875
Hunter-Lab	55.1827, 54.5552, 15.5228

Details

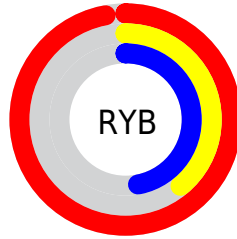
The Hex color **F86479** is a light color, and the websafe version is hex **FF6666**. A complement of this color would be **64F8E3**, and the grayscale version is **939393**.

A 20% lighter version of the original color is **FF9CAD**, and **BA2949** is the 20% darker color. If you saturate the color by 10%, you get **F84B64**, and if you desaturate by 10%, it is **F87D8E**.

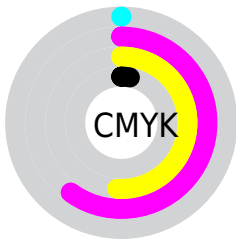
Distribution



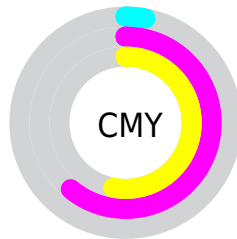
- Red (97%)
- Green (39%)
- Blue (47%)



- Red (97%)
- Yellow (39%)
- Blue (47%)



- Cyan (0%)
- Magenta (60%)
- Yellow (51%)
- Black (3%)



- Cyan (3%)
- Magenta (61%)
- Yellow (53%)

Brightness & Saturation Gradients

These gradients show how the Hex color F86479 changes by changing the brightness by 10 percent. The first figure shows a shift by +10% for each color and the second figure -10%.

Similar to the brightness gradients but the following saturation gradients show a change of the Hex color F86479 by changing the saturation by 10% instead.

 F86479

 F86479

FFFFFF

 D94860

 FF9CAD

 BA2949

 FFB9C8

 9C0032

 FFD6E4

 7E001E

 FFF3FF

 610005

 440002

 250001

 000000

 F86479

 F86479

 F84B64

 F87D8E

 F8324E

 F896A4

 F81A39

 F8AEB9

 F80124

 F8C7CE

 F80023

 F8E0E3

 F8F9F9

 F8FFFF

Harmonies

Analogous

The Analogous color harmony consists of three colors that are next to each other on the color wheel.



EC66AF



F86479



E97548

Triad

The Triadic color harmony groups three colors that are evenly spaced from another and form a triangle on the color wheel.



F86479



54A848



00A3FF

Complementary

The Complementary color scheme is a pair of colors which are on the opposite of each other on the color wheel.



F86479



64F8E3

Split Complementary

Split-complementary colors differ from the complementary color scheme. The scheme consists of three colors, the original color and two neighbors of the complement color.



00ACE4



F86479



00AE7C

Square

The Square scheme is like the rectangle color scheme, but the four colors are evenly spaced on the color wheel.



F86479



949D21



00B0B4



6A91FE

Rectangle

The Rectangle color scheme consists of four colors that form a rectangle on the color wheel.



F86479



D3842E



00B0B4



00A7F9

Sweetspot

The Sweet Spot groups the original color and five complimentary colors.



F86479



FFD1D8



E264F8



806367



000000



808080

Same Dimension

The Same Dimension uses a secret algorithm to generate beautiful new colors.



F86479



FF4761



F89864



7D7072



BD001B



3D0009

Inverse Universe

The Inverse Universe completely reimagines the original color for something new.



F86479



FF4761



64C4F8



7D7072



BD001B



3D0009

Previews

White Background



This preview shows how the Hex color F86479 looks on a white background.

Color Contrast Check

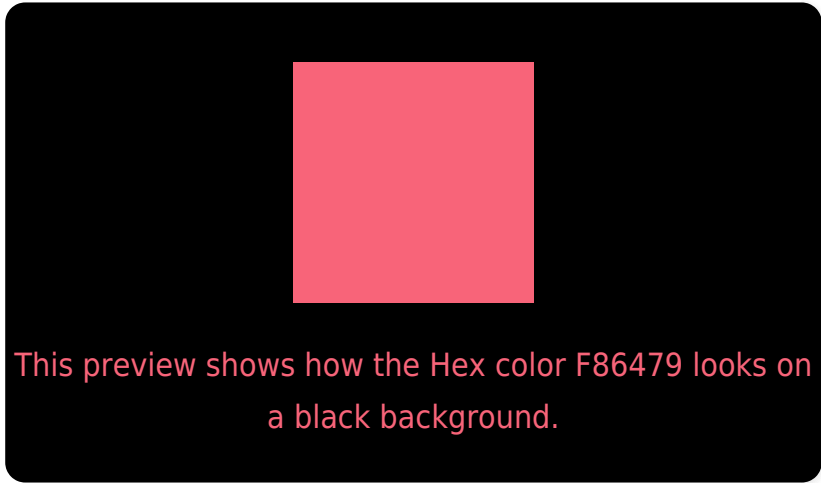
Large Text (above 18pt) WCAG AA × Fail

Any Text WCAG AA × Fail

Large Text (above 18pt) WCAG AAA × Fail

Any Text WCAG AAA × Fail

Black Background



Color Contrast Check

Large Text (above 18pt) WCAG AA ✓ Pass

Any Text WCAG AA ✓ Pass

Large Text (above 18pt) WCAG AAA ✓ Pass

Any Text WCAG AAA ✓ Pass

If you want to check with other color combinations, try the [Color Contrast Checker](#).

Hex F86479 Background



This preview shows how black text looks on a background with the Hex color F86479.

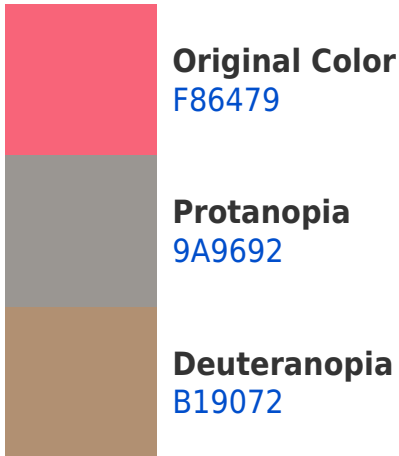



This preview shows how white text looks on a background with the Hex color F86479.

Color Blindness Simulation

Color vision deficiency is a very complex topic, and I could not describe the different causes any better than Wikipedia does, so if you want to learn more, you should check out their [article about color blindness](#).

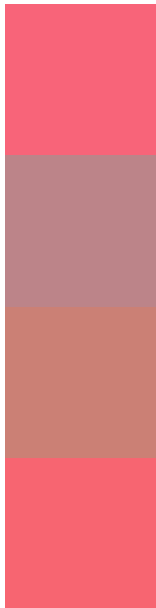
Dichromacy





Tritanopia
F7666D

Trichromacy



Original Color
F86479

Protanomaly
BC8489

Deuteranomaly
CB8075

Tritanomaly
F76571

Monochromacy



Original Color
F86479

Achromatopsia
939393

Achromatomaly
B8828A

CSS Examples

Text

The CSS property to change the color of the text to Hex F86479 is called "color". The color property can be set on classes, ids or directly on the HTML element.

This example shows how text in the color #F86479 looks like.

```
.text, #text, p{  
    color:#F86479  
}
```

If you want to add a text shadow in that color use the text-shadow property, you can generate a text shadow directly with our [CSS Text Shadow Generator](#).

Here you see how black text with a 4 pixel #F86479 colored shadow looks like.

```
.shadow{ text-shadow: 4px 4px 2px #F86479
}
```

Border

The CSS property to change the border of an element to Hex F86479 is called "border". The border property can be set on classes, ids or directly on the HTML element.

This example shows the color as border, it can be applied via the CSS property "border" or "border-color".

```
.border, #border, table{ border:4px solid
#F86479 }
```

If only the border color should be changed use the property `border-color`.

```
.border{ border-color:#F86479 }
```

If you want to add a box shadow in that color use:

Here you see how a box with a 4 pixel #F86479 colored shadow looks like.

```
.boxshadow{ -moz-box-shadow:4px 4px 4px  
4px #F86479; -webkit-box-shadow:4px 4px  
4px 4px #F86479; box-shadow:4px 4px 4px  
4px #F86479 }
```

Background

The CSS property to change the background color of an element to Hex F86479 is called "background". The background property can be set on classes, ids or directly on the HTML element.

```
.background, #background, body{  
background:#F86479 }
```

If only the background color should be changed can be used:

```
.background{ background-color:#F86479 }
```

This example shows the color as background, it is applied via the CSS property "background".

To optimize and compress your CSS code, you can use our [online CSS compressor and optimizer](#) based on csstidy. If you want to create a linear or radial gradient as background or border, check our [CSS Gradient Generator](#).

Hey! You found this booklet interesting? Support Converting Colors with the new Membership Option!

The pro membership hides all ads, plus gives you double the colors in the color bucket, and more awesome pro features!

[Learn more, Memberships starting at \\$2.50/m!](#)

**Follow me
on Twitter!**

@ConvertingColor