

Converting Colors

Hex(F86F89)

Have a look what the booklet for
Hex(F86F89) contains.

Hex(F86F89)	3
<i>Conversions</i>	4
<i>Details</i>	6
<i>Harmonies</i>	11
<i>Previews</i>	23
<i>Color Blindness Simulation</i>	26
<i>CSS Examples</i>	29

Color

Hex(F86F89)

Conversions

Conversions Part 1

Format	Color
Hex	F86F89
RGB	248, 111, 137
RGB Percent	97%, 44%, 54%
CMY	0.0275, 0.5647, 0.4627
CMYK	0.00, 0.55, 0.45, 0.03
HSL	349°, 91%, 70%
HSV	349°, 55%, 97%
XYZ	48.9112, 33.1315, 27.4840
YIQ	154.9270, 73.3060, 37.1300

Conversions

Conversions Part 2

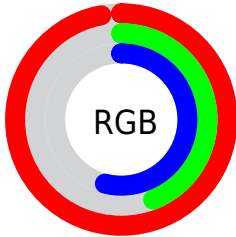
Format	Color
R_{YB}	248, 111, 137
Decimal	16281481
CIE _{Lab}	64.27, 54.70, 11.99
CIE _{LCh}	64, 55.996, 12.369
Yxy	33.1315, 0.4466, 0.3025
Android (android.graphics.Color)	4294471561 (0xFFFF86F89)
YUV	154.9270, -8.8380, 81.6250
Hunter-Lab	57.5600, 50.9493, 11.9819

Details

The Hex color **F86F89** is a light color, and the websafe version is hex **FF6699**. A complement of this color would be **6FF8DE**, and the grayscale version is **9B9B9B**.

A 20% lighter version of the original color is **FFA7BE**, and **BB3757** is the 20% darker color. If you saturate the color by 10%, you get **F85675**, and if you desaturate by 10%, it is **F8889D**.

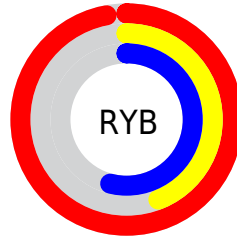
Distribution



Red (97%)

Green (44%)

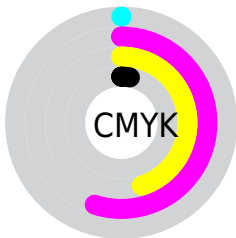
Blue (54%)



Red (97%)

Yellow (44%)

Blue (54%)

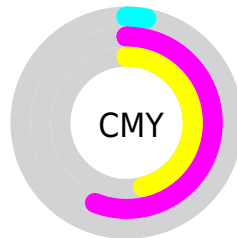


Cyan (0%)

Magenta (55%)

Yellow (45%)

Black (3%)



Cyan (3%)

Magenta (56%)

Yellow (46%)

Brightness & Saturation Gradients

These gradients show how the Hex color F86F89 changes by changing the brightness by 10 percent. The first figure shows a shift by +10% for each color and the second figure -10%.

Similar to the brightness gradients but the following saturation gradients show a change of the Hex color F86F89 by changing the saturation by 10% instead.

 F86F89

 F86F89

FFFFFF

 D95370

 FFA7BE

 BB3757

 FFC3DA

 9D1640

 FFE0F6

 80002B

FFFEFF

 630017

 470001

 2B0001

 000000

 F86F89

 F86F89

 F85675

 F8889D

 F83D61

 F8A1B1

 F8254D

 F8B9C5

 F80C39

 F8D2D9

 F8002F

 F8EBED

 F8FFFF

Harmonies

Analogous

The Analogous color harmony consists of three colors that are next to each other on the color wheel.



E874BB



F86F89



EE7B5B

Triad

The Triadic color harmony groups three colors that are evenly spaced from another and form a triangle on the color wheel.



F86F89



6CAC4E



00A9FB

Complementary

The Complementary color scheme is a pair of colors which are on the opposite of each other on the color wheel.



F86F89



6FF8DE

Split Complementary

Split-complementary colors differ from the complementary color scheme. The scheme consists of three colors, the original color and two neighbors of the complement color.



00B2DE



F86F89



00B27C

Square

The Square scheme is like the rectangle color scheme, but the four colors are evenly spaced on the color wheel.



F86F89



A4A033



00B4B0



669AFE

Rectangle

The Rectangle color scheme consists of four colors that form a rectangle on the color wheel.



F86F89



DB8842



00B4B0



00ADF4

Sweetspot

The Sweet Spot groups the original color and five complimentary colors.



F86F89



FFD4DC



DD6FF8



80666B



000000



808080

Same Dimension

The Same Dimension uses a secret algorithm to generate beautiful new colors.



F86F89



FF5777



F8986F



7D7073



BD0024



3D000C

Inverse Universe

The Inverse Universe completely reimagines the original color for something new.



F86F89



FF5777



6FCFF8



7D7073



BD0024



3D000C

Previews

White Background



This preview shows how the Hex color F86F89 looks on a white background.

Color Contrast Check

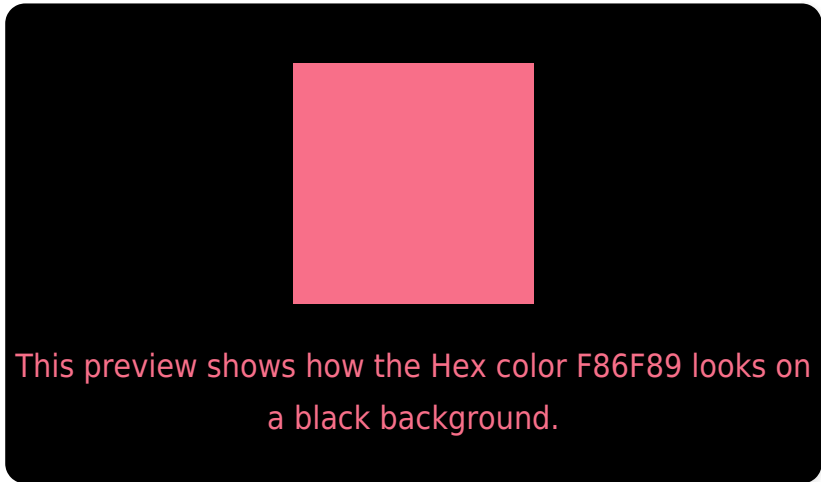
Large Text (above 18pt) WCAG AA × Fail

Any Text WCAG AA × Fail

Large Text (above 18pt) WCAG AAA × Fail

Any Text WCAG AAA × Fail

Black Background



Color Contrast Check

Large Text (above 18pt) WCAG AA ✓ Pass

Any Text WCAG AA ✓ Pass

Large Text (above 18pt) WCAG AAA ✓ Pass

Any Text WCAG AAA ✓ Pass

If you want to check with other color combinations, try the [Color Contrast Checker](#).

Hex F86F89 Background



This preview shows how black text looks on a background with the Hex color F86F89.

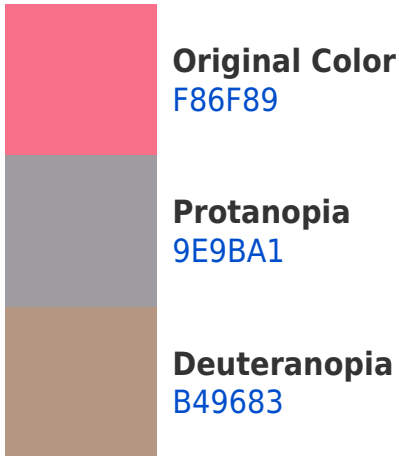


This preview shows how white text looks on a background with the Hex color F86F89.

Color Blindness Simulation

Color vision deficiency is a very complex topic, and I could not describe the different causes any better than Wikipedia does, so if you want to learn more, you should check out their [article about color blindness](#).

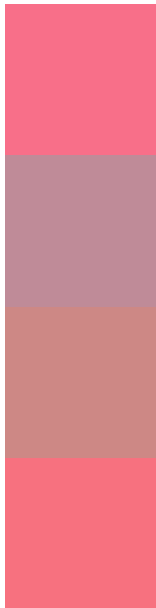
Dichromacy





Tritanopia
F7727A

Trichromacy



Original Color
F86F89

Protanomaly
BF8B98

Deuteranomaly
CD8885

Tritanomaly
F7717F

Monochromacy



Original Color
F86F89

Achromatopsia
9B9B9B

Achromatomaly
BD8B94

CSS Examples

Text

The CSS property to change the color of the text to Hex F86F89 is called "color". The color property can be set on classes, ids or directly on the HTML element.

This example shows how text in the color #F86F89 looks like.

```
.text, #text, p{  
    color:#F86F89  
}
```

If you want to add a text shadow in that color use the text-shadow property, you can generate a text shadow directly with our [CSS Text Shadow Generator](#).

Here you see how black text with a 4 pixel #F86F89 colored shadow looks like.

```
.shadow{ text-shadow: 4px 4px 2px #F86F89
}
```

Border

The CSS property to change the border of an element to Hex F86F89 is called "border". The border property can be set on classes, ids or directly on the HTML element.

This example shows the color as border, it can be applied via the CSS property "border" or "border-color".

```
.border, #border, table{ border:4px solid
#F86F89 }
```

If only the border color should be changed use the property `border-color`.

```
.border{ border-color:#F86F89 }
```

If you want to add a box shadow in that color use:

Here you see how a box with a 4 pixel #F86F89 colored shadow looks like.

```
.boxshadow{ -moz-box-shadow:4px 4px 4px  
4px #F86F89; -webkit-box-shadow:4px 4px  
4px 4px #F86F89; box-shadow:4px 4px 4px  
4px #F86F89 }
```

Background

The CSS property to change the background color of an element to Hex F86F89 is called "background". The background property can be set on classes, ids or directly on the HTML element.

```
.background, #background, body{  
background:#F86F89 }
```

If only the background color should be changed can be used:

```
.background{ background-color:#F86F89 }
```

This example shows the color as background, it is applied via the CSS property "background".

To optimize and compress your CSS code, you can use our [online CSS compressor and optimizer](#) based on csstidy. If you want to create a linear or radial gradient as background or border, check our [CSS Gradient Generator](#).

Hey! You found this booklet interesting? Support Converting Colors with the new Membership Option!

The pro membership hides all ads, plus gives you double the colors in the color bucket, and more awesome pro features!

[Learn more, Memberships starting at \\$2.50/m!](#)

**Follow me
on Twitter!**

@ConvertingColor