

Converting Colors

Hex(F88B83)

Have a look what the booklet for
Hex(F88B83) contains.

Hex(F88B83)	3
<i>Conversions</i>	4
<i>Details</i>	6
<i>Harmonies</i>	11
<i>Previews</i>	23
<i>Color Blindness Simulation</i>	26
<i>CSS Examples</i>	29

Color

Hex(F88B83)

Conversions

Conversions Part 1

Format	Color
Hex	F88B83
RGB	248, 139, 131
RGB Percent	97%, 55%, 51%
CMY	0.0275, 0.4549, 0.4863
CMYK	0.00, 0.44, 0.47, 0.03
HSL	4°, 89%, 74%
HSV	4°, 47%, 97%
XYZ	52.0408, 40.0604, 26.4623
YIQ	170.6790, 67.5320, 20.6200

Conversions

Conversions Part 2

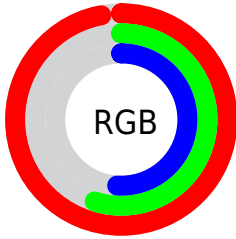
Format	Color
R _Y B	248, 140, 131
Decimal	16288643
CIE Lab	69.51, 40.46, 22.62
CIE LCh	70, 46.354, 29.215
Yxy	40.0604, 0.4389, 0.3379
Android (android.graphics.Color)	4294478723 (0xFFFF88B83)
YUV	170.6790, -19.5617, 67.8105
Hunter-Lab	63.2933, 36.0023, 19.5167

Details

The Hex color **F88B83** is a light color, and the websafe version is hex **FF9999**. A complement of this color would be **83F0F8**, and the grayscale version is **ABABAB**.

A 20% lighter version of the original color is **FFC2B8**, and **BC5652** is the 20% darker color. If you saturate the color by 10%, you get **F8746A**, and if you desaturate by 10%, it is **F8A29C**.

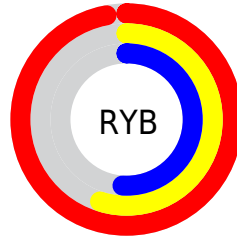
Distribution



Red (97%)

Green (55%)

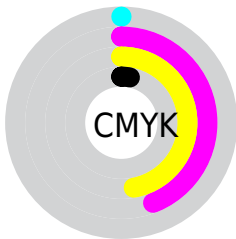
Blue (51%)



Red (97%)

Yellow (55%)

Blue (51%)

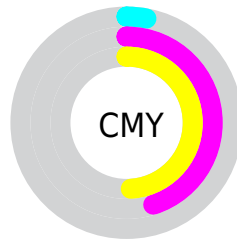


Cyan (0%)

Magenta (44%)

Yellow (47%)

Black (3%)



Cyan (3%)

Magenta (45%)

Yellow (49%)

Brightness & Saturation Gradients

These gradients show how the Hex color F88B83 changes by changing the brightness by 10 percent. The first figure shows a shift by +10% for each color and the second figure -10%.

Similar to the brightness gradients but the following saturation gradients show a change of the Hex color F88B83 by changing the saturation by 10% instead.

 F88B83

 F88B83

FFFFFF

 DA706A

 FFC2B8

 BC5652

 FFDED4

 9F3D3B

 FFFBF0

 822325

 650210

 490000

 310002

 000000

 F88B83

 F88B83

 F8746A

 F8A29C

 F85D51

 F8B9B5

 F84639

 F8D0CD

 F82F20

 F8E7E6

 F81707

 F8FFFF

 F81100

Harmonies

Analogous

The Analogous color harmony consists of three colors that are next to each other on the color wheel.



F687AD



F88B83



E69862

Triad

The Triadic color harmony groups three colors that are evenly spaced from another and form a triangle on the color wheel.



F88B83



65BC7D



60AEFD

Complementary

The Complementary color scheme is a pair of colors which are on the opposite of each other on the color wheel.



F88B83



83F0F8

Split Complementary

Split-complementary colors differ from the complementary color scheme. The scheme consists of three colors, the original color and two neighbors of the complement color.



00B9F1



F88B83



00BFA7

Square

The Square scheme is like the rectangle color scheme, but the four colors are evenly spaced on the color wheel.



F88B83



9AB35E



00BFD1



AB9FF3

Rectangle

The Rectangle color scheme consists of four colors that form a rectangle on the color wheel.



F88B83



D1A256



00BFD1



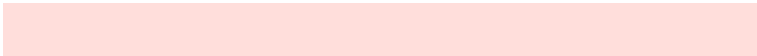
3CB3FC

Sweetspot

The Sweet Spot groups the original color and five complimentary colors.



F88B83



FFDEDB



F883F0



806B6A



000000



808080

Same Dimension

The Same Dimension uses a secret algorithm to generate beautiful new colors.



F88B83



FF786E



F8C583



7D7170



BD0D00



3D0400

Inverse Universe

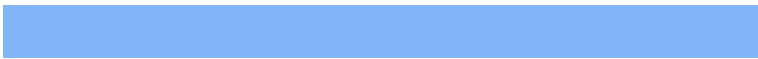
The Inverse Universe completely reimagines the original color for something new.



83F0F8



6EF5FF



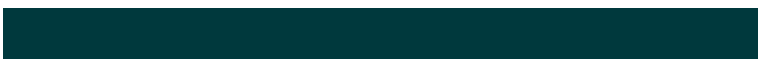
83B6F8



707C7D



00B0BD



00393D

Previews

White Background



This preview shows how the Hex color F88B83 looks on a white background.

Color Contrast Check

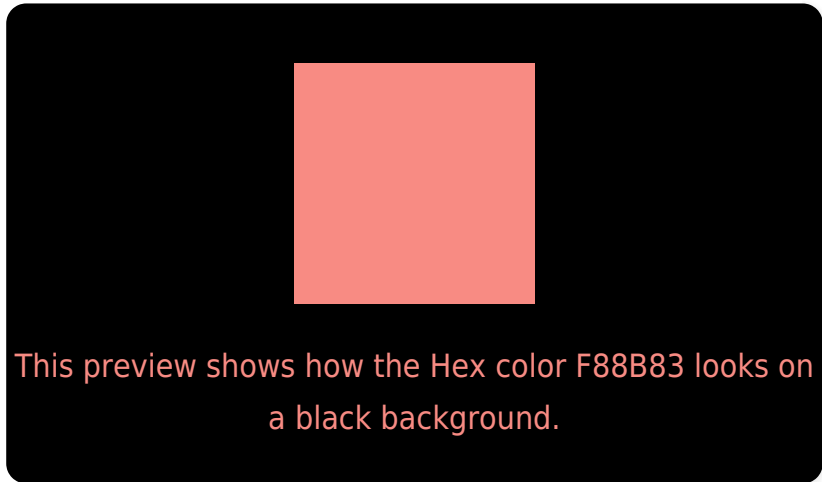
Large Text (above 18pt) WCAG AA × Fail

Any Text WCAG AA × Fail

Large Text (above 18pt) WCAG AAA × Fail

Any Text WCAG AAA × Fail

Black Background



Color Contrast Check

Large Text (above 18pt) WCAG AA ✓ Pass

Any Text WCAG AA ✓ Pass

Large Text (above 18pt) WCAG AAA ✓ Pass

Any Text WCAG AAA ✓ Pass

If you want to check with other color combinations, try the [Color Contrast Checker](#).

Hex F88B83 Background



This preview shows how black text looks on a background with the Hex color F88B83.

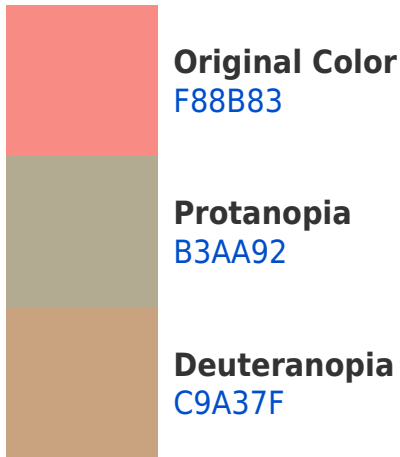


This preview shows how white text looks on a background with the Hex color F88B83.

Color Blindness Simulation

Color vision deficiency is a very complex topic, and I could not describe the different causes any better than Wikipedia does, so if you want to learn more, you should check out their [article about color blindness](#).

Dichromacy



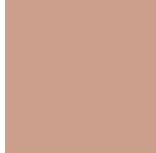


Tritanopia
F98993

Trichromacy



Original Color
F88B83



Protanomaly
CC9F8D



Deuteranomaly
DA9A80



Tritanomaly
F98A8D

Monochromacy



Original Color
F88B83



Achromatopsia
ABABAB



Achromatomaly
C79F9C

CSS Examples

Text

The CSS property to change the color of the text to Hex F88B83 is called "color". The color property can be set on classes, ids or directly on the HTML element.

This example shows how text in the color #F88B83 looks like.

```
.text, #text, p{  
    color:#F88B83  
}
```

If you want to add a text shadow in that color use the text-shadow property, you can generate a text shadow directly with our [CSS Text Shadow Generator](#).

Here you see how black text with a 4 pixel #F88B83 colored shadow looks like.

```
.shadow{ text-shadow: 4px 4px 2px #F88B83
}
```

Border

The CSS property to change the border of an element to Hex F88B83 is called "border". The border property can be set on classes, ids or directly on the HTML element.

This example shows the color as border, it can be applied via the CSS property "border" or "border-color".

```
.border, #border, table{ border:4px solid
#F88B83 }
```

If only the border color should be changed use the property `border-color`.

```
.border{ border-color:#F88B83 }
```

If you want to add a box shadow in that color use:

Here you see how a box with a 4 pixel #F88B83 colored shadow looks like.

```
.boxshadow{ -moz-box-shadow:4px 4px 4px  
4px #F88B83; -webkit-box-shadow:4px 4px  
4px 4px #F88B83; box-shadow:4px 4px 4px  
4px #F88B83 }
```

Background

The CSS property to change the background color of an element to Hex F88B83 is called "background". The background property can be set on classes, ids or directly on the HTML element.

```
.background, #background, body{  
background:#F88B83 }
```

If only the background color should be changed can be used:

```
.background{ background-color:#F88B83 }
```

This example shows the color as background, it is applied via the CSS property "background".

To optimize and compress your CSS code, you can use our [online CSS compressor and optimizer](#) based on csstidy. If you want to create a linear or radial gradient as background or border, check our [CSS Gradient Generator](#).

Hey! You found this booklet interesting? Support Converting Colors with the new Membership Option!

The pro membership hides all ads, plus gives you double the colors in the color bucket, and more awesome pro features!

[Learn more, Memberships starting at \\$2.50/m!](#)

**Follow me
on Twitter!**

@ConvertingColor