

# Converting Colors

Hex(F94C84)

Have a look what the booklet for  
Hex(F94C84) contains.

<b>Hex(F94C84)</b> .....	3
<i><b>Conversions</b></i> .....	4
<i><b>Details</b></i> .....	6
<i><b>Harmonies</b></i> .....	11
<i><b>Previews</b></i> .....	23
<i><b>Color Blindness Simulation</b></i> .....	26
<i><b>CSS Examples</b></i> .....	29

# Color

Hex(F94C84)

# Conversions

## Conversions Part 1

Format	Color
Hex	F94C84
RGB	249, 76, 132
RGB Percent	98%, 30%, 52%
CMY	0.0235, 0.7020, 0.4824
CMYK	0.00, 0.69, 0.47, 0.02
HSL	341°, 94%, 64%
HSV	341°, 69%, 98%
XYZ	45.8162, 26.9746, 24.6216
YIQ	134.1110, 85.1320, 54.0920

# Conversions

## Conversions Part 2

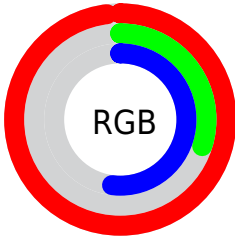
<b>Format</b>	<b>Color</b>
<b>R<sub>YB</sub></b>	249, 76, 132
Decimal	16338052
CIE <sub>Lab</sub>	58.95, 68.98, 7.38
CIE <sub>LCh</sub>	59, 69.370, 6.106
Yxy	26.9746, 0.4703, 0.2769
Android (android.graphics.Color)	4294528132 (0xFFFF94C84)
YUV	134.1110, -1.0407, 100.7577
Hunter-Lab	51.9370, 66.5738, 8.2485

# Details

The Hex color **F94C84** is a light color, and the websafe version is hex **FF6699**. The color can be described as light washed rose. A complement of this color would be **4CF9C1**, and the grayscale version is **868686**.

A 20% lighter version of the original color is **FF88B9**, and **BB0053** is the 20% darker color. If you saturate the color by 10%, you get **F93373**, and if you desaturate by 10%, it is **F96595**.

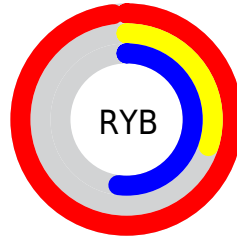
# Distribution



Red (98%)

Green (30%)

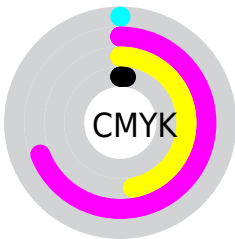
Blue (52%)



Red (98%)

Yellow (30%)

Blue (52%)

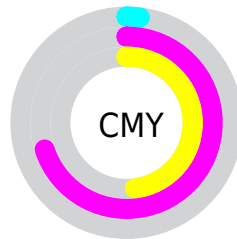


Cyan (0%)

Magenta (69%)

Yellow (47%)

Black (2%)



Cyan (2%)

Magenta (70%)

Yellow (48%)

# Brightness & Saturation Gradients

These gradients show how the Hex color F94C84 changes by changing the brightness by 10 percent. The first figure shows a shift by +10% for each color and the second figure -10%.

Similar to the brightness gradients but the following saturation gradients show a change of the Hex color F94C84 by changing the saturation by 10% instead.



 F94C84

 F94C84

FFFFFF

 DA2A6B

 FF88B9

 BB0053

 FFA5D4

 9C003C

 FFC2F1

 7E0027

 FFE0FF

 600012

FFFEFF

 440003

 230001

 000000

 F94C84

 F94C84

 F93373

 F96595

 F91A62

 F97EA6

 F90151

 F997B7

 F90051

 F9B0C7

 F9C9D8

 F9E1E9

 F9FAFA

 F9FFFF

# Harmonies

## Analogous

The Analogous color harmony consists of three colors that are next to each other on the color wheel.



E05AC0



F94C84



F15D49

# Triad

The Triadic color harmony groups three colors that are evenly spaced from another and form a triangle on the color wheel.



F94C84



5E9E1B



00A1FD

# Complementary

The Complementary color scheme is a pair of colors which are on the opposite of each other on the color wheel.



F94C84



4CF9C1

# Split Complementary

Split-complementary colors differ from the complementary color scheme. The scheme consists of three colors, the original color and two neighbors of the complement color.



00A8D4



F94C84



00A65A

# Square

The Square scheme is like the rectangle color scheme, but the four colors are evenly spaced on the color wheel.



F94C84



9F8F00



00AA99



0091FF

# Rectangle

The Rectangle color scheme consists of four colors that form a rectangle on the color wheel.



F94C84



DE6F24



00AA99



00A4F3



# Sweetspot

The Sweet Spot groups the original color and five complimentary colors.



F94C84



FFC9DB



BF4CF9



80606A



000000



808080



# Same Dimension

The Same Dimension uses a secret algorithm to generate beautiful new colors.



F94C84



FF2B70



F9694C



7D7074



BD003D



3D0014



# Inverse Universe

The Inverse Universe completely reimagines the original color for something new.



F94C84



FF2B70



4CDCF9



7D7074



BD003D



3D0014



# Previews

## White Background



This preview shows how the Hex color F94C84 looks on a white background.

## Color Contrast Check

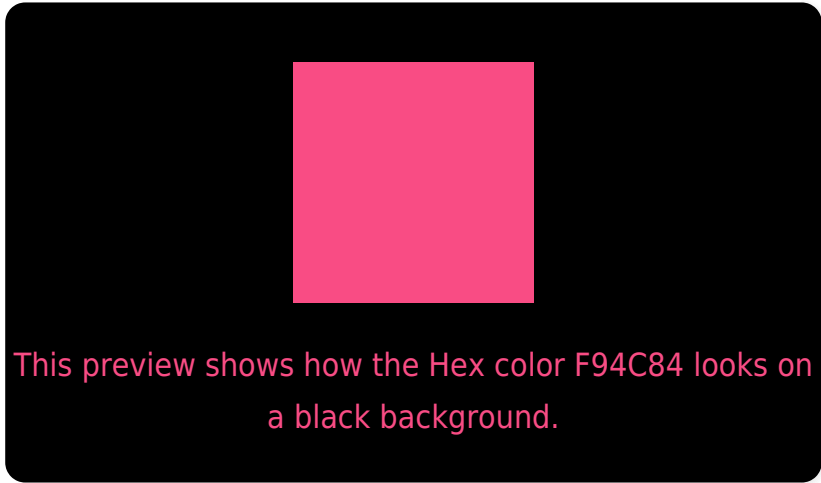
Large Text (above 18pt) WCAG AA ✓ Pass

Any Text WCAG AA × Fail

Large Text (above 18pt) WCAG AAA × Fail

Any Text WCAG AAA × Fail

# Black Background



## Color Contrast Check

Large Text (above 18pt) WCAG AA ✓ Pass

Any Text WCAG AA ✓ Pass

Large Text (above 18pt) WCAG AAA ✓ Pass

Any Text WCAG AAA × Fail

If you want to check with other color combinations, try the [Color Contrast Checker](#).



## Hex F94C84 Background



This preview shows how black text looks on a background with the Hex color F94C84.



This preview shows how white text looks on a background with the Hex color F94C84.

# Color Blindness Simulation

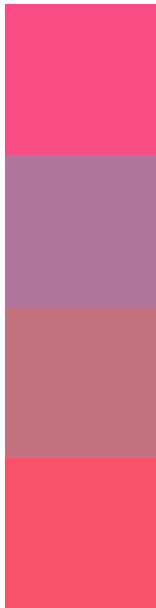
Color vision deficiency is a very complex topic, and I could not describe the different causes any better than Wikipedia does, so if you want to learn more, you should check out their [article about color blindness](#).

## Dichromacy





# Trichromacy



**Original Color**  
F94C84

**Protanomaly**  
B2759C

**Deuteranomaly**  
C2737F

**Tritanomaly**  
F75269

# Monochromacy



**Original Color**  
F94C84

**Achromatopsia**  
868686

**Achromatomaly**  
B07185

# CSS Examples

## Text

The CSS property to change the color of the text to Hex F94C84 is called "color". The color property can be set on classes, ids or directly on the HTML element.

This example shows how text in the color #F94C84 looks like.

```
.text, #text, p{  
  color:#F94C84  
}
```

If you want to add a text shadow in that color use the text-shadow property, you can generate a text shadow directly with our [CSS Text Shadow Generator](#).

Here you see how black text with a 4 pixel #F94C84 colored shadow looks like.

```
.shadow{ text-shadow: 4px 4px 2px #F94C84
}
```

## Border

The CSS property to change the border of an element to Hex F94C84 is called "border". The border property can be set on classes, ids or directly on the HTML element.

This example shows the color as border, it can be applied via the CSS property "border" or "border-color".

```
.border, #border, table{ border:4px solid
#F94C84 }
```

If only the border color should be changed use the property `border-color`.

```
.border{ border-color:#F94C84 }
```

If you want to add a box shadow in that color use:

Here you see how a box with a 4 pixel #F94C84 colored shadow looks like.

```
.boxshadow{ -moz-box-shadow:4px 4px 4px  
4px #F94C84; -webkit-box-shadow:4px 4px  
4px 4px #F94C84; box-shadow:4px 4px 4px  
4px #F94C84 }
```

# Background

The CSS property to change the background color of an element to Hex F94C84 is called "background". The background property can be set on classes, ids or directly on the HTML element.

```
.background, #background, body{  
background:#F94C84 }
```

If only the background color should be changed can be used:

```
.background{ background-color:#F94C84 }
```

This example shows the color as background, it is applied via the CSS property "background".

To optimize and compress your CSS code, you can use our [online CSS compressor and optimizer](#) based on csstidy. If you want to create a linear or radial gradient as background or border, check our [CSS Gradient Generator](#).



Hey! You found this booklet interesting? Support Converting Colors with the new Membership Option!

The pro membership hides all ads, plus gives you double the colors in the color bucket, and more awesome pro features!

**[Learn more, Memberships starting at \\$2.50/m!](#)**

**Follow me  
on Twitter!**

@ConvertingColor