

Converting Colors

Hex(F9517C)

Have a look what the booklet for
Hex(F9517C) contains.

Hex(F9517C)	3
<i>Conversions</i>	4
<i>Details</i>	6
<i>Harmonies</i>	11
<i>Previews</i>	23
<i>Color Blindness Simulation</i>	26
<i>CSS Examples</i>	29

Color

Hex(F9517C)

Conversions

Conversions Part 1

Format	Color
Hex	F9517C
RGB	249, 81, 124
RGB Percent	98%, 32%, 49%
CMY	0.0235, 0.6824, 0.5137
CMYK	0.00, 0.67, 0.50, 0.02
HSL	345°, 93%, 65%
HSV	345°, 67%, 98%
XYZ	45.6474, 27.4798, 21.9670
YIQ	136.1340, 86.3250, 48.9890

Conversions

Conversions Part 2

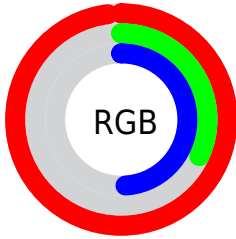
Format	Color
R_{YB}	249, 81, 124
Decimal	16339324
CIE _{Lab}	59.42, 66.49, 12.73
CIE _{LCh}	59, 67.697, 10.836
Yxy	27.4798, 0.4800, 0.2890
Android (android.graphics.Color)	4294529404 (0xFFFF9517C)
YUV	136.1340, -5.9821, 98.9835
Hunter-Lab	52.4212, 63.6975, 11.8495

Details

The Hex color **F9517C** is a light color, and the websafe version is hex **FF6699**. The color can be described as light muted rose. A complement of this color would be **51F9CE**, and the grayscale version is **888888**.

A 20% lighter version of the original color is **FF8CB0**, and **BB004C** is the 20% darker color. If you saturate the color by 10%, you get **F93869**, and if you desaturate by 10%, it is **F96A8F**.

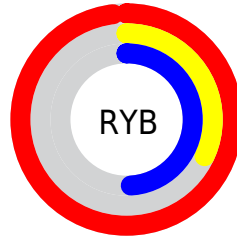
Distribution



Red (98%)

Green (32%)

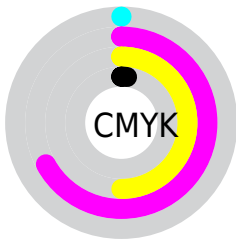
Blue (49%)



Red (98%)

Yellow (32%)

Blue (49%)

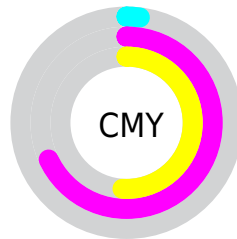


Cyan (0%)

Magenta (67%)

Yellow (50%)

Black (2%)



Cyan (2%)

Magenta (68%)

Yellow (51%)

Brightness & Saturation Gradients

These gradients show how the Hex color F9517C changes by changing the brightness by 10 percent. The first figure shows a shift by +10% for each color and the second figure -10%.

Similar to the brightness gradients but the following saturation gradients show a change of the Hex color F9517C by changing the saturation by 10% instead.

 F9517C

 F9517C

FFFFFF

 DA3163

 FF8CB0

 BB004C

 FFA8CC

 9C0035

 FFC6E8

 7E0021

 FFE3FF

 600009

 440003

 230001

 000000

 F9517C

 F9517C

 F93869

 F96A8F

 F91F57

 F983A1

 F90644

 F99CB4

 F90040

 F9B5C6

 F9CED9

 F9E6EB

 F9FFFE

 F9FFFF

Harmonies

Analogous

The Analogous color harmony consists of three colors that are next to each other on the color wheel.



E65AB8



F9517C



ED6444

Triad

The Triadic color harmony groups three colors that are evenly spaced from another and form a triangle on the color wheel.



F9517C



55A12B



00A0FF

Complementary

The Complementary color scheme is a pair of colors which are on the opposite of each other on the color wheel.



F9517C



51F9CE

Split Complementary

Split-complementary colors differ from the complementary color scheme. The scheme consists of three colors, the original color and two neighbors of the complement color.



00A8DC



F9517C



00A866

Square

The Square scheme is like the rectangle color scheme, but the four colors are evenly spaced on the color wheel.



F9517C



979300



00AAA4



1D8FFF

Rectangle

The Rectangle color scheme consists of four colors that form a rectangle on the color wheel.



F9517C



D87520



00AAA4



00A4F7

Sweetspot

The Sweet Spot groups the original color and five complimentary colors.



F9517C



FFCCD9



CC51F9



806169



000000



808080

Same Dimension

The Same Dimension uses a secret algorithm to generate beautiful new colors.



F9517C



FF3065



F97851



7D7074



BD0030



3D0010

Inverse Universe

The Inverse Universe completely reimagines the original color for something new.



F9517C



FF3065



51D2F9



7D7074



BD0030



3D0010

Previews

White Background



This preview shows how the Hex color F9517C looks on a white background.

Color Contrast Check

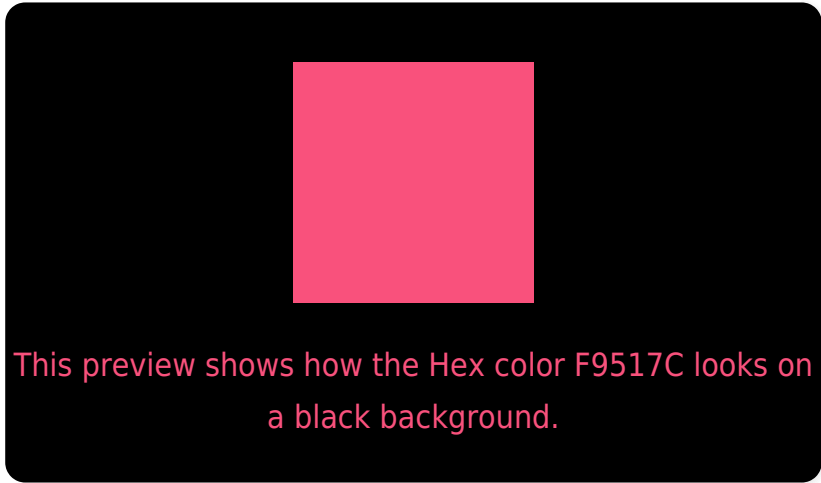
Large Text (above 18pt) WCAG AA ✓ Pass

Any Text WCAG AA × Fail

Large Text (above 18pt) WCAG AAA × Fail

Any Text WCAG AAA × Fail

Black Background



Color Contrast Check

Large Text (above 18pt) WCAG AA ✓ Pass

Any Text WCAG AA ✓ Pass

Large Text (above 18pt) WCAG AAA ✓ Pass

Any Text WCAG AAA × Fail

If you want to check with other color combinations, try the [Color Contrast Checker](#).

Hex F9517C Background



This preview shows how black text looks on a background with the Hex color F9517C.



This preview shows how white text looks on a background with the Hex color F9517C.

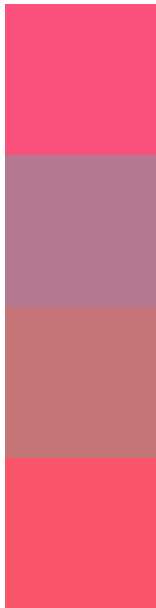
Color Blindness Simulation

Color vision deficiency is a very complex topic, and I could not describe the different causes any better than Wikipedia does, so if you want to learn more, you should check out their [article about color blindness](#).

Dichromacy



Trichromacy



Original Color
F9517C

Protanomaly
B57891

Deuteranomaly
C57577

Tritanomaly
F85568

Monochromacy



Original Color
F9517C

Achromatopsia
888888

Achromatomaly
B17484

CSS Examples

Text

The CSS property to change the color of the text to Hex F9517C is called "color". The color property can be set on classes, ids or directly on the HTML element.

This example shows how text in the color #F9517C looks like.

```
.text, #text, p{  
    color:#F9517C  
}
```

If you want to add a text shadow in that color use the text-shadow property, you can generate a text shadow directly with our [CSS Text Shadow Generator](#).

Here you see how black text with a 4 pixel #F9517C colored shadow looks like.

```
.shadow{ text-shadow: 4px 4px 2px #F9517C
}
```

Border

The CSS property to change the border of an element to Hex F9517C is called "border". The border property can be set on classes, ids or directly on the HTML element.

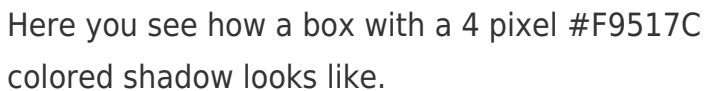
This example shows the color as border, it can be applied via the CSS property "border" or "border-color".

```
.border, #border, table{ border:4px solid
#F9517C }
```

If only the border color should be changed use the property `border-color`.

```
.border{ border-color:#F9517C }
```

If you want to add a box shadow in that color use:



Here you see how a box with a 4 pixel #F9517C colored shadow looks like.

```
.boxshadow{ -moz-box-shadow:4px 4px 4px  
4px #F9517C; -webkit-box-shadow:4px 4px  
4px 4px #F9517C; box-shadow:4px 4px 4px  
4px #F9517C }
```

Background

The CSS property to change the background color of an element to Hex F9517C is called "background". The background property can be set on classes, ids or directly on the HTML element.

```
.background, #background, body{  
background:#F9517C }
```

If only the background color should be changed can be used:

```
.background{ background-color:#F9517C }
```

This example shows the color as background, it is applied via the CSS property "background".

To optimize and compress your CSS code, you can use our [online CSS compressor and optimizer](#) based on csstidy. If you want to create a linear or radial gradient as background or border, check our [CSS Gradient Generator](#).

Hey! You found this booklet interesting? Support Converting Colors with the new Membership Option!

The pro membership hides all ads, plus gives you double the colors in the color bucket, and more awesome pro features!

[Learn more, Memberships starting at \\$2.50/m!](#)

**Follow me
on Twitter!**

@ConvertingColor