

Converting Colors

Hex(F96178)

Have a look what the booklet for
Hex(F96178) contains.

Hex(F96178)	3
<i>Conversions</i>	4
<i>Details</i>	6
<i>Harmonies</i>	11
<i>Previews</i>	23
<i>Color Blindness Simulation</i>	26
<i>CSS Examples</i>	29

Color

Hex(F96178)

Conversions

Conversions Part 1

Format	Color
Hex	F96178
RGB	249, 97, 120
RGB Percent	98%, 38%, 47%
CMY	0.0235, 0.6196, 0.5294
CMYK	0.00, 0.61, 0.52, 0.02
HSL	351°, 93%, 68%
HSV	351°, 61%, 98%
XYZ	46.7318, 30.0452, 21.1056
YIQ	145.0700, 83.2090, 39.3770

Conversions

Conversions Part 2

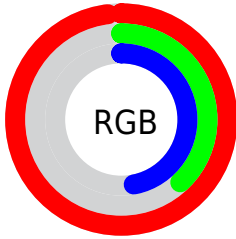
Format	Color
R _Y B	249, 97, 120
Decimal	16343416
CIE Lab	61.69, 59.75, 18.21
CIE LCh	62, 62.462, 16.947
Yxy	30.0452, 0.4774, 0.3070
Android (android.graphics.Color)	4294533496 (0xFFFF96178)
YUV	145.0700, -12.3595, 91.1466
Hunter-Lab	54.8135, 56.2583, 15.5402

Details

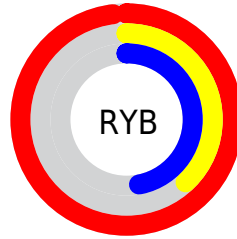
The Hex color **F96178** is a light color, and the websafe version is hex **FF6666**. A complement of this color would be **61F9E2**, and the grayscale version is **919191**.

A 20% lighter version of the original color is **FF99AC**, and **BB2448** is the 20% darker color. If you saturate the color by 10%, you get **F94863**, and if you desaturate by 10%, it is **F97A8D**.

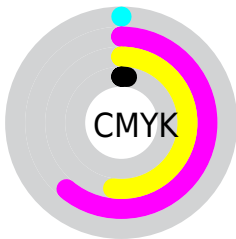
Distribution



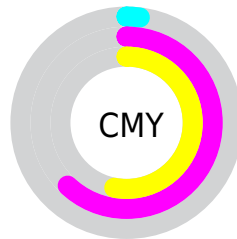
- Red (98%)
- Green (38%)
- Blue (47%)



- Red (98%)
- Yellow (38%)
- Blue (47%)



- Cyan (0%)
- Magenta (61%)
- Yellow (52%)
- Black (2%)



- Cyan (2%)
- Magenta (62%)
- Yellow (53%)

Brightness & Saturation Gradients

These gradients show how the Hex color F96178 changes by changing the brightness by 10 percent. The first figure shows a shift by +10% for each color and the second figure -10%.

Similar to the brightness gradients but the following saturation gradients show a change of the Hex color F96178 by changing the saturation by 10% instead.

 F96178

 F96178

FFFFFF

 DA445F

 FF99AC

 BB2448

 FFB6C7

 9D0032

 FFD3E3

 7F001D

 FFF0FF

 610004

 450002

 260001

 000000

 F96178

 F96178

 F94863

 F97A8D

 F92F4E

 F993A2

 F91639

 F9ACB7

 F90026

 F9C5CD

 F9DDE2

 F9F6F7

 F9FFFF

Harmonies

Analogous

The Analogous color harmony consists of three colors that are next to each other on the color wheel.



ED63B0



F96178



E97346

Triad

The Triadic color harmony groups three colors that are evenly spaced from another and form a triangle on the color wheel.



F96178



51A844



00A2FF

Complementary

The Complementary color scheme is a pair of colors which are on the opposite of each other on the color wheel.



F96178



61F9E2

Split Complementary

Split-complementary colors differ from the complementary color scheme. The scheme consists of three colors, the original color and two neighbors of the complement color.



00ACE5



F96178



00AE7A

Square

The Square scheme is like the rectangle color scheme, but the four colors are evenly spaced on the color wheel.



F96178



939C1B



00AFB4



6590FF

Rectangle

The Rectangle color scheme consists of four colors that form a rectangle on the color wheel.



F96178



D3822A



00AFB4



00A6FB

Sweetspot

The Sweet Spot groups the original color and five complimentary colors.



F96178



FFD1D8



E061F9



806368



000000



808080

Same Dimension

The Same Dimension uses a secret algorithm to generate beautiful new colors.



F96178



FF4561



F99461



7D7072



BD001D



3D0009

Inverse Universe

The Inverse Universe completely reimagines the original color for something new.



F96178



FF4561



61C6F9



7D7072



BD001D



3D0009

Previews

White Background



This preview shows how the Hex color F96178 looks on a white background.

Color Contrast Check

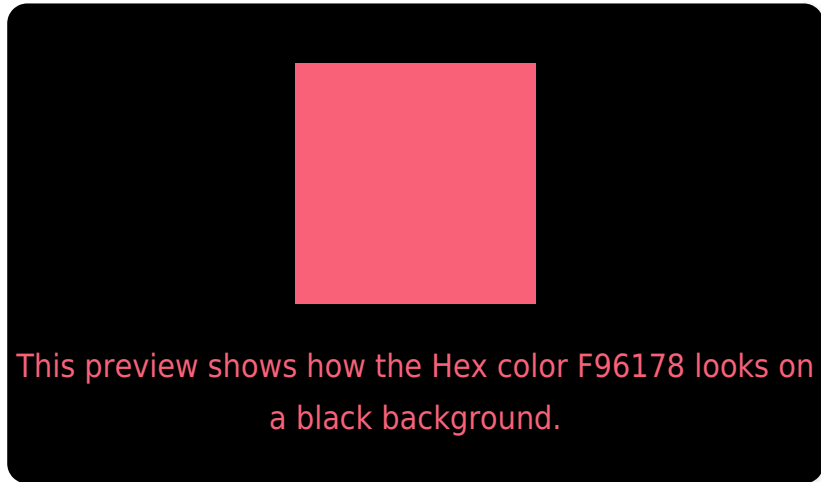
Large Text (above 18pt) WCAG AA ✓ Pass

Any Text WCAG AA ✗ Fail

Large Text (above 18pt) WCAG AAA ✗ Fail

Any Text WCAG AAA ✗ Fail

Black Background



Color Contrast Check

Large Text (above 18pt) WCAG AA ✓ Pass

Any Text WCAG AA ✓ Pass

Large Text (above 18pt) WCAG AAA ✓ Pass

Any Text WCAG AAA ✓ Pass

If you want to check with other color combinations, try the [Color Contrast Checker](#).

Hex F96178 Background



This preview shows how black text looks on a background with the Hex color F96178.

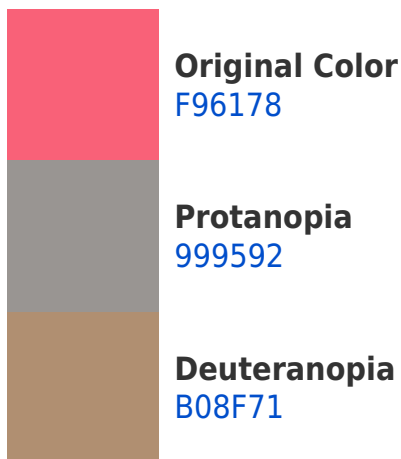


This preview shows how white text looks on a background with the Hex color F96178.

Color Blindness Simulation

Color vision deficiency is a very complex topic, and I could not describe the different causes any better than Wikipedia does, so if you want to learn more, you should check out their [article about color blindness](#).

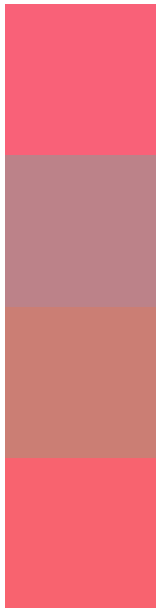
Dichromacy





Tritanopia
F8646A

Trichromacy



Original Color
F96178

Protanomaly
BC8289

Deuteranomaly
CB7E74

Tritanomaly
F8636F

Monochromacy



Original Color
F96178

Achromatopsia
919191

Achromatomaly
B78088

CSS Examples

Text

The CSS property to change the color of the text to Hex F96178 is called "color". The color property can be set on classes, ids or directly on the HTML element.

This example shows how text in the color #F96178 looks like.

```
.text, #text, p{  
    color:#F96178  
}
```

If you want to add a text shadow in that color use the text-shadow property, you can generate a text shadow directly with our [CSS Text Shadow Generator](#).

Here you see how black text with a 4 pixel #F96178 colored shadow looks like.

```
.shadow{ text-shadow: 4px 4px 2px #F96178
}
```

Border

The CSS property to change the border of an element to Hex F96178 is called "border". The border property can be set on classes, ids or directly on the HTML element.

This example shows the color as border, it can be applied via the CSS property "border" or "border-color".

```
.border, #border, table{ border:4px solid
#F96178 }
```

If only the border color should be changed use the property border-color.

```
.border{ border-color:#F96178 }
```

If you want to add a box shadow in that color use:

Here you see how a box with a 4 pixel #F96178 colored shadow looks like.

```
.boxshadow{ -moz-box-shadow:4px 4px 4px  
4px #F96178; -webkit-box-shadow:4px 4px  
4px 4px #F96178; box-shadow:4px 4px 4px  
4px #F96178 }
```

Background

The CSS property to change the background color of an element to Hex F96178 is called "background". The background property can be set on classes, ids or directly on the HTML element.

```
.background, #background, body{  
background:#F96178 }
```

If only the background color should be changed can be used:

```
.background{ background-color:#F96178 }
```

This example shows the color as background, it is applied via the CSS property "background".

To optimize and compress your CSS code, you can use our [online CSS compressor and optimizer](#) based on csstidy. If you want to create a linear or radial gradient as background or border, check our [CSS Gradient Generator](#).

Hey! You found this booklet interesting? Support Converting Colors with the new Membership Option!

The pro membership hides all ads, plus gives you double the colors in the color bucket, and more awesome pro features!

[Learn more, Memberships starting at \\$2.50/m!](#)

**Follow me
on Twitter!**

@ConvertingColor