

Converting Colors

Hex(F96F82)

Have a look what the booklet for
Hex(F96F82) contains.

Hex(F96F82)	3
<i>Conversions</i>	4
<i>Details</i>	6
<i>Harmonies</i>	11
<i>Previews</i>	23
<i>Color Blindness Simulation</i>	26
<i>CSS Examples</i>	29

Color

Hex(F96F82)

Conversions

Conversions Part 1

Format	Color
Hex	F96F82
RGB	249, 111, 130
RGB Percent	98%, 44%, 51%
CMY	0.0235, 0.5647, 0.4902
CMYK	0.00, 0.55, 0.48, 0.02
HSL	352°, 92%, 71%
HSV	352°, 55%, 98%
XYZ	48.7806, 33.1203, 24.9409
YIQ	154.4280, 76.1490, 35.1650

Conversions

Conversions Part 2

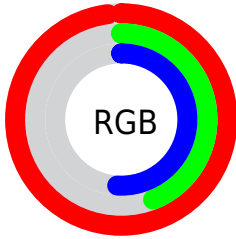
Format	Color
R_{YB}	249, 111, 130
Decimal	16347010
CIE _{Lab}	64.26, 54.38, 16.00
CIE _{LCh}	64, 56.685, 16.400
Yxy	33.1203, 0.4566, 0.3100
Android (android.graphics.Color)	4294537090 (0xFFFF96F82)
YUV	154.4280, -12.0430, 82.9396
Hunter-Lab	57.5503, 50.5868, 14.5903

Details

The Hex color **F96F82** is a light color, and the websafe version is hex **FF6666**. A complement of this color would be **6FF9E6**, and the grayscale version is **9A9A9A**.

A 20% lighter version of the original color is **FFA7B7**, and **BC3751** is the 20% darker color. If you saturate the color by 10%, you get **F9566D**, and if you desaturate by 10%, it is **F98897**.

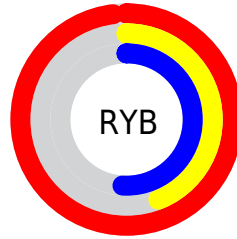
Distribution



Red (98%)

Green (44%)

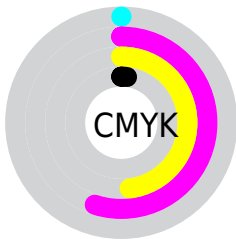
Blue (51%)



Red (98%)

Yellow (44%)

Blue (51%)

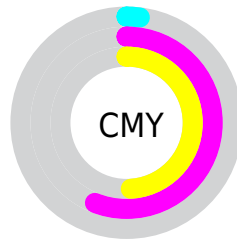


Cyan (0%)

Magenta (55%)

Yellow (48%)

Black (2%)



Cyan (2%)

Magenta (56%)

Yellow (49%)

Brightness & Saturation Gradients

These gradients show how the Hex color F96F82 changes by changing the brightness by 10 percent. The first figure shows a shift by +10% for each color and the second figure -10%.

Similar to the brightness gradients but the following saturation gradients show a change of the Hex color F96F82 by changing the saturation by 10% instead.

 F96F82

 F96F82

FFFFFF

 DA5369

 FFA7B7

 BC3751

 FFC3D2

 9E163A

 FFE0EF

 800025

 FFFDFF

 630011

 470001

 2A0001

 000000

 F96F82

 F96F82

 F9566D

 F98897

 F93D57

 F9A1AD

 F92442

 F9BAC2

 F90B2C

 F9D3D8

 F90022

 F9EBED

 F9FFFF

Harmonies

Analogous

The Analogous color harmony consists of three colors that are next to each other on the color wheel.



ED71B5



F96F82



EC7D54

Triad

The Triadic color harmony groups three colors that are evenly spaced from another and form a triangle on the color wheel.



F96F82



62AD52



00A8FE

Complementary

The Complementary color scheme is a pair of colors which are on the opposite of each other on the color wheel.



F96F82



6FF9E6

Split Complementary

Split-complementary colors differ from the complementary color scheme. The scheme consists of three colors, the original color and two neighbors of the complement color.



00B1E4



F96F82



00B382

Square

The Square scheme is like the rectangle color scheme, but the four colors are evenly spaced on the color wheel.



F96F82



9DA233



00B5B7



7498FD

Rectangle

The Rectangle color scheme consists of four colors that form a rectangle on the color wheel.



F96F82



D78A3D



00B5B7



00ACF8

Sweetspot

The Sweet Spot groups the original color and five complimentary colors.



F96F82



FFD4DA



E46FF9



80666A



000000



808080

Same Dimension

The Same Dimension uses a secret algorithm to generate beautiful new colors.



F96F82



FF546C



F99F6F



7D7072



BD001A



3D0008

Inverse Universe

The Inverse Universe completely reimagines the original color for something new.



F96F82



FF546C



6FC9F9



7D7072



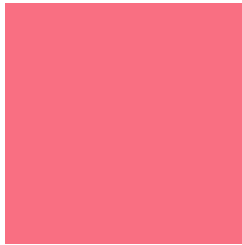
BD001A



3D0008

Previews

White Background



This preview shows how the Hex color F96F82 looks on a white background.

Color Contrast Check

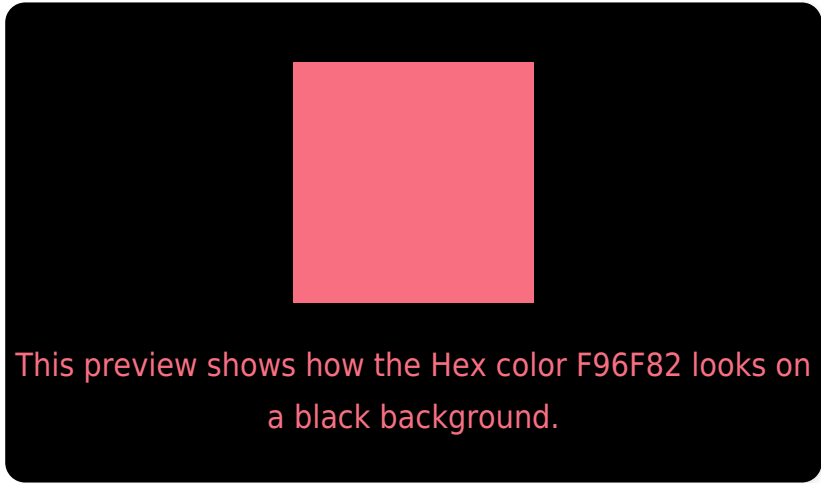
Large Text (above 18pt) WCAG AA × Fail

Any Text WCAG AA × Fail

Large Text (above 18pt) WCAG AAA × Fail

Any Text WCAG AAA × Fail

Black Background



Color Contrast Check

Large Text (above 18pt) WCAG AA ✓ Pass

Any Text WCAG AA ✓ Pass

Large Text (above 18pt) WCAG AAA ✓ Pass

Any Text WCAG AAA ✓ Pass

If you want to check with other color combinations, try the [Color Contrast Checker](#).

Hex F96F82 Background



This preview shows how black text looks on a background with the Hex color F96F82.

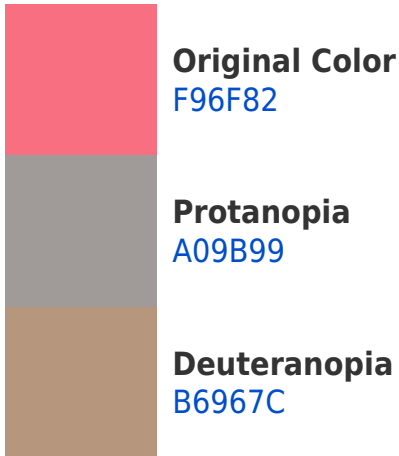


This preview shows how white text looks on a background with the Hex color F96F82.

Color Blindness Simulation

Color vision deficiency is a very complex topic, and I could not describe the different causes any better than Wikipedia does, so if you want to learn more, you should check out their [article about color blindness](#).

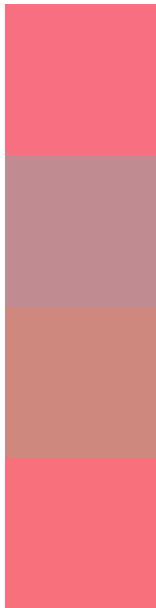
Dichromacy





Tritanopia
F87178

Trichromacy



Original Color
F96F82

Protanomaly
C08B91

Deuteranomaly
CE887E

Tritanomaly
F8707C

Monochromacy



Original Color
F96F82

Achromatopsia
9A9A9A

Achromatomaly
BD8A91

CSS Examples

Text

The CSS property to change the color of the text to Hex F96F82 is called "color". The color property can be set on classes, ids or directly on the HTML element.

This example shows how text in the color #F96F82 looks like.

```
.text, #text, p{  
    color:#F96F82  
}
```

If you want to add a text shadow in that color use the text-shadow property, you can generate a text shadow directly with our [CSS Text Shadow Generator](#).

Here you see how black text with a 4 pixel #F96F82 colored shadow looks like.

```
.shadow{ text-shadow: 4px 4px 2px #F96F82
}
```

Border

The CSS property to change the border of an element to Hex F96F82 is called "border". The border property can be set on classes, ids or directly on the HTML element.

This example shows the color as border, it can be applied via the CSS property "border" or "border-color".

```
.border, #border, table{ border:4px solid
#F96F82 }
```

If only the border color should be changed use the property `border-color`.

```
.border{ border-color:#F96F82 }
```

If you want to add a box shadow in that color use:

Here you see how a box with a 4 pixel #F96F82 colored shadow looks like.

```
.boxshadow{ -moz-box-shadow:4px 4px 4px  
4px #F96F82; -webkit-box-shadow:4px 4px  
4px 4px #F96F82; box-shadow:4px 4px 4px  
4px #F96F82 }
```

Background

The CSS property to change the background color of an element to Hex F96F82 is called "background". The background property can be set on classes, ids or directly on the HTML element.

```
.background, #background, body{  
background:#F96F82 }
```

If only the background color should be changed can be used:

```
.background{ background-color:#F96F82 }
```

This example shows the color as background, it is applied via the CSS property "background".

To optimize and compress your CSS code, you can use our [online CSS compressor and optimizer](#) based on csstidy. If you want to create a linear or radial gradient as background or border, check our [CSS Gradient Generator](#).

Hey! You found this booklet interesting? Support Converting Colors with the new Membership Option!

The pro membership hides all ads, plus gives you double the colors in the color bucket, and more awesome pro features!

[Learn more, Memberships starting at \\$2.50/m!](#)

**Follow me
on Twitter!**

@ConvertingColor