

Converting Colors

Hex(F97E72)

Have a look what the booklet for
Hex(F97E72) contains.

Hex(F97E72)	3
<i>Conversions</i>	4
<i>Details</i>	6
<i>Harmonies</i>	11
<i>Previews</i>	23
<i>Color Blindness Simulation</i>	26
<i>CSS Examples</i>	29

Color

Hex(F97E72)

Conversions

Conversions Part 1

Format	Color
Hex	F97E72
RGB	249, 126, 114
RGB Percent	98%, 49%, 45%
CMY	0.0235, 0.5059, 0.5529
CMYK	0.00, 0.49, 0.54, 0.02
HSL	5°, 92%, 71%
HSV	5°, 54%, 98%
XYZ	49.5650, 36.2764, 20.3093
YIQ	161.4090, 77.1600, 22.3440

Conversions

Conversions Part 2

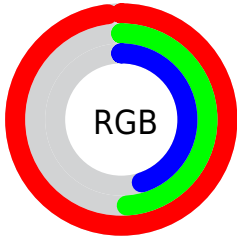
Format	Color
R _Y B	249, 127, 114
Decimal	16350834
CIE Lab	66.73, 45.86, 28.37
CIE LCh	67, 53.921, 31.741
Yxy	36.2764, 0.4669, 0.3417
Android (android.graphics.Color)	4294540914 (0xFFFF97E72)
YUV	161.4090, -23.3726, 76.8173
Hunter-Lab	60.2299, 41.4910, 22.1686

Details

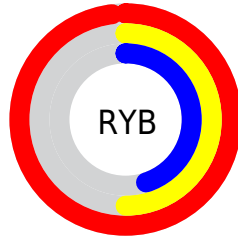
The Hex color **F97E72** is a light color, and the websafe version is hex **FF6666**. A complement of this color would be **72EDF9**, and the grayscale version is **A2A2A2**.

A 20% lighter version of the original color is **FFB5A6**, and **BC4942** is the 20% darker color. If you saturate the color by 10%, you get **F96759**, and if you desaturate by 10%, it is **F9958B**.

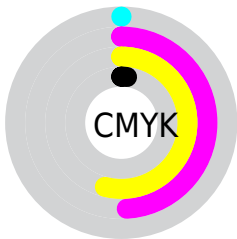
Distribution



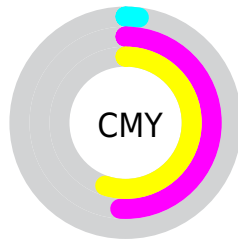
- Red (98%)
- Green (49%)
- Blue (45%)



- Red (98%)
- Yellow (50%)
- Blue (45%)



- Cyan (0%)
- Magenta (49%)
- Yellow (54%)
- Black (2%)



- Cyan (2%)
- Magenta (51%)
- Yellow (55%)

Brightness & Saturation Gradients

These gradients show how the Hex color F97E72 changes by changing the brightness by 10 percent. The first figure shows a shift by +10% for each color and the second figure -10%.

Similar to the brightness gradients but the following saturation gradients show a change of the Hex color F97E72 by changing the saturation by 10% instead.

 F97E72

 F97E72

FFFFFF

 DA6359

 FF5A6

 BC4942

 FFD1C1

 9E2E2C

 FFEEDD

 800F17

 FFFFFA

 640000

 460000

 2C0001

 000000

 F97E72

 F97E72

 F96759

 F9958B

 F95140

 F9ABA4

 F93A27

 F9C2BD

 F9230E

 F9D9D6

 F91600

 F9EFEF

 F9FFFF

Harmonies

Analogous

The Analogous color harmony consists of three colors that are next to each other on the color wheel.



FA78A1



F97E72



E28F4D

Triad

The Triadic color harmony groups three colors that are evenly spaced from another and form a triangle on the color wheel.



F97E72



46B772



45A7FF

Complementary

The Complementary color scheme is a pair of colors which are on the opposite of each other on the color wheel.



F97E72



72EDF9

Split Complementary

Split-complementary colors differ from the complementary color scheme. The scheme consists of three colors, the original color and two neighbors of the complement color.



00B3F7



F9E72



00BAA4

Square

The Square scheme is like the rectangle color scheme, but the four colors are evenly spaced on the color wheel.



F97E72



8AAE4C



00B9D4



A894F5

Rectangle

The Rectangle color scheme consists of four colors that form a rectangle on the color wheel.



F97E72



C99B3E



00B9D4



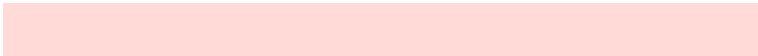
00ACFF

Sweetspot

The Sweet Spot groups the original color and five complimentary colors.



F97E72



FFDAD6



F972EE



806967



000000



808080

Same Dimension

The Same Dimension uses a secret algorithm to generate beautiful new colors.



F97E72



FF6859



F9C172



7D7270



BD1100



3D0500

Inverse Universe

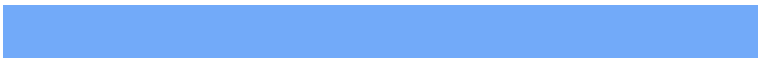
The Inverse Universe completely reimagines the original color for something new.



72EDF9



59F0FF



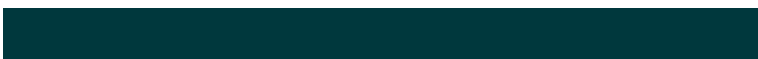
72AAF9



707C7D



00ACBD



00383D

Previews

White Background



This preview shows how the Hex color F97E72 looks on a white background.

Color Contrast Check

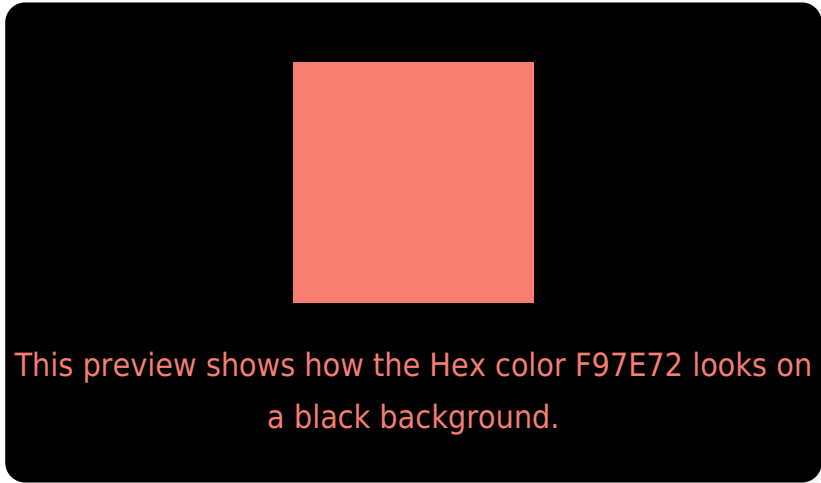
Large Text (above 18pt) WCAG AA × Fail

Any Text WCAG AA × Fail

Large Text (above 18pt) WCAG AAA × Fail

Any Text WCAG AAA × Fail

Black Background



Color Contrast Check

Large Text (above 18pt) WCAG AA ✓ Pass

Any Text WCAG AA ✓ Pass

Large Text (above 18pt) WCAG AAA ✓ Pass

Any Text WCAG AAA ✓ Pass

If you want to check with other color combinations, try the [Color Contrast Checker](#).

Hex F97E72 Background



This preview shows how black text looks on a background with the Hex color F97E72.

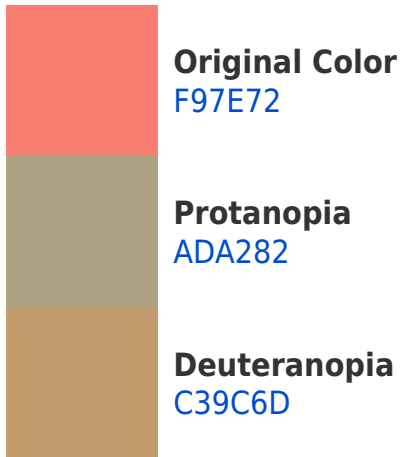


This preview shows how white text looks on a background with the Hex color F97E72.

Color Blindness Simulation

Color vision deficiency is a very complex topic, and I could not describe the different causes any better than Wikipedia does, so if you want to learn more, you should check out their [article about color blindness](#).

Dichromacy



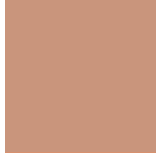


Tritanopia
FA7B84

Trichromacy



Original Color
F9E72



Protanomaly
C9957C



Deuteranomaly
D7916F



Tritanomaly
FA7C7D

Monochromacy



Original Color
F9E72



Achromatopsia
A1A1A1



Achromatomaly
C19490

CSS Examples

Text

The CSS property to change the color of the text to Hex F97E72 is called "color". The color property can be set on classes, ids or directly on the HTML element.

This example shows how text in the color #F97E72 looks like.

```
.text, #text, p{  
    color:#F97E72  
}
```

If you want to add a text shadow in that color use the text-shadow property, you can generate a text shadow directly with our [CSS Text Shadow Generator](#).

Here you see how black text with a 4 pixel #F97E72 colored shadow looks like.

```
.shadow{ text-shadow: 4px 4px 2px #F97E72
}
```

Border

The CSS property to change the border of an element to Hex F97E72 is called "border". The border property can be set on classes, ids or directly on the HTML element.

This example shows the color as border, it can be applied via the CSS property "border" or "border-color".

```
.border, #border, table{ border:4px solid
#F97E72 }
```

If only the border color should be changed use the property `border-color`.

```
.border{ border-color:#F97E72 }
```

If you want to add a box shadow in that color use:

Here you see how a box with a 4 pixel #F97E72 colored shadow looks like.

```
.boxshadow{ -moz-box-shadow:4px 4px 4px  
4px #F97E72; -webkit-box-shadow:4px 4px  
4px 4px #F97E72; box-shadow:4px 4px 4px  
4px #F97E72 }
```

Background

The CSS property to change the background color of an element to Hex F97E72 is called "background". The background property can be set on classes, ids or directly on the HTML element.

```
.background, #background, body{  
background:#F97E72 }
```

If only the background color should be changed can be used:

```
.background{ background-color:#F97E72 }
```

This example shows the color as background, it is applied via the CSS property "background".

To optimize and compress your CSS code, you can use our [online CSS compressor and optimizer](#) based on csstidy. If you want to create a linear or radial gradient as background or border, check our [CSS Gradient Generator](#).

Hey! You found this booklet interesting? Support Converting Colors with the new Membership Option!

The pro membership hides all ads, plus gives you double the colors in the color bucket, and more awesome pro features!

[Learn more, Memberships starting at \\$2.50/m!](#)

**Follow me
on Twitter!**

@ConvertingColor