

# Converting Colors

Hex(F98175)

Have a look what the booklet for  
Hex(F98175) contains.

<b>Hex(F98175)</b> .....	3
<b><i>Conversions</i></b> .....	4
<b><i>Details</i></b> .....	6
<b><i>Harmonies</i></b> .....	11
<b><i>Previews</i></b> .....	23
<b><i>Color Blindness Simulation</i></b> .....	26
<b><i>CSS Examples</i></b> .....	29

# **Color**

**Hex(F98175)**

# Conversions

## Conversions Part 1

Format	Color
Hex	F98175
RGB	249, 129, 117
RGB Percent	98%, 51%, 46%
CMY	0.0235, 0.4941, 0.5412
CMYK	0.00, 0.48, 0.53, 0.02
HSL	5°, 92%, 72%
HSV	5°, 53%, 98%
XYZ	50.1281, 37.1246, 21.3533
YIQ	163.5120, 75.3720, 21.7080

# Conversions

## Conversions Part 2

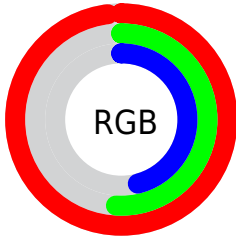
<b>Format</b>	<b>Color</b>
<b>R<sub>YB</sub></b>	249, 130, 117
Decimal	16351605
CIE <sub>Lab</sub>	67.37, 44.62, 27.54
CIE <sub>LCh</sub>	67, 52.434, 31.689
Yxy	37.1246, 0.4616, 0.3418
Android (android.graphics.Color)	4294541685 (0xFFFF98175)
YUV	163.5120, -22.9304, 74.9730
Hunter-Lab	60.9300, 40.2274, 21.8724

# Details

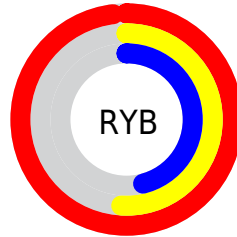
The Hex color **F98175** is a light color, and the websafe version is hex **FF9999**. A complement of this color would be **75EDF9**, and the grayscale version is **A4A4A4**.

A 20% lighter version of the original color is **FFB8A9**, and **BC4C45** is the 20% darker color. If you saturate the color by 10%, you get **F96A5C**, and if you desaturate by 10%, it is **F9988E**.

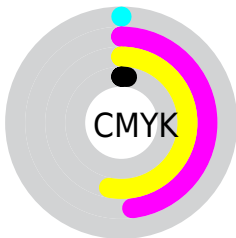
# Distribution



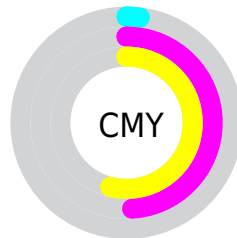
- Red (98%)
- Green (51%)
- Blue (46%)



- Red (98%)
- Yellow (51%)
- Blue (46%)



- Cyan (0%)
- Magenta (48%)
- Yellow (53%)
- Black (2%)



- Cyan (2%)
- Magenta (49%)
- Yellow (54%)

# Brightness & Saturation Gradients

These gradients show how the Hex color F98175 changes by changing the brightness by 10 percent. The first figure shows a shift by +10% for each color and the second figure -10%.

Similar to the brightness gradients but the following saturation gradients show a change of the Hex color F98175 by changing the saturation by 10% instead.



 F98175

 F98175

FFFFFF

 DA665C

 FFB8A9

 BC4C45

 FFD4C4

 9E322E

 FFF1E0

 811419

FFFFFFD

 640000

 470000

 2D0001

 000000

 F98175

 F98175

 F96A5C

 F9988E

 F95443

 F9AEA7

 F93D2A

 F9C5C0

 F92611

 F9DCD9

 F91700

 F9F2F2

 F9FFFF

# Harmonies

## Analogous

The Analogous color harmony consists of three colors that are next to each other on the color wheel.



FA7BA3



F98175



E29151

# Triad

The Triadic color harmony groups three colors that are evenly spaced from another and form a triangle on the color wheel.



F98175



4CB875



4EA8FF

# Complementary

The Complementary color scheme is a pair of colors which are on the opposite of each other on the color wheel.



F98175



75EDF9

# Split Complementary

Split-complementary colors differ from the complementary color scheme. The scheme consists of three colors, the original color and two neighbors of the complement color.



00B5F6



F98175



00BCA5

# Square

The Square scheme is like the rectangle color scheme, but the four colors are evenly spaced on the color wheel.



F98175



8CB050



00BBD4



AA97F5

# Rectangle

The Rectangle color scheme consists of four colors that form a rectangle on the color wheel.



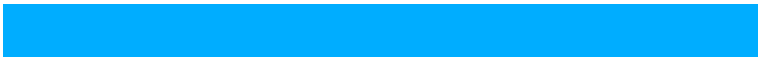
F98175



CB9D43



00BBD4



00ADFF



# Sweetspot

The Sweet Spot groups the original color and five complimentary colors.



F98175



FFDAD6



F975EE



806967



000000



808080



# Same Dimension

The Same Dimension uses a secret algorithm to generate beautiful new colors.



F98175



FF6B5C



F9C275



7D7270



BD1100



3D0600



# Inverse Universe

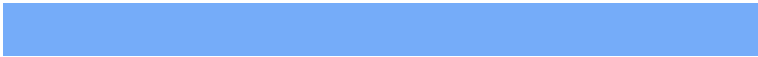
The Inverse Universe completely reimagines the original color for something new.



75EDF9



5CF0FF



75ACF9



707C7D



00ACBD



00383D



# Previews

## White Background



This preview shows how the Hex color F98175 looks on a white background.

## Color Contrast Check

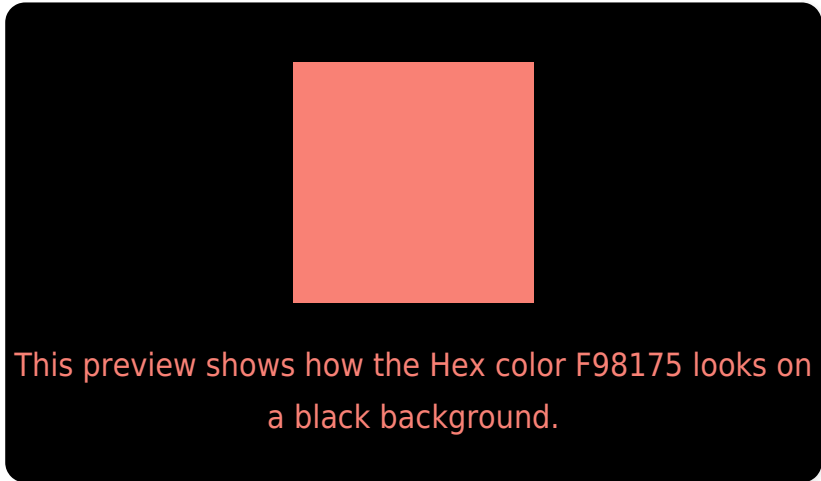
Large Text (above 18pt) WCAG AA × Fail

Any Text WCAG AA × Fail

Large Text (above 18pt) WCAG AAA × Fail

Any Text WCAG AAA × Fail

# Black Background



## Color Contrast Check

Large Text (above 18pt) WCAG AA ✓ Pass

Any Text WCAG AA ✓ Pass

Large Text (above 18pt) WCAG AAA ✓ Pass

Any Text WCAG AAA ✓ Pass

If you want to check with other color combinations, try the [Color Contrast Checker](#).



## Hex F98175 Background



This preview shows how black text looks on a background with the Hex color F98175.

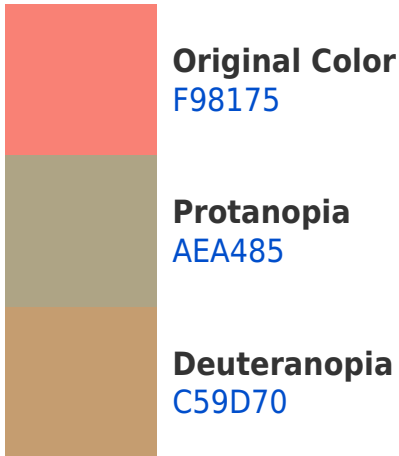


This preview shows how white text looks on a background with the Hex color F98175.

# Color Blindness Simulation

Color vision deficiency is a very complex topic, and I could not describe the different causes any better than Wikipedia does, so if you want to learn more, you should check out their [article about color blindness](#).

## Dichromacy



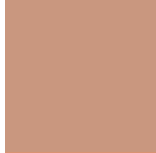


**Tritanopia**  
FA7E87

# Trichromacy



**Original Color**  
F98175



**Protanomaly**  
C9977F



**Deuteranomaly**  
D89372

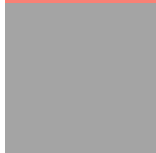


**Tritanomaly**  
FA7F80

# Monochromacy



**Original Color**  
F98175



**Achromatopsia**  
A4A4A4



**Achromatomaly**  
C39793

# CSS Examples

## Text

The CSS property to change the color of the text to Hex F98175 is called "color". The color property can be set on classes, ids or directly on the HTML element.

This example shows how text in the color #F98175 looks like.

```
.text, #text, p{  
    color:#F98175  
}
```

If you want to add a text shadow in that color use the text-shadow property, you can generate a text shadow directly with our [CSS Text Shadow Generator](#).

Here you see how black text with a 4 pixel #F98175 colored shadow looks like.

```
.shadow{ text-shadow: 4px 4px 2px #F98175
}
```

## Border

The CSS property to change the border of an element to Hex F98175 is called "border". The border property can be set on classes, ids or directly on the HTML element.

This example shows the color as border, it can be applied via the CSS property "border" or "border-color".

```
.border, #border, table{ border:4px solid
#F98175 }
```

If only the border color should be changed use the property `border-color`.

```
.border{ border-color:#F98175 }
```

If you want to add a box shadow in that color use:

Here you see how a box with a 4 pixel #F98175 colored shadow looks like.

```
.boxshadow{ -moz-box-shadow:4px 4px 4px  
4px #F98175; -webkit-box-shadow:4px 4px  
4px 4px #F98175; box-shadow:4px 4px 4px  
4px #F98175 }
```

# Background

The CSS property to change the background color of an element to Hex F98175 is called "background". The background property can be set on classes, ids or directly on the HTML element.

```
.background, #background, body{  
background:#F98175 }
```

If only the background color should be changed can be used:

```
.background{ background-color:#F98175 }
```

This example shows the color as background, it is applied via the CSS property "background".

To optimize and compress your CSS code, you can use our [online CSS compressor and optimizer](#) based on csstidy. If you want to create a linear or radial gradient as background or border, check our [CSS Gradient Generator](#).



Hey! You found this booklet interesting? Support Converting Colors with the new Membership Option!

The pro membership hides all ads, plus gives you double the colors in the color bucket, and more awesome pro features!

**[Learn more, Memberships starting at \\$2.50/m!](#)**

**Follow me  
on Twitter!**

@ConvertingColor