

Converting Colors

Hex(F9BFE7)

Have a look what the booklet for
Hex(F9BFE7) contains.

Hex(F9BFE7)	3
<i>Conversions</i>	4
<i>Details</i>	6
<i>Harmonies</i>	11
<i>Previews</i>	23
<i>Color Blindness Simulation</i>	26
<i>CSS Examples</i>	29

Color

Hex(F9BFE7)

Conversions

Conversions Part 1

Format	Color
Hex	F9BFE7
RGB	249, 191, 231
RGB Percent	98%, 75%, 91%
CMY	0.0235, 0.2510, 0.0941
CMYK	0.00, 0.23, 0.07, 0.02
HSL	319°, 83%, 86%
HSV	319°, 23%, 98%
XYZ	72.1215, 63.1709, 83.9933
YIQ	212.9020, 21.7280, 24.7360

Conversions

Conversions Part 2

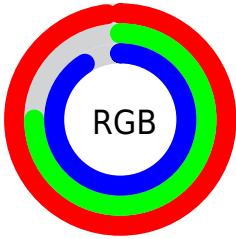
Format	Color
R _Y B	249, 191, 231
Decimal	16367591
CIE Lab	83.53, 27.03, -11.82
CIE LCh	84, 29.502, 336.386
Yxy	63.1709, 0.3289, 0.2881
Android (android.graphics.Color)	4294557671 (0xFFFF9BFE7)
YUV	212.9020, 8.9223, 31.6579
Hunter-Lab	79.4801, 22.8836, -7.0206

Details

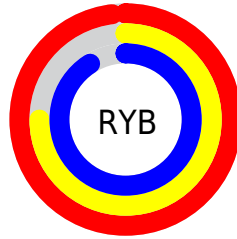
The Hex color **F9BFE7** is a light color, and the websafe version is hex **FFCCFF**. A complement of this color would be **BFF9D1**, and the grayscale version is **D5D5D5**.

A 20% lighter version of the original color is **FFF8FF**, and **C089AF** is the 20% darker color. If you saturate the color by 10%, you get **F9A6DF**, and if you desaturate by 10%, it is **F9D8EF**.

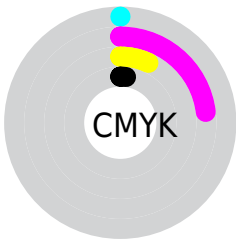
Distribution



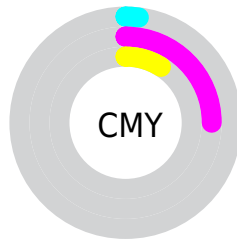
- Red (98%)
- Green (75%)
- Blue (91%)



- Red (98%)
- Yellow (75%)
- Blue (91%)



- Cyan (0%)
- Magenta (23%)
- Yellow (7%)
- Black (2%)



- Cyan (2%)
- Magenta (25%)
- Yellow (9%)

Brightness & Saturation Gradients

These gradients show how the Hex color F9BFE7 changes by changing the brightness by 10 percent. The first figure shows a shift by +10% for each color and the second figure -10%.

Similar to the brightness gradients but the following saturation gradients show a change of the Hex color F9BFE7 by changing the saturation by 10% instead.

 F9BFE7

FFFFFF

 FFF8FF

 F9BFE7

 DCA4CB

 C089AF

 A46F95

 8A567B

 703E62

 56274A

 3E1033

 28001E

 000002

 F9BFE7

 F9BFE7

 F9A6DF

 F9D8EF

 F98DD8

 F9F1F6

 F974D0

 F9FFFE

 F95BC8

 F9FFFF

 F943C0

 F92AB9

 F911B1

 F900AC

Harmonies

Analogous

The Analogous color harmony consists of three colors that are next to each other on the color wheel.



DCC7FD



F9BFE7



FFBCCB

Triad

The Triadic color harmony groups three colors that are evenly spaced from another and form a triangle on the color wheel.



F9BFE7



DFD099



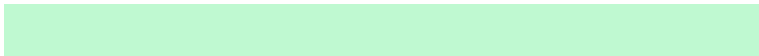
7EDEF0

Complementary

The Complementary color scheme is a pair of colors which are on the opposite of each other on the color wheel.



F9BFE7



BFF9D1

Split Complementary

Split-complementary colors differ from the complementary color scheme. The scheme consists of three colors, the original color and two neighbors of the complement color.



86E0D5



F9BFE7



C0D8A3

Square

The Square scheme is like the rectangle color scheme, but the four colors are evenly spaced on the color wheel.



F9BFE7



F8C79E



A0DEB9



92D9FF

Rectangle

The Rectangle color scheme consists of four colors that form a rectangle on the color wheel.



F9BFE7



FFBDB9



A0DEB9



7EDFE8

Sweetspot

The Sweet Spot groups the original color and five complimentary colors.



F9BFE7



FFEDF9



D0BFF9



80757C



000000



808080

Same Dimension

The Same Dimension uses a secret algorithm to generate beautiful new colors.



F9BFE7



FFB8E9



F9BFCB



7D7079



BD0082



3D002A

Inverse Universe

The Inverse Universe completely reimagines the original color for something new.



F9BFE7



FFB8E9



BFF9ED



7D7079



BD0082



3D002A

Previews

White Background



This preview shows how the Hex color F9BFE7 looks on a white background.

Color Contrast Check

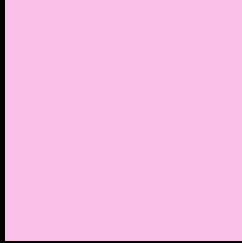
Large Text (above 18pt) WCAG AA × Fail

Any Text WCAG AA × Fail

Large Text (above 18pt) WCAG AAA × Fail

Any Text WCAG AAA × Fail

Black Background



This preview shows how the Hex color F9BFE7 looks on a black background.

Color Contrast Check

Large Text (above 18pt) WCAG AA ✓ Pass

Any Text WCAG AA ✓ Pass

Large Text (above 18pt) WCAG AAA ✓ Pass

Any Text WCAG AAA ✓ Pass

If you want to check with other color combinations, try the [Color Contrast Checker](#).

Hex F9BFE7 Background



This preview shows how black text looks on a background with the Hex color F9BFE7.



This preview shows how white text looks on a background with the Hex color F9BFE7.

Color Blindness Simulation

Color vision deficiency is a very complex topic, and I could not describe the different causes any better than Wikipedia does, so if you want to learn more, you should check out their [article about color blindness](#).

Dichromacy



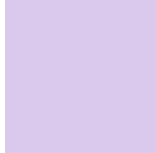


Tritanopia
F6C3D2

Trichromacy



Original Color
F9BFE7



Protanomaly
DBC9ED



Deuteranomaly
E6C7E6

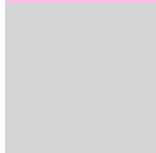


Tritanomaly
F7C2DA

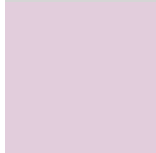
Monochromacy



Original Color
F9BFE7



Achromatopsia
D5D5D5



Achromatomaly
E2CDDC

CSS Examples

Text

The CSS property to change the color of the text to Hex F9BFE7 is called "color". The color property can be set on classes, ids or directly on the HTML element.

This example shows how text in the color #F9BFE7 looks like.

```
.text, #text, p{  
    color:#F9BFE7  
}
```

If you want to add a text shadow in that color use the text-shadow property, you can generate a text shadow directly with our [CSS Text Shadow Generator](#).

Here you see how black text with a 4 pixel #F9BFE7 colored shadow looks like.

```
.shadow{ text-shadow: 4px 4px 2px #F9BFE7
}
```

Border

The CSS property to change the border of an element to Hex F9BFE7 is called "border". The border property can be set on classes, ids or directly on the HTML element.

This example shows the color as border, it can be applied via the CSS property "border" or "border-color".

```
.border, #border, table{ border:4px solid
#F9BFE7 }
```

If only the border color should be changed use the property `border-color`.

```
.border{ border-color:#F9BFE7 }
```

If you want to add a box shadow in that color use:

Here you see how a box with a 4 pixel #F9BFE7 colored shadow looks like.

```
.boxshadow{ -moz-box-shadow:4px 4px 4px  
4px #F9BFE7; -webkit-box-shadow:4px 4px  
4px 4px #F9BFE7; box-shadow:4px 4px 4px  
4px #F9BFE7 }
```

Background

The CSS property to change the background color of an element to Hex F9BFE7 is called "background". The background property can be set on classes, ids or directly on the HTML element.

```
.background, #background, body{  
background:#F9BFE7 }
```

If only the background color should be changed can be used:

```
.background{ background-color:#F9BFE7 }
```

This example shows the color as background, it is applied via the CSS property "background".

To optimize and compress your CSS code, you can use our [online CSS compressor and optimizer](#) based on csstidy. If you want to create a linear or radial gradient as background or border, check our [CSS Gradient Generator](#).

Hey! You found this booklet interesting? Support Converting Colors with the new Membership Option!

The pro membership hides all ads, plus gives you double the colors in the color bucket, and more awesome pro features!

[Learn more, Memberships starting at \\$2.50/m!](#)

**Follow me
on Twitter!**

@ConvertingColor