

Converting Colors

Hex(F9C1C1)

Have a look what the booklet for
Hex(F9C1C1) contains.

Hex(F9C1C1)	3
<i>Conversions</i>	4
<i>Details</i>	6
<i>Harmonies</i>	11
<i>Previews</i>	23
<i>Color Blindness Simulation</i>	26
<i>CSS Examples</i>	29

Color

Hex(F9C1C1)

Conversions

Conversions Part 1

Format	Color
Hex	F9C1C1
RGB	249, 193, 193
RGB Percent	98%, 76%, 76%
CMY	0.0235, 0.2431, 0.2431
CMYK	0.00, 0.22, 0.22, 0.02
HSL	0°, 82%, 87%
HSV	0°, 22%, 98%
XYZ	67.7625, 62.1299, 58.8729
YIQ	209.7440, 33.3760, 11.8720

Conversions

Conversions Part 2

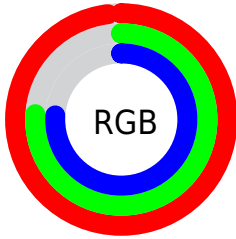
Format	Color
R _Y B	249, 193, 193
Decimal	16368065
CIE Lab	82.98, 20.02, 7.72
CIE LCh	83, 21.460, 21.096
Yxy	62.1299, 0.3590, 0.3291
Android (android.graphics.Color)	4294558145 (0xFFF9C1C1)
YUV	209.7440, -8.2548, 34.4275
Hunter-Lab	78.8225, 15.5143, 10.8918

Details

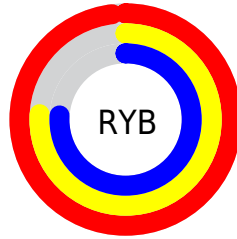
The Hex color **F9C1C1** is a light color, and the websafe version is hex **FFCCCC**. A complement of this color would be **C1F9F9**, and the grayscale version is **D2D2D2**.

A 20% lighter version of the original color is **FFFAF9**, and **C08B8C** is the 20% darker color. If you saturate the color by 10%, you get **F9A8A8**, and if you desaturate by 10%, it is **F9DADA**.

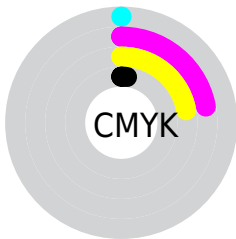
Distribution



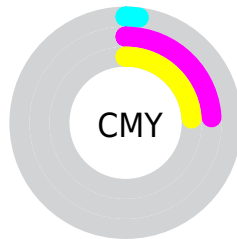
- Red (98%)
- Green (76%)
- Blue (76%)



- Red (98%)
- Yellow (76%)
- Blue (76%)



- Cyan (0%)
- Magenta (22%)
- Yellow (22%)
- Black (2%)



- Cyan (2%)
- Magenta (24%)
- Yellow (24%)

Brightness & Saturation Gradients

These gradients show how the Hex color F9C1C1 changes by changing the brightness by 10 percent. The first figure shows a shift by +10% for each color and the second figure -10%.

Similar to the brightness gradients but the following saturation gradients show a change of the Hex color F9C1C1 by changing the saturation by 10% instead.

 F9C1C1

 F9C1C1

FFFFFF

 DCA6A6

 FFFAF9

 C08B8C

 A47272

 89595A

 6F4142

 552A2C

 3D1518

 280000

 000000

 F9C1C1

 F9C1C1

 F9A8A8

 F9DADA

 F98F8F

 F9F3F3

 F97676

 F9FFFF

 F95D5D

 F94545

 F92C2C

 F91313

 F90000

Harmonies

Analogous

The Analogous color harmony consists of three colors that are next to each other on the color wheel.



F4C1D6



F9C1C1



F3C5B0

Triad

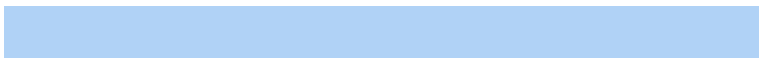
The Triadic color harmony groups three colors that are evenly spaced from another and form a triangle on the color wheel.



F9C1C1



B8D7B5



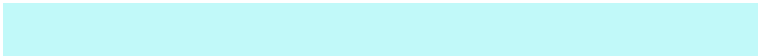
B0D2F6

Complementary

The Complementary color scheme is a pair of colors which are on the opposite of each other on the color wheel.



F9C1C1



C1F9F9

Split Complementary

Split-complementary colors differ from the complementary color scheme. The scheme consists of three colors, the original color and two neighbors of the complement color.



9DD7ED



F9C1C1



A4DAC8

Square

The Square scheme is like the rectangle color scheme, but the four colors are evenly spaced on the color wheel.



F9C1C1



CFD2A9



99DADC



CBCCF4

Rectangle

The Rectangle color scheme consists of four colors that form a rectangle on the color wheel.



F9C1C1



EAC9A9



99DADC



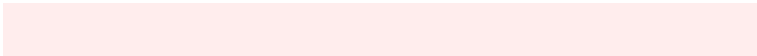
A8D4F4

Sweetspot

The Sweet Spot groups the original color and five complimentary colors.



F9C1C1



FFEDED



F9C1F9



807575



000000



808080

Same Dimension

The Same Dimension uses a secret algorithm to generate beautiful new colors.



F9C1C1



FFBABA



F9DDC1



7D7070



BD0000



3D0000

Inverse Universe

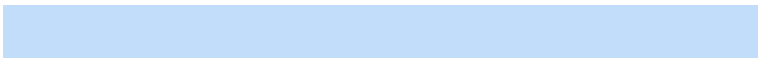
The Inverse Universe completely reimagines the original color for something new.



C1F9F9



BAFFFF



C1DDF9



707D7D



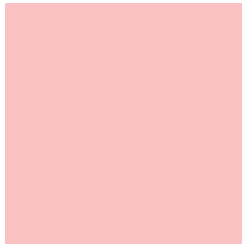
00BDBD



003D3D

Previews

White Background



This preview shows how the Hex color F9C1C1 looks on a white background.

Color Contrast Check

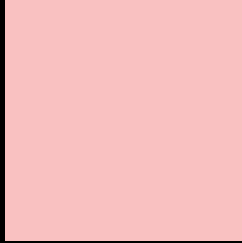
Large Text (above 18pt) WCAG AA × Fail

Any Text WCAG AA × Fail

Large Text (above 18pt) WCAG AAA × Fail

Any Text WCAG AAA × Fail

Black Background



This preview shows how the Hex color F9C1C1 looks on a black background.

Color Contrast Check

Large Text (above 18pt) WCAG AA ✓ Pass

Any Text WCAG AA ✓ Pass

Large Text (above 18pt) WCAG AAA ✓ Pass

Any Text WCAG AAA ✓ Pass

If you want to check with other color combinations, try the [Color Contrast Checker](#).

Hex F9C1C1 Background



This preview shows how black text looks on a background with the Hex color F9C1C1.

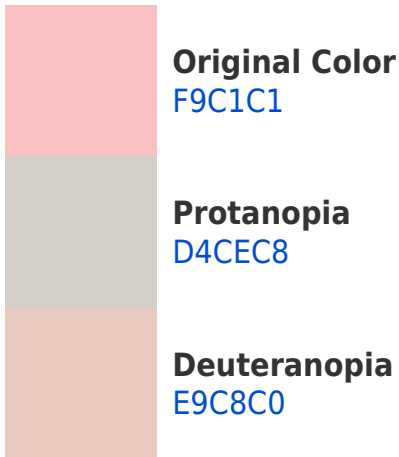


This preview shows how white text looks on a background with the Hex color F9C1C1.

Color Blindness Simulation

Color vision deficiency is a very complex topic, and I could not describe the different causes any better than Wikipedia does, so if you want to learn more, you should check out their [article about color blindness](#).

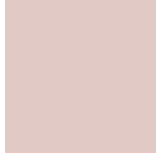
Dichromacy



Trichromacy



Original Color
F9C1C1



Protanomaly
E1C9C5



Deuteranomaly
EFC5C0

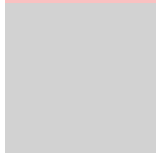


Tritanomaly
FAC0C9

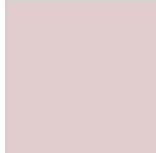
Monochromacy



Original Color
F9C1C1



Achromatopsia
D2D2D2



Achromatomaly
E0CCCC

CSS Examples

Text

The CSS property to change the color of the text to Hex F9C1C1 is called "color". The color property can be set on classes, ids or directly on the HTML element.

This example shows how text in the color #F9C1C1 looks like.

```
.text, #text, p{  
    color:#F9C1C1  
}
```

If you want to add a text shadow in that color use the text-shadow property, you can generate a text shadow directly with our [CSS Text Shadow Generator](#).

Here you see how black text with a 4 pixel #F9C1C1 colored shadow looks like.

```
.shadow{ text-shadow: 4px 4px 2px #F9C1C1  
}
```

Border

The CSS property to change the border of an element to Hex F9C1C1 is called "border". The border property can be set on classes, ids or directly on the HTML element.

This example shows the color as border, it can be applied via the CSS property "border" or "border-color".

```
.border, #border, table{ border:4px solid  
#F9C1C1 }
```

If only the border color should be changed use the property `border-color`.

```
.border{ border-color:#F9C1C1 }
```

If you want to add a box shadow in that color use:

Here you see how a box with a 4 pixel #F9C1C1 colored shadow looks like.

```
.boxshadow{ -moz-box-shadow:4px 4px 4px  
4px #F9C1C1; -webkit-box-shadow:4px 4px  
4px 4px #F9C1C1; box-shadow:4px 4px 4px  
4px #F9C1C1 }
```

Background

The CSS property to change the background color of an element to Hex F9C1C1 is called "background". The background property can be set on classes, ids or directly on the HTML element.

```
.background, #background, body{  
background:#F9C1C1 }
```

If only the background color should be changed can be used:

```
.background{ background-color:#F9C1C1 }
```

This example shows the color as background, it is applied via the CSS property "background".

To optimize and compress your CSS code, you can use our [online CSS compressor and optimizer](#) based on csstidy. If you want to create a linear or radial gradient as background or border, check our [CSS Gradient Generator](#).

Hey! You found this booklet interesting? Support Converting Colors with the new Membership Option!

The pro membership hides all ads, plus gives you double the colors in the color bucket, and more awesome pro features!

[Learn more, Memberships starting at \\$2.50/m!](#)

**Follow me
on Twitter!**

@ConvertingColor