

Converting Colors

Hex(F9C1CE)

Have a look what the booklet for
Hex(F9C1CE) contains.

Hex(F9C1CE)	3
<i>Conversions</i>	4
<i>Details</i>	6
<i>Harmonies</i>	11
<i>Previews</i>	23
<i>Color Blindness Simulation</i>	26
<i>CSS Examples</i>	29

Color

Hex(F9C1CE)

Conversions

Conversions Part 1

Format	Color
Hex	F9C1CE
RGB	249, 193, 206
RGB Percent	98%, 76%, 81%
CMY	0.0235, 0.2431, 0.1922
CMYK	0.00, 0.22, 0.17, 0.02
HSL	346°, 82%, 87%
HSV	346°, 22%, 98%
XYZ	69.2775, 62.7359, 66.8504
YIQ	211.2260, 29.2030, 15.9150

Conversions

Conversions Part 2

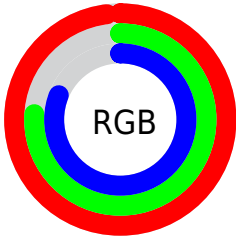
Format	Color
R_{YB}	249, 193, 206
Decimal	16368078
CIE _{Lab}	83.30, 21.94, 1.23
CIE _{LCh}	83, 21.978, 3.201
Yxy	62.7359, 0.3484, 0.3155
Android (android.graphics.Color)	4294558158 (0xFFFF9C1CE)
YUV	211.2260, -2.5764, 33.1278
Hunter-Lab	79.2060, 17.5144, 5.4030

Details

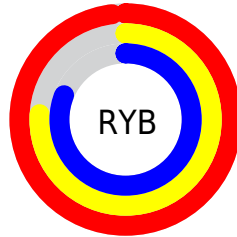
The Hex color **F9C1CE** is a light color, and the websafe version is hex **FFCCCC**. A complement of this color would be **C1F9EC**, and the grayscale version is **D3D3D3**.

A 20% lighter version of the original color is **FFFAFF**, and **C08B98** is the 20% darker color. If you saturate the color by 10%, you get **F9A8BB**, and if you desaturate by 10%, it is **F9DAE1**.

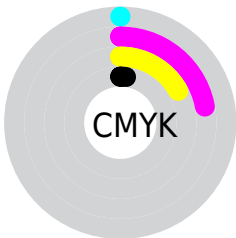
Distribution



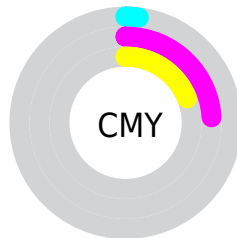
- Red (98%)
- Green (76%)
- Blue (81%)



- Red (98%)
- Yellow (76%)
- Blue (81%)



- Cyan (0%)
- Magenta (22%)
- Yellow (17%)
- Black (2%)



- Cyan (2%)
- Magenta (24%)
- Yellow (19%)

Brightness & Saturation Gradients

These gradients show how the Hex color F9C1CE changes by changing the brightness by 10 percent. The first figure shows a shift by +10% for each color and the second figure -10%.

Similar to the brightness gradients but the following saturation gradients show a change of the Hex color F9C1CE by changing the saturation by 10% instead.

 F9C1CE

 F9C1CE

FFFFFF

 DCA6B3

 FFFAFF

 C08B98

 A4717E

 895965

 6F414D

 562A36

 3D1421

 28000A

 000000

 F9C1CE

 F9C1CE

 F9A8BB

 F9DAE1

 F98FA8

 F9F3F4

 F97695

 F9FFFF

 F95D82

 F9456E

 F92C5B

 F91348

 F9003A

Harmonies

Analogous

The Analogous color harmony consists of three colors that are next to each other on the color wheel.



ECC4E3



F9C1CE



FAC3BA

Triad

The Triadic color harmony groups three colors that are evenly spaced from another and form a triangle on the color wheel.



F9C1CE



C6D5AD



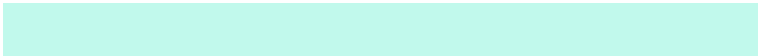
A3D7F4

Complementary

The Complementary color scheme is a pair of colors which are on the opposite of each other on the color wheel.



F9C1CE



C1F9EC

Split Complementary

Split-complementary colors differ from the complementary color scheme. The scheme consists of three colors, the original color and two neighbors of the complement color.



98DBE5



F9C1CE



AFDABC

Square

The Square scheme is like the rectangle color scheme, but the four colors are evenly spaced on the color wheel.



F9C1CE



DDCFA6



9DDCD1



BBD1F8

Rectangle

The Rectangle color scheme consists of four colors that form a rectangle on the color wheel.



F9C1CE



F4C6AF



9DDCD1



9DD8F0

Sweetspot

The Sweet Spot groups the original color and five complimentary colors.



F9C1CE



FFEDF1



ECC1F9



807578



000000



808080

Same Dimension

The Same Dimension uses a secret algorithm to generate beautiful new colors.



F9C1CE



FFBACA



F9D0C1



7D7073



BD002C



3D000E

Inverse Universe

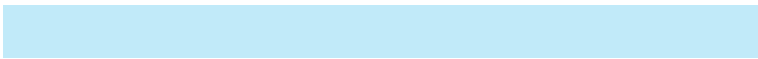
The Inverse Universe completely reimagines the original color for something new.



F9C1CE



FFBACA



C1EAF9



7D7073



BD002C



3D000E

Previews

White Background



This preview shows how the Hex color F9C1CE looks on a white background.

Color Contrast Check

Large Text (above 18pt) WCAG AA × Fail

Any Text WCAG AA × Fail

Large Text (above 18pt) WCAG AAA × Fail

Any Text WCAG AAA × Fail

Black Background



This preview shows how the Hex color F9C1CE looks on a black background.

Color Contrast Check

Large Text (above 18pt) WCAG AA ✓ Pass

Any Text WCAG AA ✓ Pass

Large Text (above 18pt) WCAG AAA ✓ Pass

Any Text WCAG AAA ✓ Pass

If you want to check with other color combinations, try the [Color Contrast Checker](#).

Hex F9C1CE Background



This preview shows how black text looks on a background with the Hex color F9C1CE.

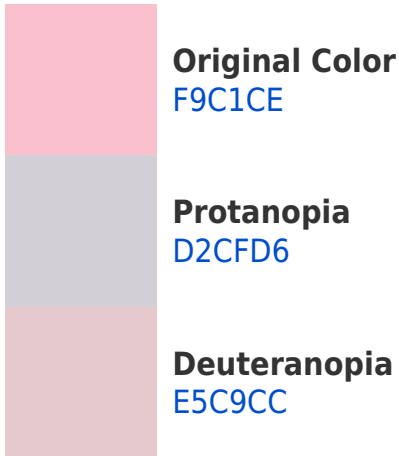


This preview shows how white text looks on a background with the Hex color F9C1CE.

Color Blindness Simulation

Color vision deficiency is a very complex topic, and I could not describe the different causes any better than Wikipedia does, so if you want to learn more, you should check out their [article about color blindness](#).

Dichromacy



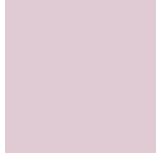


Tritanopia
F9C1D0

Trichromacy



Original Color
F9C1CE



Protanomaly
E0CAD3



Deuteranomaly
ECC6CD

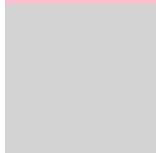


Tritanomaly
F9C1CF

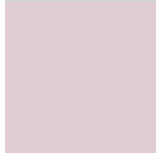
Monochromacy



Original Color
F9C1CE



Achromatopsia
D3D3D3



Achromatomaly
E1CCD1

CSS Examples

Text

The CSS property to change the color of the text to Hex F9C1CE is called "color". The color property can be set on classes, ids or directly on the HTML element.

This example shows how text in the color #F9C1CE looks like.

```
.text, #text, p{  
    color:#F9C1CE  
}
```

If you want to add a text shadow in that color use the text-shadow property, you can generate a text shadow directly with our [CSS Text Shadow Generator](#).

Here you see how black text with a 4 pixel #F9C1CE colored shadow looks like.

```
.shadow{ text-shadow: 4px 4px 2px #F9C1CE
}
```

Border

The CSS property to change the border of an element to Hex F9C1CE is called "border". The border property can be set on classes, ids or directly on the HTML element.

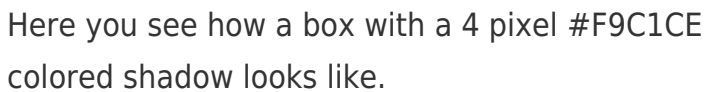
This example shows the color as border, it can be applied via the CSS property "border" or "border-color".

```
.border, #border, table{ border:4px solid
#F9C1CE }
```

If only the border color should be changed use the property `border-color`.

```
.border{ border-color:#F9C1CE }
```

If you want to add a box shadow in that color use:



Here you see how a box with a 4 pixel #F9C1CE colored shadow looks like.

```
.boxshadow{ -moz-box-shadow:4px 4px 4px  
4px #F9C1CE; -webkit-box-shadow:4px 4px  
4px 4px #F9C1CE; box-shadow:4px 4px 4px  
4px #F9C1CE }
```

Background

The CSS property to change the background color of an element to Hex F9C1CE is called "background". The background property can be set on classes, ids or directly on the HTML element.

```
.background, #background, body{  
background:#F9C1CE }
```

If only the background color should be changed can be used:

```
.background{ background-color:#F9C1CE }
```

This example shows the color as background, it is applied via the CSS property "background".

To optimize and compress your CSS code, you can use our [online CSS compressor and optimizer](#) based on csstidy. If you want to create a linear or radial gradient as background or border, check our [CSS Gradient Generator](#).

Hey! You found this booklet interesting? Support Converting Colors with the new Membership Option!

The pro membership hides all ads, plus gives you double the colors in the color bucket, and more awesome pro features!

[Learn more, Memberships starting at \\$2.50/m!](#)

**Follow me
on Twitter!**

@ConvertingColor