

Converting Colors

Hex(F9C6EE)

Have a look what the booklet for
Hex(F9C6EE) contains.

Hex(F9C6EE)	3
<i>Conversions</i>	4
<i>Details</i>	6
<i>Harmonies</i>	11
<i>Previews</i>	23
<i>Color Blindness Simulation</i>	26
<i>CSS Examples</i>	29

Color

Hex(F9C6EE)

Conversions

Conversions Part 1

Format	Color
Hex	F9C6EE
RGB	249, 198, 238
RGB Percent	98%, 78%, 93%
CMY	0.0235, 0.2235, 0.0667
CMYK	0.00, 0.20, 0.04, 0.02
HSL	313°, 81%, 88%
HSV	313°, 20%, 98%
XYZ	74.6936, 66.7010, 89.8267
YIQ	217.8090, 17.5560, 23.2520

Conversions

Conversions Part 2

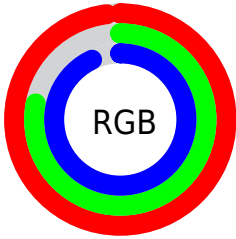
Format	Color
R _Y B	249, 198, 238
Decimal	16369390
CIE Lab	85.35, 24.54, -12.83
CIE LCh	85, 27.694, 332.400
Yxy	66.7010, 0.3230, 0.2885
Android (android.graphics.Color)	4294559470 (0xFFFF9C6EE)
YUV	217.8090, 9.9542, 27.3545
Hunter-Lab	81.6706, 20.3273, -8.0416

Details

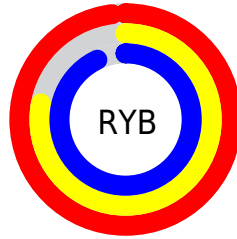
The Hex color **F9C6EE** is a light color, and the websafe version is hex **FFCCFF**. A complement of this color would be **C6F9D1**, and the grayscale version is **DADADA**.

A 20% lighter version of the original color is **FFFFFF**, and **C090B6** is the 20% darker color. If you saturate the color by 10%, you get **F9ADE9**, and if you desaturate by 10%, it is **F9DFF3**.

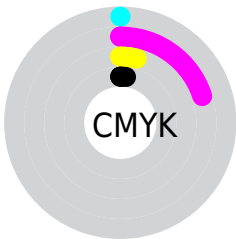
Distribution



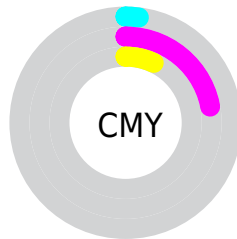
- Red (98%)
- Green (78%)
- Blue (93%)



- Red (98%)
- Yellow (78%)
- Blue (93%)



- Cyan (0%)
- Magenta (20%)
- Yellow (4%)
- Black (2%)



- Cyan (2%)
- Magenta (22%)
- Yellow (7%)

Brightness & Saturation Gradients

These gradients show how the Hex color F9C6EE changes by changing the brightness by 10 percent. The first figure shows a shift by +10% for each color and the second figure -10%.

Similar to the brightness gradients but the following saturation gradients show a change of the Hex color F9C6EE by changing the saturation by 10% instead.

 F9C6EE

FFFFFF

 F9C6EE

 DCABD2

 C090B6

 A5769B

 8A5D81

 704568

 572E50

 3F1739

 280023

 06000C

 F9C6EE

 F9C6EE

 F9ADE9

 F9DFF3

 F994E3

 F9F8F9

 F97BDE

 F9FFFE

 F962D9

 F9FFFF

 F94AD3

 F931CE

 F918C8

 F900C3

Harmonies

Analogous

The Analogous color harmony consists of three colors that are next to each other on the color wheel.



DCCEFF



F9C6EE



FFC2D4

Triad

The Triadic color harmony groups three colors that are evenly spaced from another and form a triangle on the color wheel.



F9C6EE



E7D4A1



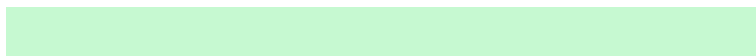
8AE3F0

Complementary

The Complementary color scheme is a pair of colors which are on the opposite of each other on the color wheel.



F9C6EE



C6F9D1

Split Complementary

Split-complementary colors differ from the complementary color scheme. The scheme consists of three colors, the original color and two neighbors of the complement color.



93E4D7



F9C6EE



CADCA9

Square

The Square scheme is like the rectangle color scheme, but the four colors are evenly spaced on the color wheel.



F9C6EE



FDCBA8



ACE2BC



98DEFF

Rectangle

The Rectangle color scheme consists of four colors that form a rectangle on the color wheel.



F9C6EE



FFC3C3



ACE2BC



8BE4E8

Sweetspot

The Sweet Spot groups the original color and five complimentary colors.



F9C6EE



FFF0FC



D0C6F9



80777E



000000



808080

Same Dimension

The Same Dimension uses a secret algorithm to generate beautiful new colors.



F9C6EE



FFBFF1



F9C6D5



7D707A



BD0094



3D0030

Inverse Universe

The Inverse Universe completely reimagines the original color for something new.



F9C6EE



FFBFF1



C6F9EA



7D707A



BD0094



3D0030

Previews

White Background



This preview shows how the Hex color F9C6EE looks on a white background.

Color Contrast Check

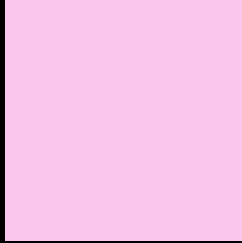
Large Text (above 18pt) WCAG AA × Fail

Any Text WCAG AA × Fail

Large Text (above 18pt) WCAG AAA × Fail

Any Text WCAG AAA × Fail

Black Background



This preview shows how the Hex color F9C6EE looks on a black background.

Color Contrast Check

Large Text (above 18pt) WCAG AA ✓ Pass

Any Text WCAG AA ✓ Pass

Large Text (above 18pt) WCAG AAA ✓ Pass

Any Text WCAG AAA ✓ Pass

If you want to check with other color combinations, try the [Color Contrast Checker](#).

Hex F9C6EE Background



This preview shows how black text looks on a background with the Hex color F9C6EE.

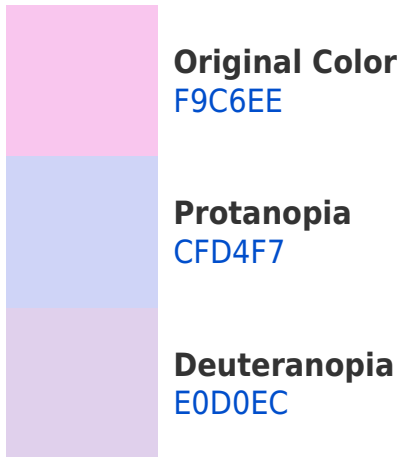


This preview shows how white text looks on a background with the Hex color F9C6EE.

Color Blindness Simulation

Color vision deficiency is a very complex topic, and I could not describe the different causes any better than Wikipedia does, so if you want to learn more, you should check out their [article about color blindness](#).

Dichromacy



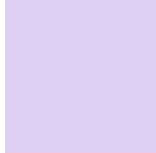


Tritanopia
F6CAD9

Trichromacy



Original Color
F9C6EE



Protanomaly
DECFF4



Deuteranomaly
E9CCED

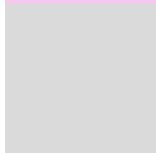


Tritanomaly
F7C9E1

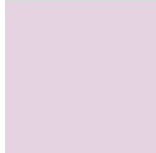
Monochromacy



Original Color
F9C6EE



Achromatopsia
DADADA



Achromatomaly
E5D3E1

CSS Examples

Text

The CSS property to change the color of the text to Hex F9C6EE is called "color". The color property can be set on classes, ids or directly on the HTML element.

This example shows how text in the color #F9C6EE looks like.

```
.text, #text, p{  
    color:#F9C6EE  
}
```

If you want to add a text shadow in that color use the text-shadow property, you can generate a text shadow directly with our [CSS Text Shadow Generator](#).

Here you see how black text with a 4 pixel #F9C6EE colored shadow looks like.

```
.shadow{ text-shadow: 4px 4px 2px #F9C6EE
}
```

Border

The CSS property to change the border of an element to Hex F9C6EE is called "border". The border property can be set on classes, ids or directly on the HTML element.

This example shows the color as border, it can be applied via the CSS property "border" or "border-color".

```
.border, #border, table{ border:4px solid
#F9C6EE }
```

If only the border color should be changed use the property `border-color`.

```
.border{ border-color:#F9C6EE }
```

If you want to add a box shadow in that color use:

Here you see how a box with a 4 pixel #F9C6EE colored shadow looks like.

```
.boxshadow{ -moz-box-shadow:4px 4px 4px  
4px #F9C6EE; -webkit-box-shadow:4px 4px  
4px 4px #F9C6EE; box-shadow:4px 4px 4px  
4px #F9C6EE }
```

Background

The CSS property to change the background color of an element to Hex F9C6EE is called "background". The background property can be set on classes, ids or directly on the HTML element.

```
.background, #background, body{  
background:#F9C6EE }
```

If only the background color should be changed can be used:

```
.background{ background-color:#F9C6EE }
```

This example shows the color as background, it is applied via the CSS property "background".

To optimize and compress your CSS code, you can use our [online CSS compressor and optimizer](#) based on csstidy. If you want to create a linear or radial gradient as background or border, check our [CSS Gradient Generator](#).

Hey! You found this booklet interesting? Support Converting Colors with the new Membership Option!

The pro membership hides all ads, plus gives you double the colors in the color bucket, and more awesome pro features!

[Learn more, Memberships starting at \\$2.50/m!](#)

**Follow me
on Twitter!**

@ConvertingColor