

Converting Colors

Hex(FA3A75)

Have a look what the booklet for
Hex(FA3A75) contains.

Hex(FA3A75)	3
<i>Conversions</i>	4
<i>Details</i>	6
<i>Harmonies</i>	11
<i>Previews</i>	23
<i>Color Blindness Simulation</i>	26
<i>CSS Examples</i>	29

Color

Hex(FA3A75)

Conversions

Conversions Part 1

Format	Color
Hex	FA3A75
RGB	250, 58, 117
RGB Percent	98%, 23%, 46%
CMY	0.0196, 0.7725, 0.5412
CMYK	0.00, 0.77, 0.53, 0.02
HSL	342°, 95%, 60%
HSV	342°, 77%, 98%
XYZ	44.1483, 24.6345, 19.2577
YIQ	122.1340, 95.4930, 59.0530

Conversions

Conversions Part 2

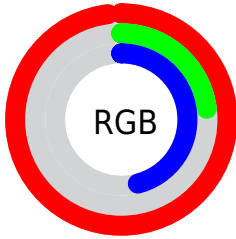
Format	Color
R_{YB}	250, 58, 117
Decimal	16398965
CIE _{Lab}	56.72, 73.79, 13.11
CIE _{LCh}	57, 74.942, 10.075
Yxy	24.6345, 0.5015, 0.2798
Android (android.graphics.Color)	4294589045 (0xFFFA3A75)
YUV	122.1340, -2.5311, 112.1385
Hunter-Lab	49.6331, 71.9165, 11.7386

Details

The Hex color **FA3A75** is a dark color, and the websafe version is hex **FF3366**. The color can be described as middle washed rose. A complement of this color would be **3AFABF**, and the grayscale version is **7A7A7A**.

A 20% lighter version of the original color is **FF7AA9**, and **BB0045** is the 20% darker color. If you saturate the color by 10%, you get **FA2164**, and if you desaturate by 10%, it is **FA5386**.

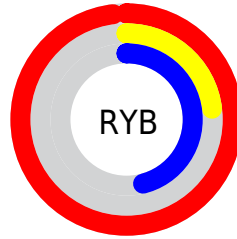
Distribution



Red (98%)

Green (23%)

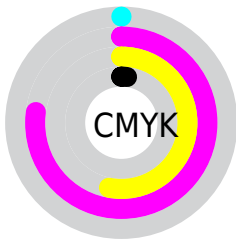
Blue (46%)



Red (98%)

Yellow (23%)

Blue (46%)

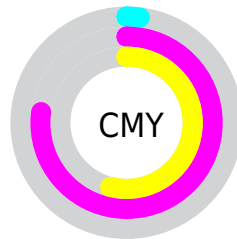


Cyan (0%)

Magenta (77%)

Yellow (53%)

Black (2%)



Cyan (2%)

Magenta (77%)

Yellow (54%)

Brightness & Saturation Gradients

These gradients show how the Hex color FA3A75 changes by changing the brightness by 10 percent. The first figure shows a shift by +10% for each color and the second figure -10%.

Similar to the brightness gradients but the following saturation gradients show a change of the Hex color FA3A75 by changing the saturation by 10% instead.

 FA3A75

 FA3A75

FFFFFF

 DA045D

 FF7AA9

 BB0045

 FF98C4

 9C0030

 FFB5E0

 7D001C

 FFD3FC

 5F0002

 FFF1FF

 410003

 1E0001

 000000

 FA3A75

 FA3A75

 FA2164

 FA5386

 FA0852

 FA6C98

 FA004D

 FA85A9

 FA9EBA

 FAB7CC

 FAD0DD

 FAE9EE

 FAFFFF

Harmonies

Analogous

The Analogous color harmony consists of three colors that are next to each other on the color wheel.



E548B6



FA3A75



ED5436

Triad

The Triadic color harmony groups three colors that are evenly spaced from another and form a triangle on the color wheel.



FA3A75



459B0A



009BFF

Complementary

The Complementary color scheme is a pair of colors which are on the opposite of each other on the color wheel.



FA3A75



3AFABF

Split Complementary

Split-complementary colors differ from the complementary color scheme. The scheme consists of three colors, the original color and two neighbors of the complement color.



00A3DB



FA3A75



00A259

Square

The Square scheme is like the rectangle color scheme, but the four colors are evenly spaced on the color wheel.



FA3A75



908C00



00A59D



0089FF

Rectangle

The Rectangle color scheme consists of four colors that form a rectangle on the color wheel.



FA3A75



D66A00



00A59D



009FF9

Sweetspot

The Sweet Spot groups the original color and five complimentary colors.



FA3A75



FFC4D6



BD3AFA



805C67



000000



808080

Same Dimension

The Same Dimension uses a secret algorithm to generate beautiful new colors.



FA3A75



FF145C



FA5D3A



7D7074



BD003A



3D0013

Inverse Universe

The Inverse Universe completely reimagines the original color for something new.



FA3A75



FF145C



3AD7FA



7D7074



BD003A



3D0013

Previews

White Background



This preview shows how the Hex color FA3A75 looks on a white background.

Color Contrast Check

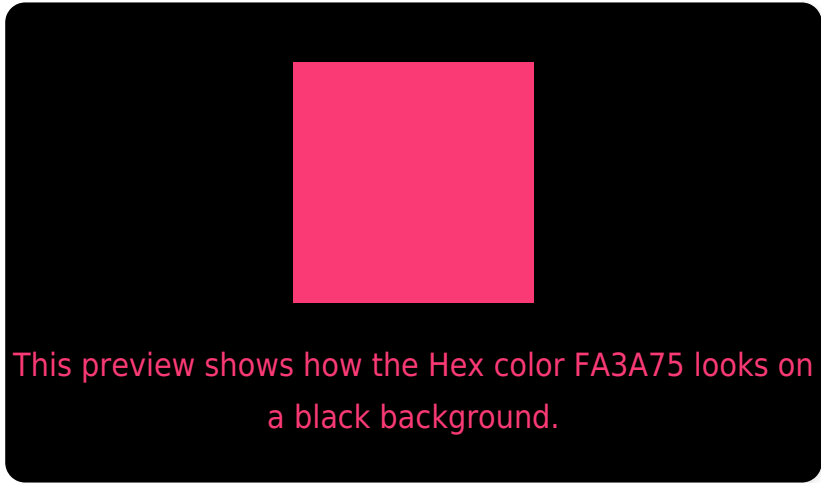
Large Text (above 18pt) WCAG AA ✓ Pass

Any Text WCAG AA × Fail

Large Text (above 18pt) WCAG AAA × Fail

Any Text WCAG AAA × Fail

Black Background



Color Contrast Check

Large Text (above 18pt) WCAG AA ✓ Pass

Any Text WCAG AA ✓ Pass

Large Text (above 18pt) WCAG AAA ✓ Pass

Any Text WCAG AAA × Fail

If you want to check with other color combinations, try the [Color Contrast Checker](#).

Hex FA3A75 Background



This preview shows how black text looks on a background with the Hex color FA3A75.

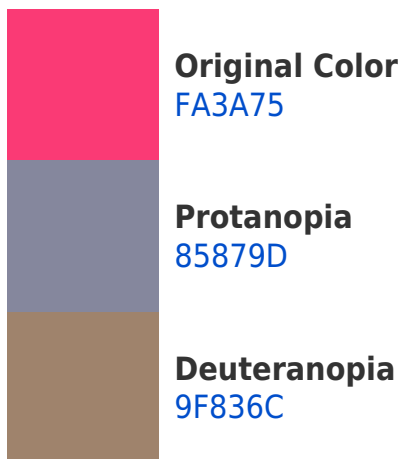


This preview shows how white text looks on a background with the Hex color FA3A75.

Color Blindness Simulation

Color vision deficiency is a very complex topic, and I could not describe the different causes any better than Wikipedia does, so if you want to learn more, you should check out their [article about color blindness](#).

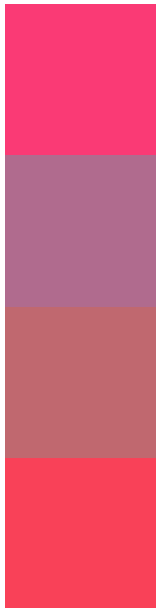
Dichromacy





Tritanopia
F84548

Trichromacy



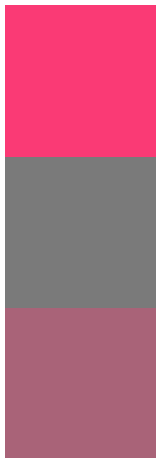
Original Color
FA3A75

Protanomaly
B06B8E

Deuteranomaly
C0686F

Tritanomaly
F94158

Monochromacy



Original Color
FA3A75

Achromatopsia
7A7A7A

Achromatomaly
A96378

CSS Examples

Text

The CSS property to change the color of the text to Hex FA3A75 is called "color". The color property can be set on classes, ids or directly on the HTML element.

This example shows how text in the color #FA3A75 looks like.

```
.text, #text, p{  
    color:#FA3A75  
}
```

If you want to add a text shadow in that color use the text-shadow property, you can generate a text shadow directly with our [CSS Text Shadow Generator](#).

Here you see how black text with a 4 pixel #FA3A75 colored shadow looks like.

```
.shadow{ text-shadow: 4px 4px 2px #FA3A75
}
```

Border

The CSS property to change the border of an element to Hex FA3A75 is called "border". The border property can be set on classes, ids or directly on the HTML element.

This example shows the color as border, it can be applied via the CSS property "border" or "border-color".

```
.border, #border, table{ border:4px solid
#FA3A75 }
```

If only the border color should be changed use the property `border-color`.

```
.border{ border-color:#FA3A75 }
```

If you want to add a box shadow in that color use:

Here you see how a box with a 4 pixel #FA3A75 colored shadow looks like.

```
.boxshadow{ -moz-box-shadow:4px 4px 4px  
4px #FA3A75; -webkit-box-shadow:4px 4px  
4px 4px #FA3A75; box-shadow:4px 4px 4px  
4px #FA3A75 }
```

Background

The CSS property to change the background color of an element to Hex FA3A75 is called "background". The background property can be set on classes, ids or directly on the HTML element.

```
.background, #background, body{  
background:#FA3A75 }
```

If only the background color should be changed can be used:

```
.background{ background-color:#FA3A75 }
```

This example shows the color as background, it is applied via the CSS property "background".

To optimize and compress your CSS code, you can use our [online CSS compressor and optimizer](#) based on csstidy. If you want to create a linear or radial gradient as background or border, check our [CSS Gradient Generator](#).

Hey! You found this booklet interesting? Support Converting Colors with the new Membership Option!

The pro membership hides all ads, plus gives you double the colors in the color bucket, and more awesome pro features!

[Learn more, Memberships starting at \\$2.50/m!](#)

**Follow me
on Twitter!**

@ConvertingColor