

# Converting Colors

Hex(FA4D83)

Have a look what the booklet for  
Hex(FA4D83) contains.

<b>Hex(FA4D83)</b> .....	3
<i><b>Conversions</b></i> .....	4
<i><b>Details</b></i> .....	6
<i><b>Harmonies</b></i> .....	11
<i><b>Previews</b></i> .....	23
<i><b>Color Blindness Simulation</b></i> .....	26
<i><b>CSS Examples</b></i> .....	29

# Color

**Hex(FA4D83)**

# Conversions

## Conversions Part 1

Format	Color
Hex	FA4D83
RGB	250, 77, 131
RGB Percent	98%, 30%, 51%
CMY	0.0196, 0.6980, 0.4863
CMYK	0.00, 0.69, 0.48, 0.02
HSL	341°, 95%, 64%
HSV	341°, 69%, 98%
XYZ	46.1750, 27.2704, 24.3028
YIQ	134.8830, 85.7740, 53.4700

# Conversions

## Conversions Part 2

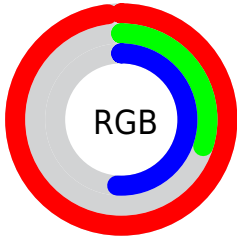
<b>Format</b>	<b>Color</b>
<b>R<sub>YB</sub></b>	250, 77, 131
Decimal	16403843
CIE <sub>Lab</sub>	59.22, 68.82, 8.38
CIE <sub>LCh</sub>	59, 69.328, 6.940
Yxy	27.2704, 0.4724, 0.2790
Android (android.graphics.Color)	4294593923 (0xFFFA4D83)
YUV	134.8830, -1.9143, 100.9576
Hunter-Lab	52.2211, 66.4463, 8.9623

# Details

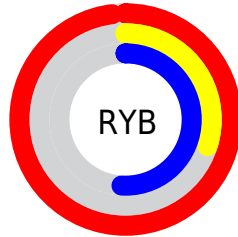
The Hex color **FA4D83** is a light color, and the websafe version is hex **FF6699**. The color can be described as light washed rose. A complement of this color would be **4DFAC4**, and the grayscale version is **878787**.

A 20% lighter version of the original color is **FF88B8**, and **BC0052** is the 20% darker color. If you saturate the color by 10%, you get **FA3472**, and if you desaturate by 10%, it is **FA6694**.

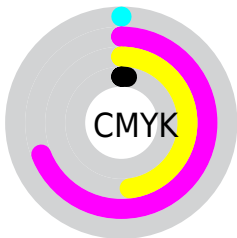
# Distribution



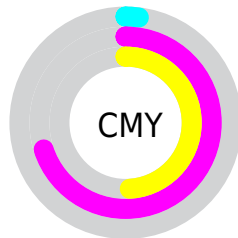
- Red (98%)
- Green (30%)
- Blue (51%)



- Red (98%)
- Yellow (30%)
- Blue (51%)



- Cyan (0%)
- Magenta (69%)
- Yellow (48%)
- Black (2%)



- Cyan (2%)
- Magenta (70%)
- Yellow (49%)

# Brightness & Saturation Gradients

These gradients show how the Hex color FA4D83 changes by changing the brightness by 10 percent. The first figure shows a shift by +10% for each color and the second figure -10%.

Similar to the brightness gradients but the following saturation gradients show a change of the Hex color FA4D83 by changing the saturation by 10% instead.



 FA4D83

 FA4D83

FFFFFF

 DB2B6A

 FF88B8

 BC0052

 FFA6D3

 9D003B

 FFC3F0

 7F0026

 FFE1FF

 610012

 450003

 240001

 000000

 FA4D83

 FA4D83

FA3472

FA6694

FA1B61

FA7FA5

FA024F

FA98B7

FA004E

FAB1C8

FACAD9

FAE3EA

FAFCFB

FAFFFF

# Harmonies

## Analogous

The Analogous color harmony consists of three colors that are next to each other on the color wheel.



E25AC0



FA4D83



F15E48

# Triad

The Triadic color harmony groups three colors that are evenly spaced from another and form a triangle on the color wheel.



FA4D83



5D9F1E



00A2FF

# Complementary

The Complementary color scheme is a pair of colors which are on the opposite of each other on the color wheel.



FA4D83



4DFAC4

# Split Complementary

Split-complementary colors differ from the complementary color scheme. The scheme consists of three colors, the original color and two neighbors of the complement color.



00A9D7



FA4D83



00A75C

# Square

The Square scheme is like the rectangle color scheme, but the four colors are evenly spaced on the color wheel.



FA4D83



9E9000



00AA9B



0091FF

# Rectangle

The Rectangle color scheme consists of four colors that form a rectangle on the color wheel.



FA4D83



DD7124



00AA9B



00A5F4



# Sweetspot

The Sweet Spot groups the original color and five complimentary colors.



FA4D83



FFC9DA



C34DFA



80606A



000000



808080



# Same Dimension

The Same Dimension uses a secret algorithm to generate beautiful new colors.



FA4D83



FF2B6D



FA6D4D



7D7074



BD003B



3D0013



# Inverse Universe

The Inverse Universe completely reimagines the original color for something new.



FA4D83



FF2B6D



4DDAFA



7D7074



BD003B



3D0013



# Previews

## White Background



This preview shows how the Hex color FA4D83 looks on a white background.

## Color Contrast Check

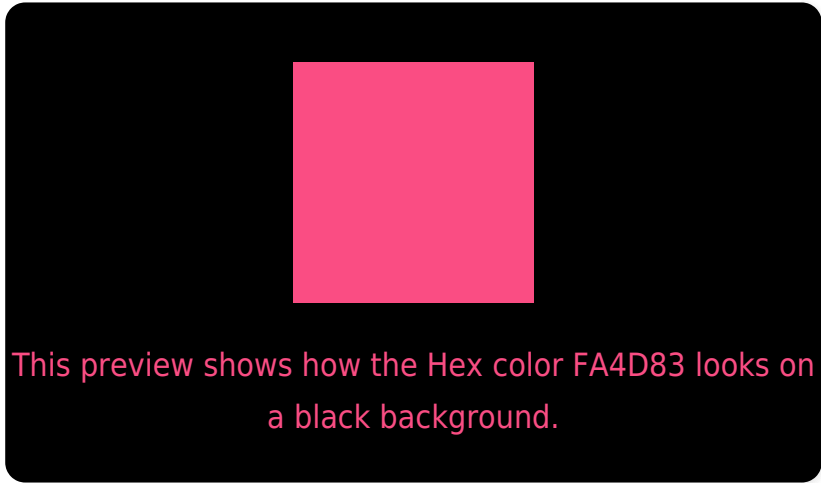
Large Text (above 18pt) WCAG AA ✓ Pass

Any Text WCAG AA ✗ Fail

Large Text (above 18pt) WCAG AAA ✗ Fail

Any Text WCAG AAA ✗ Fail

# Black Background



## Color Contrast Check

Large Text (above 18pt) WCAG AA ✓ Pass

Any Text WCAG AA ✓ Pass

Large Text (above 18pt) WCAG AAA ✓ Pass

Any Text WCAG AAA × Fail

If you want to check with other color combinations, try the [Color Contrast Checker](#).



## Hex FA4D83 Background



This preview shows how black text looks on a background with the Hex color FA4D83.

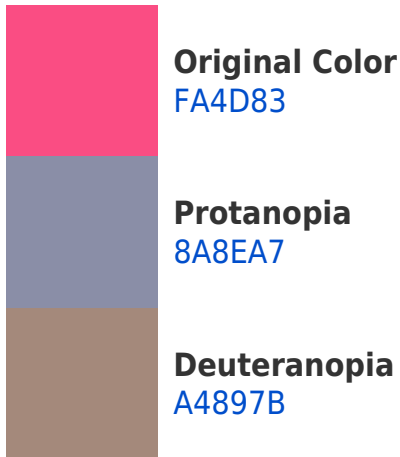


This preview shows how white text looks on a background with the Hex color FA4D83.

# Color Blindness Simulation

Color vision deficiency is a very complex topic, and I could not describe the different causes any better than Wikipedia does, so if you want to learn more, you should check out their [article about color blindness](#).

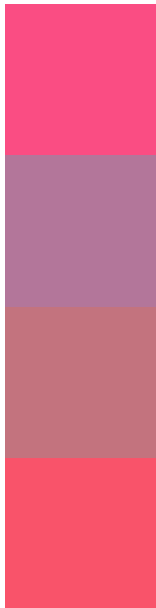
## Dichromacy





**Tritanopia**  
F8565B

# Trichromacy



**Original Color**  
FA4D83

**Protanomaly**  
B3769A

**Deuteranomaly**  
C3737E

**Tritanomaly**  
F9536A

# Monochromacy



**Original Color**  
FA4D83

**Achromatopsia**  
878787

**Achromatomaly**  
B17286

# CSS Examples

## Text

The CSS property to change the color of the text to Hex FA4D83 is called "color". The color property can be set on classes, ids or directly on the HTML element.

This example shows how text in the color #FA4D83 looks like.

```
.text, #text, p{  
    color:#FA4D83  
}
```

If you want to add a text shadow in that color use the text-shadow property, you can generate a text shadow directly with our [CSS Text Shadow Generator](#).

Here you see how black text with a 4 pixel #FA4D83 colored shadow looks like.

```
.shadow{ text-shadow: 4px 4px 2px #FA4D83
}
```

## Border

The CSS property to change the border of an element to Hex FA4D83 is called "border". The border property can be set on classes, ids or directly on the HTML element.

This example shows the color as border, it can be applied via the CSS property "border" or "border-color".

```
.border, #border, table{ border:4px solid
#FA4D83 }
```

If only the border color should be changed use the property `border-color`.

```
.border{ border-color:#FA4D83 }
```

If you want to add a box shadow in that color use:

Here you see how a box with a 4 pixel #FA4D83 colored shadow looks like.

```
.boxshadow{ -moz-box-shadow:4px 4px 4px  
4px #FA4D83; -webkit-box-shadow:4px 4px  
4px 4px #FA4D83; box-shadow:4px 4px 4px  
4px #FA4D83 }
```

# Background

The CSS property to change the background color of an element to Hex FA4D83 is called "background". The background property can be set on classes, ids or directly on the HTML element.

```
.background, #background, body{  
background:#FA4D83 }
```

If only the background color should be changed can be used:

```
.background{ background-color:#FA4D83 }
```

This example shows the color as background, it is applied via the CSS property "background".

To optimize and compress your CSS code, you can use our [online CSS compressor and optimizer](#) based on csstidy. If you want to create a linear or radial gradient as background or border, check our [CSS Gradient Generator](#).



Hey! You found this booklet interesting? Support Converting Colors with the new Membership Option!

The pro membership hides all ads, plus gives you double the colors in the color bucket, and more awesome pro features!

**[Learn more, Memberships starting at \\$2.50/m!](#)**

**Follow me  
on Twitter!**

@ConvertingColor