

Converting Colors

Hex(FA5C8C)

Have a look what the booklet for
Hex(FA5C8C) contains.

Hex(FA5C8C)	3
<i>Conversions</i>	4
<i>Details</i>	6
<i>Harmonies</i>	11
<i>Previews</i>	23
<i>Color Blindness Simulation</i>	26
<i>CSS Examples</i>	29

Color

Hex(FA5C8C)

Conversions

Conversions Part 1

Format	Color
Hex	FA5C8C
RGB	250, 92, 140
RGB Percent	98%, 36%, 55%
CMY	0.0196, 0.6392, 0.4510
CMYK	0.00, 0.63, 0.44, 0.02
HSL	342°, 94%, 67%
HSV	342°, 63%, 98%
XYZ	47.9851, 29.8717, 28.0477
YIQ	144.7140, 78.7600, 48.4240

Conversions

Conversions Part 2

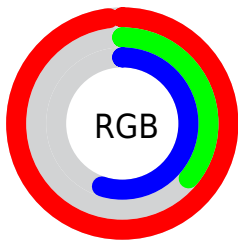
Format	Color
R _Y B	250, 92, 140
Decimal	16407692
CIE Lab	61.54, 63.89, 6.44
CIE LCh	62, 64.216, 5.756
Yxy	29.8717, 0.4531, 0.2821
Android (android.graphics.Color)	4294597772 (0xFFFA5C8C)
YUV	144.7140, -2.3240, 92.3358
Hunter-Lab	54.6550, 61.0701, 7.8323

Details

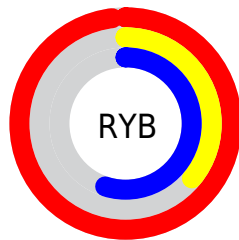
The Hex color **FA5C8C** is a light color, and the websafe version is hex **FF6699**. The color can be described as light muted rose. A complement of this color would be **5CFACA**, and the grayscale version is **919191**.

A 20% lighter version of the original color is **FF95C1**, and **BD195A** is the 20% darker color. If you saturate the color by 10%, you get **FA437B**, and if you desaturate by 10%, it is **FA759D**.

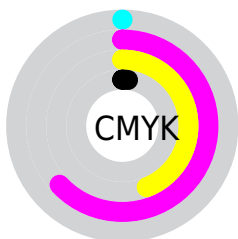
Distribution



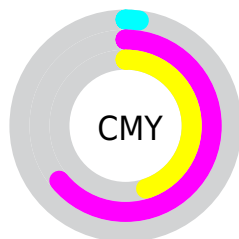
- Red (98%)
- Green (36%)
- Blue (55%)



- Red (98%)
- Yellow (36%)
- Blue (55%)



- Cyan (0%)
- Magenta (63%)
- Yellow (44%)
- Black (2%)



- Cyan (2%)
- Magenta (64%)
- Yellow (45%)

Brightness & Saturation Gradients

These gradients show how the Hex color FA5C8C changes by changing the brightness by 10 percent. The first figure shows a shift by +10% for each color and the second figure -10%.

Similar to the brightness gradients but the following saturation gradients show a change of the Hex color FA5C8C by changing the saturation by 10% instead.

 FA5C8C

 FA5C8C

FFFFFF

 DB3E73

 FF95C1

 BD195A

 FFB2DD

 9E0043

 FFCFFA

 81002D

 FFEDFF

 630019

 480003

 290001

 000000

 FA5C8C

 FA5C8C

 FA437B

 FA759D

 FA2A69

 FA8EAF

 FA1158

 FAA7C0

 FA004C

 FAC0D2

 FAD9E3

 FAF2F4

 FAFFFF

Harmonies

Analogous

The Analogous color harmony consists of three colors that are next to each other on the color wheel.



E167C4



FA5C8C



F46955

Triad

The Triadic color harmony groups three colors that are evenly spaced from another and form a triangle on the color wheel.



FA5C8C



6BA42F



00A7FC

Complementary

The Complementary color scheme is a pair of colors which are on the opposite of each other on the color wheel.



FA5C8C



5CFACA

Split Complementary

Split-complementary colors differ from the complementary color scheme. The scheme consists of three colors, the original color and two neighbors of the complement color.



00AED6



FA5C8C



00AC63

Square

The Square scheme is like the rectangle color scheme, but the four colors are evenly spaced on the color wheel.



FA5C8C



A7950A



00AF9E



0098FF

Rectangle

The Rectangle color scheme consists of four colors that form a rectangle on the color wheel.



FA5C8C



E27835



00AF9E



00AAF2

Sweetspot

The Sweet Spot groups the original color and five complimentary colors.



FA5C8C



FFCFDD



C85CFA



80626B



000000



808080

Same Dimension

The Same Dimension uses a secret algorithm to generate beautiful new colors.



FA5C8C



FF3D78



FA795C



7D7074



BD0039



3D0013

Inverse Universe

The Inverse Universe completely reimagines the original color for something new.



FA5C8C



FF3D78



5CDDFA



7D7074



BD0039



3D0013

Previews

White Background



This preview shows how the Hex color FA5C8C looks on a white background.

Color Contrast Check

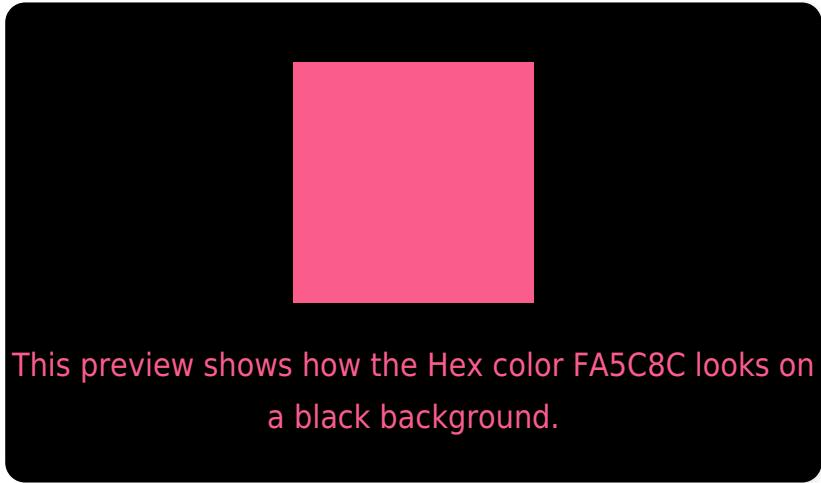
Large Text (above 18pt) WCAG AA ✓ Pass

Any Text WCAG AA × Fail

Large Text (above 18pt) WCAG AAA × Fail

Any Text WCAG AAA × Fail

Black Background



Color Contrast Check

Large Text (above 18pt) WCAG AA ✓ Pass

Any Text WCAG AA ✓ Pass

Large Text (above 18pt) WCAG AAA ✓ Pass

Any Text WCAG AAA × Fail

If you want to check with other color combinations, try the [Color Contrast Checker](#).

Hex FA5C8C Background



This preview shows how black text looks on a background with the Hex color FA5C8C.



This preview shows how white text looks on a background with the Hex color FA5C8C.

Color Blindness Simulation

Color vision deficiency is a very complex topic, and I could not describe the different causes any better than Wikipedia does, so if you want to learn more, you should check out their [article about color blindness](#).

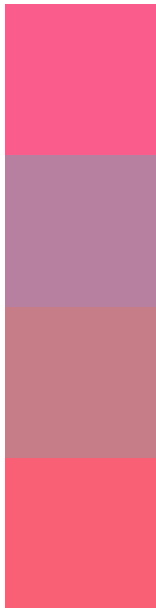
Dichromacy





Tritanopia
F86369

Trichromacy



Original Color
FA5C8C

Protanomaly
B780A0

Deuteranomaly
C67D87

Tritanomaly
F96076

Monochromacy



Original Color
FA5C8C

Achromatopsia
919191

Achromatomaly
B77E8F

CSS Examples

Text

The CSS property to change the color of the text to Hex FA5C8C is called "color". The color property can be set on classes, ids or directly on the HTML element.

This example shows how text in the color #FA5C8C looks like.

```
.text, #text, p{  
    color:#FA5C8C  
}
```

If you want to add a text shadow in that color use the text-shadow property, you can generate a text shadow directly with our [CSS Text Shadow Generator](#).

Here you see how black text with a 4 pixel #FA5C8C colored shadow looks like.

```
.shadow{ text-shadow: 4px 4px 2px #FA5C8C
}
```

Border

The CSS property to change the border of an element to Hex FA5C8C is called "border". The border property can be set on classes, ids or directly on the HTML element.

This example shows the color as border, it can be applied via the CSS property "border" or "border-color".

```
.border, #border, table{ border:4px solid
#FA5C8C }
```

If only the border color should be changed use the property `border-color`.

```
.border{ border-color:#FA5C8C }
```

If you want to add a box shadow in that color use:

Here you see how a box with a 4 pixel #FA5C8C colored shadow looks like.

```
.boxshadow{ -moz-box-shadow:4px 4px 4px  
4px #FA5C8C; -webkit-box-shadow:4px 4px  
4px 4px #FA5C8C; box-shadow:4px 4px 4px  
4px #FA5C8C }
```

Background

The CSS property to change the background color of an element to Hex FA5C8C is called "background". The background property can be set on classes, ids or directly on the HTML element.

```
.background, #background, body{  
background:#FA5C8C }
```

If only the background color should be changed can be used:

```
.background{ background-color:#FA5C8C }
```

This example shows the color as background, it is applied via the CSS property "background".

To optimize and compress your CSS code, you can use our [online CSS compressor and optimizer](#) based on csstidy. If you want to create a linear or radial gradient as background or border, check our [CSS Gradient Generator](#).

Hey! You found this booklet interesting? Support Converting Colors with the new Membership Option!

The pro membership hides all ads, plus gives you double the colors in the color bucket, and more awesome pro features!

[Learn more, Memberships starting at \\$2.50/m!](#)

**Follow me
on Twitter!**

@ConvertingColor