

Converting Colors

Hex(FA6081)

Have a look what the booklet for
Hex(FA6081) contains.

Hex(FA6081)	3
<i>Conversions</i>	4
<i>Details</i>	6
<i>Harmonies</i>	11
<i>Previews</i>	23
<i>Color Blindness Simulation</i>	26
<i>CSS Examples</i>	29

Color

Hex(FA6081)

Conversions

Conversions Part 1

Format	Color
Hex	FA6081
RGB	250, 96, 129
RGB Percent	98%, 38%, 51%
CMY	0.0196, 0.6235, 0.4941
CMYK	0.00, 0.62, 0.48, 0.02
HSL	347°, 94%, 68%
HSV	347°, 62%, 98%
XYZ	47.5697, 30.2747, 24.1053
YIQ	145.8080, 81.1910, 42.9110

Conversions

Conversions Part 2

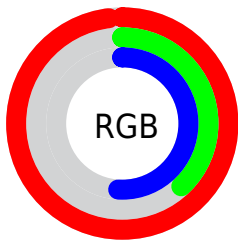
Format	Color
R _Y B	250, 96, 129
Decimal	16408705
CIE Lab	61.89, 61.24, 13.30
CIE LCh	62, 62.672, 12.257
Yxy	30.2747, 0.4666, 0.2970
Android (android.graphics.Color)	4294598785 (0xFFFA6081)
YUV	145.8080, -8.2863, 91.3764
Hunter-Lab	55.0225, 58.0328, 12.5408

Details

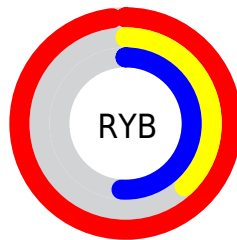
The Hex color **FA6081** is a light color, and the websafe version is hex **FF6699**. A complement of this color would be **60FAD9**, and the grayscale version is **929292**.

A 20% lighter version of the original color is **FF99B6**, and **BC2250** is the 20% darker color. If you saturate the color by 10%, you get **FA476D**, and if you desaturate by 10%, it is **FA7995**.

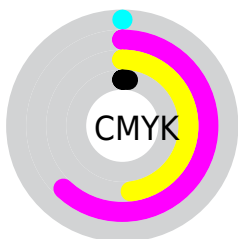
Distribution



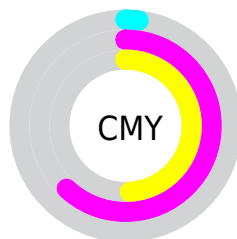
- Red (98%)
- Green (38%)
- Blue (51%)



- Red (98%)
- Yellow (38%)
- Blue (51%)



- Cyan (0%)
- Magenta (62%)
- Yellow (48%)
- Black (2%)



- Cyan (2%)
- Magenta (62%)
- Yellow (49%)

Brightness & Saturation Gradients

These gradients show how the Hex color FA6081 changes by changing the brightness by 10 percent. The first figure shows a shift by +10% for each color and the second figure -10%.

Similar to the brightness gradients but the following saturation gradients show a change of the Hex color FA6081 by changing the saturation by 10% instead.

 FA6081

 FA6081

FFFFFF

 DB4368

 FF99B6

 BC2250

 FFB5D1

 9E0039

 FFD2ED

 800024

 FFF0FF

 620010

 460002

 280001

 000000

 FA6081

 FA6081

 FA476D

 FA7995

 FA2E5A

 FA92A8

 FA1546

 FAABBC

 FA0036

 FAC4D0

 FADDE3

 FAF6F7

 FAFFFF

Harmonies

Analogous

The Analogous color harmony consists of three colors that are next to each other on the color wheel.



E966B9



FA6081



EE704D

Triad

The Triadic color harmony groups three colors that are evenly spaced from another and form a triangle on the color wheel.



FA6081



5EA73D



00A5FF

Complementary

The Complementary color scheme is a pair of colors which are on the opposite of each other on the color wheel.



FA6081



60FAD9

Split Complementary

Split-complementary colors differ from the complementary color scheme. The scheme consists of three colors, the original color and two neighbors of the complement color.



00ADDF



FA6081



00AE72

Square

The Square scheme is like the rectangle color scheme, but the four colors are evenly spaced on the color wheel.



FA6081



9C9A17



00B0AB



4D94FF

Rectangle

The Rectangle color scheme consists of four colors that form a rectangle on the color wheel.



FA6081



DA7F30



00B0AB



00A9F7

Sweetspot

The Sweet Spot groups the original color and five complimentary colors.



FA6081



FFD1DB



D960FA



806369



000000



808080

Same Dimension

The Same Dimension uses a secret algorithm to generate beautiful new colors.



FA6081



FF426B



FA8C60



7D7073



BD0028



3D000D

Inverse Universe

The Inverse Universe completely reimagines the original color for something new.



FA6081



FF426B



60CEFA



7D7073



BD0028



3D000D

Previews

White Background



This preview shows how the Hex color FA6081 looks on a white background.

Color Contrast Check

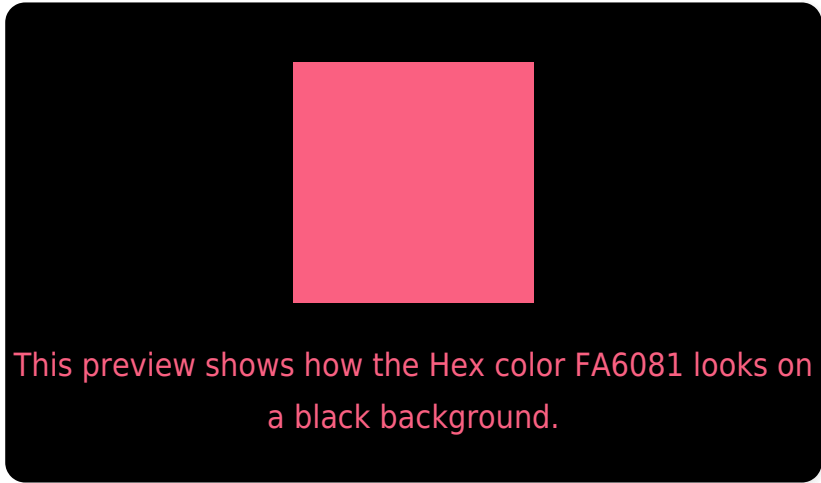
Large Text (above 18pt) WCAG AA × Fail

Any Text WCAG AA × Fail

Large Text (above 18pt) WCAG AAA × Fail

Any Text WCAG AAA × Fail

Black Background



Color Contrast Check

Large Text (above 18pt) WCAG AA ✓ Pass

Any Text WCAG AA ✓ Pass

Large Text (above 18pt) WCAG AAA ✓ Pass

Any Text WCAG AAA ✓ Pass

If you want to check with other color combinations, try the [Color Contrast Checker](#).

Hex FA6081 Background



This preview shows how black text looks on a background with the Hex color FA6081.



This preview shows how white text looks on a background with the Hex color FA6081.

Color Blindness Simulation

Color vision deficiency is a very complex topic, and I could not describe the different causes any better than Wikipedia does, so if you want to learn more, you should check out their [article about color blindness](#).

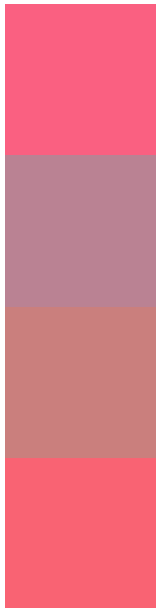
Dichromacy





Tritanopia
F9646B

Trichromacy



Original Color
FA6081

Protanomaly
BA8293

Deuteranomaly
CA7F7D

Tritanomaly
F96373

Monochromacy



Original Color
FA6081

Achromatopsia
929292

Achromatomaly
B8808C

CSS Examples

Text

The CSS property to change the color of the text to Hex FA6081 is called "color". The color property can be set on classes, ids or directly on the HTML element.

This example shows how text in the color #FA6081 looks like.

```
.text, #text, p{  
    color:#FA6081  
}
```

If you want to add a text shadow in that color use the text-shadow property, you can generate a text shadow directly with our [CSS Text Shadow Generator](#).

Here you see how black text with a 4 pixel #FA6081 colored shadow looks like.

```
.shadow{ text-shadow: 4px 4px 2px #FA6081
}
```

Border

The CSS property to change the border of an element to Hex FA6081 is called "border". The border property can be set on classes, ids or directly on the HTML element.

This example shows the color as border, it can be applied via the CSS property "border" or "border-color".

```
.border, #border, table{ border:4px solid
#FA6081 }
```

If only the border color should be changed use the property `border-color`.

```
.border{ border-color:#FA6081 }
```

If you want to add a box shadow in that color use:

Here you see how a box with a 4 pixel #FA6081 colored shadow looks like.

```
.boxshadow{ -moz-box-shadow:4px 4px 4px  
4px #FA6081; -webkit-box-shadow:4px 4px  
4px 4px #FA6081; box-shadow:4px 4px 4px  
4px #FA6081 }
```

Background

The CSS property to change the background color of an element to Hex FA6081 is called "background". The background property can be set on classes, ids or directly on the HTML element.

```
.background, #background, body{  
background:#FA6081 }
```

If only the background color should be changed can be used:

```
.background{ background-color:#FA6081 }
```

This example shows the color as background, it is applied via the CSS property "background".

To optimize and compress your CSS code, you can use our [online CSS compressor and optimizer](#) based on csstidy. If you want to create a linear or radial gradient as background or border, check our [CSS Gradient Generator](#).

Hey! You found this booklet interesting? Support Converting Colors with the new Membership Option!

The pro membership hides all ads, plus gives you double the colors in the color bucket, and more awesome pro features!

[Learn more, Memberships starting at \\$2.50/m!](#)

**Follow me
on Twitter!**

@ConvertingColor