

# Converting Colors

Hex(FA9258)

Have a look what the booklet for  
Hex(FA9258) contains.

<b>Hex(FA9258)</b> .....	3
<b><i>Conversions</i></b> .....	4
<b><i>Details</i></b> .....	6
<b><i>Harmonies</i></b> .....	11
<b><i>Previews</i></b> .....	23
<b><i>Color Blindness Simulation</i></b> .....	26
<b><i>CSS Examples</i></b> .....	29

**Color**

**Hex(FA9258)**

# Conversions

## Conversions Part 1

Format	Color
Hex	FA9258
RGB	250, 146, 88
RGB Percent	98%, 57%, 35%
CMY	0.0196, 0.4275, 0.6549
CMYK	0.00, 0.42, 0.65, 0.02
HSL	21°, 94%, 66%
HSV	21°, 65%, 98%
XYZ	51.4647, 41.5863, 14.5470
YIQ	170.4840, 80.6020, 4.0100

# Conversions

## Conversions Part 2

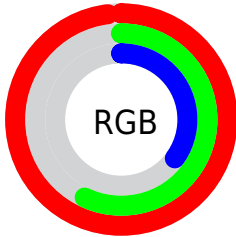
Format	Color
R <sub>Y</sub> B	250, 178, 88
Decimal	16421464
CIE Lab	70.58, 34.32, 47.04
CIE LCh	71, 58.230, 53.886
Yxy	41.5863, 0.4783, 0.3865
Android (android.graphics.Color)	4294611544 (0xFFFA9258)
YUV	170.4840, -40.6646, 69.7355
Hunter-Lab	64.4875, 29.6001, 31.7667

# Details

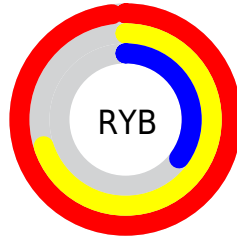
The Hex color **FA9258** is a light color, and the websafe version is hex **FF9966**, and the color name is **plum-dyed (umezome)**. The color can be described as light muted orange. A complement of this color would be **58C0FA**, and the grayscale version is **ABABAB**.

A 20% lighter version of the original color is **FFC98C**, and **BC5E27** is the 20% darker color. If you saturate the color by 10%, you get **FA823F**, and if you desaturate by 10%, it is **FAA271**.

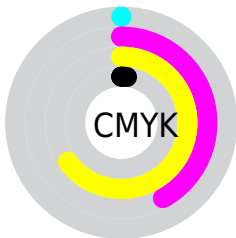
# Distribution



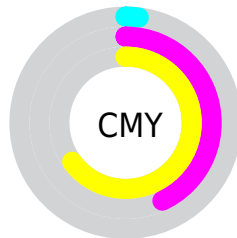
- Red (98%)
- Green (57%)
- Blue (35%)



- Red (98%)
- Yellow (70%)
- Blue (35%)



- Cyan (0%)
- Magenta (42%)
- Yellow (65%)
- Black (2%)



- Cyan (2%)
- Magenta (43%)
- Yellow (65%)

# Brightness & Saturation Gradients

These gradients show how the Hex color FA9258 changes by changing the brightness by 10 percent. The first figure shows a shift by +10% for each color and the second figure -10%.

Similar to the brightness gradients but the following saturation gradients show a change of the Hex color FA9258 by changing the saturation by 10% instead.



 FA9258

 FA9258

FFFFFF

 DB783F

 FFC98C

 BC5E27

 FFE5A6

 9E450D

 FFFFC2

 812D00

 FFFFDE

 641300

 FFFFFB

 470000

 2F0001

 000000

 FA9258

 FA9258

 FA823F

 FAA271

 FA7226

 FAB28A

 FA620D

 FAC2A3

 FA5A00

 FAD2BC

 FAE2D5

 FAF2EE

 FAFFFF

# Harmonies

## Analogous

The Analogous color harmony consists of three colors that are next to each other on the color wheel.



FF8185



FA9258



D3A63E

# Triad

The Triadic color harmony groups three colors that are evenly spaced from another and form a triangle on the color wheel.



FA9258



00C6A0



9DA3FF

# Complementary

The Complementary color scheme is a pair of colors which are on the opposite of each other on the color wheel.



FA9258



58C0FA

# Split Complementary

Split-complementary colors differ from the complementary color scheme. The scheme consists of three colors, the original color and two neighbors of the complement color.



00B6FF



FA9258



00C7D6

# Square

The Square scheme is like the rectangle color scheme, but the four colors are evenly spaced on the color wheel.



FA9258



5EC16B



00C1FF



E38DEC

# Rectangle

The Rectangle color scheme consists of four colors that form a rectangle on the color wheel.



FA9258



B3B23F



00C1FF



7BAAFF



# Sweetspot

The Sweet Spot groups the original color and five complimentary colors.



FA9258



FFE0CF



FA58C1



806D62



000000



808080



# Same Dimension

The Same Dimension uses a secret algorithm to generate beautiful new colors.



FA9258



FF7F38



FAE258



7D7570



BD4400



3D1600



# Inverse Universe

The Inverse Universe completely reimagines the original color for something new.



58C0FA



38B8FF



5870FA



70787D



0079BD



00273D



# Previews

## White Background



This preview shows how the Hex color FA9258 looks on a white background.

## Color Contrast Check

Large Text (above 18pt) WCAG AA × Fail

Any Text WCAG AA × Fail

Large Text (above 18pt) WCAG AAA × Fail

Any Text WCAG AAA × Fail

# Black Background



## Color Contrast Check

Large Text (above 18pt) WCAG AA ✓ Pass

Any Text WCAG AA ✓ Pass

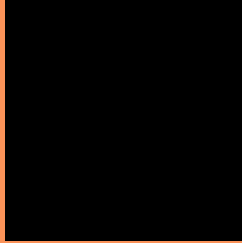
Large Text (above 18pt) WCAG AAA ✓ Pass

Any Text WCAG AAA ✓ Pass

If you want to check with other color combinations, try the [Color Contrast Checker](#).



## Hex FA9258 Background



This preview shows how black text looks on a background with the Hex color FA9258.

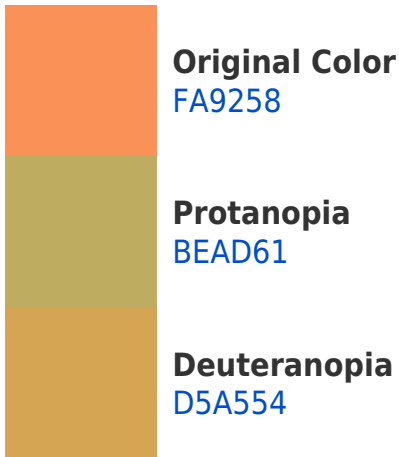


This preview shows how white text looks on a background with the Hex color FA9258.

# Color Blindness Simulation

Color vision deficiency is a very complex topic, and I could not describe the different causes any better than Wikipedia does, so if you want to learn more, you should check out their [article about color blindness](#).

## Dichromacy





**Tritanopia**  
FE8B95

# Trichromacy



**Original Color**  
FA9258



**Protanomaly**  
D4A35E



**Deuteranomaly**  
E29E55



**Tritanomaly**  
FD8E7F

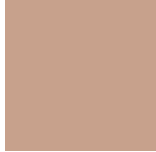
# Monochromacy



**Original Color**  
FA9258



**Achromatopsia**  
AAAAAA



**Achromatomaly**  
C7A18C

# CSS Examples

## Text

The CSS property to change the color of the text to Hex FA9258 is called "color". The color property can be set on classes, ids or directly on the HTML element.

This example shows how text in the color #FA9258 looks like.

```
.text, #text, p{  
    color:#FA9258  
}
```

If you want to add a text shadow in that color use the text-shadow property, you can generate a text shadow directly with our [CSS Text Shadow Generator](#).

Here you see how black text with a 4 pixel #FA9258 colored shadow looks like.

```
.shadow{ text-shadow: 4px 4px 2px #FA9258
}
```

## Border

The CSS property to change the border of an element to Hex FA9258 is called "border". The border property can be set on classes, ids or directly on the HTML element.

This example shows the color as border, it can be applied via the CSS property "border" or "border-color".

```
.border, #border, table{ border:4px solid
#FA9258 }
```

If only the border color should be changed use the property `border-color`.

```
.border{ border-color:#FA9258 }
```

If you want to add a box shadow in that color use:

Here you see how a box with a 4 pixel #FA9258 colored shadow looks like.

```
.boxshadow{ -moz-box-shadow:4px 4px 4px  
4px #FA9258; -webkit-box-shadow:4px 4px  
4px 4px #FA9258; box-shadow:4px 4px 4px  
4px #FA9258 }
```

# Background

The CSS property to change the background color of an element to Hex FA9258 is called "background". The background property can be set on classes, ids or directly on the HTML element.

```
.background, #background, body{  
background:#FA9258 }
```

If only the background color should be changed can be used:

```
.background{ background-color:#FA9258 }
```

This example shows the color as background, it is applied via the CSS property "background".

To optimize and compress your CSS code, you can use our [online CSS compressor and optimizer](#) based on csstidy. If you want to create a linear or radial gradient as background or border, check our [CSS Gradient Generator](#).



Hey! You found this booklet interesting? Support Converting Colors with the new Membership Option!

The pro membership hides all ads, plus gives you double the colors in the color bucket, and more awesome pro features!

**[Learn more, Memberships starting at \\$2.50/m!](#)**

**Follow me  
on Twitter!**

@ConvertingColor