

Converting Colors

Hex(FAADA4)

Have a look what the booklet for
Hex(FAADA4) contains.

Hex(FAADA4)	3
<i>Conversions</i>	4
<i>Details</i>	6
<i>Harmonies</i>	11
<i>Previews</i>	23
<i>Color Blindness Simulation</i>	26
<i>CSS Examples</i>	29

Color

Hex(FAADA4)

Conversions

Conversions Part 1

Format	Color
Hex	FAADA4
RGB	250, 173, 164
RGB Percent	98%, 68%, 64%
CMY	0.0196, 0.3216, 0.3569
CMYK	0.00, 0.31, 0.34, 0.02
HSL	6°, 90%, 81%
HSV	6°, 34%, 98%
XYZ	61.0688, 52.8915, 42.1124
YIQ	194.9970, 48.7810, 13.5250

Conversions

Conversions Part 2

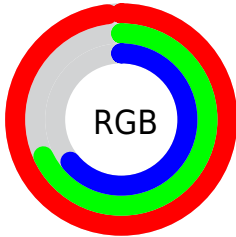
Format	Color
RYB	250, 174, 164
Decimal	16428452
CIELab	77.81, 27.09, 16.02
CIELCh	78, 31.477, 30.604
Yxy	52.8915, 0.3913, 0.3389
Android (android.graphics.Color)	4294618532 (0xFFFAADA4)
YUV	194.9970, -15.2815, 48.2376
Hunter-Lab	72.7265, 22.6158, 16.5766

Details

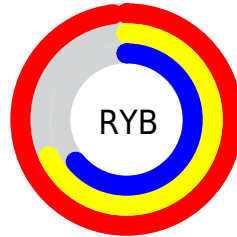
The Hex color **FAADA4** is a light color, and the websafe version is hex **FF9999**. A complement of this color would be **A4F1FA**, and the grayscale version is **C3C3C3**.

A 20% lighter version of the original color is **FFE5DB**, and **C07870** is the 20% darker color. If you saturate the color by 10%, you get **FA978B**, and if you desaturate by 10%, it is **FAC3BD**.

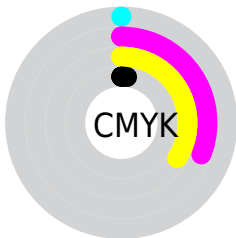
Distribution



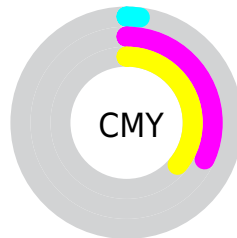
- Red (98%)
- Green (68%)
- Blue (64%)



- Red (98%)
- Yellow (68%)
- Blue (64%)



- Cyan (0%)
- Magenta (31%)
- Yellow (34%)
- Black (2%)



- Cyan (2%)
- Magenta (32%)
- Yellow (36%)

Brightness & Saturation Gradients

These gradients show how the Hex color FAADA4 changes by changing the brightness by 10 percent. The first figure shows a shift by +10% for each color and the second figure -10%.

Similar to the brightness gradients but the following saturation gradients show a change of the Hex color FAADA4 by changing the saturation by 10% instead.

 FAADA4

FFFFFF

 FFE5DB

 FFFFF7

 FAADA4

 DD928A

 C07870

 A35F58

 874640

 6C2F2A

 521716

 390000

 1F0001

 000000

 FAADA4

 FAADA4

 FA978B

 FAC3BD

 FA8072

 FADAD6

 FA6A59

 FAF0EF

 FA5340

 FAFFFF

 FA3D27

 FA270E

 FA1A00

Harmonies

Analogous

The Analogous color harmony consists of three colors that are next to each other on the color wheel.



F8ABC1



FAADA4



EDB58E

Triad

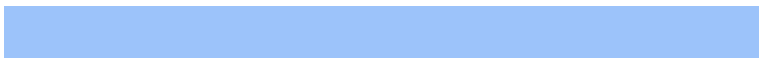
The Triadic color harmony groups three colors that are evenly spaced from another and form a triangle on the color wheel.



FAADA4



94CEA3



9CC3FA

Complementary

The Complementary color scheme is a pair of colors which are on the opposite of each other on the color wheel.



FAADA4



A4F1FA

Split Complementary

Split-complementary colors differ from the complementary color scheme. The scheme consists of three colors, the original color and two neighbors of the complement color.



75CBF2



FAADA4



74D1C0

Square

The Square scheme is like the rectangle color scheme, but the four colors are evenly spaced on the color wheel.



FAADA4



B5C88D



65D0DD



C5B9F3

Rectangle

The Rectangle color scheme consists of four colors that form a rectangle on the color wheel.



FAADA4



DEBB87



65D0DD



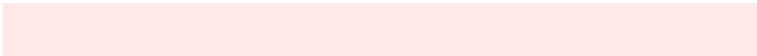
8DC6F9

Sweetspot

The Sweet Spot groups the original color and five complimentary colors.



FAADA4



FFE8E6



FAA4F1



807270



000000



808080

Same Dimension

The Same Dimension uses a secret algorithm to generate beautiful new colors.



FAADA4



FFA196



FAD8A4



7D7270



BD1400



3D0600

Inverse Universe

The Inverse Universe completely reimagines the original color for something new.



A4F1FA



96F4FF



A4C6FA



707C7D



00A9BD



00373D

Previews

White Background



This preview shows how the Hex color FAADA4 looks on a white background.

Color Contrast Check

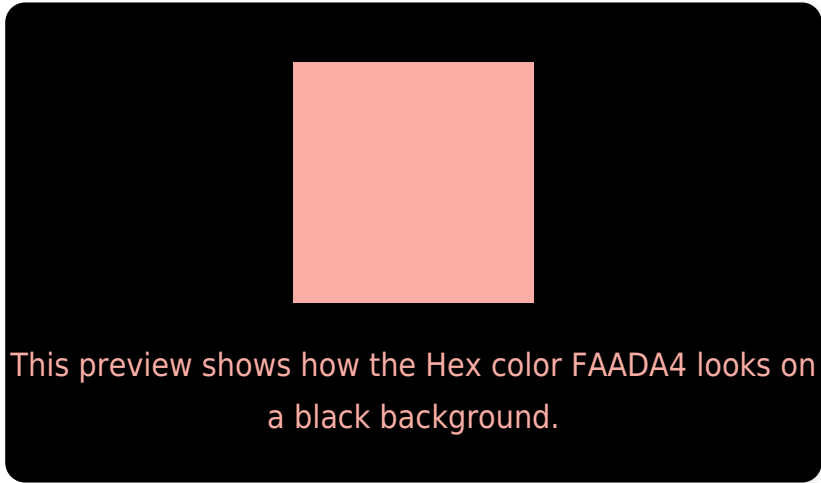
Large Text (above 18pt) WCAG AA × Fail

Any Text WCAG AA × Fail

Large Text (above 18pt) WCAG AAA × Fail

Any Text WCAG AAA × Fail

Black Background



Color Contrast Check

Large Text (above 18pt) WCAG AA ✓ Pass

Any Text WCAG AA ✓ Pass

Large Text (above 18pt) WCAG AAA ✓ Pass

Any Text WCAG AAA ✓ Pass

If you want to check with other color combinations, try the [Color Contrast Checker](#).

Hex FAADA4 Background



This preview shows how black text looks on a background with the Hex color FAADA4.

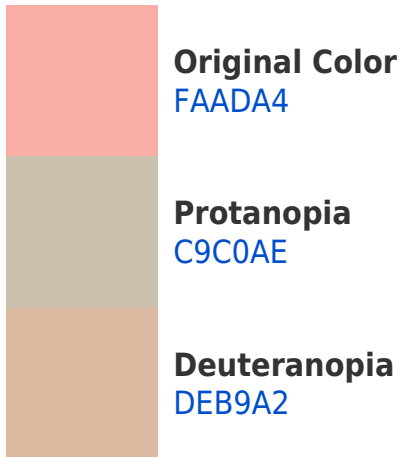


This preview shows how white text looks on a background with the Hex color FAADA4.

Color Blindness Simulation

Color vision deficiency is a very complex topic, and I could not describe the different causes any better than Wikipedia does, so if you want to learn more, you should check out their [article about color blindness](#).

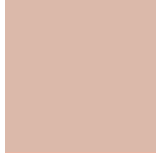
Dichromacy



Trichromacy



Original Color
FAADA4



Protanomaly
DBB9AA



Deuteranomaly
E8B5A3

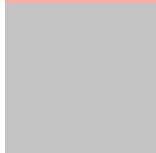


Tritanomaly
FBABB0

Monochromacy



Original Color
FAADA4



Achromatopsia
C3C3C3



Achromatomaly
D7BBB8

CSS Examples

Text

The CSS property to change the color of the text to Hex FAADA4 is called "color". The color property can be set on classes, ids or directly on the HTML element.

This example shows how text in the color #FAADA4 looks like.

```
.text, #text, p{  
  color:#FAADA4  
}
```

If you want to add a text shadow in that color use the text-shadow property, you can generate a text shadow directly with our [CSS Text Shadow Generator](#).

Here you see how black text with a 4 pixel #FAADA4 colored shadow looks like.

```
.shadow{ text-shadow: 4px 4px 2px #FAADA4
}
```

Border

The CSS property to change the border of an element to Hex FAADA4 is called "border". The border property can be set on classes, ids or directly on the HTML element.

This example shows the color as border, it can be applied via the CSS property "border" or "border-color".

```
.border, #border, table{ border:4px solid
#FAADA4 }
```

If only the border color should be changed use the property `border-color`.

```
.border{ border-color:#FAADA4 }
```

If you want to add a box shadow in that color use:

Here you see how a box with a 4 pixel #FAADA4 colored shadow looks like.

```
.boxshadow{ -moz-box-shadow:4px 4px 4px  
4px #FAADA4; -webkit-box-shadow:4px 4px  
4px 4px #FAADA4; box-shadow:4px 4px 4px  
4px #FAADA4 }
```

Background

The CSS property to change the background color of an element to Hex FAADA4 is called "background". The background property can be set on classes, ids or directly on the HTML element.

```
.background, #background, body{  
background:#FAADA4 }
```

If only the background color should be changed can be used:

```
.background{ background-color:#FAADA4 }
```

This example shows the color as background, it is applied via the CSS property "background".

To optimize and compress your CSS code, you can use our [online CSS compressor and optimizer](#) based on csstidy. If you want to create a linear or radial gradient as background or border, check our [CSS Gradient Generator](#).

Hey! You found this booklet interesting? Support Converting Colors with the new Membership Option!

The pro membership hides all ads, plus gives you double the colors in the color bucket, and more awesome pro features!

[Learn more, Memberships starting at \\$2.50/m!](#)

**Follow me
on Twitter!**

@ConvertingColor