

# Converting Colors

Hex(FAAFA8)

Have a look what the booklet for  
Hex(FAAFA8) contains.

<b>Hex(FAAFA8)</b> .....	3
<i><b>Conversions</b></i> .....	4
<i><b>Details</b></i> .....	6
<i><b>Harmonies</b></i> .....	11
<i><b>Previews</b></i> .....	23
<i><b>Color Blindness Simulation</b></i> .....	26
<i><b>CSS Examples</b></i> .....	29

# **Color**

**Hex(FAAFA8)**

# Conversions

## Conversions Part 1

Format	Color
Hex	FAAFA8
RGB	250, 175, 168
RGB Percent	98%, 69%, 66%
CMY	0.0196, 0.3137, 0.3412
CMYK	0.00, 0.30, 0.33, 0.02
HSL	5°, 89%, 82%
HSV	5°, 33%, 98%
XYZ	61.8222, 53.8111, 44.1740
YIQ	196.6270, 46.9470, 13.7230

# Conversions

## Conversions Part 2

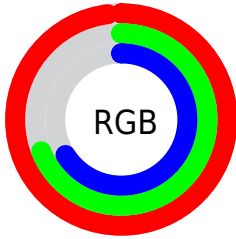
Format	Color
R <sub>Y</sub> B	250, 176, 168
Decimal	16428968
CIE Lab	78.35, 26.53, 14.62
CIE LCh	78, 30.290, 28.853
Yxy	53.8111, 0.3869, 0.3367
Android (android.graphics.Color)	4294619048 (0xFFFAAFA8)
YUV	196.6270, -14.1131, 46.8081
Hunter-Lab	73.3560, 22.0612, 15.6456

# Details

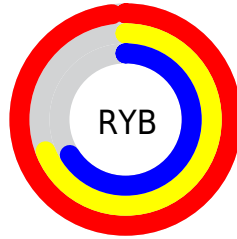
The Hex color **FAAFA8** is a light color, and the websafe version is hex **FF9999**. A complement of this color would be **A8F3FA**, and the grayscale version is **C5C5C5**.

A 20% lighter version of the original color is **FFE7DF**, and **C07A74** is the 20% darker color. If you saturate the color by 10%, you get **FA988F**, and if you desaturate by 10%, it is **FAC6C1**.

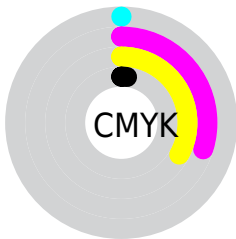
# Distribution



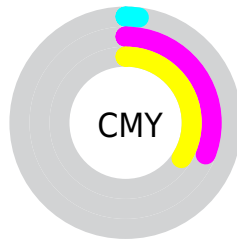
- Red (98%)
- Green (69%)
- Blue (66%)



- Red (98%)
- Yellow (69%)
- Blue (66%)



- Cyan (0%)
- Magenta (30%)
- Yellow (33%)
- Black (2%)



- Cyan (2%)
- Magenta (31%)
- Yellow (34%)

# Brightness & Saturation Gradients

These gradients show how the Hex color `FAAFA8` changes by changing the brightness by 10 percent. The first figure shows a shift by +10% for each color and the second figure -10%.

Similar to the brightness gradients but the following saturation gradients show a change of the Hex color `FAAFA8` by changing the saturation by 10% instead.



 FAAFA8

 FAAFA8

FFFFFF

 DD948E

 FFE7DF

 C07A74

FFFFFFC

 A3615B

 884844

 6D312E

 521919

 3A0200

 210001

 000000

 #FAAFA8

 #FAAFA8

 #FA988F

 #FAC6C1

 #FA8176

 #FADDDA

 #FA6A5D

 #FAF4F3

 #FA5444

 #FAFFFF

 #FA3D2B

 #FA2612

 #FA1500

# Harmonies

## Analogous

The Analogous color harmony consists of three colors that are next to each other on the color wheel.



F7ADC4



FAAFA8



EEB693

# Triad

The Triadic color harmony groups three colors that are evenly spaced from another and form a triangle on the color wheel.



FAAFA8



99CFA4



9DC5FA

# Complementary

The Complementary color scheme is a pair of colors which are on the opposite of each other on the color wheel.



FAAFA8



A8F3FA

# Split Complementary

Split-complementary colors differ from the complementary color scheme. The scheme consists of three colors, the original color and two neighbors of the complement color.



79CCF1



FAAFA8



7BD1C0

# Square

The Square scheme is like the rectangle color scheme, but the four colors are evenly spaced on the color wheel.



FAAFA8



B9C890



6BD1DC



C5BBF3

# Rectangle

The Rectangle color scheme consists of four colors that form a rectangle on the color wheel.



FAAFA8



E0BC8B



6BD1DC



8FC8F8

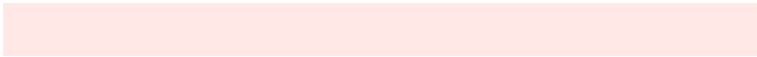


# Sweetspot

The Sweet Spot groups the original color and five complimentary colors.



FAAFA8



FFE8E6



FAA8F3



807270



000000



808080



# Same Dimension

The Same Dimension uses a secret algorithm to generate beautiful new colors.



FAAFA8



FFA49C



FAD8A8



7D7270



BD1000



3D0500



# Inverse Universe

The Inverse Universe completely reimagines the original color for something new.



A8F3FA



9CF7FF



A8CAFA



707C7D



00ADB8



00383D



# Previews

## White Background



This preview shows how the Hex color #FAAFA8 looks on a white background.

## Color Contrast Check

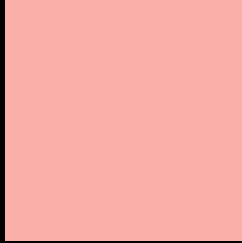
Large Text (above 18pt) WCAG AA × Fail

Any Text WCAG AA × Fail

Large Text (above 18pt) WCAG AAA × Fail

Any Text WCAG AAA × Fail

# Black Background



This preview shows how the Hex color #FAAFA8 looks on a black background.

## Color Contrast Check

Large Text (above 18pt) WCAG AA ✓ Pass

Any Text WCAG AA ✓ Pass

Large Text (above 18pt) WCAG AAA ✓ Pass

Any Text WCAG AAA ✓ Pass

If you want to check with other color combinations, try the [Color Contrast Checker](#).



## Hex FAAFA8 Background



This preview shows how black text looks on a background with the Hex color FAAFA8.

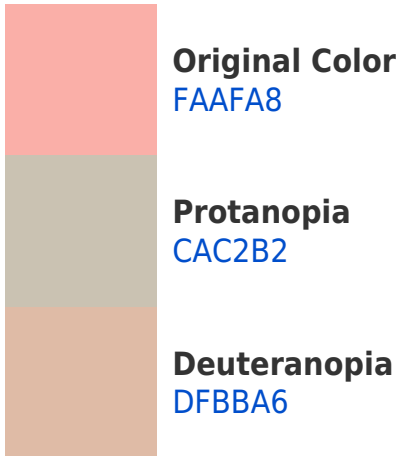


This preview shows how white text looks on a background with the Hex color FAAFA8.

# Color Blindness Simulation

Color vision deficiency is a very complex topic, and I could not describe the different causes any better than Wikipedia does, so if you want to learn more, you should check out their [article about color blindness](#).

## Dichromacy



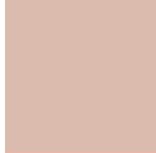


# Trichromacy



**Original Color**

FAAFA8



**Protanomaly**

DBBBAE



**Deuteranomaly**

E9B7A7



**Tritanomaly**

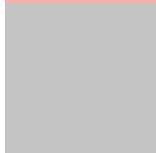
FBADB3

# Monochromacy



**Original Color**

FAAFA8



**Achromatopsia**

C5C5C5



**Achromatomaly**

D8BDBA

# CSS Examples

## Text

The CSS property to change the color of the text to Hex FAAFA8 is called "color". The color property can be set on classes, ids or directly on the HTML element.

This example shows how text in the color #FAAFA8 looks like.

```
.text, #text, p{  
  color:#FAAFA8  
}
```

If you want to add a text shadow in that color use the text-shadow property, you can generate a text shadow directly with our [CSS Text Shadow Generator](#).

Here you see how black text with a 4 pixel #FAAFA8 colored shadow looks like.

```
.shadow{ text-shadow: 4px 4px 2px #FAAFA8 }  
}
```

## Border

The CSS property to change the border of an element to Hex FAAFA8 is called "border". The border property can be set on classes, ids or directly on the HTML element.

This example shows the color as border, it can be applied via the CSS property "border" or "border-color".

```
.border, #border, table{ border:4px solid #FAAFA8 }  
}
```

If only the border color should be changed use the property `border-color`.

```
.border{ border-color:#FAAFA8 }
```

If you want to add a box shadow in that color use:

Here you see how a box with a 4 pixel #FAAFA8 colored shadow looks like.

```
.boxshadow{ -moz-box-shadow:4px 4px 4px  
4px #FAAFA8; -webkit-box-shadow:4px 4px  
4px 4px #FAAFA8; box-shadow:4px 4px 4px  
4px #FAAFA8 }
```

# Background

The CSS property to change the background color of an element to Hex FFAAFA8 is called "background". The background property can be set on classes, ids or directly on the HTML element.

```
.background, #background, body{  
background:#FAAFA8 }
```

If only the background color should be changed can be used:

```
.background{ background-color:#FAAFA8 }
```

This example shows the color as background, it is applied via the CSS property "background".

To optimize and compress your CSS code, you can use our [online CSS compressor and optimizer](#) based on csstidy. If you want to create a linear or radial gradient as background or border, check our [CSS Gradient Generator](#).



Hey! You found this booklet interesting? Support Converting Colors with the new Membership Option!

The pro membership hides all ads, plus gives you double the colors in the color bucket, and more awesome pro features!

**[Learn more, Memberships starting at \\$2.50/m!](#)**

**Follow me  
on Twitter!**

@ConvertingColor