

# Converting Colors

Hex(FAB7AC)

Have a look what the booklet for  
Hex(FAB7AC) contains.

<b>Hex(FAB7AC)</b> .....	3
<i><b>Conversions</b></i> .....	4
<i><b>Details</b></i> .....	6
<i><b>Harmonies</b></i> .....	11
<i><b>Previews</b></i> .....	23
<i><b>Color Blindness Simulation</b></i> .....	26
<i><b>CSS Examples</b></i> .....	29

# **Color**

**Hex(FAB7AC)**

# Conversions

## Conversions Part 1

Format	Color
Hex	FAB7AC
RGB	250, 183, 172
RGB Percent	98%, 72%, 67%
CMY	0.0196, 0.2824, 0.3255
CMYK	0.00, 0.27, 0.31, 0.02
HSL	8°, 89%, 83%
HSV	8°, 31%, 98%
XYZ	63.8042, 57.1695, 46.7017
YIQ	201.7790, 43.4630, 10.7830

# Conversions

## Conversions Part 2

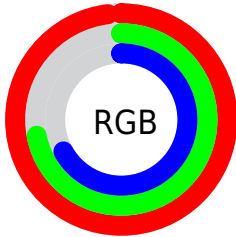
Format	Color
R <sub>Y</sub> B	250, 185, 172
Decimal	16431020
CIE Lab	80.27, 22.82, 15.16
CIE LCh	80, 27.397, 33.599
Yxy	57.1695, 0.3805, 0.3410
Android (android.graphics.Color)	4294621100 (0xFFFA7AC)
YUV	201.7790, -14.6810, 42.2898
Hunter-Lab	75.6105, 18.3094, 16.3062

# Details

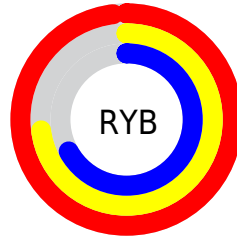
The Hex color **FAB7AC** is a light color, and the websafe version is hex **FFCCCC**. A complement of this color would be **ACEFFA**, and the grayscale version is **CACACA**.

A 20% lighter version of the original color is **FFEFE3**, and **C08278** is the 20% darker color. If you saturate the color by 10%, you get **FAA293**, and if you desaturate by 10%, it is **FACCC5**.

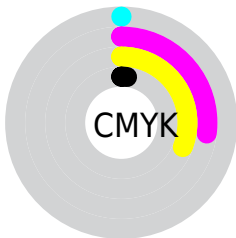
# Distribution



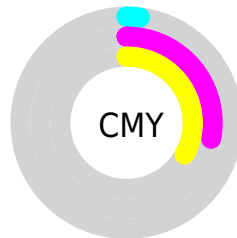
- Red (98%)
- Green (72%)
- Blue (67%)



- Red (98%)
- Yellow (73%)
- Blue (67%)



- Cyan (0%)
- Magenta (27%)
- Yellow (31%)
- Black (2%)



- Cyan (2%)
- Magenta (28%)
- Yellow (33%)

# Brightness & Saturation Gradients

These gradients show how the Hex color FAB7AC changes by changing the brightness by 10 percent. The first figure shows a shift by +10% for each color and the second figure -10%.

Similar to the brightness gradients but the following saturation gradients show a change of the Hex color FAB7AC by changing the saturation by 10% instead.



 FAB7AC

FFFFFF

 FFEFE3

 FAB7AC

 DD9C91

 C08278

 A4685F

 885047

 6E3831

 53211C

 3B0B02

 250001

 000000

 FAB7AC

 FAB7AC

 FAA293

 FACCC5

 FA8C7A

 FAE2DE

 FA7761

 FAF7F7

 FA6148

 FAFFFF

 FA4C2F

 FA3616

 FA2300

# Harmonies

## Analogous

The Analogous color harmony consists of three colors that are next to each other on the color wheel.



FAB5C5



FAB7AC



EDBE9A

# Triad

The Triadic color harmony groups three colors that are evenly spaced from another and form a triangle on the color wheel.



FAB7AC



9ED3B0



ACC8FA

# Complementary

The Complementary color scheme is a pair of colors which are on the opposite of each other on the color wheel.



FAB7AC



ACEFFA

# Split Complementary

Split-complementary colors differ from the complementary color scheme. The scheme consists of three colors, the original color and two neighbors of the complement color.



8CD0F4



FAB7AC



85D6C9

# Square

The Square scheme is like the rectangle color scheme, but the four colors are evenly spaced on the color wheel.



FAB7AC



BBCE9C



7DD4E2



CFC0F2

# Rectangle

The Rectangle color scheme consists of four colors that form a rectangle on the color wheel.



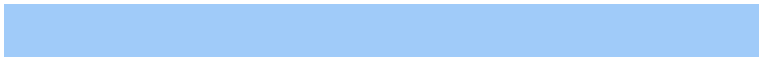
FAB7AC



DFC495



7DD4E2



A0CBF9



# Sweetspot

The Sweet Spot groups the original color and five complimentary colors.



FAB7AC



FFEBE8



FAACF0



807371



000000



808080



# Same Dimension

The Same Dimension uses a secret algorithm to generate beautiful new colors.



FAB7AC



FFAEA1



FADDAC



7D7270



BD1B00



3D0900

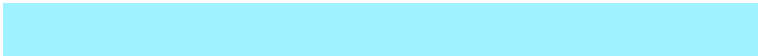


# Inverse Universe

The Inverse Universe completely reimagines the original color for something new.



ACEFFA



A1F2FF



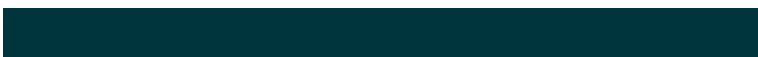
ACC9FA



707B7D



00A2BD

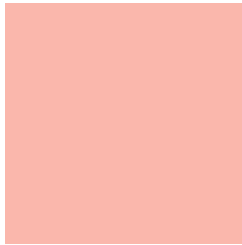


00353D



# Previews

## White Background



This preview shows how the Hex color FAB7AC looks on a white background.

## Color Contrast Check

Large Text (above 18pt) WCAG AA × Fail

Any Text WCAG AA × Fail

Large Text (above 18pt) WCAG AAA × Fail

Any Text WCAG AAA × Fail

# Black Background



This preview shows how the Hex color FAB7AC looks on a black background.

## Color Contrast Check

Large Text (above 18pt) WCAG AA ✓ Pass

Any Text WCAG AA ✓ Pass

Large Text (above 18pt) WCAG AAA ✓ Pass

Any Text WCAG AAA ✓ Pass

If you want to check with other color combinations, try the [Color Contrast Checker](#).



## Hex FAB7AC Background



This preview shows how black text looks on a background with the Hex color FAB7AC.

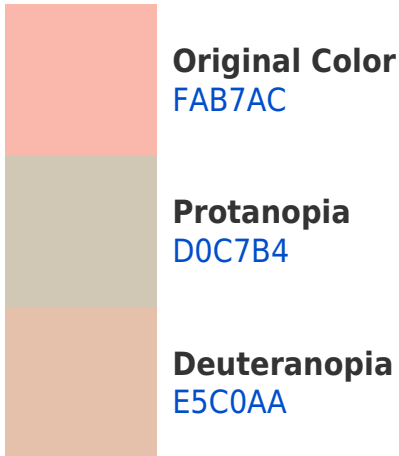


This preview shows how white text looks on a background with the Hex color FAB7AC.

# Color Blindness Simulation

Color vision deficiency is a very complex topic, and I could not describe the different causes any better than Wikipedia does, so if you want to learn more, you should check out their [article about color blindness](#).

## Dichromacy



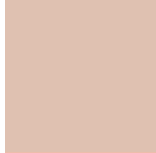


**Tritanopia**  
FCB4C2

# Trichromacy



**Original Color**  
FAB7AC



**Protanomaly**  
DFC1B1



**Deuteranomaly**  
EDBDAB

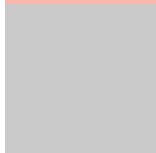


**Tritanomaly**  
FBB5BA

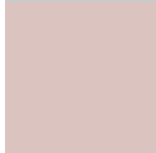
# Monochromacy



**Original Color**  
FAB7AC



**Achromatopsia**  
CACACA



**Achromatomaly**  
DBC3BF

# CSS Examples

## Text

The CSS property to change the color of the text to Hex FAB7AC is called "color". The color property can be set on classes, ids or directly on the HTML element.

This example shows how text in the color #FAB7AC looks like.

```
.text, #text, p{  
    color:#FAB7AC  
}
```

If you want to add a text shadow in that color use the text-shadow property, you can generate a text shadow directly with our [CSS Text Shadow Generator](#).

Here you see how black text with a 4 pixel #FAB7AC colored shadow looks like.

```
.shadow{ text-shadow: 4px 4px 2px #FAB7AC
}
```

## Border

The CSS property to change the border of an element to Hex FAB7AC is called "border". The border property can be set on classes, ids or directly on the HTML element.

This example shows the color as border, it can be applied via the CSS property "border" or "border-color".

```
.border, #border, table{ border:4px solid
#FAB7AC }
```

If only the border color should be changed use the property `border-color`.

```
.border{ border-color:#FAB7AC }
```

If you want to add a box shadow in that color use:

Here you see how a box with a 4 pixel #FAB7AC colored shadow looks like.

```
.boxshadow{ -moz-box-shadow:4px 4px 4px  
4px #FAB7AC; -webkit-box-shadow:4px 4px  
4px 4px #FAB7AC; box-shadow:4px 4px 4px  
4px #FAB7AC }
```

# Background

The CSS property to change the background color of an element to Hex FAB7AC is called "background". The background property can be set on classes, ids or directly on the HTML element.

```
.background, #background, body{  
background:#FAB7AC }
```

If only the background color should be changed can be used:

```
.background{ background-color:#FAB7AC }
```

This example shows the color as background, it is applied via the CSS property "background".

To optimize and compress your CSS code, you can use our [online CSS compressor and optimizer](#) based on csstidy. If you want to create a linear or radial gradient as background or border, check our [CSS Gradient Generator](#).



Hey! You found this booklet interesting? Support Converting Colors with the new Membership Option!

The pro membership hides all ads, plus gives you double the colors in the color bucket, and more awesome pro features!

**[Learn more, Memberships starting at \\$2.50/m!](#)**

**Follow me  
on Twitter!**

@ConvertingColor