

Converting Colors

Hex(FAC3D3)

Have a look what the booklet for
Hex(FAC3D3) contains.

Hex(FAC3D3)	3
<i>Conversions</i>	4
<i>Details</i>	6
<i>Harmonies</i>	11
<i>Previews</i>	23
<i>Color Blindness Simulation</i>	26
<i>CSS Examples</i>	29

Color

Hex(FAC3D3)

Conversions

Conversions Part 1

Format	Color
Hex	FAC3D3
RGB	250, 195, 211
RGB Percent	98%, 76%, 83%
CMY	0.0196, 0.2353, 0.1725
CMYK	0.00, 0.22, 0.16, 0.02
HSL	343°, 85%, 87%
HSV	343°, 22%, 98%
XYZ	70.6973, 64.0574, 70.2662
YIQ	213.2690, 27.6440, 16.6360

Conversions

Conversions Part 2

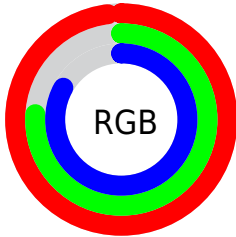
Format	Color
R_{YB}	250, 195, 211
Decimal	16434131
CIE _{Lab}	84.00, 22.01, -0.43
CIE _{LCh}	84, 22.016, 358.891
Yxy	64.0574, 0.3448, 0.3124
Android (android.graphics.Color)	4294624211 (0xFF _{FAC3D3})
YUV	213.2690, -1.1186, 32.2131
Hunter-Lab	80.0358, 17.6100, 3.9724

Details

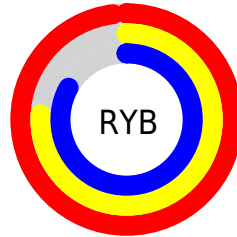
The Hex color **FAC3D3** is a light color, and the websafe version is hex **FFCCCC**. A complement of this color would be **C3FAEA**, and the grayscale version is **D5D5D5**.

A 20% lighter version of the original color is **FFFCFF**, and **C18D9D** is the 20% darker color. If you saturate the color by 10%, you get **FAAAC1**, and if you desaturate by 10%, it is **FADCE5**.

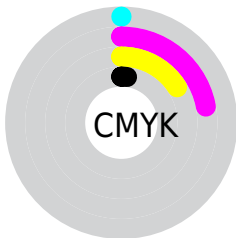
Distribution



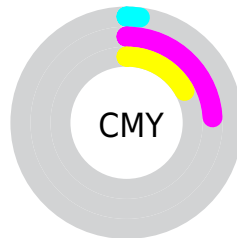
- Red (98%)
- Green (76%)
- Blue (83%)



- Red (98%)
- Yellow (76%)
- Blue (83%)



- Cyan (0%)
- Magenta (22%)
- Yellow (16%)
- Black (2%)



- Cyan (2%)
- Magenta (24%)
- Yellow (17%)

Brightness & Saturation Gradients

These gradients show how the Hex color FAC3D3 changes by changing the brightness by 10 percent. The first figure shows a shift by +10% for each color and the second figure -10%.

Similar to the brightness gradients but the following saturation gradients show a change of the Hex color FAC3D3 by changing the saturation by 10% instead.

 FAC3D3

 FAC3D3

FFFFFF

 DDA8B7

 FFFCFF

 C18D9D

 A57383

 8A5A69

 704251

 572B3A

 3F1525

 290010

 000000

 FAC3D3

 FAC3D3

 FAAAC1

 FADCE5

 FA91B0

 FAF5F6

 FA789E

 FAFFFF

 FA5F8C

 FA467A

 FA2D69

 FA1457

 FA0049

Harmonies

Analogous

The Analogous color harmony consists of three colors that are next to each other on the color wheel.



ECC6E7



FAC3D3



FCC4BE

Triad

The Triadic color harmony groups three colors that are evenly spaced from another and form a triangle on the color wheel.



FAC3D3



CCD6AD



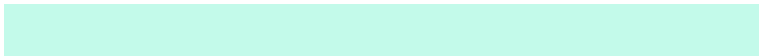
A2D9F4

Complementary

The Complementary color scheme is a pair of colors which are on the opposite of each other on the color wheel.



FAC3D3



C3FAEA

Split Complementary

Split-complementary colors differ from the complementary color scheme. The scheme consists of three colors, the original color and two neighbors of the complement color.



99DDE5



FAC3D3



B4DBBB

Square

The Square scheme is like the rectangle color scheme, but the four colors are evenly spaced on the color wheel.



FAC3D3



E2D0A8



A1DDD0



B9D4FB

Rectangle

The Rectangle color scheme consists of four colors that form a rectangle on the color wheel.



FAC3D3



F8C7B3



A1DDD0



9DDBF0

Sweetspot

The Sweet Spot groups the original color and five complimentary colors.



FAC3D3



FFEDF2



EAC3FA



807578



000000



808080

Same Dimension

The Same Dimension uses a secret algorithm to generate beautiful new colors.



FAC3D3



FFBDD0



FACEC3



7D7074



BD0037



3D0012

Inverse Universe

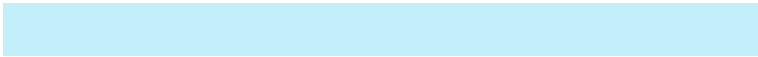
The Inverse Universe completely reimagines the original color for something new.



FAC3D3



FFBDD0



C3EFFA



7D7074



BD0037



3D0012

Previews

White Background



This preview shows how the Hex color FAC3D3 looks on a white background.

Color Contrast Check

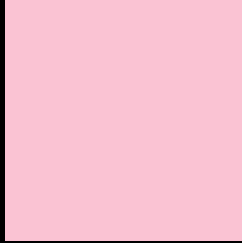
Large Text (above 18pt) WCAG AA × Fail

Any Text WCAG AA × Fail

Large Text (above 18pt) WCAG AAA × Fail

Any Text WCAG AAA × Fail

Black Background



This preview shows how the Hex color FAC3D3 looks on a black background.

Color Contrast Check

Large Text (above 18pt) WCAG AA ✓ Pass

Any Text WCAG AA ✓ Pass

Large Text (above 18pt) WCAG AAA ✓ Pass

Any Text WCAG AAA ✓ Pass

If you want to check with other color combinations, try the [Color Contrast Checker](#).

Hex FAC3D3 Background



This preview shows how black text looks on a background with the Hex color FAC3D3.

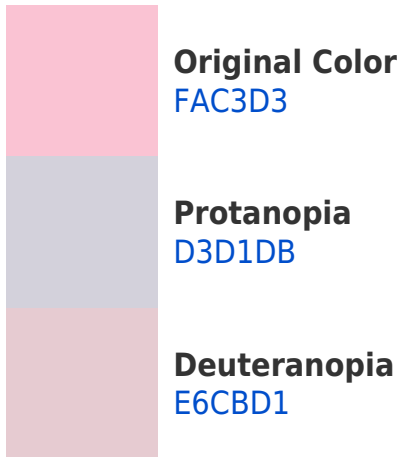


This preview shows how white text looks on a background with the Hex color FAC3D3.

Color Blindness Simulation

Color vision deficiency is a very complex topic, and I could not describe the different causes any better than Wikipedia does, so if you want to learn more, you should check out their [article about color blindness](#).

Dichromacy



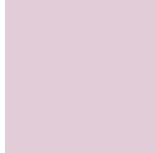


Tritanopia
FAC3D2

Trichromacy



Original Color
FAC3D3



Protanomaly
E1CCD8



Deuteranomaly
EDC8D2

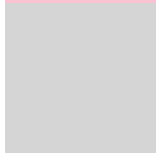


Tritanomaly
FAC3D2

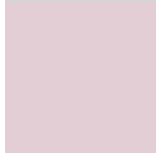
Monochromacy



Original Color
FAC3D3



Achromatopsia
D5D5D5



Achromatomaly
E2CED4

CSS Examples

Text

The CSS property to change the color of the text to Hex FAC3D3 is called "color". The color property can be set on classes, ids or directly on the HTML element.

This example shows how text in the color #FAC3D3 looks like.

```
.text, #text, p{  
    color:#FAC3D3  
}
```

If you want to add a text shadow in that color use the text-shadow property, you can generate a text shadow directly with our [CSS Text Shadow Generator](#).

Here you see how black text with a 4 pixel #FAC3D3 colored shadow looks like.

```
.shadow{ text-shadow: 4px 4px 2px #FAC3D3
}
```

Border

The CSS property to change the border of an element to Hex FAC3D3 is called "border". The border property can be set on classes, ids or directly on the HTML element.

This example shows the color as border, it can be applied via the CSS property "border" or "border-color".

```
.border, #border, table{ border:4px solid
#FAC3D3 }
```

If only the border color should be changed use the property `border-color`.

```
.border{ border-color:#FAC3D3 }
```

If you want to add a box shadow in that color use:

Here you see how a box with a 4 pixel #FAC3D3 colored shadow looks like.

```
.boxshadow{ -moz-box-shadow:4px 4px 4px  
4px #FAC3D3; -webkit-box-shadow:4px 4px  
4px 4px #FAC3D3; box-shadow:4px 4px 4px  
4px #FAC3D3 }
```

Background

The CSS property to change the background color of an element to Hex FAC3D3 is called "background". The background property can be set on classes, ids or directly on the HTML element.

```
.background, #background, body{  
background:#FAC3D3 }
```

If only the background color should be changed can be used:

```
.background{ background-color:#FAC3D3 }
```

This example shows the color as background, it is applied via the CSS property "background".

To optimize and compress your CSS code, you can use our [online CSS compressor and optimizer](#) based on csstidy. If you want to create a linear or radial gradient as background or border, check our [CSS Gradient Generator](#).

Hey! You found this booklet interesting? Support Converting Colors with the new Membership Option!

The pro membership hides all ads, plus gives you double the colors in the color bucket, and more awesome pro features!

[Learn more, Memberships starting at \\$2.50/m!](#)

**Follow me
on Twitter!**

@ConvertingColor