

Converting Colors

Hex(FAD0DD)

Have a look what the booklet for
Hex(FAD0DD) contains.

Hex(FAD0DD)	3
<i>Conversions</i>	4
<i>Details</i>	6
<i>Harmonies</i>	11
<i>Previews</i>	23
<i>Color Blindness Simulation</i>	26
<i>CSS Examples</i>	29

Color

Hex(FAD0DD)

Conversions

Conversions Part 1

Format	Color
Hex	FAD0DD
RGB	250, 208, 221
RGB Percent	98%, 82%, 87%
CMY	0.0196, 0.1843, 0.1333
CMYK	0.00, 0.17, 0.12, 0.02
HSL	341°, 81%, 90%
HSV	341°, 17%, 98%
XYZ	75.0314, 70.6562, 78.0900
YIQ	222.0400, 20.8590, 12.9470

Conversions

Conversions Part 2

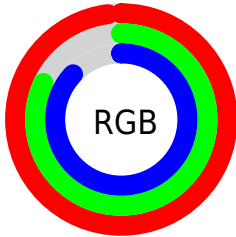
Format	Color
R _{YB}	250, 208, 221
Decimal	16437469
CIE Lab	87.32, 16.77, -0.89
CIE LCh	87, 16.791, 356.965
Yxy	70.6562, 0.3353, 0.3157
Android (android.graphics.Color)	4294627549 (0xFFFA0DD)
YUV	222.0400, -0.5127, 24.5209
Hunter-Lab	84.0572, 12.2329, 3.7591

Details

The Hex color **FAD0DD** is a light color, and the websafe version is hex **FFCCCC**. A complement of this color would be **D0FAED**, and the grayscale version is **DEDEDE**.

A 20% lighter version of the original color is **FFFFFF**, and **C199A6** is the 20% darker color. If you saturate the color by 10%, you get **FAB7CC**, and if you desaturate by 10%, it is **FAE9EE**.

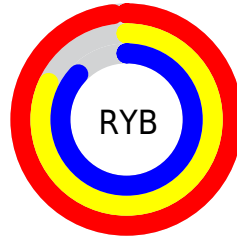
Distribution



Red (98%)

Green (82%)

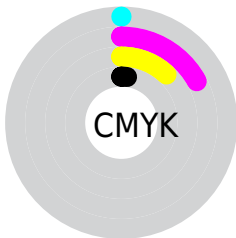
Blue (87%)



Red (98%)

Yellow (82%)

Blue (87%)

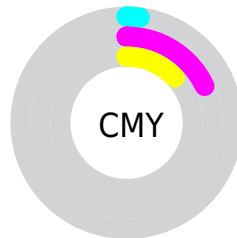


Cyan (0%)

Magenta (17%)

Yellow (12%)

Black (2%)



Cyan (2%)

Magenta (18%)

Yellow (13%)

Brightness & Saturation Gradients

These gradients show how the Hex color FAD0DD changes by changing the brightness by 10 percent. The first figure shows a shift by +10% for each color and the second figure -10%.

Similar to the brightness gradients but the following saturation gradients show a change of the Hex color FAD0DD by changing the saturation by 10% instead.

 FAD0DD

 FAD0DD

FFFFFF

 DDB4C1

 C199A6

 A67F8C

 8B6672

 714E5A

 583742

 40212C

 290C18

 0D0000

 FAD0DD

 FAD0DD

 FAB7CC

 FAE9EE

 FA9EBA

 FAFFFF

 FA85A9

 FA6C98

 FA5387

 FA3A75

 FA2164

 FA0853

 FA004D

Harmonies

Analogous

The Analogous color harmony consists of three colors that are next to each other on the color wheel.



EED3EC



FAD0DD



FDD1CD

Triad

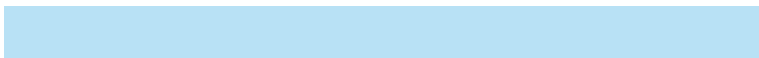
The Triadic color harmony groups three colors that are evenly spaced from another and form a triangle on the color wheel.



FAD0DD



D8DEBE



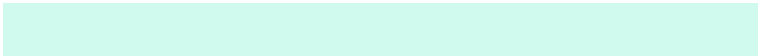
B8E1F5

Complementary

The Complementary color scheme is a pair of colors which are on the opposite of each other on the color wheel.



FAD0DD



D0FAED

Split Complementary

Split-complementary colors differ from the complementary color scheme. The scheme consists of three colors, the original color and two neighbors of the complement color.



B2E4E9



FAD0DD



C6E2C9

Square

The Square scheme is like the rectangle color scheme, but the four colors are evenly spaced on the color wheel.



FAD0DD



E9D9BB



B7E4D8



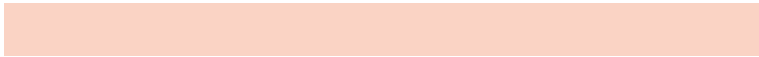
C8DDFA

Rectangle

The Rectangle color scheme consists of four colors that form a rectangle on the color wheel.



FAD0DD



FAD3C4



B7E4D8



B4E2F1

Sweetspot

The Sweet Spot groups the original color and five complimentary colors.



FAD0DD



FFF2F6



EDD0FA



80787A



000000



808080

Same Dimension

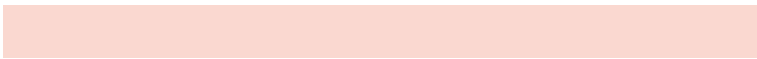
The Same Dimension uses a secret algorithm to generate beautiful new colors.



FAD0DD



FFCCDC



FAD8D0



7D7074



BD003A



3D0013

Inverse Universe

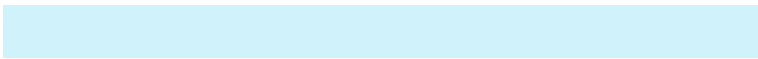
The Inverse Universe completely reimagines the original color for something new.



FAD0DD



FFCCDC



D0F2FA



7D7074



BD003A



3D0013

Previews

White Background



This preview shows how the Hex color FAD0DD looks on a white background.

Color Contrast Check

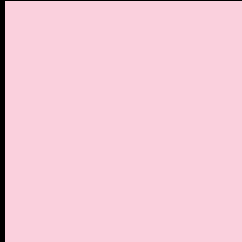
Large Text (above 18pt) WCAG AA × Fail

Any Text WCAG AA × Fail

Large Text (above 18pt) WCAG AAA × Fail

Any Text WCAG AAA × Fail

Black Background



This preview shows how the Hex color FAD0DD looks on a black background.

Color Contrast Check

Large Text (above 18pt) WCAG AA ✓ Pass

Any Text WCAG AA ✓ Pass

Large Text (above 18pt) WCAG AAA ✓ Pass

Any Text WCAG AAA ✓ Pass

If you want to check with other color combinations, try the [Color Contrast Checker](#).

Hex FAD0DD Background



This preview shows how black text looks on a background with the Hex color FAD0DD.

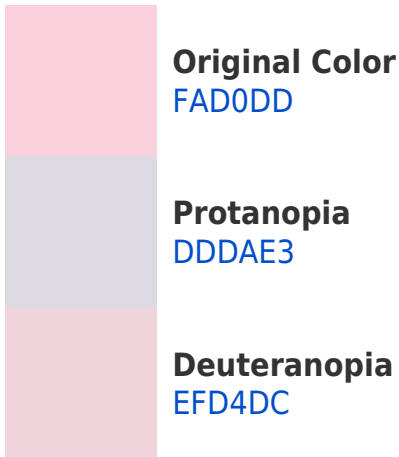


This preview shows how white text looks on a background with the Hex color FAD0DD.

Color Blindness Simulation

Color vision deficiency is a very complex topic, and I could not describe the different causes any better than Wikipedia does, so if you want to learn more, you should check out their [article about color blindness](#).

Dichromacy



Trichromacy



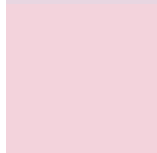
Original Color

FAD0DD



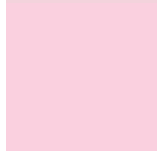
Protanomaly

E8D6E1



Deuteranomaly

F3D3DC



Tritanomaly

FAD0DF

Monochromacy



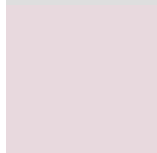
Original Color

FAD0DD



Achromatopsia

DEDEDE



Achromatomaly

E8D9DE

CSS Examples

Text

The CSS property to change the color of the text to Hex FAD0DD is called "color". The color property can be set on classes, ids or directly on the HTML element.

This example shows how text in the color #FAD0DD looks like.

```
.text, #text, p{  
    color:#FAD0DD  
}
```

If you want to add a text shadow in that color use the text-shadow property, you can generate a text shadow directly with our [CSS Text Shadow Generator](#).

Here you see how black text with a 4 pixel #FAD0DD colored shadow looks like.

```
.shadow{ text-shadow: 4px 4px 2px #FAD0DD
}
```

Border

The CSS property to change the border of an element to Hex FAD0DD is called "border". The border property can be set on classes, ids or directly on the HTML element.

This example shows the color as border, it can be applied via the CSS property "border" or "border-color".

```
.border, #border, table{ border:4px solid
#FAD0DD }
```

If only the border color should be changed use the property `border-color`.

```
.border{ border-color:#FAD0DD }
```

If you want to add a box shadow in that color use:

Here you see how a box with a 4 pixel #FAD0DD colored shadow looks like.

```
.boxshadow{ -moz-box-shadow:4px 4px 4px  
4px #FAD0DD; -webkit-box-shadow:4px 4px  
4px 4px #FAD0DD; box-shadow:4px 4px 4px  
4px #FAD0DD }
```

Background

The CSS property to change the background color of an element to Hex FAD0DD is called "background". The background property can be set on classes, ids or directly on the HTML element.

```
.background, #background, body{  
background:#FAD0DD }
```

If only the background color should be changed can be used:

```
.background{ background-color:#FAD0DD }
```

This example shows the color as background, it is applied via the CSS property "background".

To optimize and compress your CSS code, you can use our [online CSS compressor and optimizer](#) based on csstidy. If you want to create a linear or radial gradient as background or border, check our [CSS Gradient Generator](#).

Hey! You found this booklet interesting? Support Converting Colors with the new Membership Option!

The pro membership hides all ads, plus gives you double the colors in the color bucket, and more awesome pro features!

[Learn more, Memberships starting at \\$2.50/m!](#)

**Follow me
on Twitter!**

@ConvertingColor