

Converting Colors

Hex(FB2D65)

Have a look what the booklet for
Hex(FB2D65) contains.

Hex(FB2D65)	3
<i>Conversions</i>	4
<i>Details</i>	6
<i>Harmonies</i>	11
<i>Previews</i>	23
<i>Color Blindness Simulation</i>	26
<i>CSS Examples</i>	29

Color

Hex(FB2D65)

Conversions

Conversions Part 1

Format	Color
Hex	FB2D65
RGB	251, 45, 101
RGB Percent	98%, 18%, 40%
CMY	0.0157, 0.8235, 0.6039
CMYK	0.00, 0.82, 0.60, 0.02
HSL	344°, 96%, 58%
HSV	344°, 82%, 98%
XYZ	43.0710, 23.3256, 14.5441
YIQ	112.9780, 104.8000, 61.0880

Conversions

Conversions Part 2

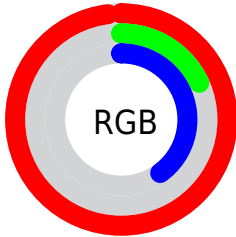
Format	Color
R_{YB}	251, 45, 101
Decimal	16461157
CIE _{Lab}	55.41, 76.26, 20.88
CIE _{LCh}	55, 79.069, 15.310
Yxy	23.3256, 0.5321, 0.2882
Android (android.graphics.Color)	4294651237 (0xFFFB2D65)
YUV	112.9780, -5.9052, 121.0453
Hunter-Lab	48.2966, 74.6678, 15.9529

Details

The Hex color **FB2D65** is a dark color, and the websafe version is hex **FF3366**. The color can be described as dark washed rose. A complement of this color would be **2DFBC3**, and the grayscale version is **717171**.

A 20% lighter version of the original color is **FF7198**, and **BB0037** is the 20% darker color. If you saturate the color by 10%, you get **FB1453**, and if you desaturate by 10%, it is **FB4677**.

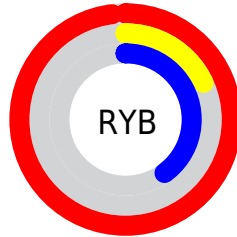
Distribution



Red (98%)

Green (18%)

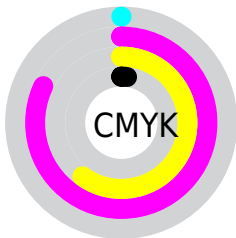
Blue (40%)



Red (98%)

Yellow (18%)

Blue (40%)

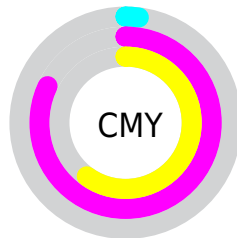


Cyan (0%)

Magenta (82%)

Yellow (60%)

Black (2%)



Cyan (2%)

Magenta (82%)

Yellow (60%)

Brightness & Saturation Gradients

These gradients show how the Hex color FB2D65 changes by changing the brightness by 10 percent. The first figure shows a shift by +10% for each color and the second figure -10%.

Similar to the brightness gradients but the following saturation gradients show a change of the Hex color FB2D65 by changing the saturation by 10% instead.

 FB2D65

 FB2D65

FFFFFF

 DB004D

 FF7198

 BB0037

 FF90B2

 9B0022

 FFADCE

 7C000D

 FFCBEA

 5D0003

 FFEAFF

 3E0003

 1A0001

 000000

 FB2D65

 FB2D65

 FB1453

 FB4677

 FB0044

 FB5F8A

 FB789C

 FB91AE

 FBABC0

 FBC4D3

 FBDDE5

 FBF6F7

 FBFFFF

Harmonies

Analogous

The Analogous color harmony consists of three colors that are next to each other on the color wheel.



EC35A9



FB2D65



E85322

Triad

The Triadic color harmony groups three colors that are evenly spaced from another and form a triangle on the color wheel.



FB2D65



1E9A0B



0096FF

Complementary

The Complementary color scheme is a pair of colors which are on the opposite of each other on the color wheel.



FB2D65



2DFBC3

Split Complementary

Split-complementary colors differ from the complementary color scheme. The scheme consists of three colors, the original color and two neighbors of the complement color.



00A0E6



FB2D65



00A05F

Square

The Square scheme is like the rectangle color scheme, but the four colors are evenly spaced on the color wheel.



FB2D65



808C00



00A2A7



0081FF

Rectangle

The Rectangle color scheme consists of four colors that form a rectangle on the color wheel.



FB2D65



CD6B00



00A2A7



009BFF

Sweetspot

The Sweet Spot groups the original color and five complimentary colors.



FB2D65



FFBFD1



C12DFB



805964



000000



808080

Same Dimension

The Same Dimension uses a secret algorithm to generate beautiful new colors.



FB2D65



FF0549



FB5A2D



7D7074



BD0033



3D0011

Inverse Universe

The Inverse Universe completely reimagines the original color for something new.



FB2D65



FF0549



2DCEFB



7D7074



BD0033



3D0011

Previews

White Background



This preview shows how the Hex color FB2D65 looks on a white background.

Color Contrast Check

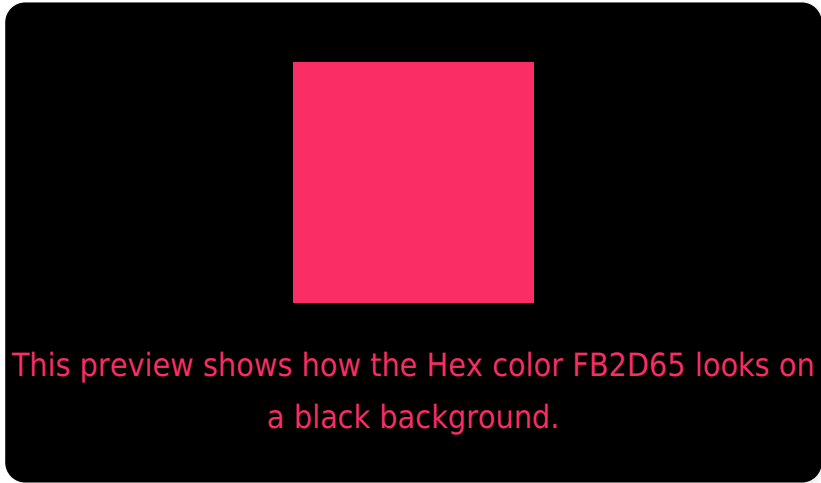
Large Text (above 18pt) WCAG AA ✓ Pass

Any Text WCAG AA ✗ Fail

Large Text (above 18pt) WCAG AAA ✗ Fail

Any Text WCAG AAA ✗ Fail

Black Background



Color Contrast Check

Large Text (above 18pt) WCAG AA ✓ Pass

Any Text WCAG AA ✓ Pass

Large Text (above 18pt) WCAG AAA ✓ Pass

Any Text WCAG AAA × Fail

If you want to check with other color combinations, try the [Color Contrast Checker](#).

Hex FB2D65 Background



This preview shows how black text looks on a background with the Hex color FB2D65.



This preview shows how white text looks on a background with the Hex color FB2D65.

Color Blindness Simulation

Color vision deficiency is a very complex topic, and I could not describe the different causes any better than Wikipedia does, so if you want to learn more, you should check out their [article about color blindness](#).

Dichromacy



Original Color
FB2D65

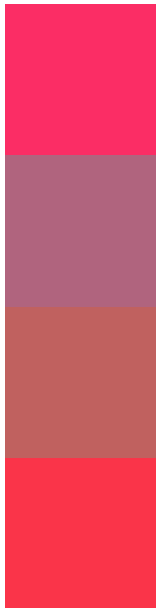
Protanopia
85848C

Deuteranopia
9F7F5B



Tritanopia
F93839

Trichromacy



Original Color
FB2D65

Protanomaly
B0647E

Deuteranomaly
C0615F

Tritanomaly
FA3449

Monochromacy



Original Color
FB2D65

Achromatopsia
717171

Achromatomaly
A3586D

CSS Examples

Text

The CSS property to change the color of the text to Hex FB2D65 is called "color". The color property can be set on classes, ids or directly on the HTML element.

This example shows how text in the color #FB2D65 looks like.

```
.text, #text, p{  
    color:#FB2D65  
}
```

If you want to add a text shadow in that color use the text-shadow property, you can generate a text shadow directly with our [CSS Text Shadow Generator](#).

Here you see how black text with a 4 pixel #FB2D65 colored shadow looks like.

```
.shadow{ text-shadow: 4px 4px 2px #FB2D65
}
```

Border

The CSS property to change the border of an element to Hex FB2D65 is called "border". The border property can be set on classes, ids or directly on the HTML element.

This example shows the color as border, it can be applied via the CSS property "border" or "border-color".

```
.border, #border, table{ border:4px solid
#FB2D65 }
```

If only the border color should be changed use the property `border-color`.

```
.border{ border-color:#FB2D65 }
```

If you want to add a box shadow in that color use:

Here you see how a box with a 4 pixel #FB2D65 colored shadow looks like.

```
.boxshadow{ -moz-box-shadow:4px 4px 4px  
4px #FB2D65; -webkit-box-shadow:4px 4px  
4px 4px #FB2D65; box-shadow:4px 4px 4px  
4px #FB2D65 }
```

Background

The CSS property to change the background color of an element to Hex FB2D65 is called "background". The background property can be set on classes, ids or directly on the HTML element.

```
.background, #background, body{  
background:#FB2D65 }
```

If only the background color should be changed can be used:

```
.background{ background-color:#FB2D65 }
```

This example shows the color as background, it is applied via the CSS property "background".

To optimize and compress your CSS code, you can use our [online CSS compressor and optimizer](#) based on csstidy. If you want to create a linear or radial gradient as background or border, check our [CSS Gradient Generator](#).

Hey! You found this booklet interesting? Support Converting Colors with the new Membership Option!

The pro membership hides all ads, plus gives you double the colors in the color bucket, and more awesome pro features!

[Learn more, Memberships starting at \\$2.50/m!](#)

**Follow me
on Twitter!**

@ConvertingColor