

Converting Colors

Hex(FB3D7C)

Have a look what the booklet for
Hex(FB3D7C) contains.

Hex(FB3D7C)	3
<i>Conversions</i>	4
<i>Details</i>	6
<i>Harmonies</i>	11
<i>Previews</i>	23
<i>Color Blindness Simulation</i>	26
<i>CSS Examples</i>	29

Color

Hex(FB3D7C)

Conversions

Conversions Part 1

Format	Color
Hex	FB3D7C
RGB	251, 61, 124
RGB Percent	98%, 24%, 49%
CMY	0.0157, 0.7608, 0.5137
CMYK	0.00, 0.76, 0.51, 0.02
HSL	340°, 96%, 61%
HSV	340°, 76%, 98%
XYZ	45.0905, 25.3020, 21.5760
YIQ	124.9920, 93.0170, 59.8730

Conversions

Conversions Part 2

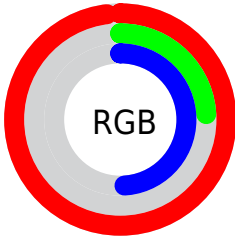
Format	Color
R_{YB}	251, 61, 124
Decimal	16465276
CIE _{Lab}	57.37, 73.72, 9.90
CIE _{LCh}	57, 74.377, 7.647
Yxy	25.3020, 0.4903, 0.2751
Android (android.graphics.Color)	4294655356 (0xFFFB3D7C)
YUV	124.9920, -0.4891, 110.5090
Hunter-Lab	50.3010, 71.9828, 9.7790

Details

The Hex color **FB3D7C** is a dark color, and the websafe version is hex **FF3366**. The color can be described as middle washed rose. A complement of this color would be **3DFBBC**, and the grayscale version is **7D7D7D**.

A 20% lighter version of the original color is **FF7CB0**, and **BC004C** is the 20% darker color. If you saturate the color by 10%, you get **FB246B**, and if you desaturate by 10%, it is **FB568D**.

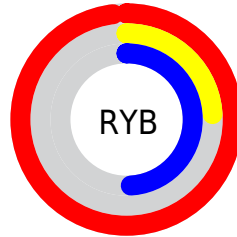
Distribution



Red (98%)

Green (24%)

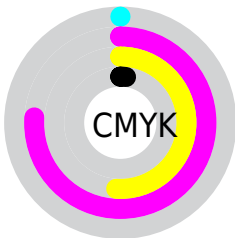
Blue (49%)



Red (98%)

Yellow (24%)

Blue (49%)

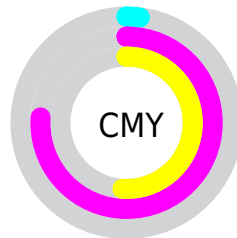


Cyan (0%)

Magenta (76%)

Yellow (51%)

Black (2%)



Cyan (2%)

Magenta (76%)

Yellow (51%)

Brightness & Saturation Gradients

These gradients show how the Hex color FB3D7C changes by changing the brightness by 10 percent. The first figure shows a shift by +10% for each color and the second figure -10%.

Similar to the brightness gradients but the following saturation gradients show a change of the Hex color FB3D7C by changing the saturation by 10% instead.

 FB3D7C

 FB3D7C

FFFFFF

 DB0D63

 FF7CB0

 BC004C

 FF9ACC

 9D0035

 FFB8E8

 7E0021

 FFD5FF

 600009

 FFF4FF

 430003

 210001

 000000

 FB3D7C

 FB3D7C

 FB246B

 FB568D

 FB0B5A

 FB6F9E

 FB0053

 FB88AE

 FBA1BF

 FBBBD0

 FBD4E1

 FBEDF1

 FBFFFF

Harmonies

Analogous

The Analogous color harmony consists of three colors that are next to each other on the color wheel.



E34DBD



FB3D7C



F1543D

Triad

The Triadic color harmony groups three colors that are evenly spaced from another and form a triangle on the color wheel.



FB3D7C



509B04



009EFF

Complementary

The Complementary color scheme is a pair of colors which are on the opposite of each other on the color wheel.



FB3D7C



3DFBBC

Split Complementary

Split-complementary colors differ from the complementary color scheme. The scheme consists of three colors, the original color and two neighbors of the complement color.



00A5D8



FB3D7C



00A355

Square

The Square scheme is like the rectangle color scheme, but the four colors are evenly spaced on the color wheel.



FB3D7C



978C00



00A699



008DFF

Rectangle

The Rectangle color scheme consists of four colors that form a rectangle on the color wheel.



FB3D7C



DB6A0F



00A699



00A1F7

Sweetspot

The Sweet Spot groups the original color and five complimentary colors.



FB3D7C



FFC4D8



BC3DFB



805C68



000000



808080

Same Dimension

The Same Dimension uses a secret algorithm to generate beautiful new colors.



FB3D7C



FF1764



FB5D3D



7D7075



BD003F



3D0014

Inverse Universe

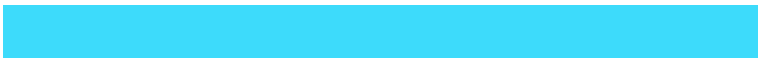
The Inverse Universe completely reimagines the original color for something new.



FB3D7C



FF1764



3DDBFB



7D7075



BD003F



3D0014

Previews

White Background



This preview shows how the Hex color FB3D7C looks on a white background.

Color Contrast Check

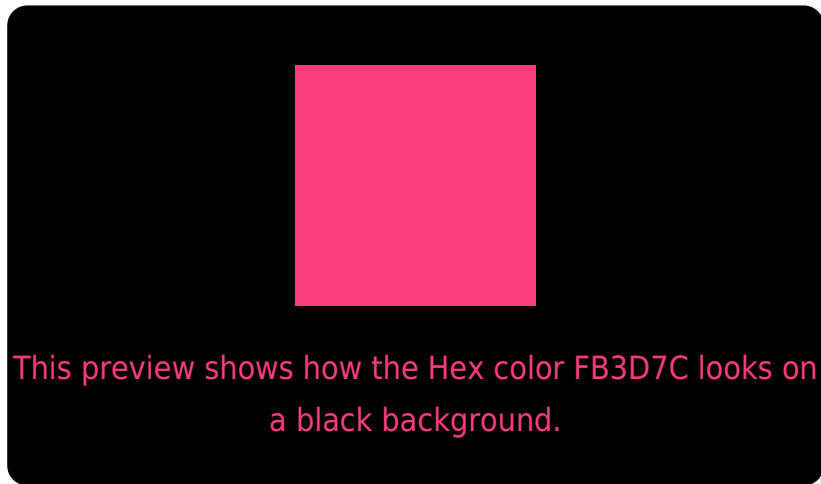
Large Text (above 18pt) WCAG AA ✓ Pass

Any Text WCAG AA × Fail

Large Text (above 18pt) WCAG AAA × Fail

Any Text WCAG AAA × Fail

Black Background



Color Contrast Check

Large Text (above 18pt) WCAG AA ✓ Pass

Any Text WCAG AA ✓ Pass

Large Text (above 18pt) WCAG AAA ✓ Pass

Any Text WCAG AAA × Fail

If you want to check with other color combinations, try the [Color Contrast Checker](#).

Hex FB3D7C Background



This preview shows how black text looks on a background with the Hex color FB3D7C.



This preview shows how white text looks on a background with the Hex color FB3D7C.

Color Blindness Simulation

Color vision deficiency is a very complex topic, and I could not describe the different causes any better than Wikipedia does, so if you want to learn more, you should check out their [article about color blindness](#).

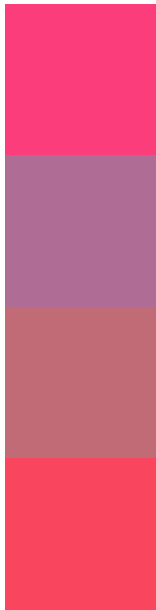
Dichromacy





Tritanopia
F8494C

Trichromacy



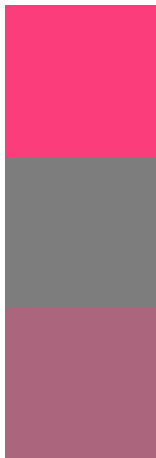
Original Color
FB3D7C

Protanomaly
AF6D96

Deuteranomaly
C06B76

Tritanomaly
F9455D

Monochromacy



Original Color
FB3D7C

Achromatopsia
7D7D7D

Achromatomaly
AB667D

CSS Examples

Text

The CSS property to change the color of the text to Hex FB3D7C is called "color". The color property can be set on classes, ids or directly on the HTML element.

This example shows how text in the color #FB3D7C looks like.

```
.text, #text, p{  
    color:#FB3D7C  
}
```

If you want to add a text shadow in that color use the text-shadow property, you can generate a text shadow directly with our [CSS Text Shadow Generator](#).

Here you see how black text with a 4 pixel #FB3D7C colored shadow looks like.

```
.shadow{ text-shadow: 4px 4px 2px #FB3D7C
}
```

Border

The CSS property to change the border of an element to Hex FB3D7C is called "border". The border property can be set on classes, ids or directly on the HTML element.

This example shows the color as border, it can be applied via the CSS property "border" or "border-color".

```
.border, #border, table{ border:4px solid
#FB3D7C }
```

If only the border color should be changed use the property `border-color`.

```
.border{ border-color:#FB3D7C }
```

If you want to add a box shadow in that color use:

Here you see how a box with a 4 pixel #FB3D7C colored shadow looks like.

```
.boxshadow{ -moz-box-shadow:4px 4px 4px  
4px #FB3D7C; -webkit-box-shadow:4px 4px  
4px 4px #FB3D7C; box-shadow:4px 4px 4px  
4px #FB3D7C }
```

Background

The CSS property to change the background color of an element to Hex FB3D7C is called "background". The background property can be set on classes, ids or directly on the HTML element.

```
.background, #background, body{  
background:#FB3D7C }
```

If only the background color should be changed can be used:

```
.background{ background-color:#FB3D7C }
```

This example shows the color as background, it is applied via the CSS property "background".

To optimize and compress your CSS code, you can use our [online CSS compressor and optimizer](#) based on csstidy. If you want to create a linear or radial gradient as background or border, check our [CSS Gradient Generator](#).

Hey! You found this booklet interesting? Support Converting Colors with the new Membership Option!

The pro membership hides all ads, plus gives you double the colors in the color bucket, and more awesome pro features!

[Learn more, Memberships starting at \\$2.50/m!](#)

**Follow me
on Twitter!**

@ConvertingColor