

# Converting Colors

Hex(FB5C77)

Have a look what the booklet for  
Hex(FB5C77) contains.

<b>Hex(FB5C77)</b> .....	3
<b><i>Conversions</i></b> .....	4
<b><i>Details</i></b> .....	6
<b><i>Harmonies</i></b> .....	11
<b><i>Previews</i></b> .....	23
<b><i>Color Blindness Simulation</i></b> .....	26
<b><i>CSS Examples</i></b> .....	29

# **Color**

**Hex(FB5C77)**

# Conversions

## Conversions Part 1

Format	Color
Hex	FB5C77
RGB	251, 92, 119
RGB Percent	98%, 36%, 47%
CMY	0.0157, 0.6392, 0.5333
CMYK	0.00, 0.63, 0.53, 0.02
HSL	350°, 95%, 67%
HSV	350°, 63%, 98%
XYZ	46.9406, 29.4954, 20.6719
YIQ	142.6190, 86.0970, 42.1050

# Conversions

## Conversions Part 2

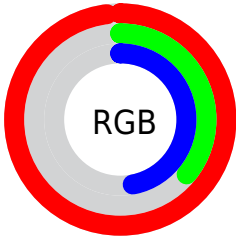
<b>Format</b>	<b>Color</b>
<b>R<sub>YB</sub></b>	251, 92, 119
Decimal	16473207
CIE <sub>Lab</sub>	61.22, 62.39, 18.18
CIE <sub>LCh</sub>	61, 64.987, 16.248
Yxy	29.4954, 0.4834, 0.3037
Android (android.graphics.Color)	4294663287 (0xFFFB5C77)
YUV	142.6190, -11.6442, 95.0501
Hunter-Lab	54.3097, 59.2379, 15.4492

# Details

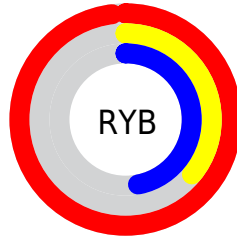
The Hex color **FB5C77** is a light color, and the websafe version is hex **FF6666**. The color can be described as light muted rose. A complement of this color would be **5CFBE0**, and the grayscale version is **8F8F8F**.

A 20% lighter version of the original color is **FF95AB**, and **BD1B47** is the 20% darker color. If you saturate the color by 10%, you get **FB4362**, and if you desaturate by 10%, it is **FB758C**.

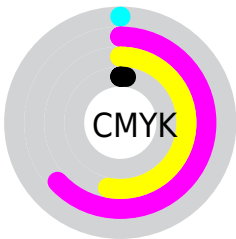
# Distribution



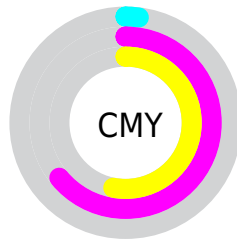
- Red (98%)
- Green (36%)
- Blue (47%)



- Red (98%)
- Yellow (36%)
- Blue (47%)



- Cyan (0%)
- Magenta (63%)
- Yellow (53%)
- Black (2%)



- Cyan (2%)
- Magenta (64%)
- Yellow (53%)

# Brightness & Saturation Gradients

These gradients show how the Hex color FB5C77 changes by changing the brightness by 10 percent. The first figure shows a shift by +10% for each color and the second figure -10%.

Similar to the brightness gradients but the following saturation gradients show a change of the Hex color FB5C77 by changing the saturation by 10% instead.



 FB5C77

 FB5C77

FFFFFF

 DC3E5E

 FF95AB

 BD1B47

 FFB2C6

 9E0031

 FFCFE2

 80001C

 FFE0FF

 620002

 460003

 260001

 000000

 FB5C77

 FB5C77

 FB4362

 FB758C

 FB2A4D

 FB8EA1

 FB1138

 FBA7B6

 FB002B

 FBC0CA

 FBDADF

 FBF3F4

 FBFFFF

# Harmonies

## Analogous

The Analogous color harmony consists of three colors that are next to each other on the color wheel.



EE5FB1



FB5C77



EB6F42

# Triad

The Triadic color harmony groups three colors that are evenly spaced from another and form a triangle on the color wheel.



FB5C77



4EA73E



00A2FF

# Complementary

The Complementary color scheme is a pair of colors which are on the opposite of each other on the color wheel.



FB5C77



5CFBE0

# Split Complementary

Split-complementary colors differ from the complementary color scheme. The scheme consists of three colors, the original color and two neighbors of the complement color.



00ACE6



FB5C77



00AD76

# Square

The Square scheme is like the rectangle color scheme, but the four colors are evenly spaced on the color wheel.



FB5C77



939B0D



00AFB2



5B90FF

# Rectangle

The Rectangle color scheme consists of four colors that form a rectangle on the color wheel.



FB5C77



D48023



00AFB2



00A6FD



# Sweetspot

The Sweet Spot groups the original color and five complimentary colors.



FB5C77



FFCFD7



DE5CFB



806267



000000



808080



# Same Dimension

The Same Dimension uses a secret algorithm to generate beautiful new colors.



FB5C77



FF3D5E



FB8E5C



7D7073



BD0020



3D000A



# Inverse Universe

The Inverse Universe completely reimagines the original color for something new.



FB5C77



FF3D5E



5CC9FB



7D7073



BD0020



3D000A



# Previews

## White Background



This preview shows how the Hex color FB5C77 looks on a white background.

## Color Contrast Check

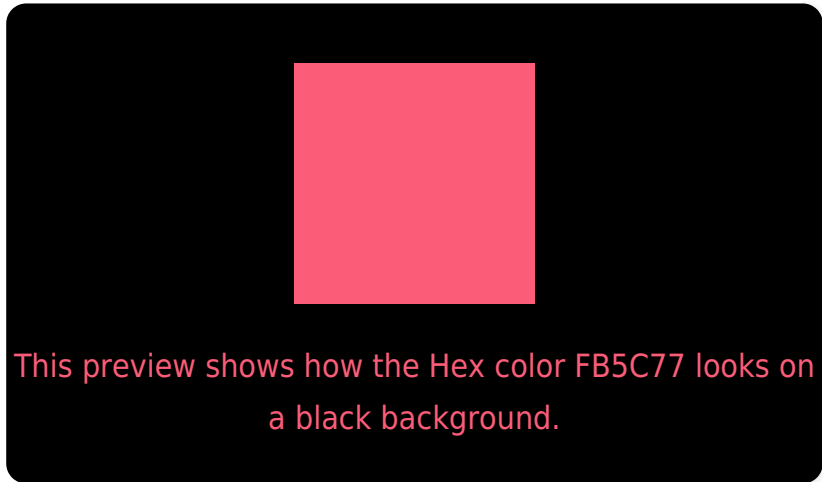
Large Text (above 18pt) WCAG AA ✓ Pass

Any Text WCAG AA × Fail

Large Text (above 18pt) WCAG AAA × Fail

Any Text WCAG AAA × Fail

# Black Background



## Color Contrast Check

Large Text (above 18pt) WCAG AA ✓ Pass

Any Text WCAG AA ✓ Pass

Large Text (above 18pt) WCAG AAA ✓ Pass

Any Text WCAG AAA × Fail

If you want to check with other color combinations, try the [Color Contrast Checker](#).



## Hex FB5C77 Background



This preview shows how black text looks on a background with the Hex color FB5C77.



This preview shows how white text looks on a background with the Hex color FB5C77.

# Color Blindness Simulation

Color vision deficiency is a very complex topic, and I could not describe the different causes any better than Wikipedia does, so if you want to learn more, you should check out their [article about color blindness](#).

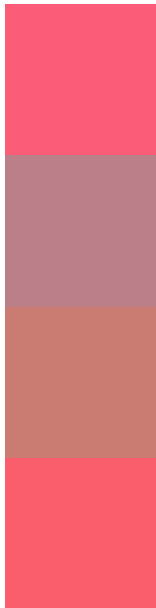
## Dichromacy





**Tritanopia**  
FA5F65

# Trichromacy



**Original Color**  
FB5C77

**Protanomaly**  
BB7F89

**Deuteranomaly**  
CA7C72

**Tritanomaly**  
FA5E6C

# Monochromacy



**Original Color**  
FB5C77

**Achromatopsia**  
8F8F8F

**Achromatomaly**  
B67C86

# CSS Examples

## Text

The CSS property to change the color of the text to Hex FB5C77 is called "color". The color property can be set on classes, ids or directly on the HTML element.

This example shows how text in the color #FB5C77 looks like.

```
.text, #text, p{  
  color:#FB5C77  
}
```

If you want to add a text shadow in that color use the text-shadow property, you can generate a text shadow directly with our [CSS Text Shadow Generator](#).

Here you see how black text with a 4 pixel #FB5C77 colored shadow looks like.

```
.shadow{ text-shadow: 4px 4px 2px #FB5C77
}
```

## Border

The CSS property to change the border of an element to Hex FB5C77 is called "border". The border property can be set on classes, ids or directly on the HTML element.

This example shows the color as border, it can be applied via the CSS property "border" or "border-color".

```
.border, #border, table{ border:4px solid
#FB5C77 }
```

If only the border color should be changed use the property `border-color`.

```
.border{ border-color:#FB5C77 }
```

If you want to add a box shadow in that color use:

Here you see how a box with a 4 pixel #FB5C77 colored shadow looks like.

```
.boxshadow{ -moz-box-shadow:4px 4px 4px  
4px #FB5C77; -webkit-box-shadow:4px 4px  
4px 4px #FB5C77; box-shadow:4px 4px 4px  
4px #FB5C77 }
```

# Background

The CSS property to change the background color of an element to Hex FB5C77 is called "background". The background property can be set on classes, ids or directly on the HTML element.

```
.background, #background, body{  
background:#FB5C77 }
```

If only the background color should be changed can be used:

```
.background{ background-color:#FB5C77 }
```

This example shows the color as background, it is applied via the CSS property "background".

To optimize and compress your CSS code, you can use our [online CSS compressor and optimizer](#) based on csstidy. If you want to create a linear or radial gradient as background or border, check our [CSS Gradient Generator](#).



Hey! You found this booklet interesting? Support Converting Colors with the new Membership Option!

The pro membership hides all ads, plus gives you double the colors in the color bucket, and more awesome pro features!

**[Learn more, Memberships starting at \\$2.50/m!](#)**

**Follow me  
on Twitter!**

@ConvertingColor