

Converting Colors

Hex(FB5E8F)

Have a look what the booklet for
Hex(FB5E8F) contains.

Hex(FB5E8F)	3
<i>Conversions</i>	4
<i>Details</i>	6
<i>Harmonies</i>	11
<i>Previews</i>	23
<i>Color Blindness Simulation</i>	26
<i>CSS Examples</i>	29

Color

Hex(FB5E8F)

Conversions

Conversions Part 1

Format	Color
Hex	FB5E8F
RGB	251, 94, 143
RGB Percent	98%, 37%, 56%
CMY	0.0157, 0.6314, 0.4392
CMYK	0.00, 0.63, 0.43, 0.02
HSL	341°, 95%, 68%
HSV	341°, 63%, 98%
XYZ	48.7443, 30.4978, 29.3042
YIQ	146.5290, 77.8430, 48.5230

Conversions

Conversions Part 2

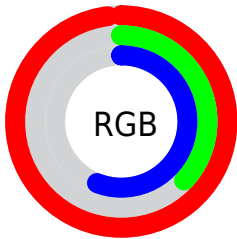
Format	Color
R _Y B	251, 94, 143
Decimal	16473743
CIE Lab	62.08, 63.66, 5.50
CIE LCh	62, 63.899, 4.934
Yxy	30.4978, 0.4491, 0.2810
Android (android.graphics.Color)	4294663823 (0xFFFB5E8F)
YUV	146.5290, -1.7398, 91.6211
Hunter-Lab	55.2248, 60.9099, 7.1961

Details

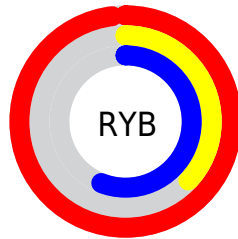
The Hex color **FB5E8F** is a light color, and the websafe version is hex **FF6699**. The color can be described as light muted rose. A complement of this color would be **5EFBCA**, and the grayscale version is **929292**.

A 20% lighter version of the original color is **FF97C5**, and **BE1D5D** is the 20% darker color. If you saturate the color by 10%, you get **FB457E**, and if you desaturate by 10%, it is **FB77A0**.

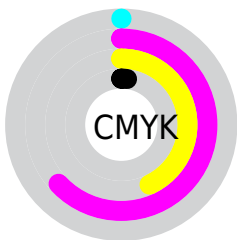
Distribution



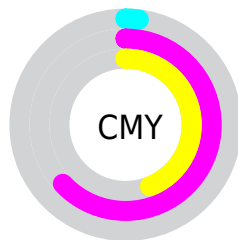
- Red (98%)
- Green (37%)
- Blue (56%)



- Red (98%)
- Yellow (37%)
- Blue (56%)



- Cyan (0%)
- Magenta (63%)
- Yellow (43%)
- Black (2%)



- Cyan (2%)
- Magenta (63%)
- Yellow (44%)

Brightness & Saturation Gradients

These gradients show how the Hex color FB5E8F changes by changing the brightness by 10 percent. The first figure shows a shift by +10% for each color and the second figure -10%.

Similar to the brightness gradients but the following saturation gradients show a change of the Hex color FB5E8F by changing the saturation by 10% instead.

 FB5E8F

 FB5E8F

FFFFFF

 DC4076

 FF97C5

 BE1D5D

 FFB4E0

 9F0046

 FFD1FD

 820030

 FFEFFF

 64001B

 490002

 2A0001

 000000

 FB5E8F

 FB5E8F

 FB457E

 FB77A0

 FB2C6C

 FB90B2

 FB135B

 FBA9C3

 FB004E

 FBC2D4

 FBDBE5

 FBF5F7

 FBFFFF

Harmonies

Analogous

The Analogous color harmony consists of three colors that are next to each other on the color wheel.



E16AC7



FB5E8F



F56A58

Triad

The Triadic color harmony groups three colors that are evenly spaced from another and form a triangle on the color wheel.



FB5E8F



6FA530



00A8FC

Complementary

The Complementary color scheme is a pair of colors which are on the opposite of each other on the color wheel.



FB5E8F



5EFBCA

Split Complementary

Split-complementary colors differ from the complementary color scheme. The scheme consists of three colors, the original color and two neighbors of the complement color.



00AFD6



FB5E8F



00AD63

Square

The Square scheme is like the rectangle color scheme, but the four colors are evenly spaced on the color wheel.



FB5E8F



AA960E



00B19E



009AFF

Rectangle

The Rectangle color scheme consists of four colors that form a rectangle on the color wheel.



FB5E8F



E47938



00B19E



00ACF2

Sweetspot

The Sweet Spot groups the original color and five complimentary colors.



FB5E8F



FFCFDE



C95EFB



80626B



000000



808080

Same Dimension

The Same Dimension uses a secret algorithm to generate beautiful new colors.



FB5E8F



FF407B



FB7B5E



7D7074



BD003B



3D0013

Inverse Universe

The Inverse Universe completely reimagines the original color for something new.



FB5E8F



FF407B



5EDEFB



7D7074



BD003B



3D0013

Previews

White Background



This preview shows how the Hex color FB5E8F looks on a white background.

Color Contrast Check

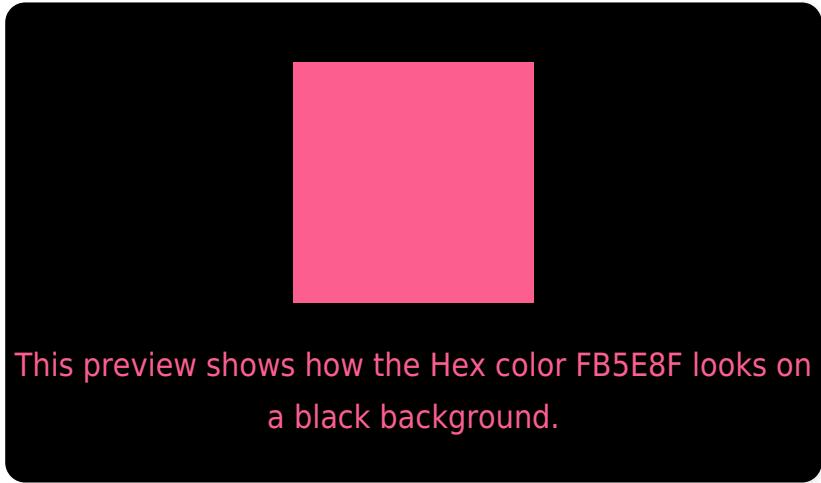
Large Text (above 18pt) WCAG AA × Fail

Any Text WCAG AA × Fail

Large Text (above 18pt) WCAG AAA × Fail

Any Text WCAG AAA × Fail

Black Background



Color Contrast Check

Large Text (above 18pt) WCAG AA ✓ Pass

Any Text WCAG AA ✓ Pass

Large Text (above 18pt) WCAG AAA ✓ Pass

Any Text WCAG AAA ✓ Pass

If you want to check with other color combinations, try the [Color Contrast Checker](#).

Hex FB5E8F Background



This preview shows how black text looks on a background with the Hex color FB5E8F.

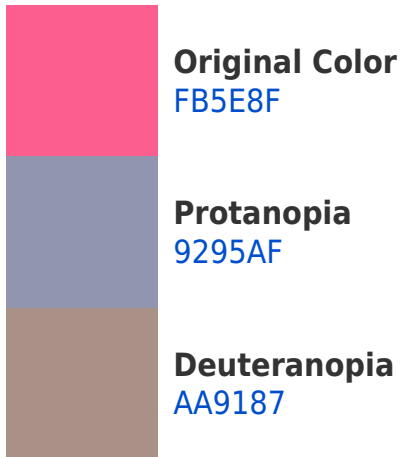


This preview shows how white text looks on a background with the Hex color FB5E8F.

Color Blindness Simulation

Color vision deficiency is a very complex topic, and I could not describe the different causes any better than Wikipedia does, so if you want to learn more, you should check out their [article about color blindness](#).

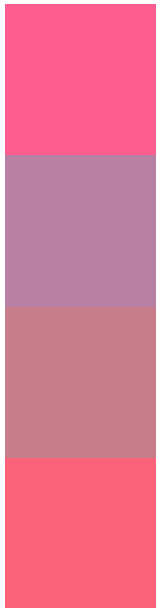
Dichromacy





Tritanopia
F9656C

Trichromacy



Original Color
FB5E8F

Protanomaly
B881A3

Deuteranomaly
C77E8A

Tritanomaly
FA6279

Monochromacy



Original Color
FB5E8F

Achromatopsia
939393

Achromatomaly
B98092

CSS Examples

Text

The CSS property to change the color of the text to Hex FB5E8F is called "color". The color property can be set on classes, ids or directly on the HTML element.

This example shows how text in the color #FB5E8F looks like.

```
.text, #text, p{  
    color:#FB5E8F  
}
```

If you want to add a text shadow in that color use the text-shadow property, you can generate a text shadow directly with our [CSS Text Shadow Generator](#).

Here you see how black text with a 4 pixel #FB5E8F colored shadow looks like.

```
.shadow{ text-shadow: 4px 4px 2px #FB5E8F
}
```

Border

The CSS property to change the border of an element to Hex FB5E8F is called "border". The border property can be set on classes, ids or directly on the HTML element.

This example shows the color as border, it can be applied via the CSS property "border" or "border-color".

```
.border, #border, table{ border:4px solid
#FB5E8F }
```

If only the border color should be changed use the property `border-color`.

```
.border{ border-color:#FB5E8F }
```

If you want to add a box shadow in that color use:

Here you see how a box with a 4 pixel #FB5E8F colored shadow looks like.

```
.boxshadow{ -moz-box-shadow:4px 4px 4px  
4px #FB5E8F; -webkit-box-shadow:4px 4px  
4px 4px #FB5E8F; box-shadow:4px 4px 4px  
4px #FB5E8F }
```

Background

The CSS property to change the background color of an element to Hex FB5E8F is called "background". The background property can be set on classes, ids or directly on the HTML element.

```
.background, #background, body{  
background:#FB5E8F }
```

If only the background color should be changed can be used:

```
.background{ background-color:#FB5E8F }
```

This example shows the color as background, it is applied via the CSS property "background".

To optimize and compress your CSS code, you can use our [online CSS compressor and optimizer](#) based on csstidy. If you want to create a linear or radial gradient as background or border, check our [CSS Gradient Generator](#).

Hey! You found this booklet interesting? Support Converting Colors with the new Membership Option!

The pro membership hides all ads, plus gives you double the colors in the color bucket, and more awesome pro features!

[Learn more, Memberships starting at \\$2.50/m!](#)

**Follow me
on Twitter!**

@ConvertingColor