

# Converting Colors

Hex(FB639A)

Have a look what the booklet for  
Hex(FB639A) contains.

<b>Hex(FB639A)</b> .....	3
<i><b>Conversions</b></i> .....	4
<i><b>Details</b></i> .....	6
<i><b>Harmonies</b></i> .....	11
<i><b>Previews</b></i> .....	23
<i><b>Color Blindness Simulation</b></i> .....	26
<i><b>CSS Examples</b></i> .....	29

**Color**

**Hex(FB639A)**

# Conversions

## Conversions Part 1

Format	Color
Hex	FB639A
RGB	251, 99, 154
RGB Percent	98%, 39%, 60%
CMY	0.0157, 0.6118, 0.3961
CMYK	0.00, 0.61, 0.39, 0.02
HSL	338°, 95%, 69%
HSV	338°, 61%, 98%
XYZ	50.0782, 31.7660, 34.0639
YIQ	150.7180, 72.9370, 49.3290

# Conversions

## Conversions Part 2

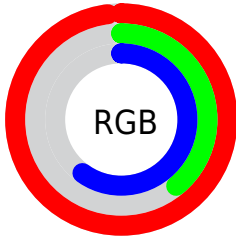
<b>Format</b>	<b>Color</b>
R <sub>Y</sub> B	251, 99, 154
Decimal	16475034
CIE Lab	63.15, 62.68, 0.69
CIE LCh	63, 62.682, 0.633
Yxy	31.7660, 0.4321, 0.2741
Android (android.graphics.Color)	4294665114 (0xFFFB639A)
YUV	150.7180, 1.6180, 87.9473
Hunter-Lab	56.3613, 59.9687, 3.6190

# Details

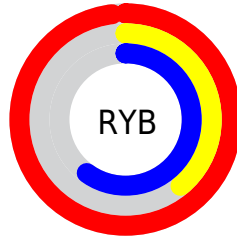
The Hex color **FB639A** is a light color, and the websafe version is hex **FF6699**. A complement of this color would be **63FBC4**, and the grayscale version is **979797**.

A 20% lighter version of the original color is **FF9CD0**, and **BE2567** is the 20% darker color. If you saturate the color by 10%, you get **FB4A8A**, and if you desaturate by 10%, it is **FB7CAA**.

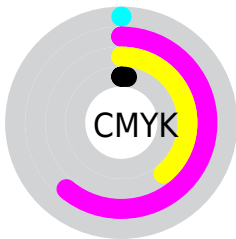
# Distribution



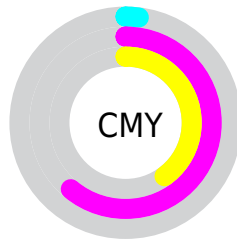
- Red (98%)
- Green (39%)
- Blue (60%)



- Red (98%)
- Yellow (39%)
- Blue (60%)



- Cyan (0%)
- Magenta (61%)
- Yellow (39%)
- Black (2%)



- Cyan (2%)
- Magenta (61%)
- Yellow (40%)

# Brightness & Saturation Gradients

These gradients show how the Hex color FB639A changes by changing the brightness by 10 percent. The first figure shows a shift by +10% for each color and the second figure -10%.

Similar to the brightness gradients but the following saturation gradients show a change of the Hex color FB639A by changing the saturation by 10% instead.



 FB639A

 FB639A

FFFFFF

 DC4680

 FF9CD0

 BE2567

 FFB9EC

 A0004F

 FFD6FF

 830039

 FFF3FF

 660023

 4A000D

 2D0001

 000000

 FB639A

 FB639A

 FB4A8A

 FB7CAA

 FB317A

 FB95BA

 FB186A

 FBAECA

 FB005B

 FBC7DA

 FBE1EA

 FBFAFA

 FBFFFF

# Harmonies

## Analogous

The Analogous color harmony consists of three colors that are next to each other on the color wheel.



DD71D0



FB639A



FA6B63

# Triad

The Triadic color harmony groups three colors that are evenly spaced from another and form a triangle on the color wheel.



FB639A



7CA62F



00ACFA

# Complementary

The Complementary color scheme is a pair of colors which are on the opposite of each other on the color wheel.



FB639A



63FBC4

# Split Complementary

Split-complementary colors differ from the complementary color scheme. The scheme consists of three colors, the original color and two neighbors of the complement color.



00B3D0



FB639A



1BAF5F

# Square

The Square scheme is like the rectangle color scheme, but the four colors are evenly spaced on the color wheel.



FB639A



B49719



00B398



009FFF

# Rectangle

The Rectangle color scheme consists of four colors that form a rectangle on the color wheel.



FB639A



EB7943



00B398



00AFEE



# Sweetspot

The Sweet Spot groups the original color and five complimentary colors.



FB639A



FFD1E2



C363FB



80636E



000000



808080



# Same Dimension

The Same Dimension uses a secret algorithm to generate beautiful new colors.



FB639A



FF4588



FB7763



7D7075



BD0044



3D0016



# Inverse Universe

The Inverse Universe completely reimagines the original color for something new.



FB639A



FF4588



63E7FB



7D7075



BD0044

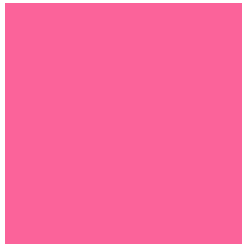


3D0016



# Previews

## White Background



This preview shows how the Hex color FB639A looks on a white background.

## Color Contrast Check

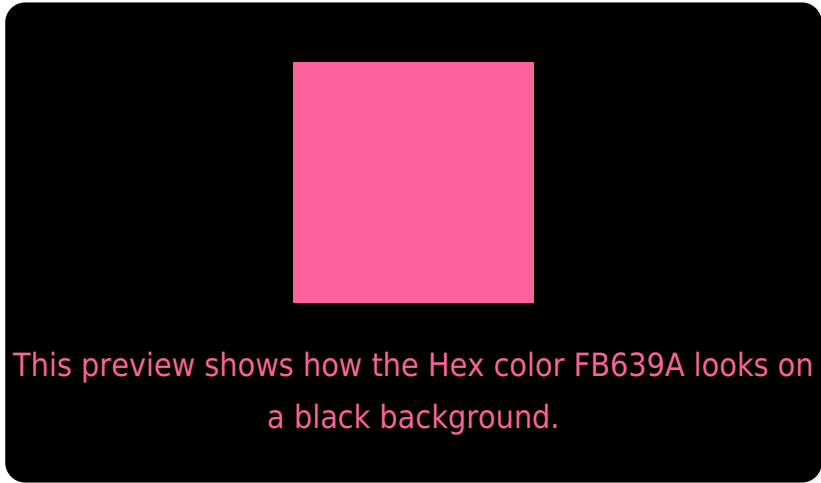
Large Text (above 18pt) WCAG AA × Fail

Any Text WCAG AA × Fail

Large Text (above 18pt) WCAG AAA × Fail

Any Text WCAG AAA × Fail

# Black Background



## Color Contrast Check

Large Text (above 18pt) WCAG AA ✓ Pass

Any Text WCAG AA ✓ Pass

Large Text (above 18pt) WCAG AAA ✓ Pass

Any Text WCAG AAA ✓ Pass

If you want to check with other color combinations, try the [Color Contrast Checker](#).



## Hex FB639A Background



This preview shows how black text looks on a background with the Hex color FB639A.



This preview shows how white text looks on a background with the Hex color FB639A.

# Color Blindness Simulation

Color vision deficiency is a very complex topic, and I could not describe the different causes any better than Wikipedia does, so if you want to learn more, you should check out their [article about color blindness](#).

## Dichromacy



**Original Color**  
FB639A

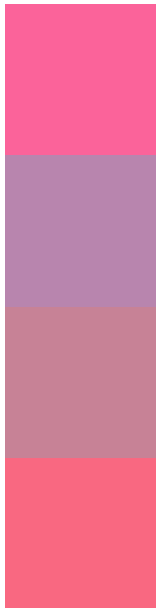
**Protanopia**  
9298BA

**Deuteranopia**  
AA9493



**Tritanopia**  
F86B72

# Trichromacy



**Original Color**  
FB639A

**Protanomaly**  
B885AE

**Deuteranomaly**  
C78296

**Tritanomaly**  
F96881

# Monochromacy



**Original Color**  
FB639A

**Achromatopsia**  
979797

**Achromatomaly**  
BB8498

# CSS Examples

## Text

The CSS property to change the color of the text to Hex FB639A is called "color". The color property can be set on classes, ids or directly on the HTML element.

This example shows how text in the color #FB639A looks like.

```
.text, #text, p{  
    color:#FB639A  
}
```

If you want to add a text shadow in that color use the text-shadow property, you can generate a text shadow directly with our [CSS Text Shadow Generator](#).

Here you see how black text with a 4 pixel #FB639A colored shadow looks like.

```
.shadow{ text-shadow: 4px 4px 2px #FB639A
}
```

## Border

The CSS property to change the border of an element to Hex FB639A is called "border". The border property can be set on classes, ids or directly on the HTML element.

This example shows the color as border, it can be applied via the CSS property "border" or "border-color".

```
.border, #border, table{ border:4px solid
#FB639A }
```

If only the border color should be changed use the property `border-color`.

```
.border{ border-color:#FB639A }
```

If you want to add a box shadow in that color use:

Here you see how a box with a 4 pixel #FB639A colored shadow looks like.

```
.boxshadow{ -moz-box-shadow:4px 4px 4px  
4px #FB639A; -webkit-box-shadow:4px 4px  
4px 4px #FB639A; box-shadow:4px 4px 4px  
4px #FB639A }
```

# Background

The CSS property to change the background color of an element to Hex FB639A is called "background". The background property can be set on classes, ids or directly on the HTML element.

```
.background, #background, body{  
background:#FB639A }
```

If only the background color should be changed can be used:

```
.background{ background-color:#FB639A }
```

This example shows the color as background, it is applied via the CSS property "background".

To optimize and compress your CSS code, you can use our [online CSS compressor and optimizer](#) based on csstidy. If you want to create a linear or radial gradient as background or border, check our [CSS Gradient Generator](#).



Hey! You found this booklet interesting? Support Converting Colors with the new Membership Option!

The pro membership hides all ads, plus gives you double the colors in the color bucket, and more awesome pro features!

**[Learn more, Memberships starting at \\$2.50/m!](#)**

**Follow me  
on Twitter!**

@ConvertingColor