

# Converting Colors

Hex(FB745A)

Have a look what the booklet for  
Hex(FB745A) contains.

<b>Hex(FB745A)</b> .....	3
<b><i>Conversions</i></b> .....	4
<b><i>Details</i></b> .....	6
<b><i>Harmonies</i></b> .....	11
<b><i>Previews</i></b> .....	23
<b><i>Color Blindness Simulation</i></b> .....	26
<b><i>CSS Examples</i></b> .....	29

**Color**

**Hex(FB745A)**

# Conversions

## Conversions Part 1

Format	Color
Hex	FB745A
RGB	251, 116, 90
RGB Percent	98%, 45%, 35%
CMY	0.0157, 0.5451, 0.6471
CMYK	0.00, 0.54, 0.64, 0.02
HSL	10°, 95%, 67%
HSV	10°, 64%, 98%
XYZ	47.8745, 33.7382, 13.6617
YIQ	153.4010, 88.8060, 20.5340

# Conversions

## Conversions Part 2

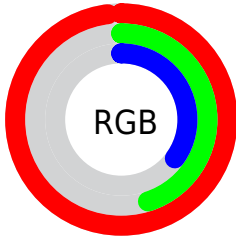
Format	Color
<a href="#">RYB</a>	<a href="#">251, 121, 90</a>
Decimal	<a href="#">16479322</a>
CIELab	<a href="#">64.75, 49.75, 39.11</a>
CIElCh	<a href="#">65, 63.277, 38.171</a>
Yxy	<a href="#">33.7382, 0.5025, 0.3541</a>
Android (android.graphics.Color)	<a href="#">4294669402</a> ( <a href="#">0xFFFB745A</a> )
YUV	<a href="#">153.4010, -31.2567, 85.5943</a>
Hunter-Lab	<a href="#">58.0846, 45.4753, 26.7140</a>

# Details

The Hex color **FB745A** is a light color, and the websafe version is hex **FF6666**. The color can be described as light muted orange. A complement of this color would be **5AE1FB**, and the grayscale version is **9A9A9A**.

A 20% lighter version of the original color is **FFAB8D**, and **BC3E2B** is the 20% darker color. If you saturate the color by 10%, you get **FB5F41**, and if you desaturate by 10%, it is **FB8973**.

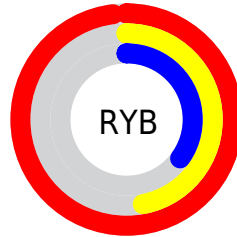
# Distribution



Red (98%)

Green (45%)

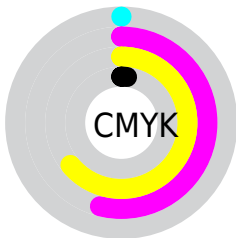
Blue (35%)



Red (98%)

Yellow (47%)

Blue (35%)

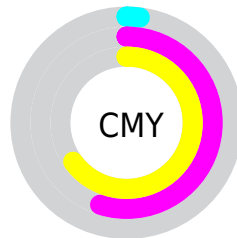


Cyan (0%)

Magenta (54%)

Yellow (64%)

Black (2%)



Cyan (2%)

Magenta (55%)

Yellow (65%)

# Brightness & Saturation Gradients

These gradients show how the Hex color FB745A changes by changing the brightness by 10 percent. The first figure shows a shift by +10% for each color and the second figure -10%.

Similar to the brightness gradients but the following saturation gradients show a change of the Hex color FB745A by changing the saturation by 10% instead.



 FB745A

 FB745A

FFFFFF

 DC5942

 FFAB8D

 BC3E2B

 FFC7A7

 9E2115

 FFE4C3

 800000

 FFFFDF

 610000

 FFFFFB

 440000

 280001

 000000

 FB745A

 FB745A

 FB5F41

 FB8973

 FB4A28

 FB9E8C

 FB350F

 FBB3A5

 FB2900

 FBC8BE

 FBDDD8

 FBF2F1

 FBFFFF

# Harmonies

## Analogous

The Analogous color harmony consists of three colors that are next to each other on the color wheel.



FF6790



FB745A



DB8B2F

# Triad

The Triadic color harmony groups three colors that are evenly spaced from another and form a triangle on the color wheel.



FB745A



00B571



3C9EFF

# Complementary

The Complementary color scheme is a pair of colors which are on the opposite of each other on the color wheel.



FB745A



5AE1FB

# Split Complementary

Split-complementary colors differ from the complementary color scheme. The scheme consists of three colors, the original color and two neighbors of the complement color.



00AEFF



FB745A



00B8AB

# Square

The Square scheme is like the rectangle color scheme, but the four colors are evenly spaced on the color wheel.



FB745A



6FAD3D



00B6E2



B487F7

# Rectangle

The Rectangle color scheme consists of four colors that form a rectangle on the color wheel.



FB745A



BD991D



00B6E2



00A5FF



# Sweetspot

The Sweet Spot groups the original color and five complimentary colors.



FB745A



FFD6CF



FB5AE3



806762



000000



808080



# Same Dimension

The Same Dimension uses a secret algorithm to generate beautiful new colors.



FB745A



FF5A3B



FBC35A



7D7270



BD1E00



3D0A00



# Inverse Universe

The Inverse Universe completely reimagines the original color for something new.



5AE1FB



3BDFFF



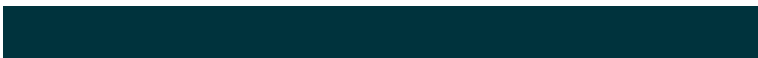
5A92FB



707B7D



009EBD



00333D



# Previews

## White Background



This preview shows how the Hex color FB745A looks on a white background.

## Color Contrast Check

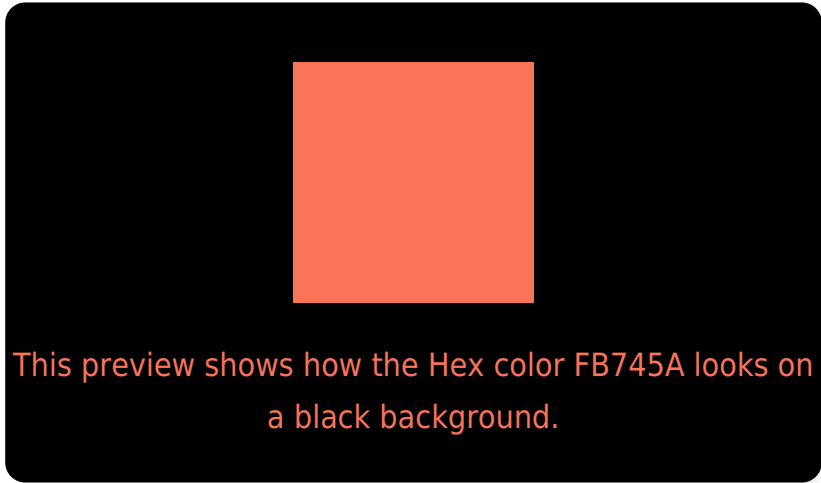
Large Text (above 18pt) WCAG AA × Fail

Any Text WCAG AA × Fail

Large Text (above 18pt) WCAG AAA × Fail

Any Text WCAG AAA × Fail

# Black Background



## Color Contrast Check

Large Text (above 18pt) WCAG AA ✓ Pass

Any Text WCAG AA ✓ Pass

Large Text (above 18pt) WCAG AAA ✓ Pass

Any Text WCAG AAA ✓ Pass

If you want to check with other color combinations, try the [Color Contrast Checker](#).



## Hex FB745A Background



This preview shows how black text looks on a background with the Hex color FB745A.

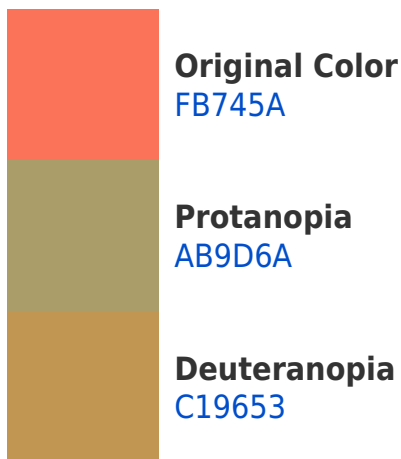


This preview shows how white text looks on a background with the Hex color FB745A.

# Color Blindness Simulation

Color vision deficiency is a very complex topic, and I could not describe the different causes any better than Wikipedia does, so if you want to learn more, you should check out their [article about color blindness](#).

## Dichromacy





# Trichromacy



**Original Color**  
FB745A



**Protanomaly**  
C88E64



**Deuteranomaly**  
D68A56



**Tritanomaly**  
FC716D

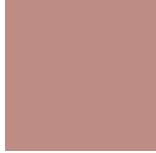
# Monochromacy



**Original Color**  
FB745A



**Achromatopsia**  
999999



**Achromatomaly**  
BD8C82

# CSS Examples

## Text

The CSS property to change the color of the text to Hex FB745A is called "color". The color property can be set on classes, ids or directly on the HTML element.

This example shows how text in the color #FB745A looks like.

```
.text, #text, p{  
    color:#FB745A  
}
```

If you want to add a text shadow in that color use the text-shadow property, you can generate a text shadow directly with our [CSS Text Shadow Generator](#).

Here you see how black text with a 4 pixel #FB745A colored shadow looks like.

```
.shadow{ text-shadow: 4px 4px 2px #FB745A
}
```

## Border

The CSS property to change the border of an element to Hex FB745A is called "border". The border property can be set on classes, ids or directly on the HTML element.

This example shows the color as border, it can be applied via the CSS property "border" or "border-color".

```
.border, #border, table{ border:4px solid
#FB745A }
```

If only the border color should be changed use the property `border-color`.

```
.border{ border-color:#FB745A }
```

If you want to add a box shadow in that color use:

Here you see how a box with a 4 pixel #FB745A colored shadow looks like.

```
.boxshadow{ -moz-box-shadow:4px 4px 4px  
4px #FB745A; -webkit-box-shadow:4px 4px  
4px 4px #FB745A; box-shadow:4px 4px 4px  
4px #FB745A }
```

# Background

The CSS property to change the background color of an element to Hex FB745A is called "background". The background property can be set on classes, ids or directly on the HTML element.

```
.background, #background, body{  
background:#FB745A }
```

If only the background color should be changed can be used:

```
.background{ background-color:#FB745A }
```

This example shows the color as background, it is applied via the CSS property "background".

To optimize and compress your CSS code, you can use our [online CSS compressor and optimizer](#) based on csstidy. If you want to create a linear or radial gradient as background or border, check our [CSS Gradient Generator](#).



Hey! You found this booklet interesting? Support Converting Colors with the new Membership Option!

The pro membership hides all ads, plus gives you double the colors in the color bucket, and more awesome pro features!

**[Learn more, Memberships starting at \\$2.50/m!](#)**

**Follow me  
on Twitter!**

@ConvertingColor