

Converting Colors

Hex(FB807D)

Have a look what the booklet for
Hex(FB807D) contains.

Hex(FB807D)	3
<i>Conversions</i>	4
<i>Details</i>	6
<i>Harmonies</i>	11
<i>Previews</i>	23
<i>Color Blindness Simulation</i>	26
<i>CSS Examples</i>	29

Color

Hex(FB807D)

Conversions

Conversions Part 1

Format	Color
Hex	FB807D
RGB	251, 128, 125
RGB Percent	98%, 50%, 49%
CMY	0.0157, 0.4980, 0.5098
CMYK	0.00, 0.49, 0.50, 0.02
HSL	1°, 94%, 74%
HSV	1°, 50%, 98%
XYZ	51.2045, 37.4282, 23.9276
YIQ	164.4350, 74.2710, 25.1430

Conversions

Conversions Part 2

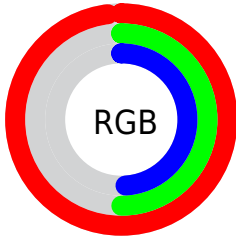
Format	Color
R _Y B	251, 128, 125
Decimal	16482429
CIE Lab	67.60, 46.51, 23.44
CIE LCh	68, 52.084, 26.748
Yxy	37.4282, 0.4549, 0.3325
Android (android.graphics.Color)	4294672509 (0xFFFB807D)
YUV	164.4350, -19.4415, 75.9175
Hunter-Lab	61.1786, 42.3361, 19.6361

Details

The Hex color **FB807D** is a light color, and the websafe version is hex **FF9999**. A complement of this color would be **7DF8FB**, and the grayscale version is **A5A5A5**.

A 20% lighter version of the original color is **FFB7B2**, and **BE4B4C** is the 20% darker color. If you saturate the color by 10%, you get **FB6764**, and if you desaturate by 10%, it is **FB9996**.

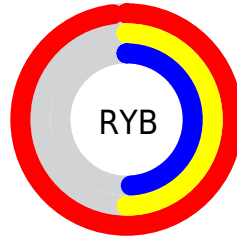
Distribution



Red (98%)

Green (50%)

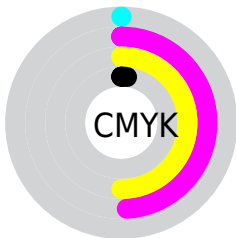
Blue (49%)



Red (98%)

Yellow (50%)

Blue (49%)

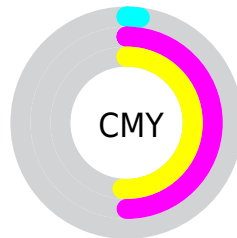


Cyan (0%)

Magenta (49%)

Yellow (50%)

Black (2%)



Cyan (2%)

Magenta (50%)

Yellow (51%)

Brightness & Saturation Gradients

These gradients show how the Hex color FB807D changes by changing the brightness by 10 percent. The first figure shows a shift by +10% for each color and the second figure -10%.

Similar to the brightness gradients but the following saturation gradients show a change of the Hex color FB807D by changing the saturation by 10% instead.

 FB807D

 FB807D

FFFFFF

 DC6564

 FFB7B2

 BE4B4C

 FFD4CD

 A03035

 FFF1E9

 831120

 66000A

 490000

 2F0002

 000000

 FB807D

 FB807D

 FB6764

 FB9996

 FB4F4B

 FBB1AF

 FB3632

 FBCAC8

 FB1E19

 FBE2E1

 FB0600

 FBFBF8

 FBFFFF

Harmonies

Analogous

The Analogous color harmony consists of three colors that are next to each other on the color wheel.



F87DAC



FB807D



E88F57

Triad

The Triadic color harmony groups three colors that are evenly spaced from another and form a triangle on the color wheel.



FB807D



5AB86F



36ABFF

Complementary

The Complementary color scheme is a pair of colors which are on the opposite of each other on the color wheel.



FB807D



7DF8FB

Split Complementary

Split-complementary colors differ from the complementary color scheme. The scheme consists of three colors, the original color and two neighbors of the complement color.



00B6F2



FB807D



00BC9E

Square

The Square scheme is like the rectangle color scheme, but the four colors are evenly spaced on the color wheel.



FB807D



96AE4D



00BCCD



9F9AF9

Rectangle

The Rectangle color scheme consists of four colors that form a rectangle on the color wheel.



FB807D



D19B47



00BCCD



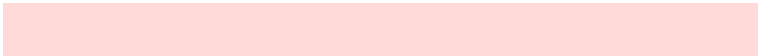
00B0FF

Sweetspot

The Sweet Spot groups the original color and five complimentary colors.



FB807D



FFDAD9



FB7DF9



806969



000000



808080

Same Dimension

The Same Dimension uses a secret algorithm to generate beautiful new colors.



FB807D



FF6A66



FBBE7D



7D7170



BD0400



3D0100

Inverse Universe

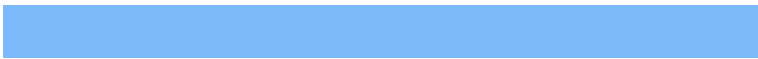
The Inverse Universe completely reimagines the original color for something new.



7DF8FB



66FBFF



7DBAFB



707D7D



00B8BD



003C3D

Previews

White Background



This preview shows how the Hex color FB807D looks on a white background.

Color Contrast Check

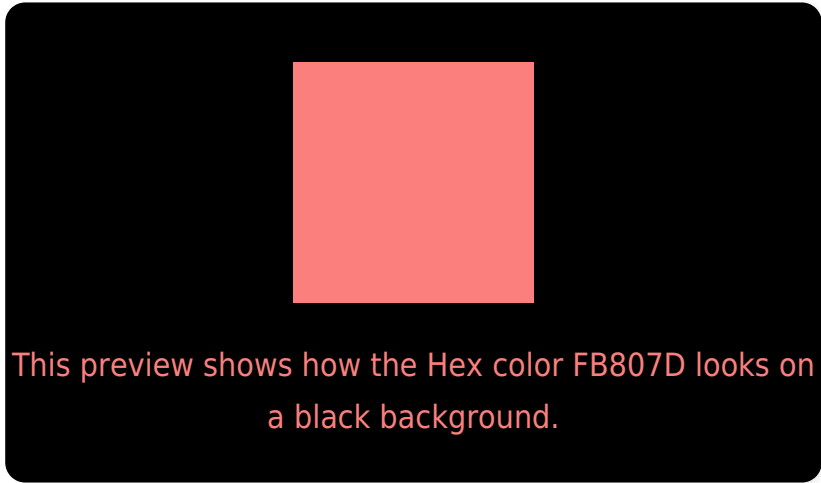
Large Text (above 18pt) WCAG AA × Fail

Any Text WCAG AA × Fail

Large Text (above 18pt) WCAG AAA × Fail

Any Text WCAG AAA × Fail

Black Background



Color Contrast Check

Large Text (above 18pt) WCAG AA ✓ Pass

Any Text WCAG AA ✓ Pass

Large Text (above 18pt) WCAG AAA ✓ Pass

Any Text WCAG AAA ✓ Pass

If you want to check with other color combinations, try the [Color Contrast Checker](#).

Hex FB807D Background



This preview shows how black text looks on a background with the Hex color FB807D.

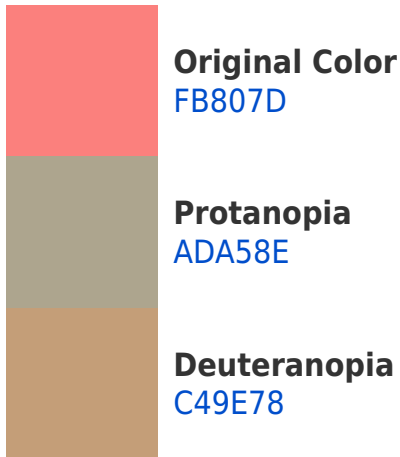


This preview shows how white text looks on a background with the Hex color FB807D.

Color Blindness Simulation

Color vision deficiency is a very complex topic, and I could not describe the different causes any better than Wikipedia does, so if you want to learn more, you should check out their [article about color blindness](#).

Dichromacy



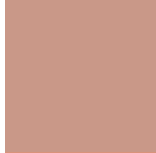


Tritanopia
FC7E87

Trichromacy



Original Color
FB807D



Protanomaly
C99888



Deuteranomaly
D8937A



Tritanomaly
FC7F83

Monochromacy



Original Color
FB807D



Achromatopsia
A4A4A4



Achromatomaly
C49796

CSS Examples

Text

The CSS property to change the color of the text to Hex FB807D is called "color". The color property can be set on classes, ids or directly on the HTML element.

This example shows how text in the color #FB807D looks like.

```
.text, #text, p{  
    color:#FB807D  
}
```

If you want to add a text shadow in that color use the text-shadow property, you can generate a text shadow directly with our [CSS Text Shadow Generator](#).

Here you see how black text with a 4 pixel #FB807D colored shadow looks like.

```
.shadow{ text-shadow: 4px 4px 2px #FB807D
}
```

Border

The CSS property to change the border of an element to Hex FB807D is called "border". The border property can be set on classes, ids or directly on the HTML element.

This example shows the color as border, it can be applied via the CSS property "border" or "border-color".

```
.border, #border, table{ border:4px solid
#FB807D }
```

If only the border color should be changed use the property `border-color`.

```
.border{ border-color:#FB807D }
```

If you want to add a box shadow in that color use:

Here you see how a box with a 4 pixel #FB807D colored shadow looks like.

```
.boxshadow{ -moz-box-shadow:4px 4px 4px  
4px #FB807D; -webkit-box-shadow:4px 4px  
4px 4px #FB807D; box-shadow:4px 4px 4px  
4px #FB807D }
```

Background

The CSS property to change the background color of an element to Hex FB807D is called "background". The background property can be set on classes, ids or directly on the HTML element.

```
.background, #background, body{  
background:#FB807D }
```

If only the background color should be changed can be used:

```
.background{ background-color:#FB807D }
```

This example shows the color as background, it is applied via the CSS property "background".

To optimize and compress your CSS code, you can use our [online CSS compressor and optimizer](#) based on csstidy. If you want to create a linear or radial gradient as background or border, check our [CSS Gradient Generator](#).

Hey! You found this booklet interesting? Support Converting Colors with the new Membership Option!

The pro membership hides all ads, plus gives you double the colors in the color bucket, and more awesome pro features!

[Learn more, Memberships starting at \\$2.50/m!](#)

**Follow me
on Twitter!**

@ConvertingColor