

# Converting Colors

Hex(FBC7D2)

Have a look what the booklet for  
Hex(FBC7D2) contains.

|  |    |
|--|----|
| <b>Hex(FBC7D2)</b> .....                       | 3  |
| <i><b>Conversions</b></i> .....                | 4  |
| <i><b>Details</b></i> .....                    | 6  |
| <i><b>Harmonies</b></i> .....                  | 11 |
| <i><b>Previews</b></i> .....                   | 23 |
| <i><b>Color Blindness Simulation</b></i> ..... | 26 |
| <i><b>CSS Examples</b></i> .....               | 29 |

# **Color**

**Hex(FBC7D2)**

# Conversions

## Conversions Part 1

| Format      | Color                      |
|-------------|----------------------------|
| Hex         | FBC7D2                     |
| RGB         | 251, 199, 210              |
| RGB Percent | 98%, 78%, 82%              |
| CMY         | 0.0157, 0.2196, 0.1765     |
| CMYK        | 0.00, 0.21, 0.16, 0.02     |
| HSL         | 347°, 87%, 88%             |
| HSV         | 347°, 21%, 98%             |
| XYZ         | 71.8399, 66.0092, 69.9274  |
| YIQ         | 215.8020, 27.4610, 14.4450 |

# Conversions

## Conversions Part 2

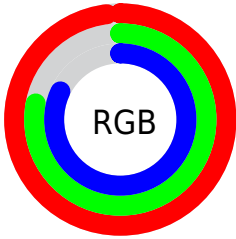
| Format                              | Color                         |
|-------------------------------------|-------------------------------|
| R <sub>Y</sub> B                    | 251, 199, 210                 |
| Decimal                             | 16500690                      |
| CIE Lab                             | 85.00, 20.11, 1.59            |
| CIE LCh                             | 85, 20.168, 4.509             |
| Yxy                                 | 66.0092, 0.3458,<br>0.3177    |
| Android<br>(android.graphics.Color) | 4294690770<br>(0xFFFBC7D2)    |
| YUV                                 | 215.8020, -2.8604,<br>30.8686 |
| Hunter-Lab                          | 81.2461, 15.6539,<br>5.8421   |

# Details

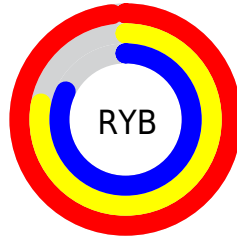
The Hex color **FBC7D2** is a light color, and the websafe version is hex **FFCCCC**. A complement of this color would be **C7FBF0**, and the grayscale version is **D8D8D8**.

A 20% lighter version of the original color is **FFFFFF**, and **C2919C** is the 20% darker color. If you saturate the color by 10%, you get **FBAEBE**, and if you desaturate by 10%, it is **FBE0E6**.

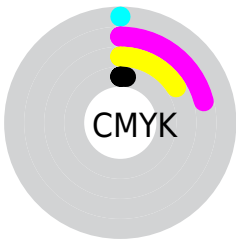
# Distribution



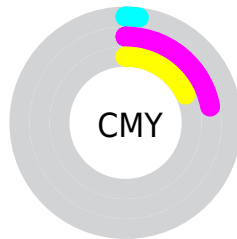
- Red (98%)
- Green (78%)
- Blue (82%)



- Red (98%)
- Yellow (78%)
- Blue (82%)



- Cyan (0%)
- Magenta (21%)
- Yellow (16%)
- Black (2%)



- Cyan (2%)
- Magenta (22%)
- Yellow (18%)

# Brightness & Saturation Gradients

These gradients show how the Hex color FBC7D2 changes by changing the brightness by 10 percent. The first figure shows a shift by +10% for each color and the second figure -10%.

Similar to the brightness gradients but the following saturation gradients show a change of the Hex color FBC7D2 by changing the saturation by 10% instead.



 FBC7D2

FFFFFF


 FBC7D2

 DEACB6

 C2919C

 A67782

 8B5E69

 714650

 582F3A

 401924

 29020F

 000000

 FBC7D2

 FBC7D2

 FBAEBE

 FBE0E6

 FB95AA

 FBF9FA

 FB7C97

 FBFFFF

 FB6383

 FB4A6F

 FB305B

 FB1747

 FB0035

# Harmonies

## Analogous

The Analogous color harmony consists of three colors that are next to each other on the color wheel.



F0C9E5



FBC7D2



FBC9C0

# Triad

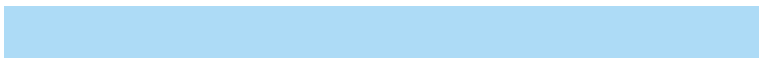
The Triadic color harmony groups three colors that are evenly spaced from another and form a triangle on the color wheel.



FBC7D2



CBDAB5



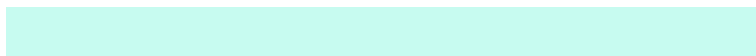
ADDBF6

# Complementary

The Complementary color scheme is a pair of colors which are on the opposite of each other on the color wheel.



FBC7D2



C7FBF0

# Split Complementary

Split-complementary colors differ from the complementary color scheme. The scheme consists of three colors, the original color and two neighbors of the complement color.



A2DEE9



FBC7D2



B6DEC3

# Square

The Square scheme is like the rectangle color scheme, but the four colors are evenly spaced on the color wheel.



FBC7D2



E0D4AE



A6DFD7



C3D5FA

# Rectangle

The Rectangle color scheme consists of four colors that form a rectangle on the color wheel.



FBC7D2



F6CCB6



A6DFD7



A8DCF3

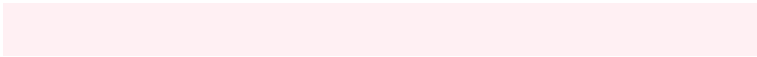


# Sweetspot

The Sweet Spot groups the original color and five complimentary colors.



FBC7D2



FFF0F3



F0C7FB



807778



000000



808080



# Same Dimension

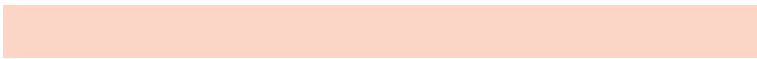
The Same Dimension uses a secret algorithm to generate beautiful new colors.



FBC7D2



FFBFCD



FBD6C7



7D7073



BD0028



3D000D



# Inverse Universe

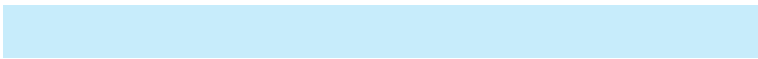
The Inverse Universe completely reimagines the original color for something new.



FBC7D2



FFBFCD



C7ECFB



7D7073



BD0028



3D000D



# Previews

## White Background



This preview shows how the Hex color FBC7D2 looks on a white background.

## Color Contrast Check

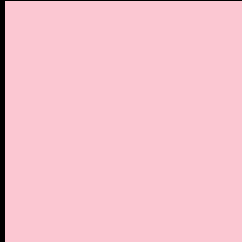
Large Text (above 18pt) WCAG AA × Fail

Any Text WCAG AA × Fail

Large Text (above 18pt) WCAG AAA × Fail

Any Text WCAG AAA × Fail

# Black Background



This preview shows how the Hex color FBC7D2 looks on a black background.

## Color Contrast Check

Large Text (above 18pt) WCAG AA ✓ Pass

Any Text WCAG AA ✓ Pass

Large Text (above 18pt) WCAG AAA ✓ Pass

Any Text WCAG AAA ✓ Pass

If you want to check with other color combinations, try the [Color Contrast Checker](#).



## Hex FBC7D2 Background



This preview shows how black text looks on a background with the Hex color FBC7D2.

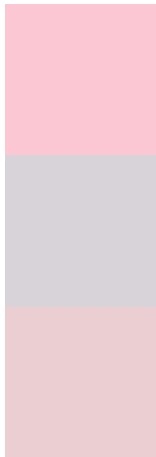


This preview shows how white text looks on a background with the Hex color FBC7D2.

# Color Blindness Simulation

Color vision deficiency is a very complex topic, and I could not describe the different causes any better than Wikipedia does, so if you want to learn more, you should check out their [article about color blindness](#).

## Dichromacy



**Original Color**  
FBC7D2

**Protanopia**  
D7D3D9

**Deuteranopia**  
EACED1

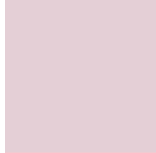


**Tritanopia**  
FBC6D6

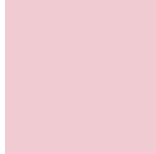
# Trichromacy



**Original Color**  
FBC7D2



**Protanomaly**  
E4CFD6



**Deuteranomaly**  
F0CBD1

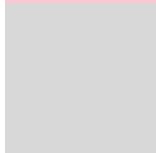


**Tritanomaly**  
FBC6D5

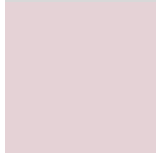
# Monochromacy



**Original Color**  
FBC7D2



**Achromatopsia**  
D8D8D8



**Achromatomaly**  
E5D2D6

# CSS Examples

## Text

The CSS property to change the color of the text to Hex FBC7D2 is called "color". The color property can be set on classes, ids or directly on the HTML element.

This example shows how text in the color #FBC7D2 looks like.

```
.text, #text, p{  
    color:#FBC7D2  
}
```

If you want to add a text shadow in that color use the text-shadow property, you can generate a text shadow directly with our [CSS Text Shadow Generator](#).

Here you see how black text with a 4 pixel #FBC7D2 colored shadow looks like.

```
.shadow{ text-shadow: 4px 4px 2px #FBC7D2
}
```

## Border

The CSS property to change the border of an element to Hex FBC7D2 is called "border". The border property can be set on classes, ids or directly on the HTML element.

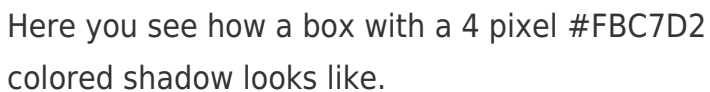
This example shows the color as border, it can be applied via the CSS property "border" or "border-color".

```
.border, #border, table{ border:4px solid
#FBC7D2 }
```

If only the border color should be changed use the property `border-color`.

```
.border{ border-color:#FBC7D2 }
```

If you want to add a box shadow in that color use:



Here you see how a box with a 4 pixel `#FBC7D2` colored shadow looks like.

```
.boxshadow{ -moz-box-shadow:4px 4px 4px  
4px #FBC7D2; -webkit-box-shadow:4px 4px  
4px 4px #FBC7D2; box-shadow:4px 4px 4px  
4px #FBC7D2 }
```

# Background

The CSS property to change the background color of an element to Hex FBC7D2 is called "background". The background property can be set on classes, ids or directly on the HTML element.

```
.background, #background, body{  
background:#FBC7D2 }
```

If only the background color should be changed can be used:

```
.background{ background-color:#FBC7D2 }
```

This example shows the color as background, it is applied via the CSS property "background".

To optimize and compress your CSS code, you can use our [online CSS compressor and optimizer](#) based on csstidy. If you want to create a linear or radial gradient as background or border, check our [CSS Gradient Generator](#).



Hey! You found this booklet interesting? Support Converting Colors with the new Membership Option!

The pro membership hides all ads, plus gives you double the colors in the color bucket, and more awesome pro features!

**[Learn more, Memberships starting at \\$2.50/m!](#)**

**Follow me  
on Twitter!**

@ConvertingColor