

Converting Colors

Hex(FC3D89)

Have a look what the booklet for
Hex(FC3D89) contains.

Hex(FC3D89)	3
<i>Conversions</i>	4
<i>Details</i>	6
<i>Harmonies</i>	11
<i>Previews</i>	23
<i>Color Blindness Simulation</i>	26
<i>CSS Examples</i>	29

Color

Hex(FC3D89)

Conversions

Conversions Part 1

Format	Color
Hex	FC3D89
RGB	252, 61, 137
RGB Percent	99%, 24%, 54%
CMY	0.0118, 0.7608, 0.4627
CMYK	0.00, 0.76, 0.46, 0.01
HSL	336°, 97%, 61%
HSV	336°, 76%, 99%
XYZ	46.3290, 25.8391, 26.2125
YIQ	126.7730, 89.4400, 64.1280

Conversions

Conversions Part 2

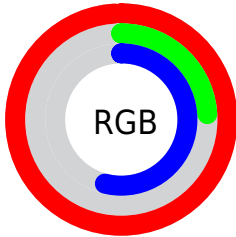
Format	Color
RYB	252, 61, 137
Decimal	16530825
CIELab	57.88, 75.03, 2.97
CIELCh	58, 75.090, 2.266
Yxy	25.8391, 0.4709, 0.2626
Android (android.graphics.Color)	4294720905 (0xFFFC3D89)
YUV	126.7730, 5.0419, 109.8241
Hunter-Lab	50.8322, 73.7306, 5.0085

Details

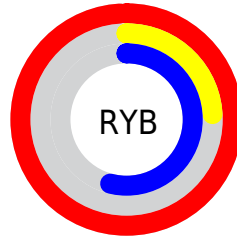
The Hex color **FC3D89** is a dark color, and the websafe version is hex **FF3399**. The color can be described as middle washed rose. A complement of this color would be **3DFCB0**, and the grayscale version is **7F7F7F**.

A 20% lighter version of the original color is **FF7DBE**, and **BD0058** is the 20% darker color. If you saturate the color by 10%, you get **FC247A**, and if you desaturate by 10%, it is **FC5698**.

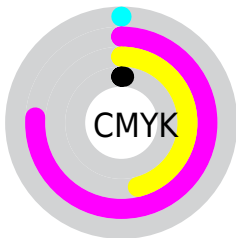
Distribution



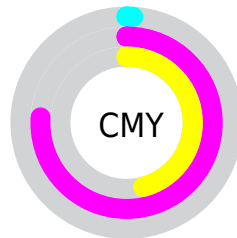
- Red (99%)
- Green (24%)
- Blue (54%)



- Red (99%)
- Yellow (24%)
- Blue (54%)



- Cyan (0%)
- Magenta (76%)
- Yellow (46%)
- Black (1%)



- Cyan (1%)
- Magenta (76%)
- Yellow (46%)

Brightness & Saturation Gradients

These gradients show how the Hex color FC3D89 changes by changing the brightness by 10 percent. The first figure shows a shift by +10% for each color and the second figure -10%.

Similar to the brightness gradients but the following saturation gradients show a change of the Hex color FC3D89 by changing the saturation by 10% instead.

 FC3D89

 FC3D89

FFFFFF

 DD0B70

 FF7DBE

 BD0058

 FF9ADA

 9F0040

 FFB8F6

 80002B

 FFD6FF

 620017

 FFF4FF

 460003

 240001

 000000

 FC3D89

 FC3D89

 FC247A

 FC5698

 FC0B6B

 FC6FA7

 FC0064

 FC89B7

 FCA2C6

 FCBBD5

 FCD4E4

 FCEDF3

 FCFFFF

Harmonies

Analogous

The Analogous color harmony consists of three colors that are next to each other on the color wheel.



DC54C9



FC3D89



F74F49

Triad

The Triadic color harmony groups three colors that are evenly spaced from another and form a triangle on the color wheel.



FC3D89



609B00



00A1FF

Complementary

The Complementary color scheme is a pair of colors which are on the opposite of each other on the color wheel.



FC3D89



3DFCB0

Split Complementary

Split-complementary colors differ from the complementary color scheme. The scheme consists of three colors, the original color and two neighbors of the complement color.



00A8D0



FC3D89



00A44A

Square

The Square scheme is like the rectangle color scheme, but the four colors are evenly spaced on the color wheel.



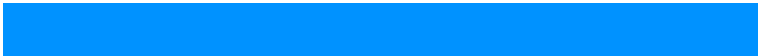
FC3D89



A38A00



00A88E



0092FF

Rectangle

The Rectangle color scheme consists of four colors that form a rectangle on the color wheel.



FC3D89



E4651E



00A88E



00A4F3

Sweetspot

The Sweet Spot groups the original color and five complimentary colors.



FC3D89



FFC4DC



B03DFC



805C6A



000000



808080

Same Dimension

The Same Dimension uses a secret algorithm to generate beautiful new colors.



FC3D89



FF1773



FC503D



7D7075



BD004B



3D0018

Inverse Universe

The Inverse Universe completely reimagines the original color for something new.



FC3D89



FF1773



3DE9FC



7D7075



BD004B



3D0018

Previews

White Background



This preview shows how the Hex color FC3D89 looks on a white background.

Color Contrast Check

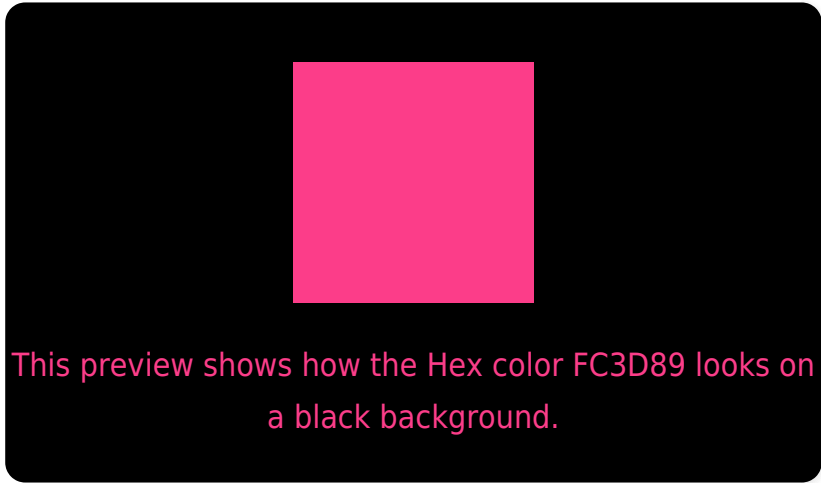
Large Text (above 18pt) WCAG AA ✓ Pass

Any Text WCAG AA × Fail

Large Text (above 18pt) WCAG AAA × Fail

Any Text WCAG AAA × Fail

Black Background



Color Contrast Check

Large Text (above 18pt) WCAG AA ✓ Pass

Any Text WCAG AA ✓ Pass

Large Text (above 18pt) WCAG AAA ✓ Pass

Any Text WCAG AAA × Fail

If you want to check with other color combinations, try the [Color Contrast Checker](#).

Hex FC3D89 Background



This preview shows how black text looks on a background with the Hex color FC3D89.



This preview shows how white text looks on a background with the Hex color FC3D89.

Color Blindness Simulation

Color vision deficiency is a very complex topic, and I could not describe the different causes any better than Wikipedia does, so if you want to learn more, you should check out their [article about color blindness](#).

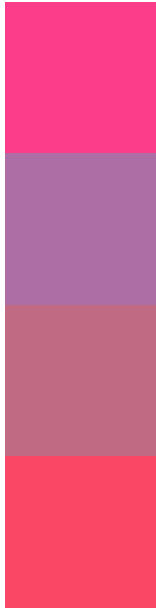
Dichromacy





Tritanopia
F94C50

Trichromacy



Original Color
FC3D89

Protanomaly
AD6EA6

Deuteranomaly
C06B83

Tritanomaly
FA4765

Monochromacy



Original Color
FC3D89

Achromatopsia
7F7F7F

Achromatomaly
AC6783

CSS Examples

Text

The CSS property to change the color of the text to Hex FC3D89 is called "color". The color property can be set on classes, ids or directly on the HTML element.

This example shows how text in the color #FC3D89 looks like.

```
.text, #text, p{  
    color:#FC3D89  
}
```

If you want to add a text shadow in that color use the text-shadow property, you can generate a text shadow directly with our [CSS Text Shadow Generator](#).

Here you see how black text with a 4 pixel #FC3D89 colored shadow looks like.

```
.shadow{ text-shadow: 4px 4px 2px #FC3D89
}
```

Border

The CSS property to change the border of an element to Hex FC3D89 is called "border". The border property can be set on classes, ids or directly on the HTML element.

This example shows the color as border, it can be applied via the CSS property "border" or "border-color".

```
.border, #border, table{ border:4px solid
#FC3D89 }
```

If only the border color should be changed use the property `border-color`.

```
.border{ border-color:#FC3D89 }
```

If you want to add a box shadow in that color use:

Here you see how a box with a 4 pixel #FC3D89 colored shadow looks like.

```
.boxshadow{ -moz-box-shadow:4px 4px 4px  
4px #FC3D89; -webkit-box-shadow:4px 4px  
4px 4px #FC3D89; box-shadow:4px 4px 4px  
4px #FC3D89 }
```

Background

The CSS property to change the background color of an element to Hex FC3D89 is called "background". The background property can be set on classes, ids or directly on the HTML element.

```
.background, #background, body{  
background:#FC3D89 }
```

If only the background color should be changed can be used:

```
.background{ background-color:#FC3D89 }
```

This example shows the color as background, it is applied via the CSS property "background".

To optimize and compress your CSS code, you can use our [online CSS compressor and optimizer](#) based on csstidy. If you want to create a linear or radial gradient as background or border, check our [CSS Gradient Generator](#).

Hey! You found this booklet interesting? Support Converting Colors with the new Membership Option!

The pro membership hides all ads, plus gives you double the colors in the color bucket, and more awesome pro features!

[Learn more, Memberships starting at \\$2.50/m!](#)

**Follow me
on Twitter!**

@ConvertingColor