

Converting Colors

Hex(FC407D)

Have a look what the booklet for
Hex(FC407D) contains.

Hex(FC407D)	3
<i>Conversions</i>	4
<i>Details</i>	6
<i>Harmonies</i>	11
<i>Previews</i>	23
<i>Color Blindness Simulation</i>	26
<i>CSS Examples</i>	29

Color

Hex(FC407D)

Conversions

Conversions Part 1

Format	Color
Hex	FC407D
RGB	252, 64, 125
RGB Percent	99%, 25%, 49%
CMY	0.0118, 0.7490, 0.5098
CMYK	0.00, 0.75, 0.50, 0.01
HSL	341°, 97%, 62%
HSV	341°, 75%, 99%
XYZ	45.6800, 25.8429, 21.9826
YIQ	127.1660, 92.4670, 58.8270

Conversions

Conversions Part 2

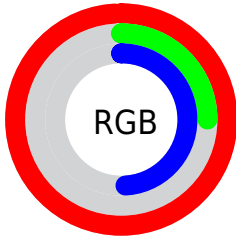
Format	Color
RYB	252, 64, 125
Decimal	16531581
CIELab	57.89, 73.17, 10.06
CIELCh	58, 73.859, 7.832
Yxy	25.8429, 0.4885, 0.2764
Android (android.graphics.Color)	4294721661 (0xFFFC407D)
YUV	127.1660, -1.0678, 109.4794
Hunter-Lab	50.8359, 71.4330, 9.9468

Details

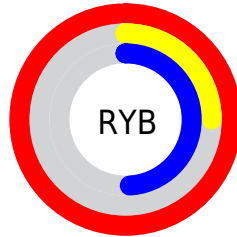
The Hex color **FC407D** is a dark color, and the websafe version is hex **FF3366**. The color can be described as middle washed rose. A complement of this color would be **40FCBF**, and the grayscale version is **7F7F7F**.

A 20% lighter version of the original color is **FF7FB1**, and **BD004D** is the 20% darker color. If you saturate the color by 10%, you get **FC276C**, and if you desaturate by 10%, it is **FC598E**.

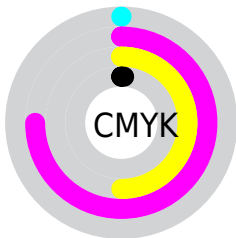
Distribution



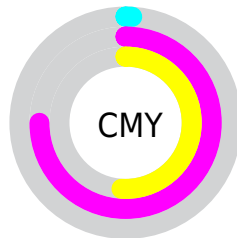
- Red (99%)
- Green (25%)
- Blue (49%)



- Red (99%)
- Yellow (25%)
- Blue (49%)



- Cyan (0%)
- Magenta (75%)
- Yellow (50%)
- Black (1%)



- Cyan (1%)
- Magenta (75%)
- Yellow (51%)

Brightness & Saturation Gradients

These gradients show how the Hex color FC407D changes by changing the brightness by 10 percent. The first figure shows a shift by +10% for each color and the second figure -10%.

Similar to the brightness gradients but the following saturation gradients show a change of the Hex color FC407D by changing the saturation by 10% instead.

 FC407D

 FC407D

FFFFFF

 DC1464

 FF7FB1

 BD004D

 FF9CCD

 9E0036

 FFBAE9

 7F0022

 FFD8FF

 61000A

 FFF6FF

 440003

 230001

 000000

 FC407D

 FC407D

 FC276C

 FC598E

 FC0E5B

 FC729F

 FC0052

 FC8CB0

 FCA5C1

 FCBED2

 FCD7E3

 FCF0F4

 FCFFFF

Harmonies

Analogous

The Analogous color harmony consists of three colors that are next to each other on the color wheel.



E450BD



FC407D



F1563F

Triad

The Triadic color harmony groups three colors that are evenly spaced from another and form a triangle on the color wheel.



FC407D



519D0B



009FFF

Complementary

The Complementary color scheme is a pair of colors which are on the opposite of each other on the color wheel.



FC407D



40FCBF

Split Complementary

Split-complementary colors differ from the complementary color scheme. The scheme consists of three colors, the original color and two neighbors of the complement color.



00A7D9



FC407D



00A557

Square

The Square scheme is like the rectangle color scheme, but the four colors are evenly spaced on the color wheel.



FC407D



988E00



00A89B



008EFF

Rectangle

The Rectangle color scheme consists of four colors that form a rectangle on the color wheel.



FC407D



DC6C12



00A89B



00A2F8

Sweetspot

The Sweet Spot groups the original color and five complimentary colors.



FC407D



FFC7D9



BD40FC



805E69



000000



808080

Same Dimension

The Same Dimension uses a secret algorithm to generate beautiful new colors.



FC407D



FF1964



FC5F40



7D7075



BD003D



3D0014

Inverse Universe

The Inverse Universe completely reimagines the original color for something new.



FC407D



FF1964



40DDFC



7D7075



BD003D



3D0014

Previews

White Background



This preview shows how the Hex color FC407D looks on a white background.

Color Contrast Check

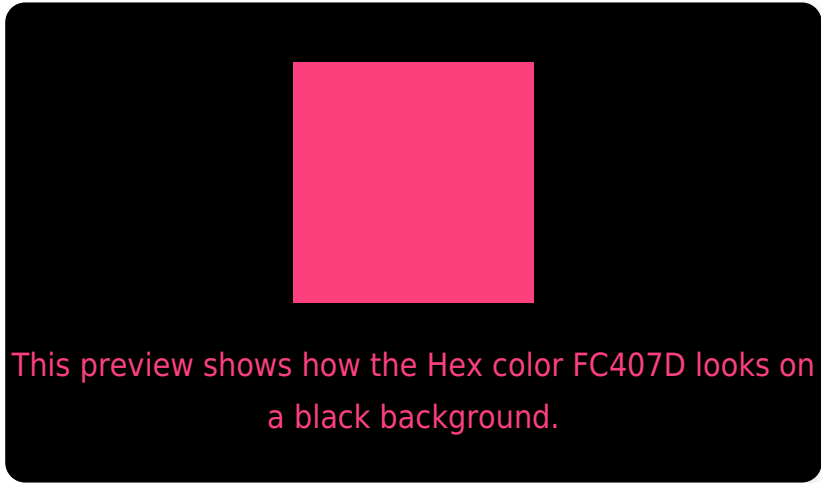
Large Text (above 18pt) WCAG AA ✓ Pass

Any Text WCAG AA × Fail

Large Text (above 18pt) WCAG AAA × Fail

Any Text WCAG AAA × Fail

Black Background



Color Contrast Check

Large Text (above 18pt) WCAG AA ✓ Pass

Any Text WCAG AA ✓ Pass

Large Text (above 18pt) WCAG AAA ✓ Pass

Any Text WCAG AAA × Fail

If you want to check with other color combinations, try the [Color Contrast Checker](#).

Hex FC407D Background



This preview shows how black text looks on a background with the Hex color FC407D.



This preview shows how white text looks on a background with the Hex color FC407D.

Color Blindness Simulation

Color vision deficiency is a very complex topic, and I could not describe the different causes any better than Wikipedia does, so if you want to learn more, you should check out their [article about color blindness](#).

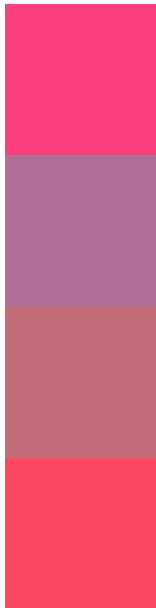
Dichromacy





Tritanopia
FA4B4F

Trichromacy



Original Color
FC407D

Protanomaly
B16F96

Deuteranomaly
C26D77

Tritanomaly
FB4760

Monochromacy



Original Color
FC407D

Achromatopsia
7F7F7F

Achromatomaly
AC687E

CSS Examples

Text

The CSS property to change the color of the text to Hex FC407D is called "color". The color property can be set on classes, ids or directly on the HTML element.

This example shows how text in the color #FC407D looks like.

```
.text, #text, p{  
    color:#FC407D  
}
```

If you want to add a text shadow in that color use the text-shadow property, you can generate a text shadow directly with our [CSS Text Shadow Generator](#).

Here you see how black text with a 4 pixel #FC407D colored shadow looks like.

```
.shadow{ text-shadow: 4px 4px 2px #FC407D }  
}
```

Border

The CSS property to change the border of an element to Hex FC407D is called "border". The border property can be set on classes, ids or directly on the HTML element.

This example shows the color as border, it can be applied via the CSS property "border" or "border-color".

```
.border, #border, table{ border:4px solid #FC407D }  
}
```

If only the border color should be changed use the property `border-color`.

```
.border{ border-color:#FC407D }
```

If you want to add a box shadow in that color use:

Here you see how a box with a 4 pixel #FC407D colored shadow looks like.

```
.boxshadow{ -moz-box-shadow:4px 4px 4px  
4px #FC407D; -webkit-box-shadow:4px 4px  
4px 4px #FC407D; box-shadow:4px 4px 4px  
4px #FC407D }
```

Background

The CSS property to change the background color of an element to Hex FC407D is called "background". The background property can be set on classes, ids or directly on the HTML element.

```
.background, #background, body{  
background:#FC407D }
```

If only the background color should be changed can be used:

```
.background{ background-color:#FC407D }
```

This example shows the color as background, it is applied via the CSS property "background".

To optimize and compress your CSS code, you can use our [online CSS compressor and optimizer](#) based on csstidy. If you want to create a linear or radial gradient as background or border, check our [CSS Gradient Generator](#).

Hey! You found this booklet interesting? Support Converting Colors with the new Membership Option!

The pro membership hides all ads, plus gives you double the colors in the color bucket, and more awesome pro features!

[Learn more, Memberships starting at \\$2.50/m!](#)

**Follow me
on Twitter!**

@ConvertingColor