

# Converting Colors

Hex(FC4677)

Have a look what the booklet for  
Hex(FC4677) contains.

<b>Hex(FC4677)</b> .....	3
<b><i>Conversions</i></b> .....	4
<b><i>Details</i></b> .....	6
<b><i>Harmonies</i></b> .....	11
<b><i>Previews</i></b> .....	23
<b><i>Color Blindness Simulation</i></b> .....	26
<b><i>CSS Examples</i></b> .....	29

# Color

**Hex(FC4677)**

# Conversions

## Conversions Part 1

<b>Format</b>	<b>Color</b>
Hex	FC4677
RGB	252, 70, 119
RGB Percent	99%, 27%, 47%
CMY	0.0118, 0.7255, 0.5333
CMYK	0.00, 0.72, 0.53, 0.01
HSL	344°, 97%, 63%
HSV	344°, 72%, 99%
XYZ	45.6648, 26.4077, 20.1432
YIQ	130.0040, 92.7430, 53.8230

# Conversions

## Conversions Part 2

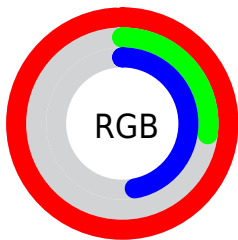
<b>Format</b>	<b>Color</b>
<b>R<sub>YB</sub></b>	252, 70, 119
Decimal	16533111
CIE <sub>Lab</sub>	58.42, 70.82, 14.35
CIE <sub>LCh</sub>	58, 72.263, 11.457
Yxy	26.4077, 0.4952, 0.2864
Android (android.graphics.Color)	4294723191 (0xFFFC4677)
YUV	130.0040, -5.4250, 106.9905
Hunter-Lab	51.3884, 68.6892, 12.7315

# Details

The Hex color **FC4677** is a dark color, and the websafe version is hex **FF3366**. The color can be described as middle washed rose. A complement of this color would be **46FCCB**, and the grayscale version is **828282**.

A 20% lighter version of the original color is **FF83AB**, and **BD0047** is the 20% darker color. If you saturate the color by 10%, you get **FC2D65**, and if you desaturate by 10%, it is **FC5F89**.

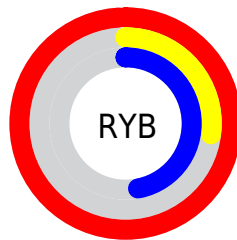
# Distribution



Red (99%)

Green (27%)

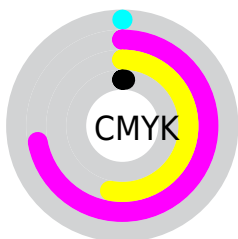
Blue (47%)



Red (99%)

Yellow (27%)

Blue (47%)

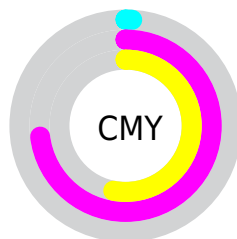


Cyan (0%)

Magenta (72%)

Yellow (53%)

Black (1%)



Cyan (1%)

Magenta (73%)

Yellow (53%)

# Brightness & Saturation Gradients

These gradients show how the Hex color FC4677 changes by changing the brightness by 10 percent. The first figure shows a shift by +10% for each color and the second figure -10%.

Similar to the brightness gradients but the following saturation gradients show a change of the Hex color FC4677 by changing the saturation by 10% instead.



 FC4677

 FC4677

FFFFFF

 DC205E

 FF83AB

 BD0047

 FFA0C6

 9E0031

 FFBEE2

 7F001D

 FFDBFF

 610002

 FFF9FF

 440003

 230001

 000000

 FC4677

 FC4677

 FC2D65

 FC5F89

 FC1452

 FC789C

 FC0044

 FC92AE

 FCABC1

 FCC4D3

 FCDDE5

 FCF6F8

 FCFFFF

# Harmonies

## Analogous

The Analogous color harmony consists of three colors that are next to each other on the color wheel.



E950B6



FC4677



EE5D3B

# Triad

The Triadic color harmony groups three colors that are evenly spaced from another and form a triangle on the color wheel.



FC4677



499F1F



009EFF

# Complementary

The Complementary color scheme is a pair of colors which are on the opposite of each other on the color wheel.



FC4677



46FCCB

# Split Complementary

Split-complementary colors differ from the complementary color scheme. The scheme consists of three colors, the original color and two neighbors of the complement color.



00A7DF



FC4677



00A662

# Square

The Square scheme is like the rectangle color scheme, but the four colors are evenly spaced on the color wheel.



FC4677



939100



00A9A4



008CFF

# Rectangle

The Rectangle color scheme consists of four colors that form a rectangle on the color wheel.



FC4677



D7710E



00A9A4



00A2FC



# Sweetspot

The Sweet Spot groups the original color and five complimentary colors.



FC4677



FFC7D6



C846FC



805E67



000000



808080



# Same Dimension

The Same Dimension uses a secret algorithm to generate beautiful new colors.



FC4677



FF215D



FC6D46



7D7074



BD0033



3D0010



# Inverse Universe

The Inverse Universe completely reimagines the original color for something new.



FC4677



FF215D



46D5FC



7D7074



BD0033



3D0010



# Previews

## White Background



This preview shows how the Hex color FC4677 looks on a white background.

## Color Contrast Check

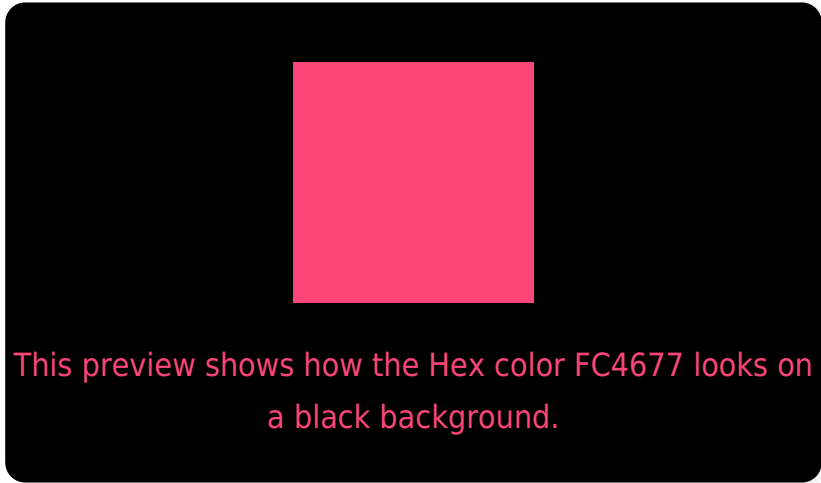
Large Text (above 18pt) WCAG AA ✓ Pass

Any Text WCAG AA × Fail

Large Text (above 18pt) WCAG AAA × Fail

Any Text WCAG AAA × Fail

# Black Background



## Color Contrast Check

Large Text (above 18pt) WCAG AA ✓ Pass

Any Text WCAG AA ✓ Pass

Large Text (above 18pt) WCAG AAA ✓ Pass

Any Text WCAG AAA × Fail

If you want to check with other color combinations, try the [Color Contrast Checker](#).



## Hex FC4677 Background



This preview shows how black text looks on a background with the Hex color FC4677.



This preview shows how white text looks on a background with the Hex color FC4677.

# Color Blindness Simulation

Color vision deficiency is a very complex topic, and I could not describe the different causes any better than Wikipedia does, so if you want to learn more, you should check out their [article about color blindness](#).

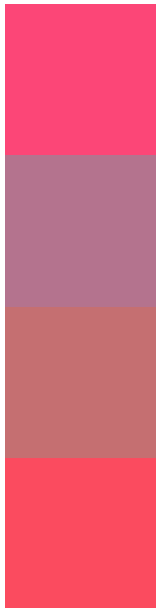
## Dichromacy





**Tritanopia**  
FA4E52

# Trichromacy



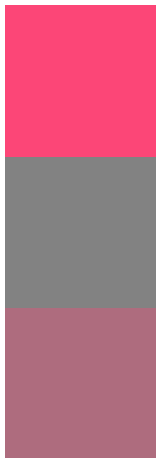
**Original Color**  
FC4677

**Protanomaly**  
B4738E

**Deuteranomaly**  
C56F71

**Tritanomaly**  
FB4B5F

# Monochromacy



**Original Color**  
FC4677

**Achromatopsia**  
828282

**Achromatomaly**  
AE6C7E

# CSS Examples

## Text

The CSS property to change the color of the text to Hex FC4677 is called "color". The color property can be set on classes, ids or directly on the HTML element.

This example shows how text in the color #FC4677 looks like.

```
.text, #text, p{  
    color:#FC4677  
}
```

If you want to add a text shadow in that color use the text-shadow property, you can generate a text shadow directly with our [CSS Text Shadow Generator](#).

Here you see how black text with a 4 pixel #FC4677 colored shadow looks like.

```
.shadow{ text-shadow: 4px 4px 2px #FC4677
}
```

## Border

The CSS property to change the border of an element to Hex FC4677 is called "border". The border property can be set on classes, ids or directly on the HTML element.

This example shows the color as border, it can be applied via the CSS property "border" or "border-color".

```
.border, #border, table{ border:4px solid
#FC4677 }
```

If only the border color should be changed use the property `border-color`.

```
.border{ border-color:#FC4677 }
```

If you want to add a box shadow in that color use:

Here you see how a box with a 4 pixel #FC4677 colored shadow looks like.

```
.boxshadow{ -moz-box-shadow:4px 4px 4px  
4px #FC4677; -webkit-box-shadow:4px 4px  
4px 4px #FC4677; box-shadow:4px 4px 4px  
4px #FC4677 }
```

# Background

The CSS property to change the background color of an element to Hex FC4677 is called "background". The background property can be set on classes, ids or directly on the HTML element.

```
.background, #background, body{  
background:#FC4677 }
```

If only the background color should be changed can be used:

```
.background{ background-color:#FC4677 }
```

This example shows the color as background, it is applied via the CSS property "background".

To optimize and compress your CSS code, you can use our [online CSS compressor and optimizer](#) based on csstidy. If you want to create a linear or radial gradient as background or border, check our [CSS Gradient Generator](#).



Hey! You found this booklet interesting? Support Converting Colors with the new Membership Option!

The pro membership hides all ads, plus gives you double the colors in the color bucket, and more awesome pro features!

**[Learn more, Memberships starting at \\$2.50/m!](#)**

**Follow me  
on Twitter!**

@ConvertingColor