

# Converting Colors

Hex(FC4E7A)

Have a look what the booklet for  
Hex(FC4E7A) contains.

<b>Hex(FC4E7A)</b> .....	3
<i><b>Conversions</b></i> .....	4
<i><b>Details</b></i> .....	6
<i><b>Harmonies</b></i> .....	11
<i><b>Previews</b></i> .....	23
<i><b>Color Blindness Simulation</b></i> .....	26
<i><b>CSS Examples</b></i> .....	29

**Color**

**Hex(FC4E7A)**

# Conversions

## Conversions Part 1

Format	Color
Hex	FC4E7A
RGB	252, 78, 122
RGB Percent	99%, 31%, 48%
CMY	0.0118, 0.6941, 0.5216
CMYK	0.00, 0.69, 0.52, 0.01
HSL	345°, 97%, 65%
HSV	345°, 69%, 99%
XYZ	46.3821, 27.5494, 21.2853
YIQ	135.0420, 89.5800, 50.5720

# Conversions

## Conversions Part 2

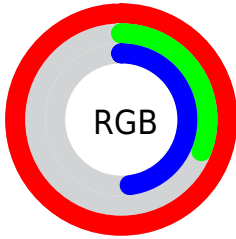
<b>Format</b>	<b>Color</b>
<b>R<sub>YB</sub></b>	252, 78, 122
Decimal	16535162
CIE <sub>Lab</sub>	59.48, 68.31, 14.06
CIE <sub>LCh</sub>	59, 69.738, 11.633
Yxy	27.5494, 0.4871, 0.2893
Android (android.graphics.Color)	4294725242 (0xFFFC4E7A)
YUV	135.0420, -6.4297, 102.5722
Hunter-Lab	52.4875, 65.8837, 12.6973

# Details

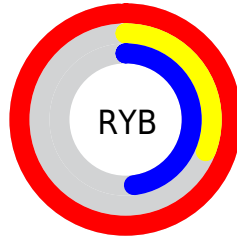
The Hex color **FC4E7A** is a dark color, and the websafe version is hex **FF3366**. The color can be described as middle washed rose. A complement of this color would be **4EFCDD**, and the grayscale version is **878787**.

A 20% lighter version of the original color is **FF89AE**, and **BD004A** is the 20% darker color. If you saturate the color by 10%, you get **FC3567**, and if you desaturate by 10%, it is **FC678D**.

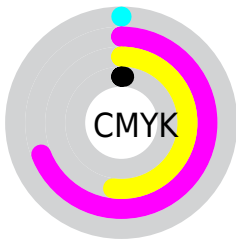
# Distribution



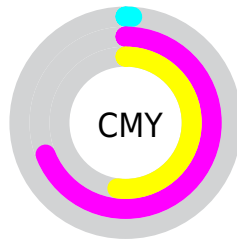
- Red (99%)
- Green (31%)
- Blue (48%)



- Red (99%)
- Yellow (31%)
- Blue (48%)



- Cyan (0%)
- Magenta (69%)
- Yellow (52%)
- Black (1%)



- Cyan (1%)
- Magenta (69%)
- Yellow (52%)

# Brightness & Saturation Gradients

These gradients show how the Hex color FC4E7A changes by changing the brightness by 10 percent. The first figure shows a shift by +10% for each color and the second figure -10%.

Similar to the brightness gradients but the following saturation gradients show a change of the Hex color FC4E7A by changing the saturation by 10% instead.



 FC4E7A

 FC4E7A

FFFFFF

 DD2C61

 FF89AE

 BD004A

 FFA6C9

 9F0034

 FFC4E5

 80001F

 FFE1FF

 620006

 460003

 250001

 000000

 FC4E7A

 FC4E7A

 FC3567

 FC678D

 FC1C54

 FC80A0

 FC0242

 FC9AB2

 FC0040

 FCB3C5

 FCCCD8

 FCE5EB

 FCFEFE

 FCFFFF

# Harmonies

## Analogous

The Analogous color harmony consists of three colors that are next to each other on the color wheel.



E957B7



FC4E7A



EF6340

# Triad

The Triadic color harmony groups three colors that are evenly spaced from another and form a triangle on the color wheel.



FC4E7A



50A228



00A0FF

# Complementary

The Complementary color scheme is a pair of colors which are on the opposite of each other on the color wheel.



FC4E7A



4EFC00

# Split Complementary

Split-complementary colors differ from the complementary color scheme. The scheme consists of three colors, the original color and two neighbors of the complement color.



00A9E0



FC4E7A



00A966

# Square

The Square scheme is like the rectangle color scheme, but the four colors are evenly spaced on the color wheel.



FC4E7A



969400



00ABA6



198FFF

# Rectangle

The Rectangle color scheme consists of four colors that form a rectangle on the color wheel.



FC4E7A



D8751A



00ABA6



00A4FB



# Sweetspot

The Sweet Spot groups the original color and five complimentary colors.



FC4E7A



FFC9D7



CE4EFC



806068



000000



808080



# Same Dimension

The Same Dimension uses a secret algorithm to generate beautiful new colors.



FC4E7A



FF2B61



FC774E



7D7074



BD0030



3D000F



# Inverse Universe

The Inverse Universe completely reimagines the original color for something new.



FC4E7A



FF2B61



4ED3FC



7D7074



BD0030

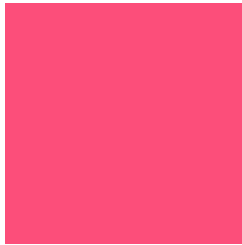


3D000F



# Previews

## White Background



This preview shows how the Hex color FC4E7A looks on a white background.

## Color Contrast Check

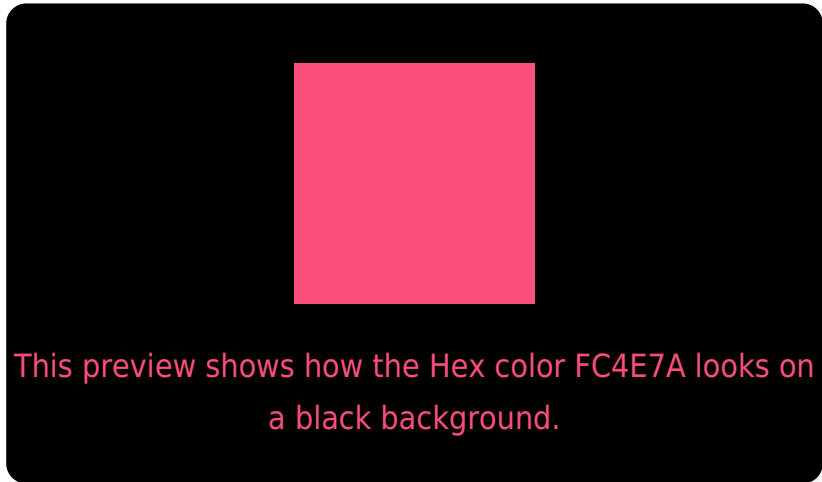
Large Text (above 18pt) WCAG AA ✓ Pass

Any Text WCAG AA × Fail

Large Text (above 18pt) WCAG AAA × Fail

Any Text WCAG AAA × Fail

# Black Background



## Color Contrast Check

Large Text (above 18pt) WCAG AA ✓ Pass

Any Text WCAG AA ✓ Pass

Large Text (above 18pt) WCAG AAA ✓ Pass

Any Text WCAG AAA × Fail

If you want to check with other color combinations, try the [Color Contrast Checker](#).



## Hex FC4E7A Background



This preview shows how black text looks on a background with the Hex color FC4E7A.



This preview shows how white text looks on a background with the Hex color FC4E7A.

# Color Blindness Simulation

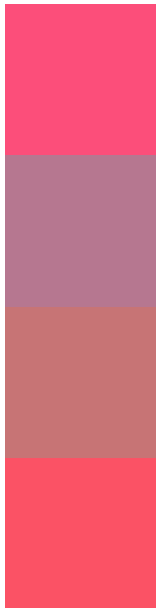
Color vision deficiency is a very complex topic, and I could not describe the different causes any better than Wikipedia does, so if you want to learn more, you should check out their [article about color blindness](#).

## Dichromacy





# Trichromacy



**Original Color**  
FC4E7A

**Protanomaly**  
B67790

**Deuteranomaly**  
C77475

**Tritanomaly**  
FB5265

# Monochromacy



**Original Color**  
FC4E7A

**Achromatopsia**  
878787

**Achromatomaly**  
B27282

# CSS Examples

## Text

The CSS property to change the color of the text to Hex FC4E7A is called "color". The color property can be set on classes, ids or directly on the HTML element.

This example shows how text in the color #FC4E7A looks like.

```
.text, #text, p{  
    color:#FC4E7A  
}
```

If you want to add a text shadow in that color use the text-shadow property, you can generate a text shadow directly with our [CSS Text Shadow Generator](#).

Here you see how black text with a 4 pixel #FC4E7A colored shadow looks like.

```
.shadow{ text-shadow: 4px 4px 2px #FC4E7A
}
```

## Border

The CSS property to change the border of an element to Hex FC4E7A is called "border". The border property can be set on classes, ids or directly on the HTML element.

This example shows the color as border, it can be applied via the CSS property "border" or "border-color".

```
.border, #border, table{ border:4px solid
#FC4E7A }
```

If only the border color should be changed use the property `border-color`.

```
.border{ border-color:#FC4E7A }
```

If you want to add a box shadow in that color use:

Here you see how a box with a 4 pixel #FC4E7A colored shadow looks like.

```
.boxshadow{ -moz-box-shadow:4px 4px 4px  
4px #FC4E7A; -webkit-box-shadow:4px 4px  
4px 4px #FC4E7A; box-shadow:4px 4px 4px  
4px #FC4E7A }
```

# Background

The CSS property to change the background color of an element to Hex FC4E7A is called "background". The background property can be set on classes, ids or directly on the HTML element.

```
.background, #background, body{  
background:#FC4E7A }
```

If only the background color should be changed can be used:

```
.background{ background-color:#FC4E7A }
```

This example shows the color as background, it is applied via the CSS property "background".

To optimize and compress your CSS code, you can use our [online CSS compressor and optimizer](#) based on csstidy. If you want to create a linear or radial gradient as background or border, check our [CSS Gradient Generator](#).



Hey! You found this booklet interesting? Support Converting Colors with the new Membership Option!

The pro membership hides all ads, plus gives you double the colors in the color bucket, and more awesome pro features!

**[Learn more, Memberships starting at \\$2.50/m!](#)**

**Follow me  
on Twitter!**

@ConvertingColor