

# Converting Colors

Hex(FC527A)

Have a look what the booklet for  
Hex(FC527A) contains.

<b>Hex(FC527A)</b> .....	3
<b><i>Conversions</i></b> .....	4
<b><i>Details</i></b> .....	6
<b><i>Harmonies</i></b> .....	11
<b><i>Previews</i></b> .....	23
<b><i>Color Blindness Simulation</i></b> .....	26
<b><i>CSS Examples</i></b> .....	29

# **Color**

**Hex(FC527A)**

# Conversions

## Conversions Part 1

Format	Color
Hex	FC527A
RGB	252, 82, 122
RGB Percent	99%, 32%, 48%
CMY	0.0118, 0.6784, 0.5216
CMYK	0.00, 0.67, 0.52, 0.01
HSL	346°, 97%, 65%
HSV	346°, 67%, 99%
XYZ	46.6750, 28.1352, 21.3829
YIQ	137.3900, 88.4800, 48.4800

# Conversions

## Conversions Part 2

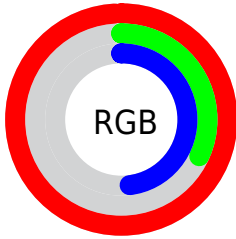
Format	Color
R <sub>Y</sub> B	252, 82, 122
Decimal	16536186
CIE Lab	60.01, 66.84, 14.80
CIE LCh	60, 68.461, 12.486
Yxy	28.1352, 0.4852, 0.2925
Android (android.graphics.Color)	4294726266 (0xFFFC527A)
YUV	137.3900, -7.5873, 100.5130
Hunter-Lab	53.0426, 64.2472, 13.2284

# Details

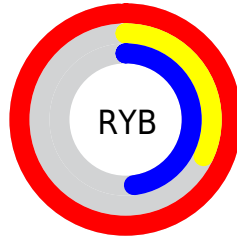
The Hex color **FC527A** is a light color, and the websafe version is hex **FF3366**. The color can be described as light muted rose. A complement of this color would be **52FCD4**, and the grayscale version is **898989**.

A 20% lighter version of the original color is **FF8DAE**, and **BD004A** is the 20% darker color. If you saturate the color by 10%, you get **FC3967**, and if you desaturate by 10%, it is **FC6B8D**.

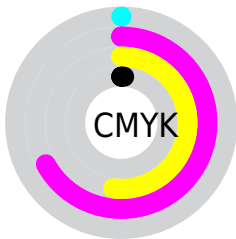
# Distribution



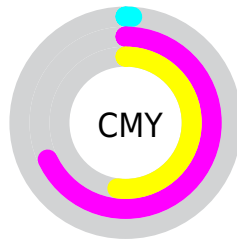
- Red (99%)
- Green (32%)
- Blue (48%)



- Red (99%)
- Yellow (32%)
- Blue (48%)



- Cyan (0%)
- Magenta (67%)
- Yellow (52%)
- Black (1%)



- Cyan (1%)
- Magenta (68%)
- Yellow (52%)

# Brightness & Saturation Gradients

These gradients show how the Hex color FC527A changes by changing the brightness by 10 percent. The first figure shows a shift by +10% for each color and the second figure -10%.

Similar to the brightness gradients but the following saturation gradients show a change of the Hex color FC527A by changing the saturation by 10% instead.



 FC527A

 FC527A

FFFFFF

 DD3261

 FF8DAE

 BD004A

 FFAAC9

 9F0034

 FFC7E5

 80001F

 FFE4FF

 620006

 460003

 250001

 000000

 FC527A

 FC527A

 FC3967

 FC6B8D

 FC2053

 FC84A1

 FC0640

 FC9EB4

 FC003B

 FCB7C7

 FCD0DA

 FCE9EE

 FCFFFF

# Harmonies

## Analogous

The Analogous color harmony consists of three colors that are next to each other on the color wheel.



EA59B6



FC527A



EE6641

# Triad

The Triadic color harmony groups three colors that are evenly spaced from another and form a triangle on the color wheel.



FC527A



50A32E



00A1FF

# Complementary

The Complementary color scheme is a pair of colors which are on the opposite of each other on the color wheel.



FC527A



52FCD4

# Split Complementary

Split-complementary colors differ from the complementary color scheme. The scheme consists of three colors, the original color and two neighbors of the complement color.



00AAE1



FC527A



00AA6A

# Square

The Square scheme is like the rectangle color scheme, but the four colors are evenly spaced on the color wheel.



FC527A



969600



00ACA9



318FFF

# Rectangle

The Rectangle color scheme consists of four colors that form a rectangle on the color wheel.



FC527A



D8781D



00ACA9



00A5FB



# Sweetspot

The Sweet Spot groups the original color and five complimentary colors.



FC527A



FFCCD8



D252FC



806168



000000



808080



# Same Dimension

The Same Dimension uses a secret algorithm to generate beautiful new colors.



FC527A



FF3061



FC7D52



7D7073



BD002C



3D000E



# Inverse Universe

The Inverse Universe completely reimagines the original color for something new.



FC527A



FF3061



52D2FC



7D7073



BD002C

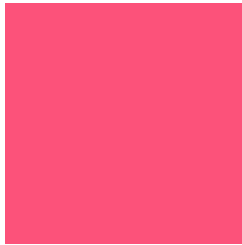


3D000E



# Previews

## White Background



This preview shows how the Hex color FC527A looks on a white background.

## Color Contrast Check

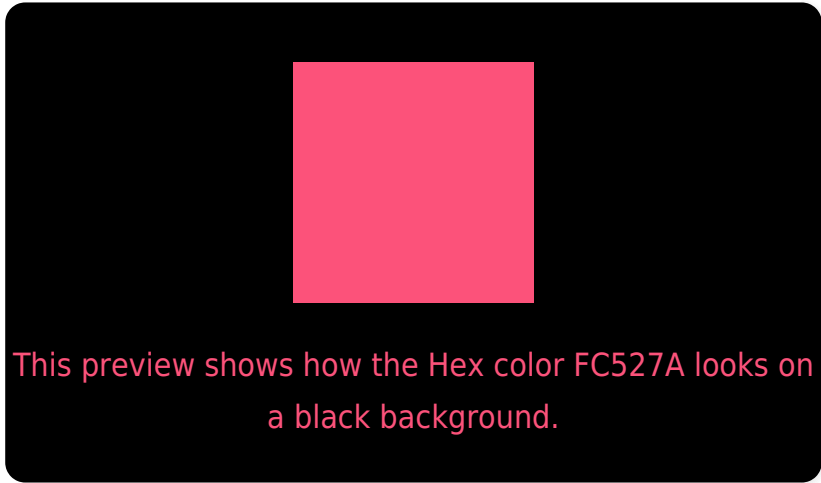
Large Text (above 18pt) WCAG AA ✓ Pass

Any Text WCAG AA × Fail

Large Text (above 18pt) WCAG AAA × Fail

Any Text WCAG AAA × Fail

# Black Background



## Color Contrast Check

Large Text (above 18pt) WCAG AA ✓ Pass

Any Text WCAG AA ✓ Pass

Large Text (above 18pt) WCAG AAA ✓ Pass

Any Text WCAG AAA × Fail

If you want to check with other color combinations, try the [Color Contrast Checker](#).



## Hex FC527A Background



This preview shows how black text looks on a background with the Hex color FC527A.



This preview shows how white text looks on a background with the Hex color FC527A.

# Color Blindness Simulation

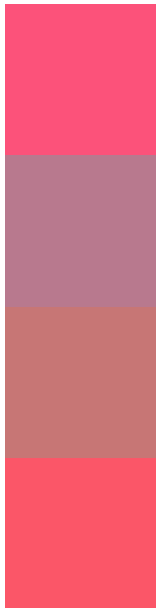
Color vision deficiency is a very complex topic, and I could not describe the different causes any better than Wikipedia does, so if you want to learn more, you should check out their [article about color blindness](#).

## Dichromacy





# Trichromacy



**Original Color**  
FC527A

**Protanomaly**  
B8798E

**Deuteranomaly**  
C77675

**Tritanomaly**  
FB5668

# Monochromacy



**Original Color**  
FC527A

**Achromatopsia**  
898989

**Achromatomaly**  
B37584

# CSS Examples

## Text

The CSS property to change the color of the text to Hex FC527A is called "color". The color property can be set on classes, ids or directly on the HTML element.

This example shows how text in the color #FC527A looks like.

```
.text, #text, p{  
    color:#FC527A  
}
```

If you want to add a text shadow in that color use the text-shadow property, you can generate a text shadow directly with our [CSS Text Shadow Generator](#).

Here you see how black text with a 4 pixel #FC527A colored shadow looks like.

```
.shadow{ text-shadow: 4px 4px 2px #FC527A
}
```

## Border

The CSS property to change the border of an element to Hex FC527A is called "border". The border property can be set on classes, ids or directly on the HTML element.

This example shows the color as border, it can be applied via the CSS property "border" or "border-color".

```
.border, #border, table{ border:4px solid
#FC527A }
```

If only the border color should be changed use the property `border-color`.

```
.border{ border-color:#FC527A }
```

If you want to add a box shadow in that color use:

Here you see how a box with a 4 pixel #FC527A colored shadow looks like.

```
.boxshadow{ -moz-box-shadow:4px 4px 4px  
4px #FC527A; -webkit-box-shadow:4px 4px  
4px 4px #FC527A; box-shadow:4px 4px 4px  
4px #FC527A }
```

# Background

The CSS property to change the background color of an element to Hex FC527A is called "background". The background property can be set on classes, ids or directly on the HTML element.

```
.background, #background, body{  
background:#FC527A }
```

If only the background color should be changed can be used:

```
.background{ background-color:#FC527A }
```

This example shows the color as background, it is applied via the CSS property "background".

To optimize and compress your CSS code, you can use our [online CSS compressor and optimizer](#) based on csstidy. If you want to create a linear or radial gradient as background or border, check our [CSS Gradient Generator](#).



Hey! You found this booklet interesting? Support Converting Colors with the new Membership Option!

The pro membership hides all ads, plus gives you double the colors in the color bucket, and more awesome pro features!

**[Learn more, Memberships starting at \\$2.50/m!](#)**

**Follow me  
on Twitter!**

@ConvertingColor