

# Converting Colors

Hex(FC5B7D)

Have a look what the booklet for  
Hex(FC5B7D) contains.

<b>Hex(FC5B7D)</b> .....	3
<i><b>Conversions</b></i> .....	4
<i><b>Details</b></i> .....	6
<i><b>Harmonies</b></i> .....	11
<i><b>Previews</b></i> .....	23
<i><b>Color Blindness Simulation</b></i> .....	26
<i><b>CSS Examples</b></i> .....	29

# Color

**Hex(FC5B7D)**

# Conversions

## Conversions Part 1

Format	Color
Hex	FC5B7D
RGB	252, 91, 125
RGB Percent	99%, 36%, 49%
CMY	0.0118, 0.6431, 0.5098
CMYK	0.00, 0.64, 0.50, 0.01
HSL	347°, 96%, 67%
HSV	347°, 64%, 99%
XYZ	47.5876, 29.6583, 22.6185
YIQ	143.0150, 85.0420, 44.7060

# Conversions

## Conversions Part 2

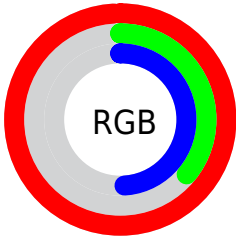
Format	Color
R <sub>Y</sub> B	252, 91, 125
Decimal	16538493
CIE Lab	61.36, 63.59, 14.93
CIE LCh	61, 65.317, 13.211
Yxy	29.6583, 0.4765, 0.2970
Android (android.graphics.Color)	4294728573 (0xFFFC5B7D)
YUV	143.0150, -8.8814, 95.5798
Hunter-Lab	54.4594, 60.6726, 13.4968

# Details

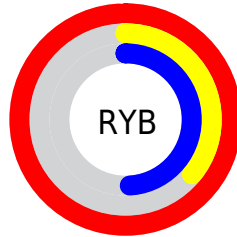
The Hex color **FC5B7D** is a light color, and the websafe version is hex **FF6699**. The color can be described as light muted rose. A complement of this color would be **5BFCDA**, and the grayscale version is **8F8F8F**.

A 20% lighter version of the original color is **FF94B1**, and **BE184C** is the 20% darker color. If you saturate the color by 10%, you get **FC4269**, and if you desaturate by 10%, it is **FC7491**.

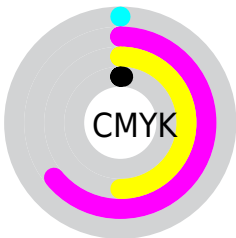
# Distribution



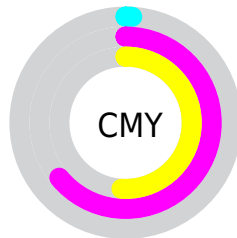
- Red (99%)
- Green (36%)
- Blue (49%)



- Red (99%)
- Yellow (36%)
- Blue (49%)



- Cyan (0%)
- Magenta (64%)
- Yellow (50%)
- Black (1%)



- Cyan (1%)
- Magenta (64%)
- Yellow (51%)

# Brightness & Saturation Gradients

These gradients show how the Hex color FC5B7D changes by changing the brightness by 10 percent. The first figure shows a shift by +10% for each color and the second figure -10%.

Similar to the brightness gradients but the following saturation gradients show a change of the Hex color FC5B7D by changing the saturation by 10% instead.



 FC5B7D

 FC5B7D

FFFFFF

 DD3D64

 FF94B1

 BE184C

 FFB1CD

 9F0036

 FFC EE9

 810021

 FFE CFF

 63000B

 470003

 280001

 000000

 FC5B7D

 FC5B7D

 FC4269

 FC7491

 FC2955

 FC8DA5

 FC0F41

 FCA7B9

 FC0035

 FCC0CD

 FCD9E0

 FCF2F4

 FCFFFF

# Harmonies

## Analogous

The Analogous color harmony consists of three colors that are next to each other on the color wheel.



EB61B7



FC5B7D



EF6D47

# Triad

The Triadic color harmony groups three colors that are evenly spaced from another and form a triangle on the color wheel.



FC5B7D



57A639



00A4FF

# Complementary

The Complementary color scheme is a pair of colors which are on the opposite of each other on the color wheel.



FC5B7D



5BFCDA

# Split Complementary

Split-complementary colors differ from the complementary color scheme. The scheme consists of three colors, the original color and two neighbors of the complement color.



00ADE2



FC5B7D



00AD71

# Square

The Square scheme is like the rectangle color scheme, but the four colors are evenly spaced on the color wheel.



FC5B7D



999907



00AFAD



4992FF

# Rectangle

The Rectangle color scheme consists of four colors that form a rectangle on the color wheel.



FC5B7D



D97D27



00AFAD



00A8FB



# Sweetspot

The Sweet Spot groups the original color and five complimentary colors.



FC5B7D



FFCFD9



D95BFC



806268



000000



808080



# Same Dimension

The Same Dimension uses a secret algorithm to generate beautiful new colors.



FC5B7D



FF3B64



FC895B



7D7073



BD0028



3D000D



# Inverse Universe

The Inverse Universe completely reimagines the original color for something new.



FC5B7D



FF3B64



5BCEFC



7D7073



BD0028



3D000D



# Previews

## White Background



This preview shows how the Hex color FC5B7D looks on a white background.

## Color Contrast Check

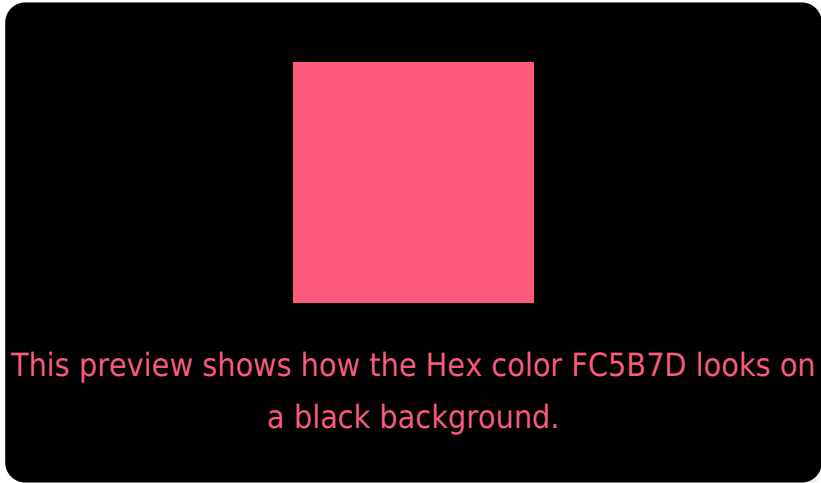
Large Text (above 18pt) WCAG AA ✓ Pass

Any Text WCAG AA × Fail

Large Text (above 18pt) WCAG AAA × Fail

Any Text WCAG AAA × Fail

# Black Background



## Color Contrast Check

Large Text (above 18pt) WCAG AA ✓ Pass

Any Text WCAG AA ✓ Pass

Large Text (above 18pt) WCAG AAA ✓ Pass

Any Text WCAG AAA × Fail

If you want to check with other color combinations, try the [Color Contrast Checker](#).



## Hex FC5B7D Background



This preview shows how black text looks on a background with the Hex color FC5B7D.



This preview shows how white text looks on a background with the Hex color FC5B7D.

# Color Blindness Simulation

Color vision deficiency is a very complex topic, and I could not describe the different causes any better than Wikipedia does, so if you want to learn more, you should check out their [article about color blindness](#).

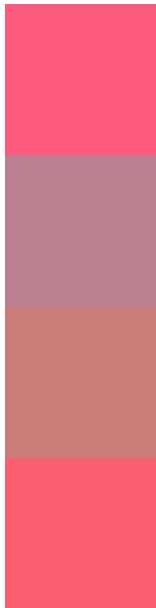
## Dichromacy





**Tritanopia**  
FB5F65

# Trichromacy



**Original Color**  
FC5B7D

**Protanomaly**  
BA7F90

**Deuteranomaly**  
CA7C78

**Tritanomaly**  
FB5E6E

# Monochromacy



**Original Color**  
FC5B7D

**Achromatopsia**  
8F8F8F

**Achromatomaly**  
B77C88

# CSS Examples

## Text

The CSS property to change the color of the text to Hex FC5B7D is called "color". The color property can be set on classes, ids or directly on the HTML element.

This example shows how text in the color #FC5B7D looks like.

```
.text, #text, p{  
    color:#FC5B7D  
}
```

If you want to add a text shadow in that color use the text-shadow property, you can generate a text shadow directly with our [CSS Text Shadow Generator](#).

Here you see how black text with a 4 pixel #FC5B7D colored shadow looks like.

```
.shadow{ text-shadow: 4px 4px 2px #FC5B7D
}
```

## Border

The CSS property to change the border of an element to Hex FC5B7D is called "border". The border property can be set on classes, ids or directly on the HTML element.

This example shows the color as border, it can be applied via the CSS property "border" or "border-color".

```
.border, #border, table{ border:4px solid
#FC5B7D }
```

If only the border color should be changed use the property `border-color`.

```
.border{ border-color:#FC5B7D }
```

If you want to add a box shadow in that color use:

Here you see how a box with a 4 pixel #FC5B7D colored shadow looks like.

```
.boxshadow{ -moz-box-shadow:4px 4px 4px  
4px #FC5B7D; -webkit-box-shadow:4px 4px  
4px 4px #FC5B7D; box-shadow:4px 4px 4px  
4px #FC5B7D }
```

# Background

The CSS property to change the background color of an element to Hex FC5B7D is called "background". The background property can be set on classes, ids or directly on the HTML element.

```
.background, #background, body{  
background:#FC5B7D }
```

If only the background color should be changed can be used:

```
.background{ background-color:#FC5B7D }
```

This example shows the color as background, it is applied via the CSS property "background".

To optimize and compress your CSS code, you can use our [online CSS compressor and optimizer](#) based on csstidy. If you want to create a linear or radial gradient as background or border, check our [CSS Gradient Generator](#).



Hey! You found this booklet interesting? Support Converting Colors with the new Membership Option!

The pro membership hides all ads, plus gives you double the colors in the color bucket, and more awesome pro features!

**[Learn more, Memberships starting at \\$2.50/m!](#)**

**Follow me  
on Twitter!**

@ConvertingColor