

Converting Colors

Hex(FC5C87)

Have a look what the booklet for
Hex(FC5C87) contains.

Hex(FC5C87)	3
<i>Conversions</i>	4
<i>Details</i>	6
<i>Harmonies</i>	11
<i>Previews</i>	23
<i>Color Blindness Simulation</i>	26
<i>CSS Examples</i>	29

Color

Hex(FC5C87)

Conversions

Conversions Part 1

Format	Color
Hex	FC5C87
RGB	252, 92, 135
RGB Percent	99%, 36%, 53%
CMY	0.0118, 0.6392, 0.4706
CMYK	0.00, 0.63, 0.46, 0.01
HSL	344°, 96%, 67%
HSV	344°, 63%, 99%
XYZ	48.3452, 30.0990, 26.1833
YIQ	144.7420, 81.5570, 47.2930

Conversions

Conversions Part 2

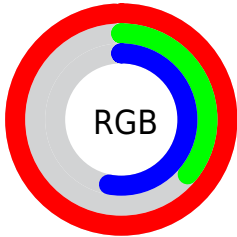
Format	Color
R _Y B	252, 92, 135
Decimal	16538759
CIE Lab	61.74, 64.04, 9.66
CIE LCh	62, 64.765, 8.581
Yxy	30.0990, 0.4621, 0.2877
Android (android.graphics.Color)	4294728839 (0xFFFC5C87)
YUV	144.7420, -4.8028, 94.0653
Hunter-Lab	54.8626, 61.2857, 10.1075

Details

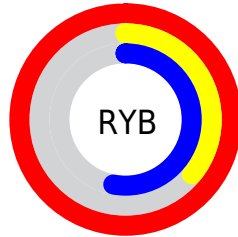
The Hex color **FC5C87** is a light color, and the websafe version is hex **FF6699**. The color can be described as light muted rose. A complement of this color would be **5CFCD1**, and the grayscale version is **919191**.

A 20% lighter version of the original color is **FF95BC**, and **BE1956** is the 20% darker color. If you saturate the color by 10%, you get **FC4375**, and if you desaturate by 10%, it is **FC7599**.

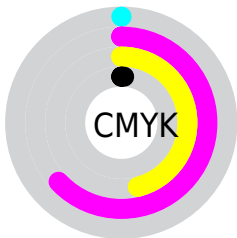
Distribution



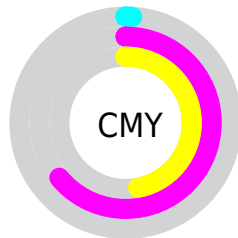
- Red (99%)
- Green (36%)
- Blue (53%)



- Red (99%)
- Yellow (36%)
- Blue (53%)



- Cyan (0%)
- Magenta (63%)
- Yellow (46%)
- Black (1%)



- Cyan (1%)
- Magenta (64%)
- Yellow (47%)

Brightness & Saturation Gradients

These gradients show how the Hex color FC5C87 changes by changing the brightness by 10 percent. The first figure shows a shift by +10% for each color and the second figure -10%.

Similar to the brightness gradients but the following saturation gradients show a change of the Hex color FC5C87 by changing the saturation by 10% instead.

 FC5C87

 FC5C87

FFFFFF

 DD3E6E

 FF95BC

 BE1956

 FFB2D8

 A0003F

 FFCFF4

 820029

 FFEDFF

 640015

 480003

 290001

 000000

 FC5C87

 FC5C87

 FC4375

 FC7599

 FC2A62

 FC8EAC

 FC1050

 FCA8BE

 FC0044

 FCC1D1

 FCDAE3

 FCF3F6

 FCFFFF

Harmonies

Analogous

The Analogous color harmony consists of three colors that are next to each other on the color wheel.



E665C0



FC5C87



F36B50

Triad

The Triadic color harmony groups three colors that are evenly spaced from another and form a triangle on the color wheel.



FC5C87



64A633



00A6FF

Complementary

The Complementary color scheme is a pair of colors which are on the opposite of each other on the color wheel.



FC5C87



5CFCD1

Split Complementary

Split-complementary colors differ from the complementary color scheme. The scheme consists of three colors, the original color and two neighbors of the complement color.



00AEDB



FC5C87



00AD69

Square

The Square scheme is like the rectangle color scheme, but the four colors are evenly spaced on the color wheel.



FC5C87



A29808



00B0A5



2696FF

Rectangle

The Rectangle color scheme consists of four colors that form a rectangle on the color wheel.



FC5C87



DF7B31



00B0A5



00AAF7

Sweetspot

The Sweet Spot groups the original color and five complimentary colors.



FC5C87



FFCFDC



CF5CFC



80626A



000000



808080

Same Dimension

The Same Dimension uses a secret algorithm to generate beautiful new colors.



FC5C87



FF3D71



FC7F5C



7D7074



BD0033



3D0010

Inverse Universe

The Inverse Universe completely reimagines the original color for something new.



FC5C87



FF3D71



5CD9FC



7D7074



BD0033



3D0010

Previews

White Background



This preview shows how the Hex color FC5C87 looks on a white background.

Color Contrast Check

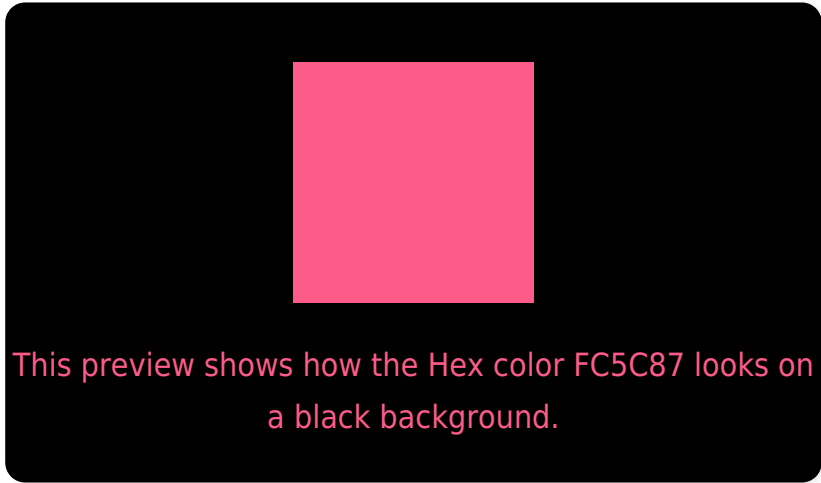
Large Text (above 18pt) WCAG AA × Fail

Any Text WCAG AA × Fail

Large Text (above 18pt) WCAG AAA × Fail

Any Text WCAG AAA × Fail

Black Background



Color Contrast Check

Large Text (above 18pt) WCAG AA ✓ Pass

Any Text WCAG AA ✓ Pass

Large Text (above 18pt) WCAG AAA ✓ Pass

Any Text WCAG AAA ✓ Pass

If you want to check with other color combinations, try the [Color Contrast Checker](#).

Hex FC5C87 Background



This preview shows how black text looks on a background with the Hex color FC5C87.




This preview shows how white text looks on a background with the Hex color FC5C87.

Color Blindness Simulation

Color vision deficiency is a very complex topic, and I could not describe the different causes any better than Wikipedia does, so if you want to learn more, you should check out their [article about color blindness](#).

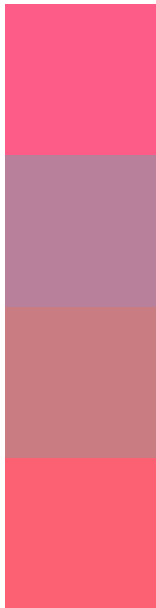
Dichromacy





Tritanopia
FA6268

Trichromacy



Original Color
FC5C87

Protanomaly
B9809B

Deuteranomaly
C97D82

Tritanomaly
FB6073

Monochromacy



Original Color
FC5C87

Achromatopsia
919191

Achromatomaly
B87E8D

CSS Examples

Text

The CSS property to change the color of the text to Hex FC5C87 is called "color". The color property can be set on classes, ids or directly on the HTML element.

This example shows how text in the color #FC5C87 looks like.

```
.text, #text, p{  
    color:#FC5C87  
}
```

If you want to add a text shadow in that color use the text-shadow property, you can generate a text shadow directly with our [CSS Text Shadow Generator](#).

Here you see how black text with a 4 pixel #FC5C87 colored shadow looks like.

```
.shadow{ text-shadow: 4px 4px 2px #FC5C87
}
```

Border

The CSS property to change the border of an element to Hex FC5C87 is called "border". The border property can be set on classes, ids or directly on the HTML element.

This example shows the color as border, it can be applied via the CSS property "border" or "border-color".

```
.border, #border, table{ border:4px solid
#FC5C87 }
```

If only the border color should be changed use the property `border-color`.

```
.border{ border-color:#FC5C87 }
```

If you want to add a box shadow in that color use:

Here you see how a box with a 4 pixel #FC5C87 colored shadow looks like.

```
.boxshadow{ -moz-box-shadow:4px 4px 4px  
4px #FC5C87; -webkit-box-shadow:4px 4px  
4px 4px #FC5C87; box-shadow:4px 4px 4px  
4px #FC5C87 }
```

Background

The CSS property to change the background color of an element to Hex FC5C87 is called "background". The background property can be set on classes, ids or directly on the HTML element.

```
.background, #background, body{  
background:#FC5C87 }
```

If only the background color should be changed can be used:

```
.background{ background-color:#FC5C87 }
```

This example shows the color as background, it is applied via the CSS property "background".

To optimize and compress your CSS code, you can use our [online CSS compressor and optimizer](#) based on csstidy. If you want to create a linear or radial gradient as background or border, check our [CSS Gradient Generator](#).

Hey! You found this booklet interesting? Support Converting Colors with the new Membership Option!

The pro membership hides all ads, plus gives you double the colors in the color bucket, and more awesome pro features!

[Learn more, Memberships starting at \\$2.50/m!](#)

**Follow me
on Twitter!**

@ConvertingColor