

Converting Colors

Hex(FC6278)

Have a look what the booklet for
Hex(FC6278) contains.

Hex(FC6278)	3
<i>Conversions</i>	4
<i>Details</i>	6
<i>Harmonies</i>	11
<i>Previews</i>	23
<i>Color Blindness Simulation</i>	26
<i>CSS Examples</i>	29

Color

Hex(FC6278)

Conversions

Conversions Part 1

Format	Color
Hex	FC6278
RGB	252, 98, 120
RGB Percent	99%, 38%, 47%
CMY	0.0118, 0.6157, 0.5294
CMYK	0.00, 0.61, 0.52, 0.01
HSL	351°, 96%, 69%
HSV	351°, 61%, 99%
XYZ	47.9027, 30.7869, 21.1870
YIQ	146.5540, 84.7220, 39.4900

Conversions

Conversions Part 2

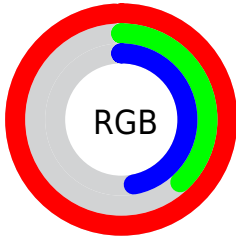
Format	Color
R _Y B	252, 98, 120
Decimal	16540280
CIE Lab	62.33, 60.29, 19.15
CIE LCh	62, 63.254, 17.624
Yxy	30.7869, 0.4796, 0.3082
Android (android.graphics.Color)	4294730360 (0xFFFC6278)
YUV	146.5540, -13.0911, 92.4761
Hunter-Lab	55.4859, 57.0043, 16.2006

Details

The Hex color **FC6278** is a light color, and the websafe version is hex **FF6666**. A complement of this color would be **62FCE6**, and the grayscale version is **939393**.

A 20% lighter version of the original color is **FF9BAC**, and **BE2548** is the 20% darker color. If you saturate the color by 10%, you get **FC4962**, and if you desaturate by 10%, it is **FC7B8E**.

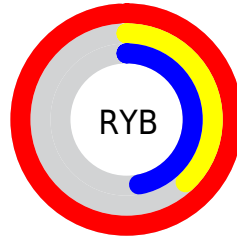
Distribution



Red (99%)

Green (38%)

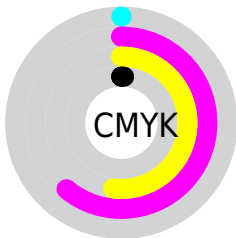
Blue (47%)



Red (99%)

Yellow (38%)

Blue (47%)

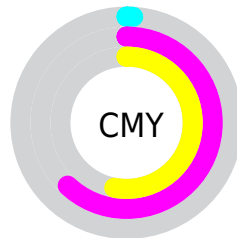


Cyan (0%)

Magenta (61%)

Yellow (52%)

Black (1%)



Cyan (1%)

Magenta (62%)

Yellow (53%)

Brightness & Saturation Gradients

These gradients show how the Hex color FC6278 changes by changing the brightness by 10 percent. The first figure shows a shift by +10% for each color and the second figure -10%.

Similar to the brightness gradients but the following saturation gradients show a change of the Hex color FC6278 by changing the saturation by 10% instead.

 FC6278

 FC6278

FFFFFF

 DD455F

 FF9BAC

 BE2548

 FFB7C7

 9F0032

 FFD4E3

 81001D

 FFF2FF

 640004

 470002

 280001

 000000

 FC6278

 FC6278

 FC4962

 FC7B8E

 FC304D

 FC94A3

 FC1637

 FCAEB9

 FC0024

 FCC7CE

 FCE0E4

 FCF9FA

 FCFFFF

Harmonies

Analogous

The Analogous color harmony consists of three colors that are next to each other on the color wheel.



F064B0



FC6278



EB7545

Triad

The Triadic color harmony groups three colors that are evenly spaced from another and form a triangle on the color wheel.



FC6278



50AA46



00A4FF

Complementary

The Complementary color scheme is a pair of colors which are on the opposite of each other on the color wheel.



FC6278



62FCE6

Split Complementary

Split-complementary colors differ from the complementary color scheme. The scheme consists of three colors, the original color and two neighbors of the complement color.



00AEE9



FC6278



00B07D

Square

The Square scheme is like the rectangle color scheme, but the four colors are evenly spaced on the color wheel.



FC6278



949E1B



00B1B7



6991FF

Rectangle

The Rectangle color scheme consists of four colors that form a rectangle on the color wheel.



FC6278



D58429



00B1B7



00A8FE

Sweetspot

The Sweet Spot groups the original color and five complimentary colors.



FC6278



FFD1D8



E562FC



806367



000000



808080

Same Dimension

The Same Dimension uses a secret algorithm to generate beautiful new colors.



FC6278



FF455F



FC9862



7D7072



BD001B



3D0009

Inverse Universe

The Inverse Universe completely reimagines the original color for something new.



FC6278



FF455F



62C6FC



7D7072



BD001B



3D0009

Previews

White Background



This preview shows how the Hex color FC6278 looks on a white background.

Color Contrast Check

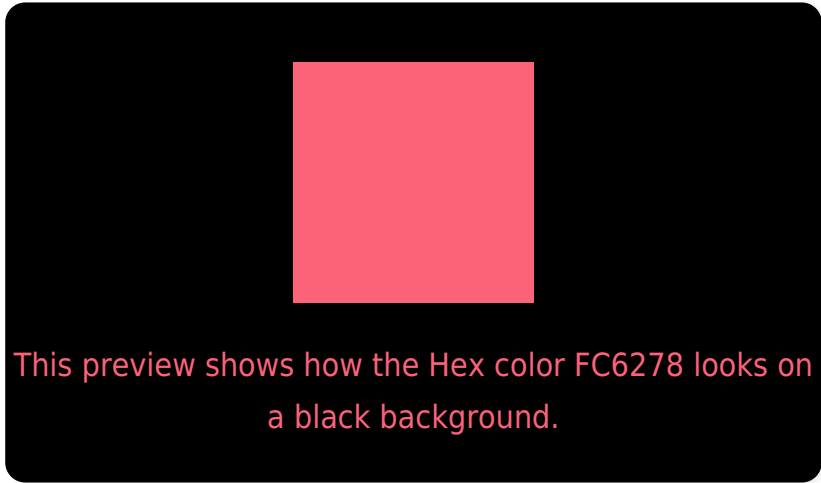
Large Text (above 18pt) WCAG AA × Fail

Any Text WCAG AA × Fail

Large Text (above 18pt) WCAG AAA × Fail

Any Text WCAG AAA × Fail

Black Background



Color Contrast Check

Large Text (above 18pt) WCAG AA ✓ Pass

Any Text WCAG AA ✓ Pass

Large Text (above 18pt) WCAG AAA ✓ Pass

Any Text WCAG AAA ✓ Pass

If you want to check with other color combinations, try the [Color Contrast Checker](#).

Hex FC6278 Background



This preview shows how black text looks on a background with the Hex color FC6278.



This preview shows how white text looks on a background with the Hex color FC6278.

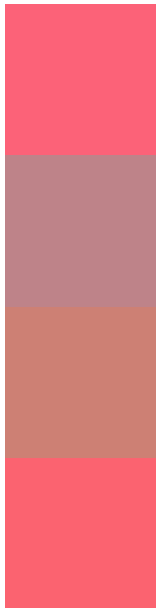
Color Blindness Simulation

Color vision deficiency is a very complex topic, and I could not describe the different causes any better than Wikipedia does, so if you want to learn more, you should check out their [article about color blindness](#).

Dichromacy



Trichromacy



Original Color
FC6278

Protanomaly
BE8389

Deuteranomaly
CD8074

Tritanomaly
FB6370

Monochromacy



Original Color
FC6278

Achromatopsia
939393

Achromatomaly
B98189

CSS Examples

Text

The CSS property to change the color of the text to Hex FC6278 is called "color". The color property can be set on classes, ids or directly on the HTML element.

This example shows how text in the color #FC6278 looks like.

```
.text, #text, p{  
    color:#FC6278  
}
```

If you want to add a text shadow in that color use the text-shadow property, you can generate a text shadow directly with our [CSS Text Shadow Generator](#).

Here you see how black text with a 4 pixel #FC6278 colored shadow looks like.

```
.shadow{ text-shadow: 4px 4px 2px #FC6278
}
```

Border

The CSS property to change the border of an element to Hex FC6278 is called "border". The border property can be set on classes, ids or directly on the HTML element.

This example shows the color as border, it can be applied via the CSS property "border" or "border-color".

```
.border, #border, table{ border:4px solid
#FC6278 }
```

If only the border color should be changed use the property `border-color`.

```
.border{ border-color:#FC6278 }
```

If you want to add a box shadow in that color use:

Here you see how a box with a 4 pixel #FC6278 colored shadow looks like.

```
.boxshadow{ -moz-box-shadow:4px 4px 4px  
4px #FC6278; -webkit-box-shadow:4px 4px  
4px 4px #FC6278; box-shadow:4px 4px 4px  
4px #FC6278 }
```

Background

The CSS property to change the background color of an element to Hex FC6278 is called "background". The background property can be set on classes, ids or directly on the HTML element.

```
.background, #background, body{  
background:#FC6278 }
```

If only the background color should be changed can be used:

```
.background{ background-color:#FC6278 }
```

This example shows the color as background, it is applied via the CSS property "background".

To optimize and compress your CSS code, you can use our [online CSS compressor and optimizer](#) based on csstidy. If you want to create a linear or radial gradient as background or border, check our [CSS Gradient Generator](#).

Hey! You found this booklet interesting? Support Converting Colors with the new Membership Option!

The pro membership hides all ads, plus gives you double the colors in the color bucket, and more awesome pro features!

[Learn more, Memberships starting at \\$2.50/m!](#)

**Follow me
on Twitter!**

@ConvertingColor