

Converting Colors

Hex(FC6A81)

Have a look what the booklet for
Hex(FC6A81) contains.

Hex(FC6A81)	3
<i>Conversions</i>	4
<i>Details</i>	6
<i>Harmonies</i>	11
<i>Previews</i>	23
<i>Color Blindness Simulation</i>	26
<i>CSS Examples</i>	29

Color

Hex(FC6A81)

Conversions

Conversions Part 1

Format	Color
Hex	FC6A81
RGB	252, 106, 129
RGB Percent	99%, 42%, 51%
CMY	0.0118, 0.5843, 0.4941
CMYK	0.00, 0.58, 0.49, 0.01
HSL	351°, 96%, 70%
HSV	351°, 58%, 99%
XYZ	49.2614, 32.5885, 24.4627
YIQ	152.2760, 79.6330, 38.1050

Conversions

Conversions Part 2

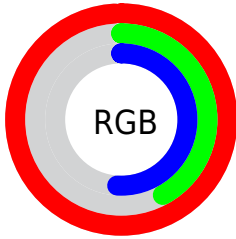
Format	Color
R _Y B	252, 106, 129
Decimal	16542337
CIE Lab	63.83, 57.55, 16.05
CIE LCh	64, 59.746, 15.580
Yxy	32.5885, 0.4634, 0.3065
Android (android.graphics.Color)	4294732417 (0xFFFC6A81)
YUV	152.2760, -11.4751, 87.4579
Hunter-Lab	57.0863, 54.1315, 14.5534

Details

The Hex color **FC6A81** is a light color, and the websafe version is hex **FF6699**. A complement of this color would be **6AFCE5**, and the grayscale version is **989898**.

A 20% lighter version of the original color is **FFA2B6**, and **BE3050** is the 20% darker color. If you saturate the color by 10%, you get **FC516C**, and if you desaturate by 10%, it is **FC8396**.

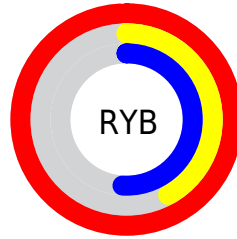
Distribution



Red (99%)

Green (42%)

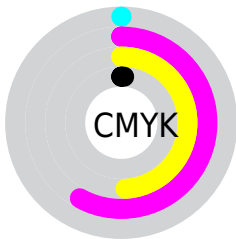
Blue (51%)



Red (99%)

Yellow (42%)

Blue (51%)

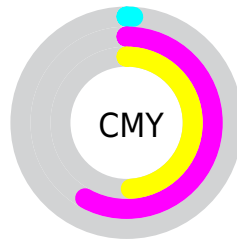


Cyan (0%)

Magenta (58%)

Yellow (49%)

Black (1%)



Cyan (1%)

Magenta (58%)

Yellow (49%)

Brightness & Saturation Gradients

These gradients show how the Hex color FC6A81 changes by changing the brightness by 10 percent. The first figure shows a shift by +10% for each color and the second figure -10%.

Similar to the brightness gradients but the following saturation gradients show a change of the Hex color FC6A81 by changing the saturation by 10% instead.

 FC6A81

 FC6A81

FFFFFF

 DD4E68

 FFA2B6

 BE3050

 FFBFD1

 A00639

 FFD CED

 820024

 FFF9FF

 650010

 480001

 2B0001

 000000

 FC6A81

 FC6A81

 FC516C

 FC8396

 FC3857

 FC9CAB

 FC1E41

 FCB6C1

 FC052C

 FCCFD6

 FC0028

 FCE8EB

 FCFFFF

Harmonies

Analogous

The Analogous color harmony consists of three colors that are next to each other on the color wheel.



EE6DB7



FC6A81



EE7950

Triad

The Triadic color harmony groups three colors that are evenly spaced from another and form a triangle on the color wheel.



FC6A81



5FAC4C



00A8FF

Complementary

The Complementary color scheme is a pair of colors which are on the opposite of each other on the color wheel.



FC6A81



6AFCE5

Split Complementary

Split-complementary colors differ from the complementary color scheme. The scheme consists of three colors, the original color and two neighbors of the complement color.



00B1E6



FC6A81



00B37E

Square

The Square scheme is like the rectangle color scheme, but the four colors are evenly spaced on the color wheel.



FC6A81



9CA129



00B4B6



6A97FF

Rectangle

The Rectangle color scheme consists of four colors that form a rectangle on the color wheel.



FC6A81



D98837



00B4B6



00ACFB

Sweetspot

The Sweet Spot groups the original color and five complimentary colors.



FC6A81



FFD4DA



E46AFC



80666A



000000



808080

Same Dimension

The Same Dimension uses a secret algorithm to generate beautiful new colors.



FC6A81



FF4D69



FC9B6A



7D7072



BD001E



3D000A

Inverse Universe

The Inverse Universe completely reimagines the original color for something new.



FC6A81



FF4D69



6ACBFC



7D7072



BD001E



3D000A

Previews

White Background



This preview shows how the Hex color FC6A81 looks on a white background.

Color Contrast Check

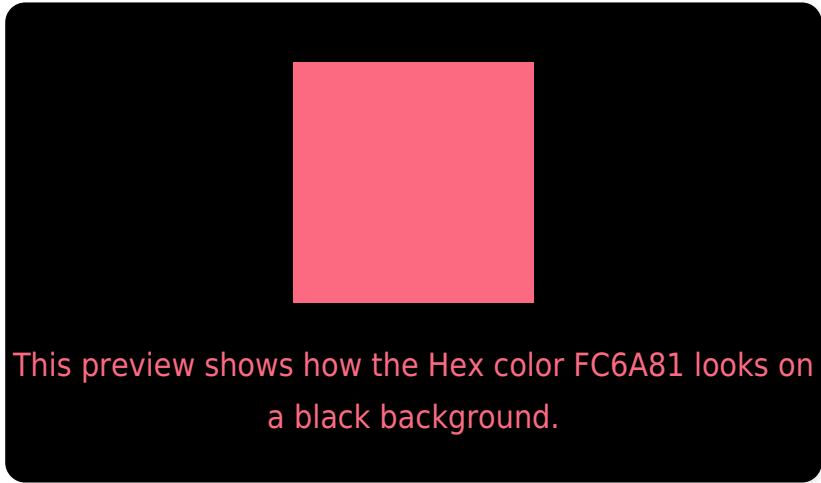
Large Text (above 18pt) WCAG AA × Fail

Any Text WCAG AA × Fail

Large Text (above 18pt) WCAG AAA × Fail

Any Text WCAG AAA × Fail

Black Background



Color Contrast Check

Large Text (above 18pt) WCAG AA ✓ Pass

Any Text WCAG AA ✓ Pass

Large Text (above 18pt) WCAG AAA ✓ Pass

Any Text WCAG AAA ✓ Pass

If you want to check with other color combinations, try the [Color Contrast Checker](#).

Hex FC6A81 Background



This preview shows how black text looks on a background with the Hex color FC6A81.

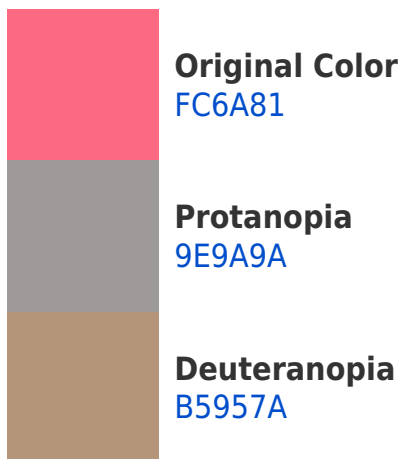


This preview shows how white text looks on a background with the Hex color FC6A81.

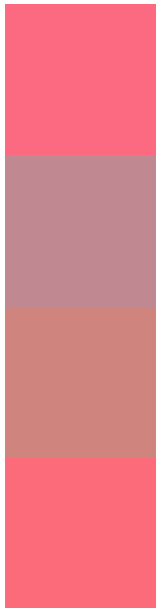
Color Blindness Simulation

Color vision deficiency is a very complex topic, and I could not describe the different causes any better than Wikipedia does, so if you want to learn more, you should check out their [article about color blindness](#).

Dichromacy



Trichromacy



Original Color
FC6A81

Protanomaly
C08991

Deuteranomaly
CF857D

Tritanomaly
FB6B79

Monochromacy



Original Color
FC6A81

Achromatopsia
989898

Achromatomaly
BC8790

CSS Examples

Text

The CSS property to change the color of the text to Hex FC6A81 is called "color". The color property can be set on classes, ids or directly on the HTML element.

This example shows how text in the color #FC6A81 looks like.

```
.text, #text, p{  
    color:#FC6A81  
}
```

If you want to add a text shadow in that color use the text-shadow property, you can generate a text shadow directly with our [CSS Text Shadow Generator](#).

Here you see how black text with a 4 pixel #FC6A81 colored shadow looks like.

```
.shadow{ text-shadow: 4px 4px 2px #FC6A81
}
```

Border

The CSS property to change the border of an element to Hex FC6A81 is called "border". The border property can be set on classes, ids or directly on the HTML element.

This example shows the color as border, it can be applied via the CSS property "border" or "border-color".

```
.border, #border, table{ border:4px solid
#FC6A81 }
```

If only the border color should be changed use the property `border-color`.

```
.border{ border-color:#FC6A81 }
```

If you want to add a box shadow in that color use:

Here you see how a box with a 4 pixel #FC6A81 colored shadow looks like.

```
.boxshadow{ -moz-box-shadow:4px 4px 4px  
4px #FC6A81; -webkit-box-shadow:4px 4px  
4px 4px #FC6A81; box-shadow:4px 4px 4px  
4px #FC6A81 }
```

Background

The CSS property to change the background color of an element to Hex FC6A81 is called "background". The background property can be set on classes, ids or directly on the HTML element.

```
.background, #background, body{  
background:#FC6A81 }
```

If only the background color should be changed can be used:

```
.background{ background-color:#FC6A81 }
```

This example shows the color as background, it is applied via the CSS property "background".

To optimize and compress your CSS code, you can use our [online CSS compressor and optimizer](#) based on csstidy. If you want to create a linear or radial gradient as background or border, check our [CSS Gradient Generator](#).

Hey! You found this booklet interesting? Support Converting Colors with the new Membership Option!

The pro membership hides all ads, plus gives you double the colors in the color bucket, and more awesome pro features!

[Learn more, Memberships starting at \\$2.50/m!](#)

**Follow me
on Twitter!**

@ConvertingColor