

Converting Colors

Hex(FC7294)

Have a look what the booklet for
Hex(FC7294) contains.

Hex(FC7294)	3
<i>Conversions</i>	4
<i>Details</i>	6
<i>Harmonies</i>	11
<i>Previews</i>	23
<i>Color Blindness Simulation</i>	26
<i>CSS Examples</i>	29

Color

Hex(FC7294)

Conversions

Conversions Part 1

Format	Color
Hex	FC7294
RGB	252, 114, 148
RGB Percent	99%, 45%, 58%
CMY	0.0118, 0.5529, 0.4196
CMYK	0.00, 0.55, 0.41, 0.01
HSL	345°, 96%, 72%
HSV	345°, 55%, 99%
XYZ	51.5075, 34.8682, 32.0325
YIQ	159.1380, 71.3340, 39.8300

Conversions

Conversions Part 2

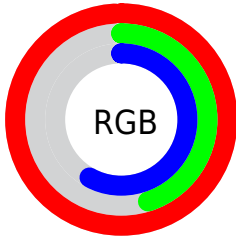
Format	Color
RYB	252, 114, 148
Decimal	16544404
CIELab	65.65, 55.72, 7.75
CIELCh	66, 56.258, 7.920
Yxy	34.8682, 0.4350, 0.2945
Android (android.graphics.Color)	4294734484 (0xFFFC7294)
YUV	159.1380, -5.4910, 81.4400
Hunter-Lab	59.0493, 52.3656, 9.1715

Details

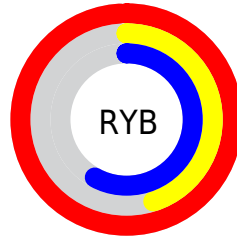
The Hex color **FC7294** is a light color, and the websafe version is hex **FF6699**. A complement of this color would be **72FCDA**, and the grayscale version is **9F9F9F**.

A 20% lighter version of the original color is **FFAACA**, and **BF3A62** is the 20% darker color. If you saturate the color by 10%, you get **FC5981**, and if you desaturate by 10%, it is **FC8BA7**.

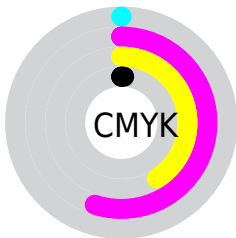
Distribution



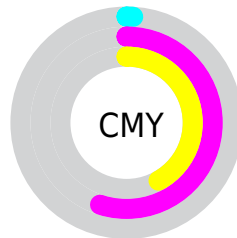
- Red (99%)
- Green (45%)
- Blue (58%)



- Red (99%)
- Yellow (45%)
- Blue (58%)



- Cyan (0%)
- Magenta (55%)
- Yellow (41%)
- Black (1%)



- Cyan (1%)
- Magenta (55%)
- Yellow (42%)

Brightness & Saturation Gradients

These gradients show how the Hex color FC7294 changes by changing the brightness by 10 percent. The first figure shows a shift by +10% for each color and the second figure -10%.

Similar to the brightness gradients but the following saturation gradients show a change of the Hex color FC7294 by changing the saturation by 10% instead.

 FC7294

 FC7294

FFFFFF

 DD567A

 FFAACA

 BF3A62

 FFC6E6

 A2194A

 FFE3FF

 840034

 67001F

 4B0005

 300002

 000000

 FC7294

 FC7294

FC5981

FC8BA7

FC406E

FCA4BA

FC265B

FCBECD

FC0D48

FCD7E0

FC003E

FCF0F3

FCFFFF

Harmonies

Analogous

The Analogous color harmony consists of three colors that are next to each other on the color wheel.



E779C6



FC7294



F57C64

Triad

The Triadic color harmony groups three colors that are evenly spaced from another and form a triangle on the color wheel.



FC7294



79AE4B



00AFFC

Complementary

The Complementary color scheme is a pair of colors which are on the opposite of each other on the color wheel.



FC7294



72FCDA

Split Complementary

Split-complementary colors differ from the complementary color scheme. The scheme consists of three colors, the original color and two neighbors of the complement color.



00B6DC



FC7294



1CB678

Square

The Square scheme is like the rectangle color scheme, but the four colors are evenly spaced on the color wheel.



FC7294



AFA134



00B8AC



57A1FF

Rectangle

The Rectangle color scheme consists of four colors that form a rectangle on the color wheel.



FC7294



E5894A



00B8AC



00B2F4

Sweetspot

The Sweet Spot groups the original color and five complimentary colors.



FC7294



FFD6E0



DA72FC



80676D



000000



808080

Same Dimension

The Same Dimension uses a secret algorithm to generate beautiful new colors.



FC7294



FF5780



FC9472



7D7074



BD002E



3D000F

Inverse Universe

The Inverse Universe completely reimagines the original color for something new.



FC7294



FF5780



72DAFC



7D7074



BD002E



3D000F

Previews

White Background



This preview shows how the Hex color FC7294 looks on a white background.

Color Contrast Check

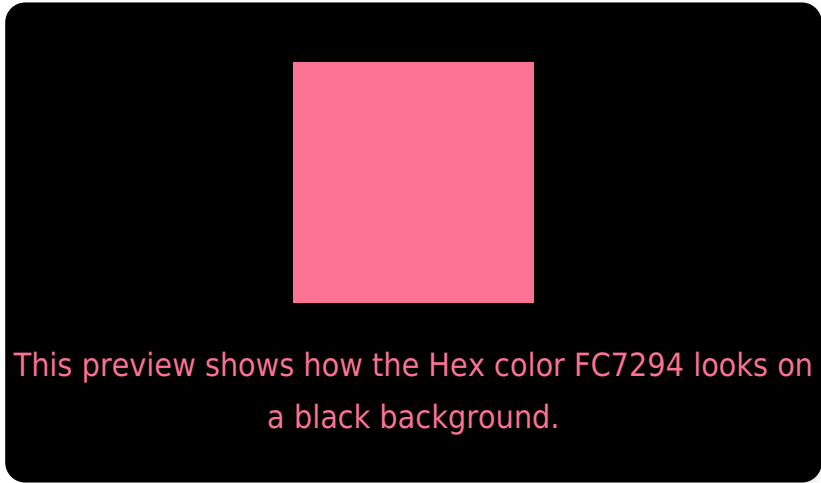
Large Text (above 18pt) WCAG AA × Fail

Any Text WCAG AA × Fail

Large Text (above 18pt) WCAG AAA × Fail

Any Text WCAG AAA × Fail

Black Background



Color Contrast Check

Large Text (above 18pt) WCAG AA ✓ Pass

Any Text WCAG AA ✓ Pass

Large Text (above 18pt) WCAG AAA ✓ Pass

Any Text WCAG AAA ✓ Pass

If you want to check with other color combinations, try the [Color Contrast Checker](#).

Hex FC7294 Background



This preview shows how black text looks on a background with the Hex color FC7294.

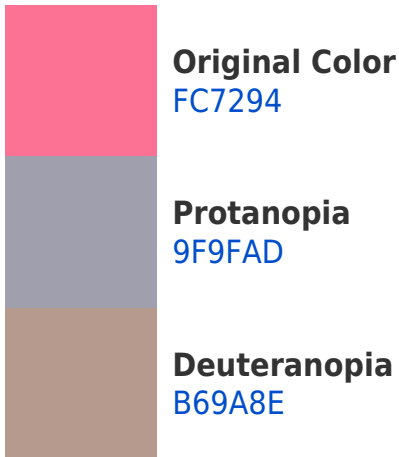


This preview shows how white text looks on a background with the Hex color FC7294.

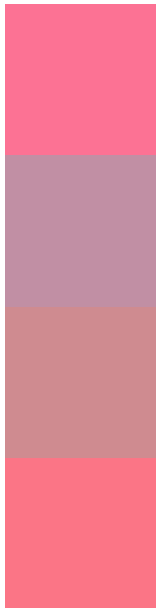
Color Blindness Simulation

Color vision deficiency is a very complex topic, and I could not describe the different causes any better than Wikipedia does, so if you want to learn more, you should check out their [article about color blindness](#).

Dichromacy



Trichromacy



Original Color
FC7294

Protanomaly
C18FA4

Deuteranomaly
CF8B90

Tritanomaly
FB7586

Monochromacy



Original Color
FC7294

Achromatopsia
9F9F9F

Achromatomaly
C18F9B

CSS Examples

Text

The CSS property to change the color of the text to Hex FC7294 is called "color". The color property can be set on classes, ids or directly on the HTML element.

This example shows how text in the color #FC7294 looks like.

```
.text, #text, p{  
    color:#FC7294  
}
```

If you want to add a text shadow in that color use the text-shadow property, you can generate a text shadow directly with our [CSS Text Shadow Generator](#).

Here you see how black text with a 4 pixel #FC7294 colored shadow looks like.

```
.shadow{ text-shadow: 4px 4px 2px #FC7294
}
```

Border

The CSS property to change the border of an element to Hex FC7294 is called "border". The border property can be set on classes, ids or directly on the HTML element.

This example shows the color as border, it can be applied via the CSS property "border" or "border-color".

```
.border, #border, table{ border:4px solid
#FC7294 }
```

If only the border color should be changed use the property `border-color`.

```
.border{ border-color:#FC7294 }
```

If you want to add a box shadow in that color use:

Here you see how a box with a 4 pixel #FC7294 colored shadow looks like.

```
.boxshadow{ -moz-box-shadow:4px 4px 4px  
4px #FC7294; -webkit-box-shadow:4px 4px  
4px 4px #FC7294; box-shadow:4px 4px 4px  
4px #FC7294 }
```

Background

The CSS property to change the background color of an element to Hex FC7294 is called "background". The background property can be set on classes, ids or directly on the HTML element.

```
.background, #background, body{  
background:#FC7294 }
```

If only the background color should be changed can be used:

```
.background{ background-color:#FC7294 }
```

This example shows the color as background, it is applied via the CSS property "background".

To optimize and compress your CSS code, you can use our [online CSS compressor and optimizer](#) based on csstidy. If you want to create a linear or radial gradient as background or border, check our [CSS Gradient Generator](#).

Hey! You found this booklet interesting? Support Converting Colors with the new Membership Option!

The pro membership hides all ads, plus gives you double the colors in the color bucket, and more awesome pro features!

[Learn more, Memberships starting at \\$2.50/m!](#)

**Follow me
on Twitter!**

@ConvertingColor