

# Converting Colors

Hex(FC7991)

Have a look what the booklet for  
Hex(FC7991) contains.

<b>Hex(FC7991)</b> .....	3
<b><i>Conversions</i></b> .....	4
<b><i>Details</i></b> .....	6
<b><i>Harmonies</i></b> .....	11
<b><i>Previews</i></b> .....	23
<b><i>Color Blindness Simulation</i></b> .....	26
<b><i>CSS Examples</i></b> .....	29

# **Color**

**Hex(FC7991)**

# Conversions

## Conversions Part 1

<b>Format</b>	<b>Color</b>
Hex	FC7991
RGB	252, 121, 145
RGB Percent	99%, 47%, 57%
CMY	0.0118, 0.5255, 0.4314
CMYK	0.00, 0.52, 0.42, 0.01
HSL	349°, 96%, 73%
HSV	349°, 52%, 99%
XYZ	52.0931, 36.4145, 31.0712
YIQ	162.9050, 70.3720, 35.2360

# Conversions

## Conversions Part 2

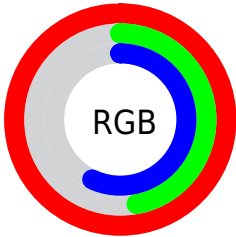
Format	Color
<a href="#">RYB</a>	<a href="#">252, 121, 145</a>
Decimal	<a href="#">16546193</a>
CIELab	<a href="#">66.84, 52.13, 11.15</a>
CIElCh	<a href="#">67, 53.312, 12.069</a>
Yxy	<a href="#">36.4145, 0.4356, 0.3045</a>
Android (android.graphics.Color)	<a href="#">4294736273</a> (0xFFFC7991)
YUV	<a href="#">162.9050, -8.8272, 78.1363</a>
Hunter-Lab	<a href="#">60.3444, 48.4895, 11.7129</a>

# Details

The Hex color **FC7991** is a light color, and the websafe version is hex **FF6699**. A complement of this color would be **79FCE4**, and the grayscale version is **A3A3A3**.

A 20% lighter version of the original color is **FFB1C7**, and **BF425F** is the 20% darker color. If you saturate the color by 10%, you get **FC607C**, and if you desaturate by 10%, it is **FC92A6**.

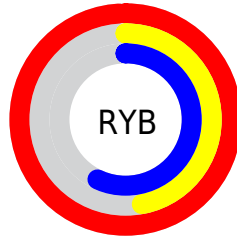
# Distribution



Red (99%)

Green (47%)

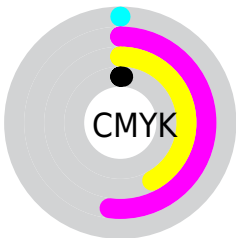
Blue (57%)



Red (99%)

Yellow (47%)

Blue (57%)

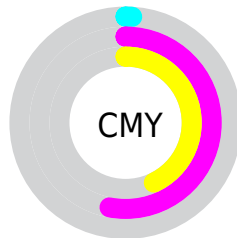


Cyan (0%)

Magenta (52%)

Yellow (42%)

Black (1%)



Cyan (1%)

Magenta (53%)

Yellow (43%)

# Brightness & Saturation Gradients

These gradients show how the Hex color FC7991 changes by changing the brightness by 10 percent. The first figure shows a shift by +10% for each color and the second figure -10%.

Similar to the brightness gradients but the following saturation gradients show a change of the Hex color FC7991 by changing the saturation by 10% instead.



 FC7991

 FC7991

FFFFFF

 DD5E77

 FFB1C7

 BF425F

 FFCDE3


 A22547

 FFEAFF

 850031

 68001D

 4C0001

 310002

 000000

 FC7991

 FC7991

 FC607C

 FC92A6

 FC4768

 FCABBA

 FC2D53

 FCC5CF

 FC143F

 FCDEE3

 FC002E

 FCF7F8

 FCFFFF

# Harmonies

## Analogous

The Analogous color harmony consists of three colors that are next to each other on the color wheel.



EC7DC1



FC7991



F38465

# Triad

The Triadic color harmony groups three colors that are evenly spaced from another and form a triangle on the color wheel.



FC7991



77B258



00B0FD

# Complementary

The Complementary color scheme is a pair of colors which are on the opposite of each other on the color wheel.



FC7991



79FCE4

# Split Complementary

Split-complementary colors differ from the complementary color scheme. The scheme consists of three colors, the original color and two neighbors of the complement color.



00B8E2



FC7991



1CB983

# Square

The Square scheme is like the rectangle color scheme, but the four colors are evenly spaced on the color wheel.



FC7991



ABA640



00BBB5



72A1FF

# Rectangle

The Rectangle color scheme consists of four colors that form a rectangle on the color wheel.



FC7991



E1904E



00BBB5



00B3F7



# Sweetspot

The Sweet Spot groups the original color and five complimentary colors.



FC7991



FFD6DE



E479FC



80676C



000000



808080



# Same Dimension

The Same Dimension uses a secret algorithm to generate beautiful new colors.



FC7991



FF617E



FCA279



7D7073



BD0023



3D000B



# Inverse Universe

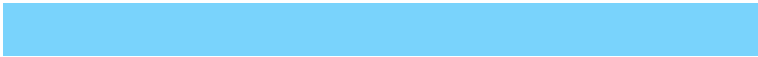
The Inverse Universe completely reimagines the original color for something new.



FC7991



FF617E



79D3FC



7D7073



BD0023

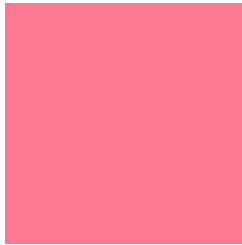


3D000B



# Previews

## White Background



This preview shows how the Hex color FC7991 looks on a white background.

## Color Contrast Check

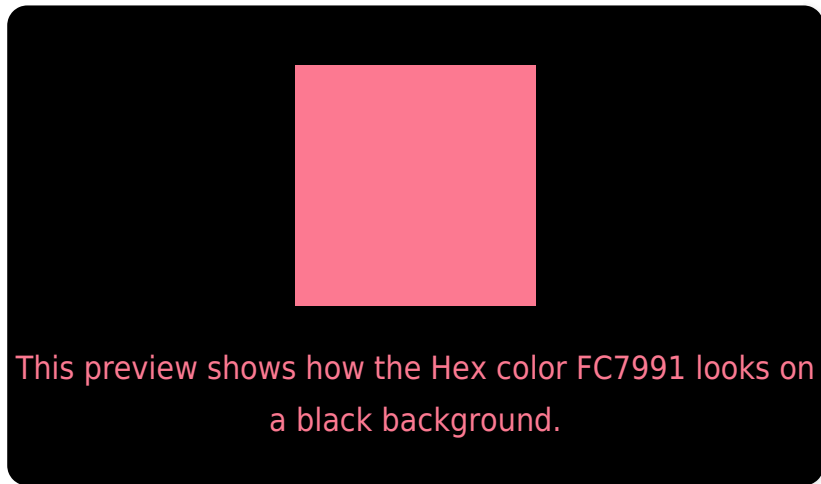
Large Text (above 18pt) WCAG AA × Fail

Any Text WCAG AA × Fail

Large Text (above 18pt) WCAG AAA × Fail

Any Text WCAG AAA × Fail

# Black Background



## Color Contrast Check

Large Text (above 18pt) WCAG AA ✓ Pass

Any Text WCAG AA ✓ Pass

Large Text (above 18pt) WCAG AAA ✓ Pass

Any Text WCAG AAA ✓ Pass

If you want to check with other color combinations, try the [Color Contrast Checker](#).



## Hex FC7991 Background



This preview shows how black text looks on a background with the Hex color FC7991.



This preview shows how white text looks on a background with the Hex color FC7991.

# Color Blindness Simulation

Color vision deficiency is a very complex topic, and I could not describe the different causes any better than Wikipedia does, so if you want to learn more, you should check out their [article about color blindness](#).

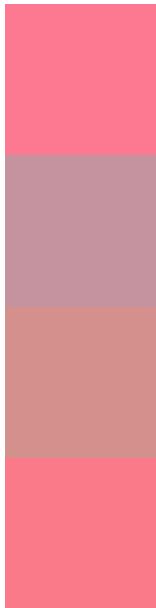
## Dichromacy





**Tritanopia**  
FB7B84

# Trichromacy



**Original Color**  
FC7991

**Protanomaly**  
C5939F

**Deuteranomaly**  
D3908D

**Tritanomaly**  
FB7A89

# Monochromacy



**Original Color**  
FC7991

**Achromatopsia**  
A3A3A3

**Achromatomaly**  
C3949C

# CSS Examples

## Text

The CSS property to change the color of the text to Hex FC7991 is called "color". The color property can be set on classes, ids or directly on the HTML element.

This example shows how text in the color #FC7991 looks like.

```
.text, #text, p{  
    color:#FC7991  
}
```

If you want to add a text shadow in that color use the text-shadow property, you can generate a text shadow directly with our [CSS Text Shadow Generator](#).

Here you see how black text with a 4 pixel #FC7991 colored shadow looks like.

```
.shadow{ text-shadow: 4px 4px 2px #FC7991
}
```

## Border

The CSS property to change the border of an element to Hex FC7991 is called "border". The border property can be set on classes, ids or directly on the HTML element.

This example shows the color as border, it can be applied via the CSS property "border" or "border-color".

```
.border, #border, table{ border:4px solid
#FC7991 }
```

If only the border color should be changed use the property `border-color`.

```
.border{ border-color:#FC7991 }
```

If you want to add a box shadow in that color use:

Here you see how a box with a 4 pixel #FC7991 colored shadow looks like.

```
.boxshadow{ -moz-box-shadow:4px 4px 4px  
4px #FC7991; -webkit-box-shadow:4px 4px  
4px 4px #FC7991; box-shadow:4px 4px 4px  
4px #FC7991 }
```

# Background

The CSS property to change the background color of an element to Hex FC7991 is called "background". The background property can be set on classes, ids or directly on the HTML element.

```
.background, #background, body{  
background:#FC7991 }
```

If only the background color should be changed can be used:

```
.background{ background-color:#FC7991 }
```

This example shows the color as background, it is applied via the CSS property "background".

To optimize and compress your CSS code, you can use our [online CSS compressor and optimizer](#) based on csstidy. If you want to create a linear or radial gradient as background or border, check our [CSS Gradient Generator](#).



Hey! You found this booklet interesting? Support Converting Colors with the new Membership Option!

The pro membership hides all ads, plus gives you double the colors in the color bucket, and more awesome pro features!

**[Learn more, Memberships starting at \\$2.50/m!](#)**

**Follow me  
on Twitter!**

@ConvertingColor