

Converting Colors

Hex(FC9193)

Have a look what the booklet for
Hex(FC9193) contains.

Hex(FC9193)	3
<i>Conversions</i>	4
<i>Details</i>	6
<i>Harmonies</i>	11
<i>Previews</i>	23
<i>Color Blindness Simulation</i>	26
<i>CSS Examples</i>	29

Color

Hex(FC9193)

Conversions

Conversions Part 1

Format	Color
Hex	FC9193
RGB	252, 145, 147
RGB Percent	99%, 57%, 58%
CMY	0.0118, 0.4314, 0.4235
CMYK	0.00, 0.42, 0.42, 0.01
HSL	359°, 95%, 78%
HSV	359°, 42%, 99%
XYZ	55.5367, 43.0528, 32.9867
YIQ	177.2210, 63.1300, 23.3060

Conversions

Conversions Part 2

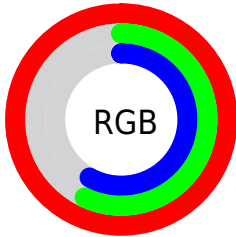
Format	Color
R _Y B	252, 145, 147
Decimal	16552339
CIE Lab	71.59, 40.46, 16.69
CIE LCh	72, 43.769, 22.421
Yxy	43.0528, 0.4221, 0.3272
Android (android.graphics.Color)	4294742419 (0xFFFC9193)
YUV	177.2210, -14.8990, 65.5812
Hunter-Lab	65.6147, 36.2581, 16.1232

Details

The Hex color **FC9193** is a light color, and the websafe version is hex **FF9999**. A complement of this color would be **91FCFA**, and the grayscale version is **B1B1B1**.

A 20% lighter version of the original color is **FFC8C9**, and **C05C61** is the 20% darker color. If you saturate the color by 10%, you get **FC787A**, and if you desaturate by 10%, it is **FCAAAC**.

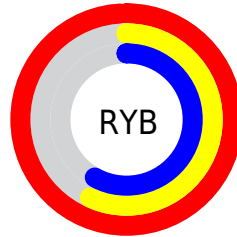
Distribution



Red (99%)

Green (57%)

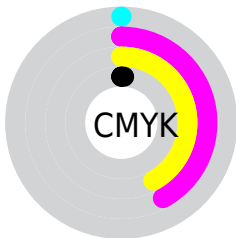
Blue (58%)



Red (99%)

Yellow (57%)

Blue (58%)

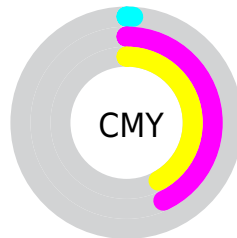


Cyan (0%)

Magenta (42%)

Yellow (42%)

Black (1%)



Cyan (1%)

Magenta (43%)

Yellow (42%)

Brightness & Saturation Gradients

These gradients show how the Hex color FC9193 changes by changing the brightness by 10 percent. The first figure shows a shift by +10% for each color and the second figure -10%.

Similar to the brightness gradients but the following saturation gradients show a change of the Hex color FC9193 by changing the saturation by 10% instead.

 FC9193

 FC9193

FFFFFF

 DE7679

 FFC8C9

 C05C61

 FFE5E5

 A34349

 862932

 6A0B1D

 4F0005

 350001

 0B0000

 000000

 FC9193

 FC9193

 FC787A

 FCAAAC

 FC5F62

 FCC3C4

 FC4549

 FCDDDD

 FC2C30

 FCF6F6

 FC1317

 FCFFFF

 FC0005

Harmonies

Analogous

The Analogous color harmony consists of three colors that are next to each other on the color wheel.



F590BB



FC9193



EE9B71

Triad

The Triadic color harmony groups three colors that are evenly spaced from another and form a triangle on the color wheel.



FC9193



7CBF7D



5BB6FE

Complementary

The Complementary color scheme is a pair of colors which are on the opposite of each other on the color wheel.



FC9193



91FCFA

Split Complementary

Split-complementary colors differ from the complementary color scheme. The scheme consists of three colors, the original color and two neighbors of the complement color.



00C0EE



FC9193



3FC4A4

Square

The Square scheme is like the rectangle color scheme, but the four colors are evenly spaced on the color wheel.



FC9193



AAB664



00C4CC



A4A9F9

Rectangle

The Rectangle color scheme consists of four colors that form a rectangle on the color wheel.



FC9193



DDA563



00C4CC



3BBAFB

Sweetspot

The Sweet Spot groups the original color and five complimentary colors.



FC9193



FFDEDE



F891FC



806B6B



000000



808080

Same Dimension

The Same Dimension uses a secret algorithm to generate beautiful new colors.



FC9193



FF7D7F



FCC391



7D7071



BD0004



3D0001

Inverse Universe

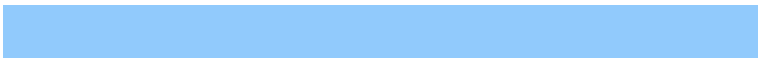
The Inverse Universe completely reimagines the original color for something new.



FC9193



FF7D7F



91CAFC



7D7071



BD0004



3D0001

Previews

White Background



This preview shows how the Hex color FC9193 looks on a white background.

Color Contrast Check

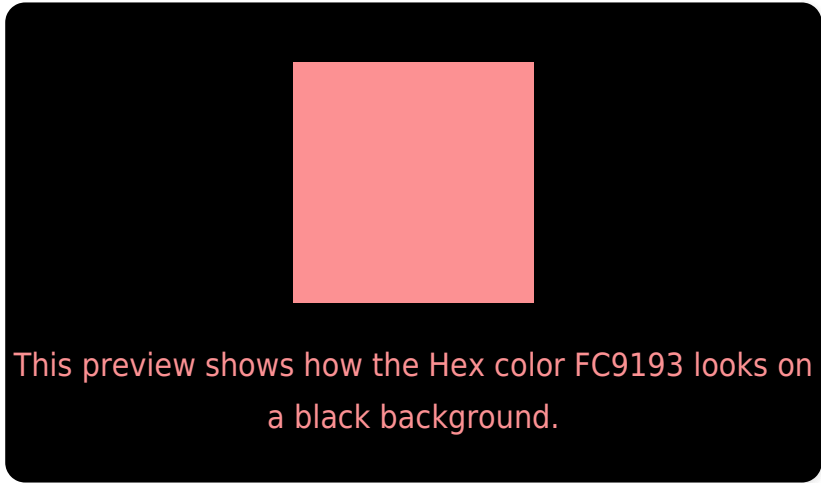
Large Text (above 18pt) WCAG AA × Fail

Any Text WCAG AA × Fail

Large Text (above 18pt) WCAG AAA × Fail

Any Text WCAG AAA × Fail

Black Background



Color Contrast Check

Large Text (above 18pt) WCAG AA ✓ Pass

Any Text WCAG AA ✓ Pass

Large Text (above 18pt) WCAG AAA ✓ Pass

Any Text WCAG AAA ✓ Pass

If you want to check with other color combinations, try the [Color Contrast Checker](#).

Hex FC9193 Background



This preview shows how black text looks on a background with the Hex color FC9193.



This preview shows how white text looks on a background with the Hex color FC9193.

Color Blindness Simulation

Color vision deficiency is a very complex topic, and I could not describe the different causes any better than Wikipedia does, so if you want to learn more, you should check out their [article about color blindness](#).

Dichromacy



Original Color
FC9193

Protanopia
B6AFA2

Deuteranopia
CCA98F



Tritanopia
FD909A

Trichromacy



Original Color
FC9193



Protanomaly
CFA49D



Deuteranomaly
DDA090



Tritanomaly
FD9097

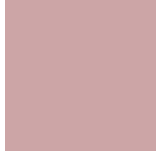
Monochromacy



Original Color
FC9193



Achromatopsia
B1B1B1



Achromatomaly
CCA5A6

CSS Examples

Text

The CSS property to change the color of the text to Hex FC9193 is called "color". The color property can be set on classes, ids or directly on the HTML element.

This example shows how text in the color #FC9193 looks like.

```
.text, #text, p{  
    color:#FC9193  
}
```

If you want to add a text shadow in that color use the text-shadow property, you can generate a text shadow directly with our [CSS Text Shadow Generator](#).

Here you see how black text with a 4 pixel #FC9193 colored shadow looks like.

```
.shadow{ text-shadow: 4px 4px 2px #FC9193
}
```

Border

The CSS property to change the border of an element to Hex FC9193 is called "border". The border property can be set on classes, ids or directly on the HTML element.

This example shows the color as border, it can be applied via the CSS property "border" or "border-color".

```
.border, #border, table{ border:4px solid
#FC9193 }
```

If only the border color should be changed use the property `border-color`.

```
.border{ border-color:#FC9193 }
```

If you want to add a box shadow in that color use:

Here you see how a box with a 4 pixel #FC9193 colored shadow looks like.

```
.boxshadow{ -moz-box-shadow:4px 4px 4px  
4px #FC9193; -webkit-box-shadow:4px 4px  
4px 4px #FC9193; box-shadow:4px 4px 4px  
4px #FC9193 }
```

Background

The CSS property to change the background color of an element to Hex FC9193 is called "background". The background property can be set on classes, ids or directly on the HTML element.

```
.background, #background, body{  
background:#FC9193 }
```

If only the background color should be changed can be used:

```
.background{ background-color:#FC9193 }
```

This example shows the color as background, it is applied via the CSS property "background".

To optimize and compress your CSS code, you can use our [online CSS compressor and optimizer](#) based on csstidy. If you want to create a linear or radial gradient as background or border, check our [CSS Gradient Generator](#).

Hey! You found this booklet interesting? Support Converting Colors with the new Membership Option!

The pro membership hides all ads, plus gives you double the colors in the color bucket, and more awesome pro features!

[Learn more, Memberships starting at \\$2.50/m!](#)

**Follow me
on Twitter!**

@ConvertingColor