

Converting Colors

Hex(FCB9AB)

Have a look what the booklet for
Hex(FCB9AB) contains.

Hex(FCB9AB)	3
<i>Conversions</i>	4
<i>Details</i>	6
<i>Harmonies</i>	11
<i>Previews</i>	23
<i>Color Blindness Simulation</i>	26
<i>CSS Examples</i>	29

Color

Hex(FCB9AB)

Conversions

Conversions Part 1

Format	Color
Hex	FCB9AB
RGB	252, 185, 171
RGB Percent	99%, 73%, 67%
CMY	0.0118, 0.2745, 0.3294
CMYK	0.00, 0.27, 0.32, 0.01
HSL	10°, 93%, 83%
HSV	10°, 32%, 99%
XYZ	64.8445, 58.3336, 46.3699
YIQ	203.4370, 44.4260, 9.8500

Conversions

Conversions Part 2

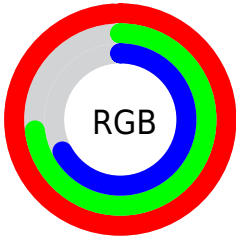
Format	Color
R _Y B	252, 188, 171
Decimal	16562603
CIE Lab	80.92, 22.39, 16.64
CIE LCh	81, 27.894, 36.618
Yxy	58.3336, 0.3825, 0.3441
Android (android.graphics.Color)	4294752683 (0xFFFCB9AB)
YUV	203.4370, -15.9914, 42.5898
Hunter-Lab	76.3765, 17.8898, 17.4672

Details

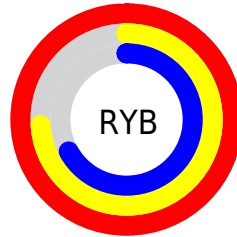
The Hex color **FCB9AB** is a light color, and the websafe version is hex **FFCCCC**. A complement of this color would be **ABEEFC**, and the grayscale version is **CCCCCC**.

A 20% lighter version of the original color is **FFF1E2**, and **C28477** is the 20% darker color. If you saturate the color by 10%, you get **FCA492**, and if you desaturate by 10%, it is **FCCEC4**.

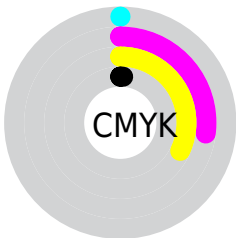
Distribution



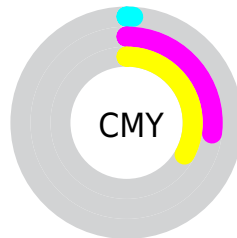
- Red (99%)
- Green (73%)
- Blue (67%)



- Red (99%)
- Yellow (74%)
- Blue (67%)



- Cyan (0%)
- Magenta (27%)
- Yellow (32%)
- Black (1%)



- Cyan (1%)
- Magenta (27%)
- Yellow (33%)

Brightness & Saturation Gradients

These gradients show how the Hex color FCB9AB changes by changing the brightness by 10 percent. The first figure shows a shift by +10% for each color and the second figure -10%.

Similar to the brightness gradients but the following saturation gradients show a change of the Hex color FCB9AB by changing the saturation by 10% instead.

 FCB9AB

FFFFFF

 FFF1E2

 FCB9AB

 DF9E90

 C28477

 A66A5E

 8A5146

 6F3A30

 55231B

 3C0D01

 260000

 000000

 FCB9AB

 FCB9AB

 FCA492

 FCCEC4

 FC8F79

 FCE3DD

 FC7A5F

 FCF8F7

 FC6646

 FCFFFF

 FC512D

 FC3C14

 FC2C00

Harmonies

Analogous

The Analogous color harmony consists of three colors that are next to each other on the color wheel.



FDB6C4



FCB9AB



EEC09A

Triad

The Triadic color harmony groups three colors that are evenly spaced from another and form a triangle on the color wheel.



FCB9AB



9CD6B3



B1C9FC

Complementary

The Complementary color scheme is a pair of colors which are on the opposite of each other on the color wheel.



FCB9AB



ABEEFC

Split Complementary

Split-complementary colors differ from the complementary color scheme. The scheme consists of three colors, the original color and two neighbors of the complement color.



8FD1F8



FCB9AB



84D8CE

Square

The Square scheme is like the rectangle color scheme, but the four colors are evenly spaced on the color wheel.



FCB9AB



BAD19F



7DD6E7



D4C0F3

Rectangle

The Rectangle color scheme consists of four colors that form a rectangle on the color wheel.



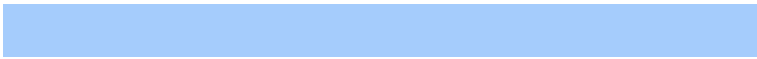
FCB9AB



DFC695



7DD6E7



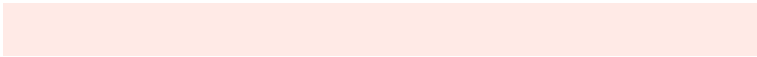
A5CCFC

Sweetspot

The Sweet Spot groups the original color and five complimentary colors.



FCB9AB



FFEAE6



FCABEE



807370



000000



808080

Same Dimension

The Same Dimension uses a secret algorithm to generate beautiful new colors.



FCB9AB



FFAD9C



FCE1AB



7D7370



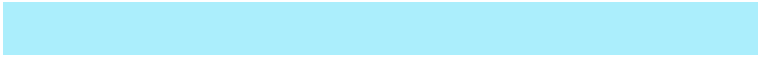
BD2100



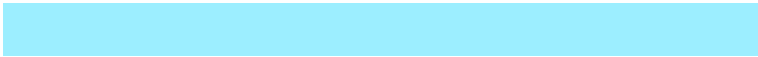
3D0B00

Inverse Universe

The Inverse Universe completely reimagines the original color for something new.



ABEEFC



9CEEFF



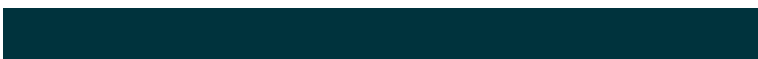
ABC6FC



707B7D



009CBD



00333D

Previews

White Background



This preview shows how the Hex color FCB9AB looks on a white background.

Color Contrast Check

Large Text (above 18pt) WCAG AA × Fail

Any Text WCAG AA × Fail

Large Text (above 18pt) WCAG AAA × Fail

Any Text WCAG AAA × Fail

Black Background



This preview shows how the Hex color FCB9AB looks on a black background.

Color Contrast Check

Large Text (above 18pt) WCAG AA ✓ Pass

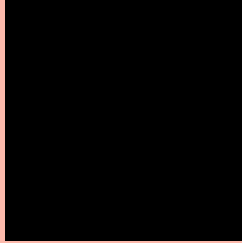
Any Text WCAG AA ✓ Pass

Large Text (above 18pt) WCAG AAA ✓ Pass

Any Text WCAG AAA ✓ Pass

If you want to check with other color combinations, try the [Color Contrast Checker](#).

Hex FCB9AB Background



This preview shows how black text looks on a background with the Hex color FCB9AB.

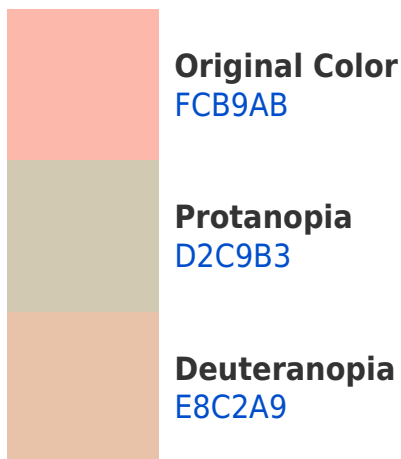


This preview shows how white text looks on a background with the Hex color FCB9AB.

Color Blindness Simulation

Color vision deficiency is a very complex topic, and I could not describe the different causes any better than Wikipedia does, so if you want to learn more, you should check out their [article about color blindness](#).

Dichromacy



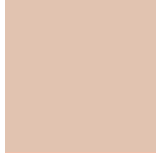


Tritanopia
FEB5C3

Trichromacy



Original Color
FCB9AB



Protanomaly
E1C3B0



Deuteranomaly
EFBFAA

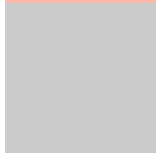


Tritanomaly
FDB6BA

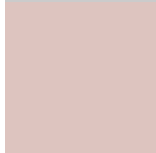
Monochromacy



Original Color
FCB9AB



Achromatopsia
CBCBCB



Achromatomaly
DDC4BF

CSS Examples

Text

The CSS property to change the color of the text to Hex FCB9AB is called "color". The color property can be set on classes, ids or directly on the HTML element.

This example shows how text in the color #FCB9AB looks like.

```
.text, #text, p{  
    color:#FCB9AB  
}
```

If you want to add a text shadow in that color use the text-shadow property, you can generate a text shadow directly with our [CSS Text Shadow Generator](#).

Here you see how black text with a 4 pixel #FCB9AB colored shadow looks like.

```
.shadow{ text-shadow: 4px 4px 2px #FCB9AB
}
```

Border

The CSS property to change the border of an element to Hex FCB9AB is called "border". The border property can be set on classes, ids or directly on the HTML element.

This example shows the color as border, it can be applied via the CSS property "border" or "border-color".

```
.border, #border, table{ border:4px solid
#FCB9AB }
```

If only the border color should be changed use the property `border-color`.

```
.border{ border-color:#FCB9AB }
```

If you want to add a box shadow in that color use:

Here you see how a box with a 4 pixel #FCB9AB colored shadow looks like.

```
.boxshadow{ -moz-box-shadow:4px 4px 4px  
4px #FCB9AB; -webkit-box-shadow:4px 4px  
4px 4px #FCB9AB; box-shadow:4px 4px 4px  
4px #FCB9AB }
```

Background

The CSS property to change the background color of an element to Hex FCB9AB is called "background". The background property can be set on classes, ids or directly on the HTML element.

```
.background, #background, body{  
background:#FCB9AB }
```

If only the background color should be changed can be used:

```
.background{ background-color:#FCB9AB }
```

This example shows the color as background, it is applied via the CSS property "background".

To optimize and compress your CSS code, you can use our [online CSS compressor and optimizer](#) based on csstidy. If you want to create a linear or radial gradient as background or border, check our [CSS Gradient Generator](#).

Hey! You found this booklet interesting? Support Converting Colors with the new Membership Option!

The pro membership hides all ads, plus gives you double the colors in the color bucket, and more awesome pro features!

[Learn more, Memberships starting at \\$2.50/m!](#)

**Follow me
on Twitter!**

@ConvertingColor