

# Converting Colors

Hex(FCBAAA)

Have a look what the booklet for  
Hex(FCBAAA) contains.

<b>Hex(FCBAAA)</b> .....	3
<i><b>Conversions</b></i> .....	4
<i><b>Details</b></i> .....	6
<i><b>Harmonies</b></i> .....	11
<i><b>Previews</b></i> .....	23
<i><b>Color Blindness Simulation</b></i> .....	26
<i><b>CSS Examples</b></i> .....	29

# **Color**

**Hex(FCBAAA)**

# Conversions

## Conversions Part 1

Format	Color
Hex	FCBAAA
RGB	252, 186, 170
RGB Percent	99%, 73%, 67%
CMY	0.0118, 0.2706, 0.3333
CMYK	0.00, 0.26, 0.33, 0.01
HSL	12°, 93%, 83%
HSV	12°, 33%, 99%
XYZ	64.9595, 58.7155, 45.9397
YIQ	203.9100, 44.4720, 9.0160

# Conversions

## Conversions Part 2

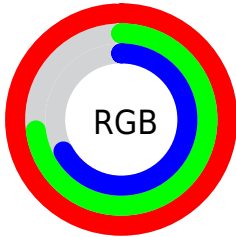
Format	Color
R <sub>Y</sub> B	252, 190, 170
Decimal	16562858
CIE Lab	81.13, 21.74, 17.47
CIE LCh	81, 27.888, 38.784
Yxy	58.7155, 0.3830, 0.3462
Android (android.graphics.Color)	4294752938 (0xFFFCBAAA)
YUV	203.9100, -16.7176, 42.1749
Hunter-Lab	76.6261, 17.2272, 18.0920

# Details

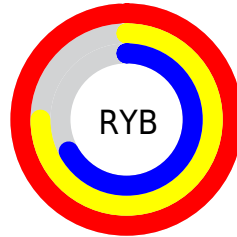
The Hex color **FCBAAA** is a light color, and the websafe version is hex **FFCCCC**. A complement of this color would be **AAECFC**, and the grayscale version is **CCCCCC**.

A 20% lighter version of the original color is **FFF2E1**, and **C28576** is the 20% darker color. If you saturate the color by 10%, you get **FCA691**, and if you desaturate by 10%, it is **FCCEC3**.

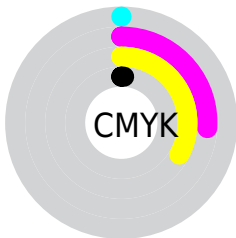
# Distribution



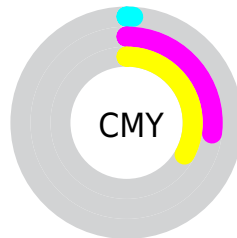
- Red (99%)
- Green (73%)
- Blue (67%)



- Red (99%)
- Yellow (75%)
- Blue (67%)



- Cyan (0%)
- Magenta (26%)
- Yellow (33%)
- Black (1%)



- Cyan (1%)
- Magenta (27%)
- Yellow (33%)

# Brightness & Saturation Gradients

These gradients show how the Hex color FCBAAA changes by changing the brightness by 10 percent. The first figure shows a shift by +10% for each color and the second figure -10%.

Similar to the brightness gradients but the following saturation gradients show a change of the Hex color FCBAAA by changing the saturation by 10% instead.



 FCBAAA

 FCBAAA

FFFFFF

 DF9F8F

 FFF2E1

 C28576

FFFFFFE

 A66B5D

 8A5245

 6F3B2F

 55241A

 3C0E00

 260000

 000000

 FCBAAA

 FCBAAA

 FCA691

 FCCEC3

 FC9178

 FCE3DC

 FC7D5E

 FCF7F6

 FC6945

 FCFFFF

 FC552C

 FC4013

 FC3100

# Harmonies

## Analogous

The Analogous color harmony consists of three colors that are next to each other on the color wheel.



FEB7C3



FCBAAA



EDC29A

# Triad

The Triadic color harmony groups three colors that are evenly spaced from another and form a triangle on the color wheel.



FCBAAA



9AD7B6



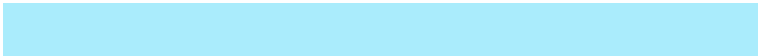
B4C9FD

# Complementary

The Complementary color scheme is a pair of colors which are on the opposite of each other on the color wheel.



FCBAAA



AAECFC

# Split Complementary

Split-complementary colors differ from the complementary color scheme. The scheme consists of three colors, the original color and two neighbors of the complement color.



92D1F9



FCBAAA



83D8D1

# Square

The Square scheme is like the rectangle color scheme, but the four colors are evenly spaced on the color wheel.



FCBAAA



B8D2A0



7ED7E9



D7C0F2

# Rectangle

The Rectangle color scheme consists of four colors that form a rectangle on the color wheel.



FCBAAA



DEC795



7ED7E9



A8CCFD

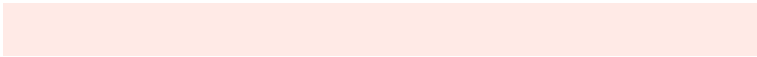


# Sweetspot

The Sweet Spot groups the original color and five complimentary colors.



FCBAAA



FFEAE6



FCAAED



807370



000000



808080



# Same Dimension

The Same Dimension uses a secret algorithm to generate beautiful new colors.



FCBAAA



FFAF9C



FCE2AA



7D7370



BD2500

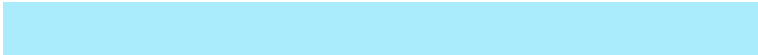


3D0C00

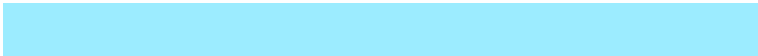


# Inverse Universe

The Inverse Universe completely reimagines the original color for something new.



AAECFC



9CECFF



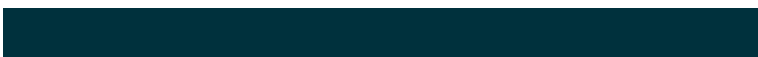
AAC4FC



707B7D



0098BD

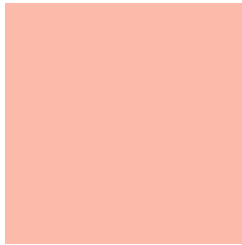


00313D



# Previews

## White Background



This preview shows how the Hex color FCBAAA looks on a white background.

## Color Contrast Check

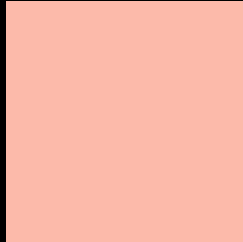
Large Text (above 18pt) WCAG AA × Fail

Any Text WCAG AA × Fail

Large Text (above 18pt) WCAG AAA × Fail

Any Text WCAG AAA × Fail

# Black Background



This preview shows how the Hex color FCBAAA looks on a black background.

## Color Contrast Check

Large Text (above 18pt) WCAG AA ✓ Pass

Any Text WCAG AA ✓ Pass

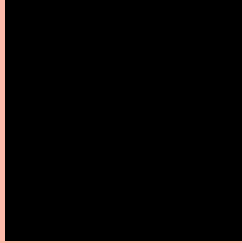
Large Text (above 18pt) WCAG AAA ✓ Pass

Any Text WCAG AAA ✓ Pass

If you want to check with other color combinations, try the [Color Contrast Checker](#).



## Hex FCBAAA Background



This preview shows how black text looks on a background with the Hex color FCBAAA.

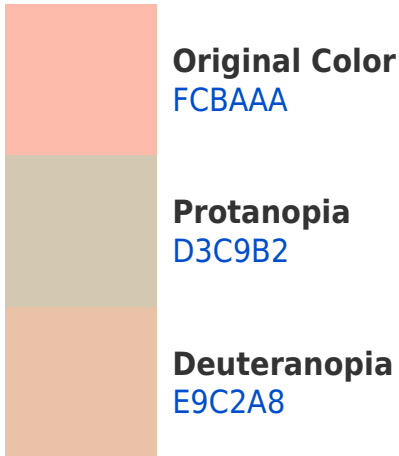


This preview shows how white text looks on a background with the Hex color FCBAAA.

# Color Blindness Simulation

Color vision deficiency is a very complex topic, and I could not describe the different causes any better than Wikipedia does, so if you want to learn more, you should check out their [article about color blindness](#).

## Dichromacy



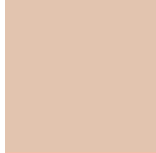


**Tritanopia**  
FFB6C4

# Trichromacy



**Original Color**  
FCBAAA



**Protanomaly**  
E2C4AF



**Deuteranomaly**  
F0BFA9

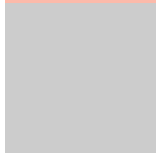


**Tritanomaly**  
FEB7BB

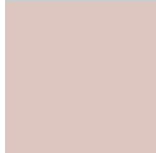
# Monochromacy



**Original Color**  
FCBAAA



**Achromatopsia**  
CCCCCC



**Achromatomaly**  
DDC5C0

# CSS Examples

## Text

The CSS property to change the color of the text to Hex FCBAAA is called "color". The color property can be set on classes, ids or directly on the HTML element.

This example shows how text in the color #FCBAAA looks like.

```
.text, #text, p{  
    color:#FCBAAA  
}
```

If you want to add a text shadow in that color use the text-shadow property, you can generate a text shadow directly with our [CSS Text Shadow Generator](#).

Here you see how black text with a 4 pixel #FCBAAA colored shadow looks like.

```
.shadow{ text-shadow: 4px 4px 2px #FCBAAA
}
```

## Border

The CSS property to change the border of an element to Hex FCBAAA is called "border". The border property can be set on classes, ids or directly on the HTML element.

This example shows the color as border, it can be applied via the CSS property "border" or "border-color".

```
.border, #border, table{ border:4px solid
#FCBAAA }
```

If only the border color should be changed use the property `border-color`.

```
.border{ border-color:#FCBAAA }
```

If you want to add a box shadow in that color use:

Here you see how a box with a 4 pixel #FCBAAA colored shadow looks like.

```
.boxshadow{ -moz-box-shadow:4px 4px 4px  
4px #FCBAAA; -webkit-box-shadow:4px 4px  
4px 4px #FCBAAA; box-shadow:4px 4px 4px  
4px #FCBAAA }
```

# Background

The CSS property to change the background color of an element to Hex FCBAAA is called "background". The background property can be set on classes, ids or directly on the HTML element.

```
.background, #background, body{  
background:#FCBAAA }
```

If only the background color should be changed can be used:

```
.background{ background-color:#FCBAAA }
```

This example shows the color as background, it is applied via the CSS property "background".

To optimize and compress your CSS code, you can use our [online CSS compressor and optimizer](#) based on csstidy. If you want to create a linear or radial gradient as background or border, check our [CSS Gradient Generator](#).



Hey! You found this booklet interesting? Support Converting Colors with the new Membership Option!

The pro membership hides all ads, plus gives you double the colors in the color bucket, and more awesome pro features!

**[Learn more, Memberships starting at \\$2.50/m!](#)**

**Follow me  
on Twitter!**

@ConvertingColor